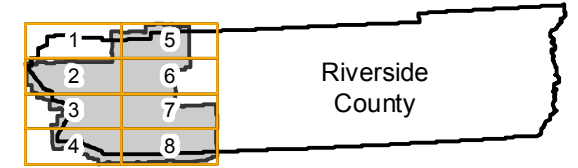


AXM-1961

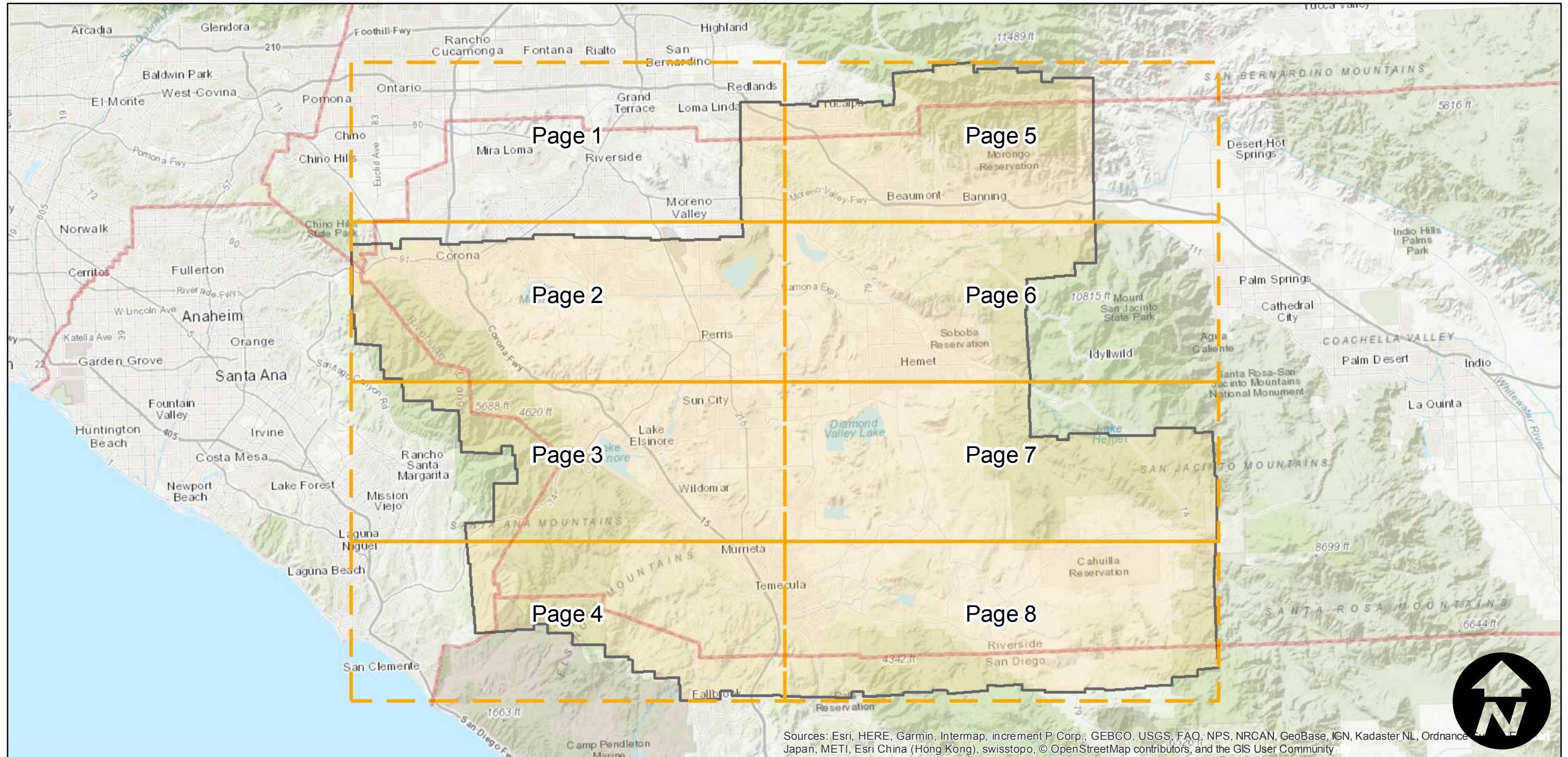
Counties: Riverside
Flight date(s): 06-04-1961 to 10-02-1961
Scale: 1:20,000
Overlap: 20-100%

Note: Coverage of Corona, Lake Elsinore, Murrieta, Temecula, Hemet, Perris, Beaumont, and more. Flight flown in stereo, but MIL holdings is mostly alternate frames giving pictorial coverage.

FLIGHT LOCATION



Complete Metadata:
<https://www.library.ucsb.edu/src/airphotos/aerial-photography-information>



0 5 10 20 Miles

Index to Aerial Photography
Page Key

Scale of this index: 1:500,000

AXM-1961

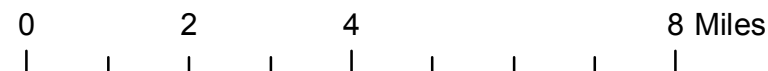
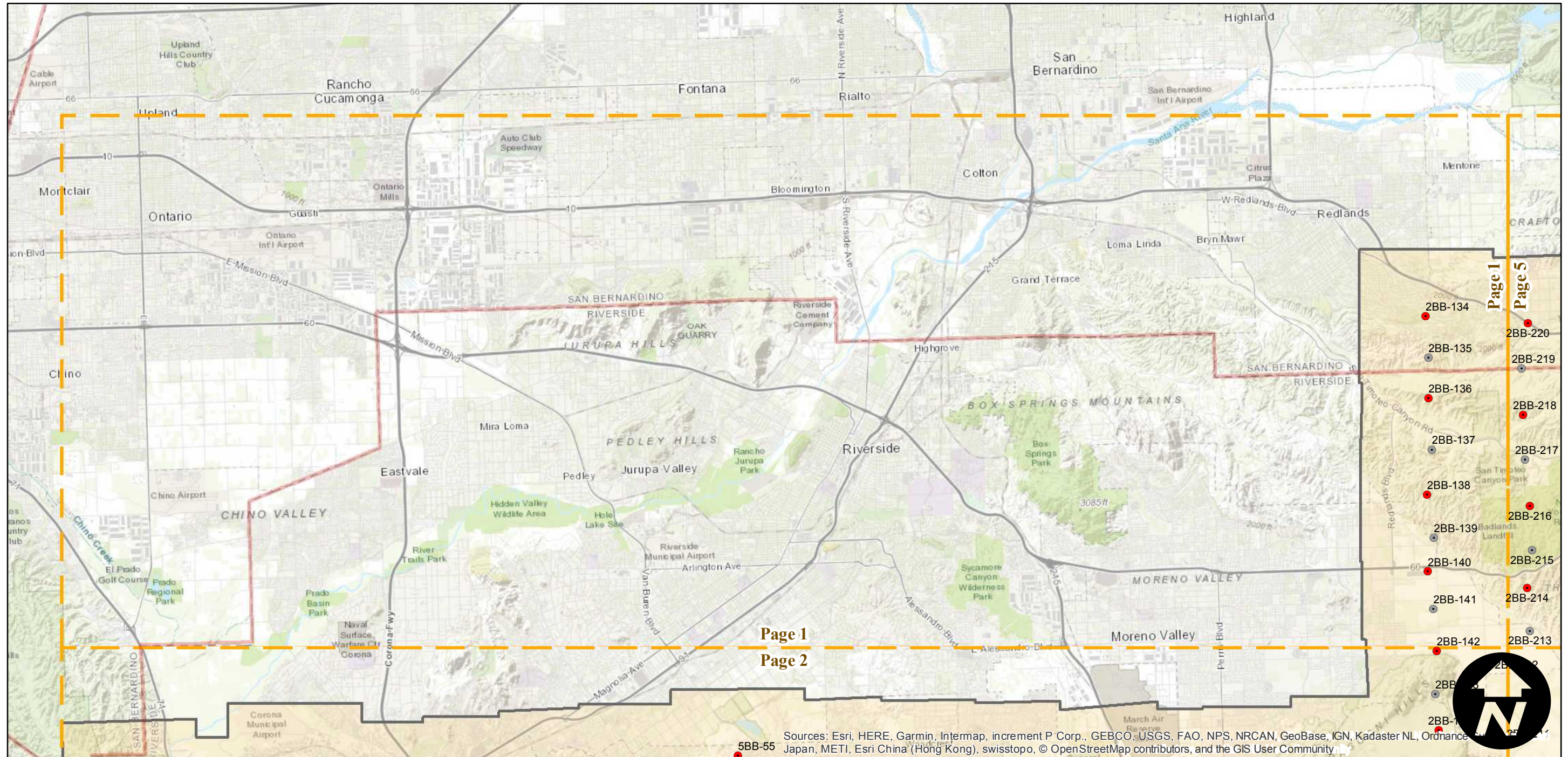
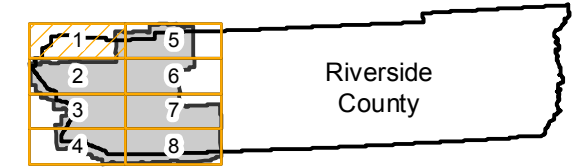
Counties: Riverside
 Flight date(s): 06-04-1961 to 10-02-1961
 Scale: 1:20,000
 Overlap: 20-100%

Complete Metadata:
<https://www.library.ucsb.edu/src/airphotos/aerial-photography-information>

Note: Coverage of Corona, Lake Elsinore, Murrieta, Temecula, Hemet, Perris, Beaumont, and more. Flight flown in stereo, but MIL holdings is mostly alternate frames giving pictorial coverage.

- MIL owns frame
- MIL does not own frame

FLIGHT LOCATION



Sources: Esri, HERE, Garmin, Intermap, increment P Corp., GEBCO, USGS, FAO, NPS, NRCAN, GeoBase, IGN, Kadaster NL, Ordnance Survey, Esri Japan, METI, Esri China (Hong Kong), swisstopo, © OpenStreetMap contributors, and the GIS User Community

AXM-1961

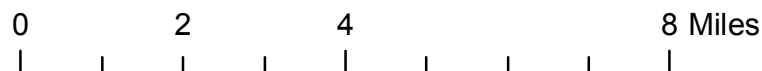
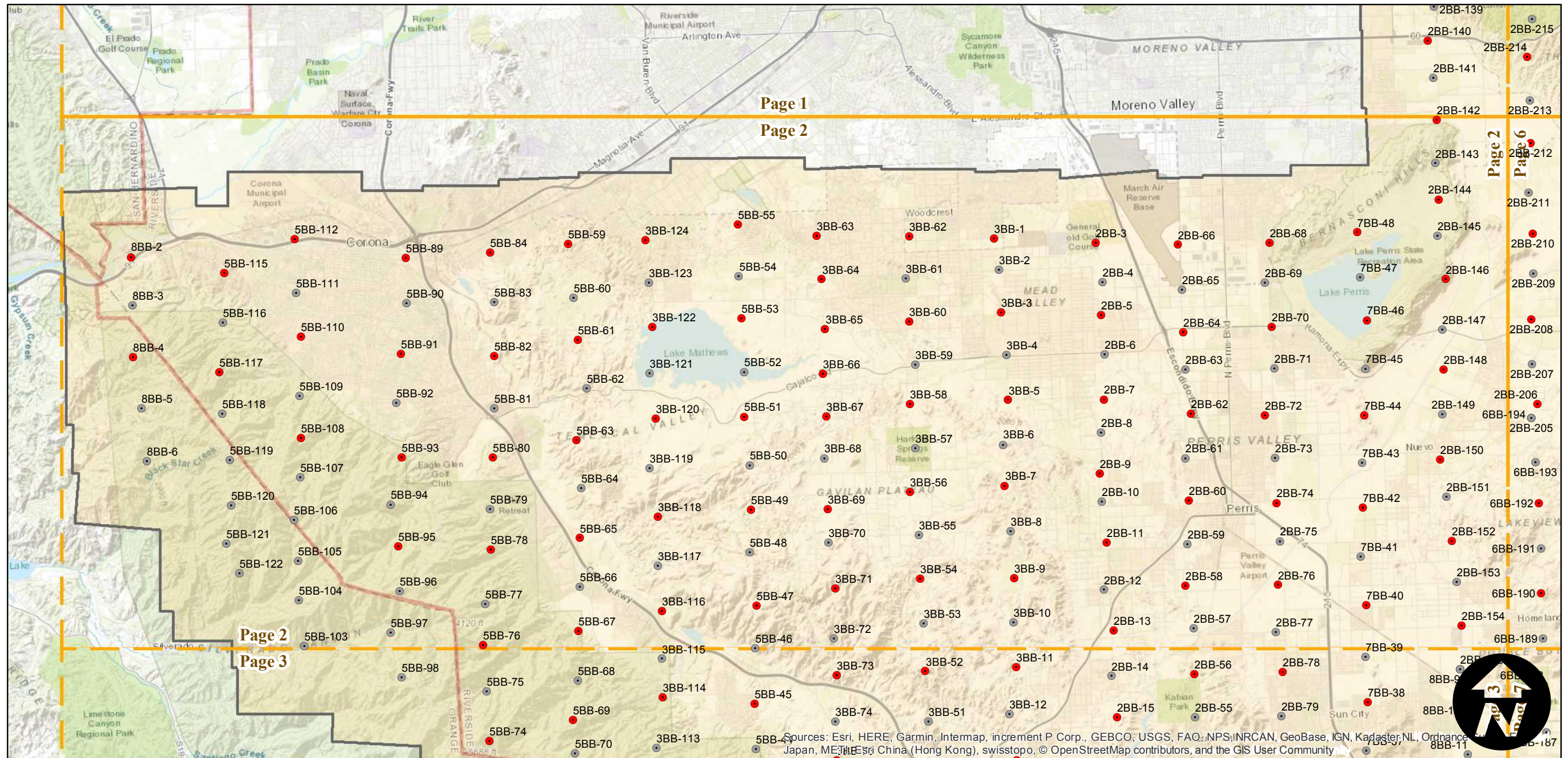
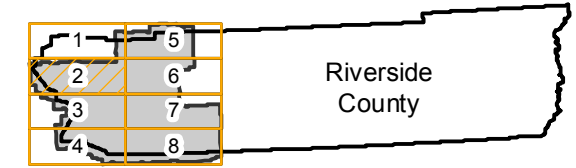
Counties: Riverside
 Flight date(s): 06-04-1961 to 10-02-1961
 Scale: 1:20,000
 Overlap: 20-100%

Complete Metadata:
<https://www.library.ucsb.edu/src/airphotos/aerial-photography-information>

Note: Coverage of Corona, Lake Elsinore, Murrieta, Temecula, Hemet, Perris, Beaumont, and more. Flight flown in stereo, but MIL holdings is mostly alternate frames giving pictorial coverage.

- MIL owns frame
- MIL does not own frame

FLIGHT LOCATION



Sources: Esri, HERE, Garmin, Intermap, increment P Corp., GEBCO, USGS, FAO, NPS, INRCAN, GeoBase, IGN, Kadaster NL, Ordnance Survey, Esri, China (Hong Kong), swisstopo, © OpenStreetMap contributors, and the GIS User Community

AXM-1961

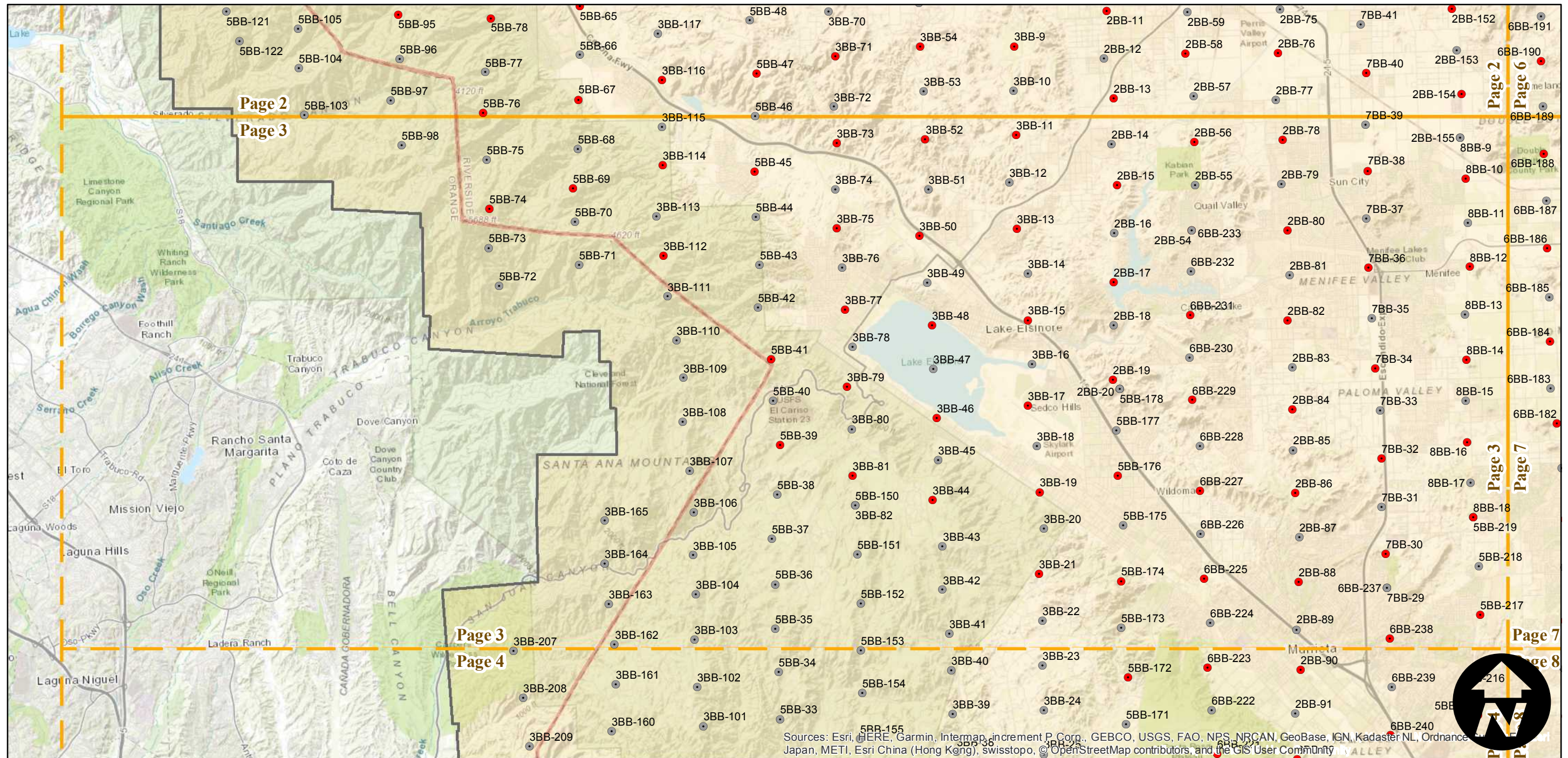
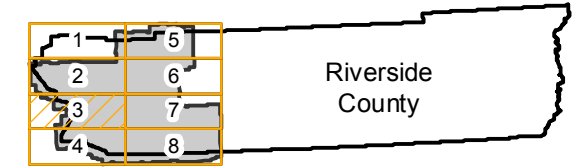
Counties: Riverside
Flight date(s): 06-04-1961 to 10-02-1961
Scale: 1:20,000
Overlap: 20-100%

Complete Metadata:
<https://www.library.ucsb.edu/src/airphotos/aerial-photography-information>

Note: Coverage of Corona, Lake Elsinore, Murrieta, Temecula, Hemet, Perris, Beaumont, and more. Flight flown in stereo, but MIL holdings is mostly alternate frames giving pictorial coverage.

- MIL owns frame
- MIL does not own frame

FLIGHT LOCATION



Sources: Esri, HERE, Garmin, Intermap, increment P. Corp., GEBCO, USGS, FAO, NPS, NRCAN, GeoBase, IGN, Kadaster NL, Ordnance Survey, Esri Japan, METI, Esri China (Hong Kong), swisstopo, © OpenStreetMap contributors, and the GIS User Community

0 2 4 8 Miles

Index to Aerial Photography
Page 3 of 8

Scale of this index: 1:150,000

AXM-1961

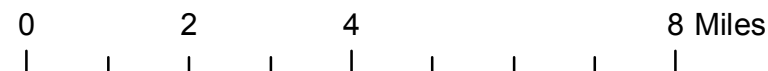
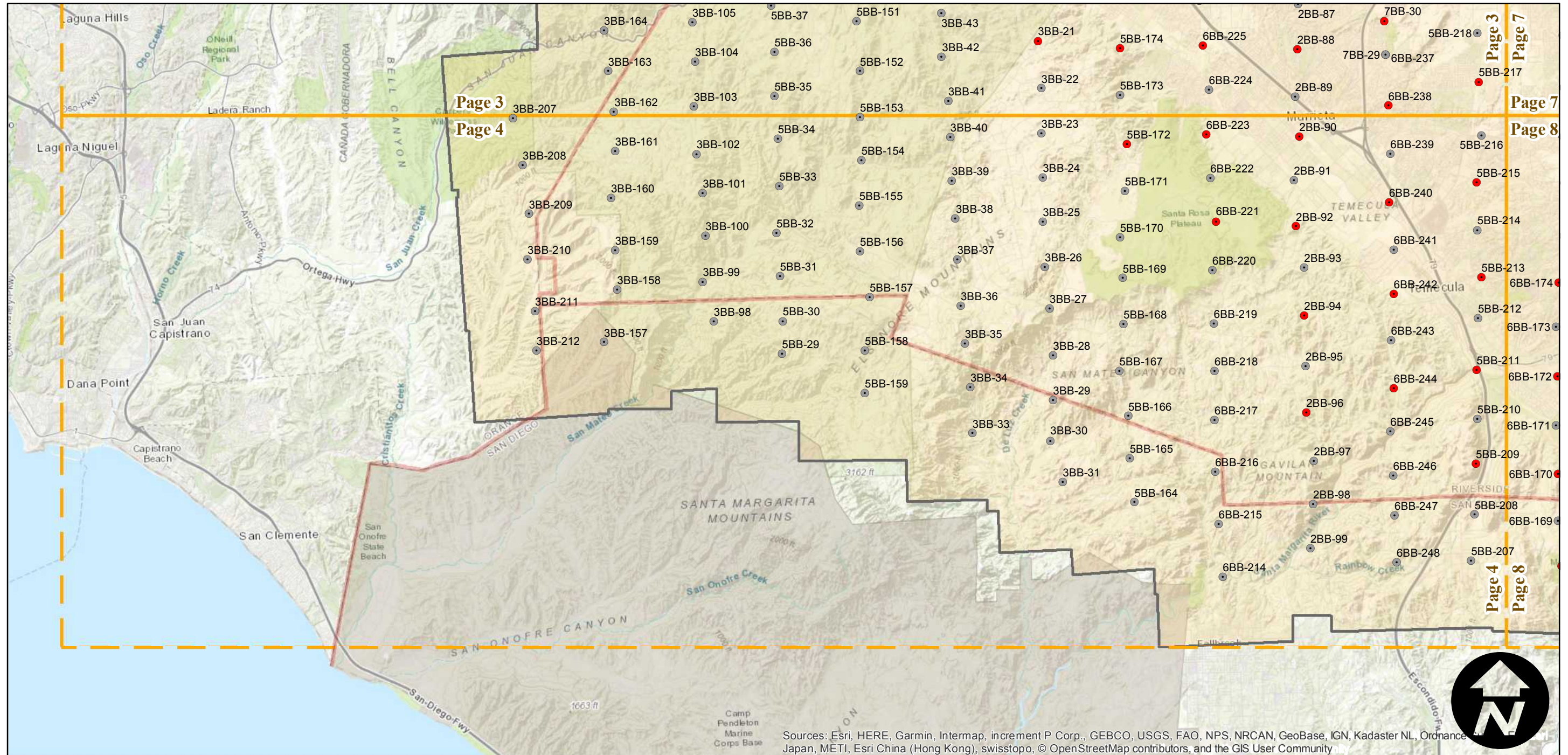
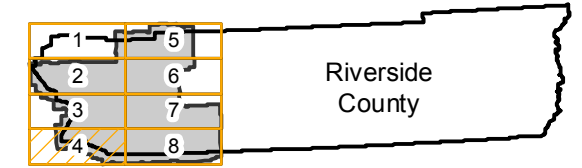
Counties: Riverside
Flight date(s): 06-04-1961 to 10-02-1961
Scale: 1:20,000
Overlap: 20-100%

Complete Metadata:
<https://www.library.ucsb.edu/src/airphotos/aerial-photography-information>

Note: Coverage of Corona, Lake Elsinore, Murrieta, Temecula, Hemet, Perris, Beaumont, and more. Flight flown in stereo, but MIL holdings is mostly alternate frames giving pictorial coverage.

- MIL owns frame
- MIL does not own frame

FLIGHT LOCATION



Sources: Esri, HERE, Garmin, Intermap, increment P Corp., GEBCO, USGS, FAO, NPS, NRCAN, GeoBase, IGN, Kadaster NL, Ordnance Survey, Esri Japan, METI, Esri China (Hong Kong), swisstopo, © OpenStreetMap contributors, and the GIS User Community

AXM-1961

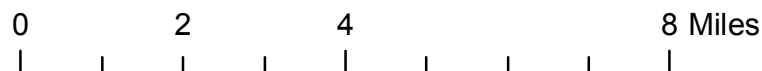
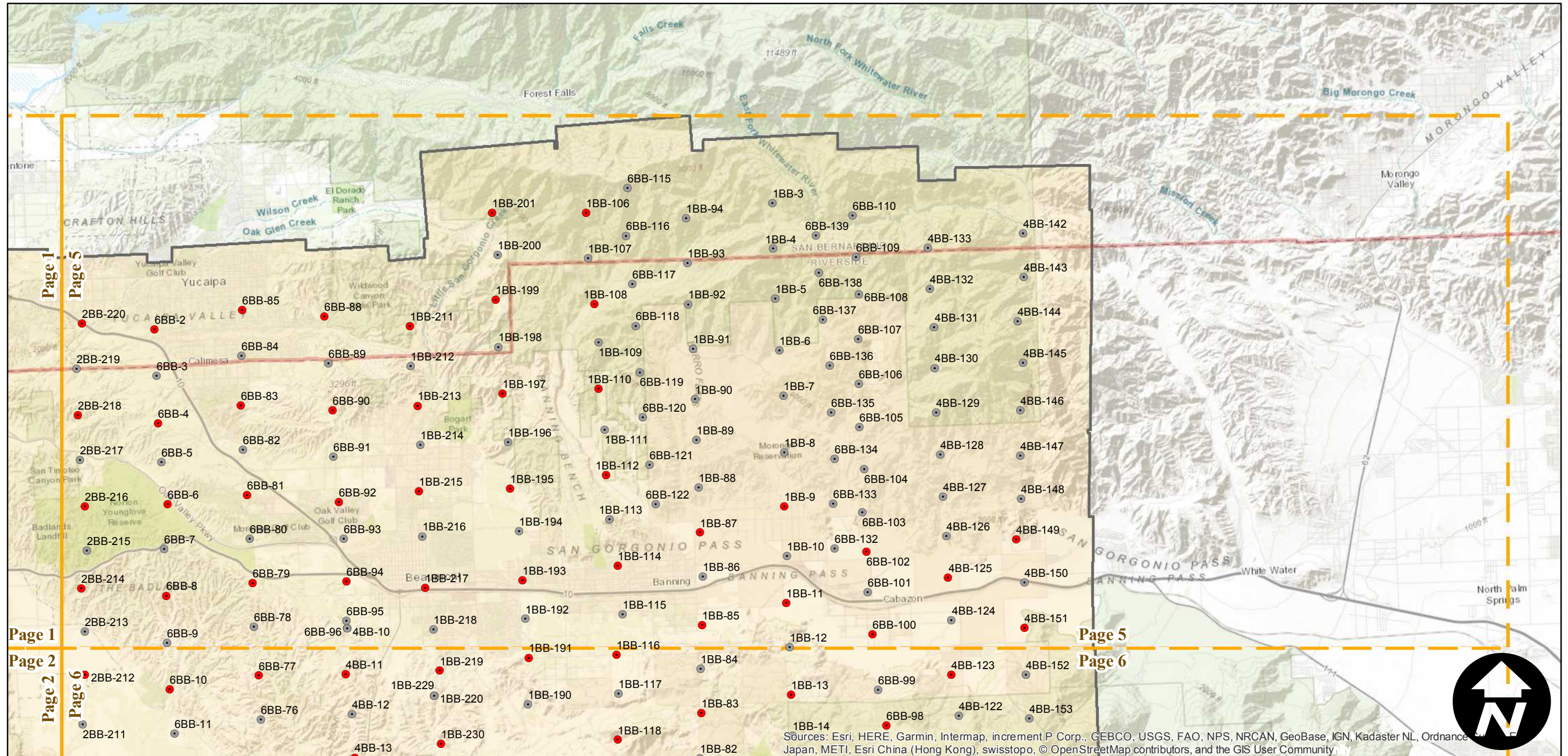
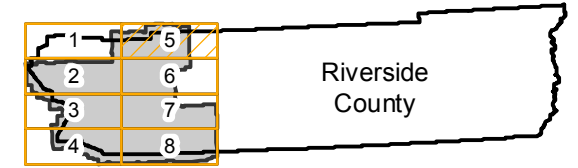
Counties: Riverside
 Flight date(s): 06-04-1961 to 10-02-1961
 Scale: 1:20,000
 Overlap: 20-100%

Complete Metadata:
<https://www.library.ucsb.edu/src/airphotos/aerial-photography-information>

Note: Coverage of Corona, Lake Elsinore, Murrieta, Temecula, Hemet, Perris, Beaumont, and more. Flight flown in stereo, but MIL holdings is mostly alternate frames giving pictorial coverage.

- MIL owns frame
- MIL does not own frame

FLIGHT LOCATION



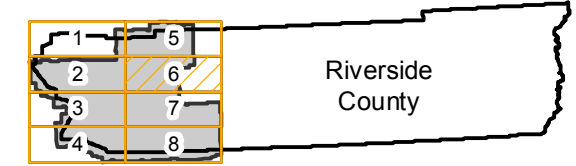
Sources: Esri, HERE, Garmin, Intermap, increment P Corp., GEBCO, USGS, FAO, NPS, NRCAN, GeoBase, IGN, Kadaster NL, Ordnance Survey, Esri Japan, METI, Esri China (Hong Kong), swisstopo, © OpenStreetMap contributors, and the GIS User Community

AXM-1961

FLIGHT LOCATION

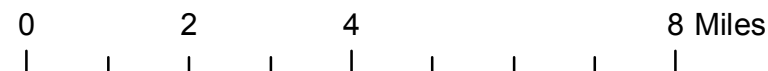
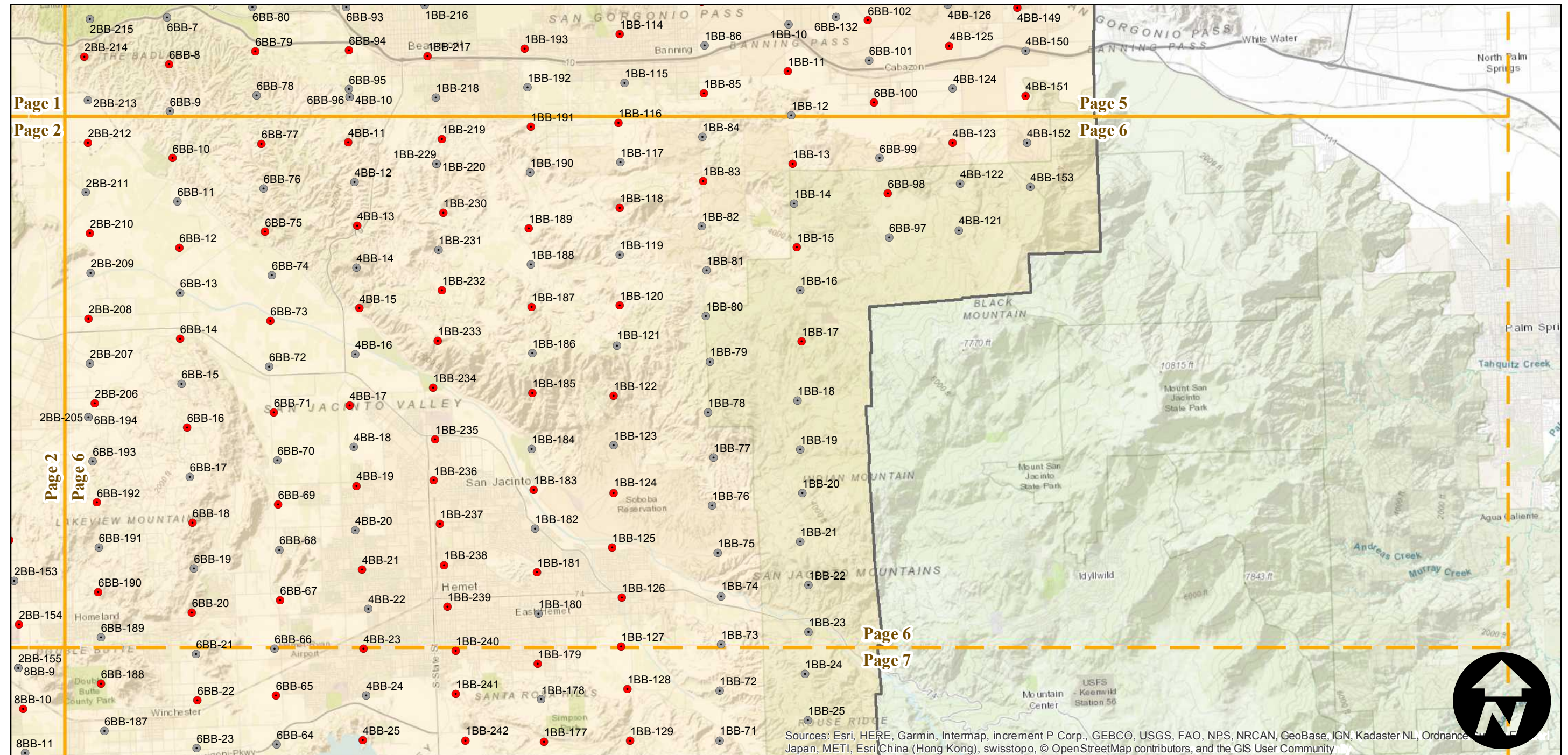
Counties: Riverside
 Flight date(s): 06-04-1961 to 10-02-1961
 Scale: 1:20,000
 Overlap: 20-100%

Note: Coverage of Corona, Lake Elsinore, Murrieta, Temecula, Hemet, Perris, Beaumont, and more. Flight flown in stereo, but MIL holdings is mostly alternate frames giving pictorial coverage.



Complete Metadata:
<https://www.library.ucsb.edu/src/airphotos/aerial-photography-information>

- MIL owns frame
- MIL does not own frame



Sources: Esri, HERE, Garmin, Intermap, increment P Corp., GEBCO, USGS, FAO, NPS, NRCAN, GeoBase, IGN, Kadaster NL, Ordnance Survey, Esri Japan, METI, Esri China (Hong Kong), swisstopo, © OpenStreetMap contributors, and the GIS User Community

AXM-1961

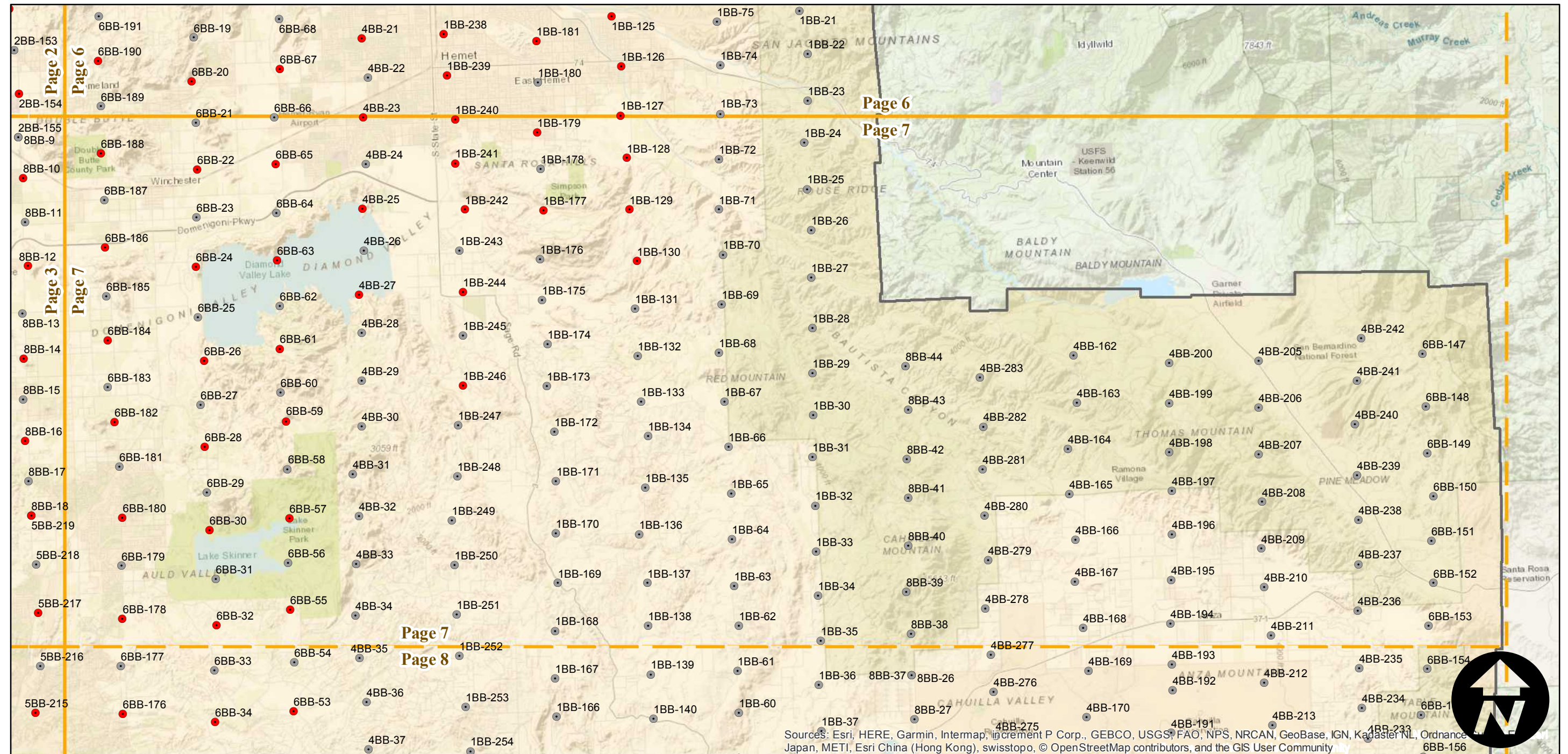
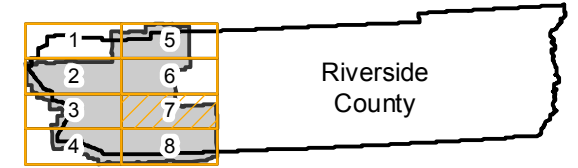
Counties: Riverside
 Flight date(s): 06-04-1961 to 10-02-1961
 Scale: 1:20,000
 Overlap: 20-100%

Complete Metadata:
<https://www.library.ucsb.edu/src/airphotos/aerial-photography-information>

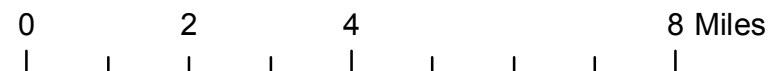
Note: Coverage of Corona, Lake Elsinore, Murrieta, Temecula, Hemet, Perris, Beaumont, and more. Flight flown in stereo, but MIL holdings is mostly alternate frames giving pictorial coverage.

- MIL owns frame
- MIL does not own frame

FLIGHT LOCATION



Sources: Esri, HERE, Garmin, Intermap, increment P Corp., GEBCO, USGS, FAO, NPS, NRCAN, GeoBase, IGN, Kadaster NL, Ordnance Survey, Esri China (Hong Kong), swisstopo, © OpenStreetMap contributors, and the GIS User Community



AXM-1961

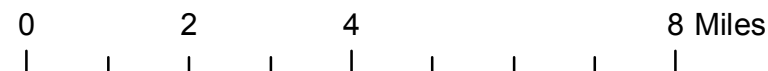
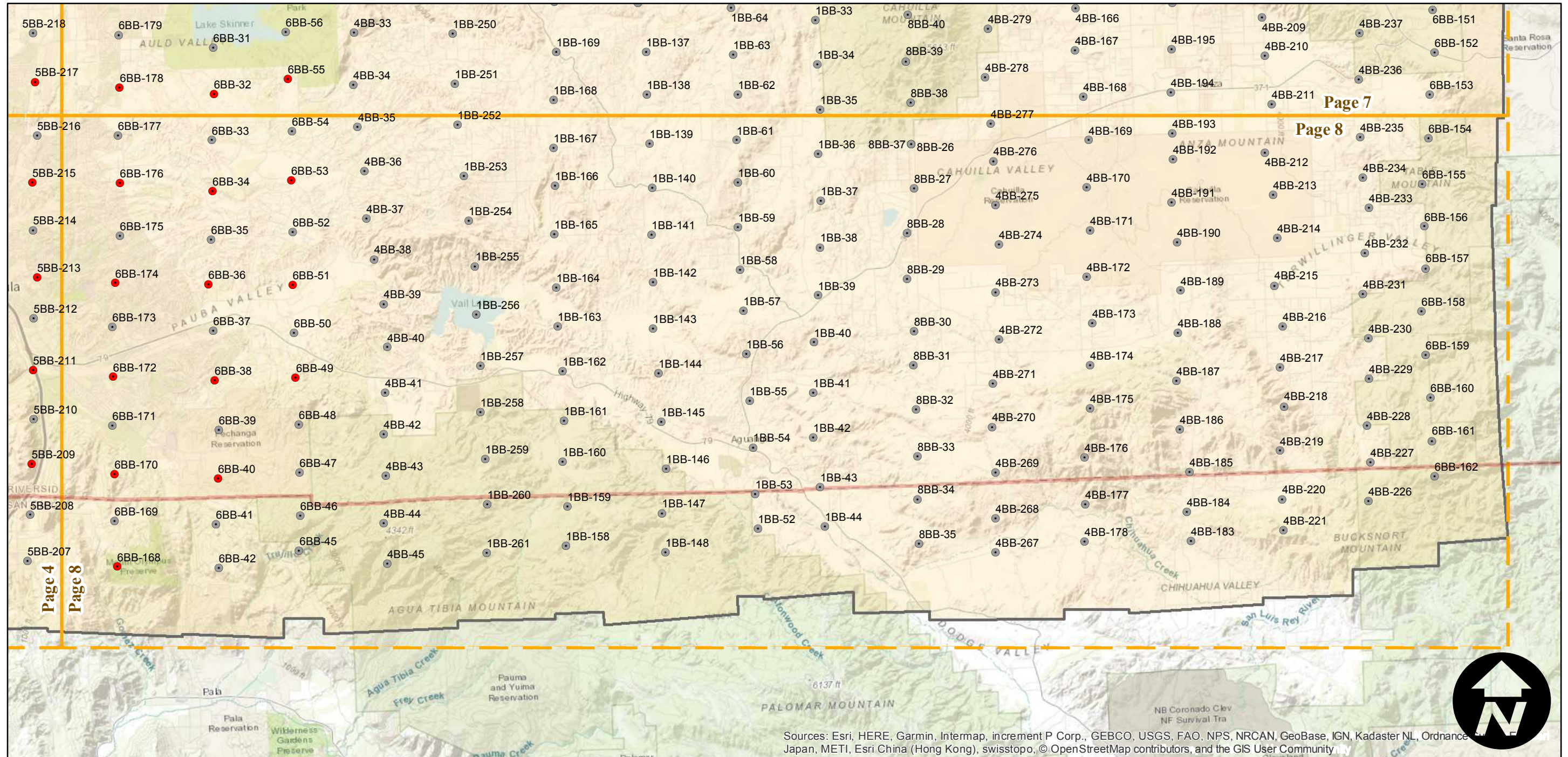
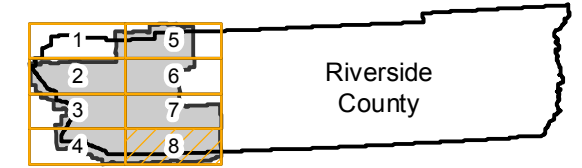
Counties: Riverside
 Flight date(s): 06-04-1961 to 10-02-1961
 Scale: 1:20,000
 Overlap: 20-100%

Complete Metadata:
<https://www.library.ucsb.edu/src/airphotos/aerial-photography-information>

Note: Coverage of Corona, Lake Elsinore, Murrieta, Temecula, Hemet, Perris, Beaumont, and more. Flight flown in stereo, but MIL holdings is mostly alternate frames giving pictorial coverage.

- MIL owns frame
- MIL does not own frame

FLIGHT LOCATION



Sources: Esri, HERE, Garmin, Intermap, increment P Corp., GEBCO, USGS, FAO, NPS, NRCAN, GeoBase, IGN, Kadaster NL, Ordnance Survey, Esri Japan, METI, Esri China (Hong Kong), swisstopo, © OpenStreetMap contributors, and the GIS User Community

