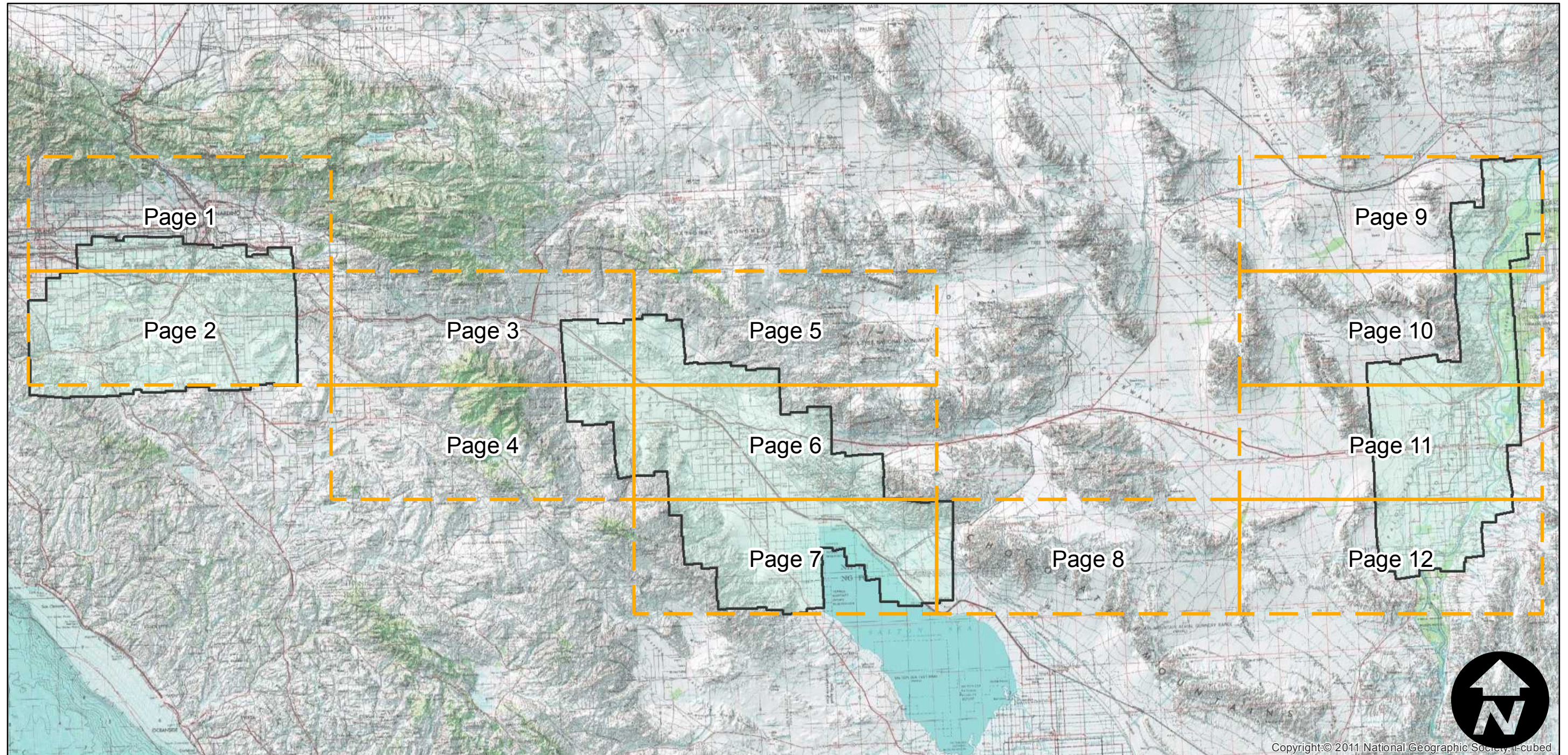
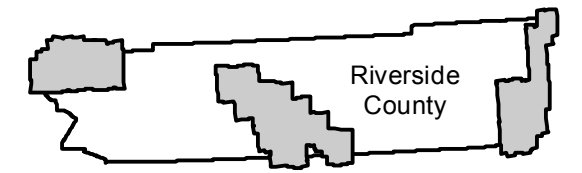


AXM-1959

Counties: Riverside
Flight date(s): 01/01/1959 to 12/31/1959
Scale: 1:20,000
Overlap: 60%

Complete Metadata:
<http://www.library.ucsb.edu/mil/aerial-photography-tools>

FLIGHT LOCATION



0 12.5 25 50 Miles

Index to Aerial Photography
Map Key

Scale of this index: 1:815,000

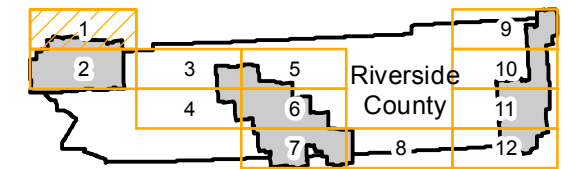
Copyright: © 2011 National Geographic Society, I-cubed

AXM-1959

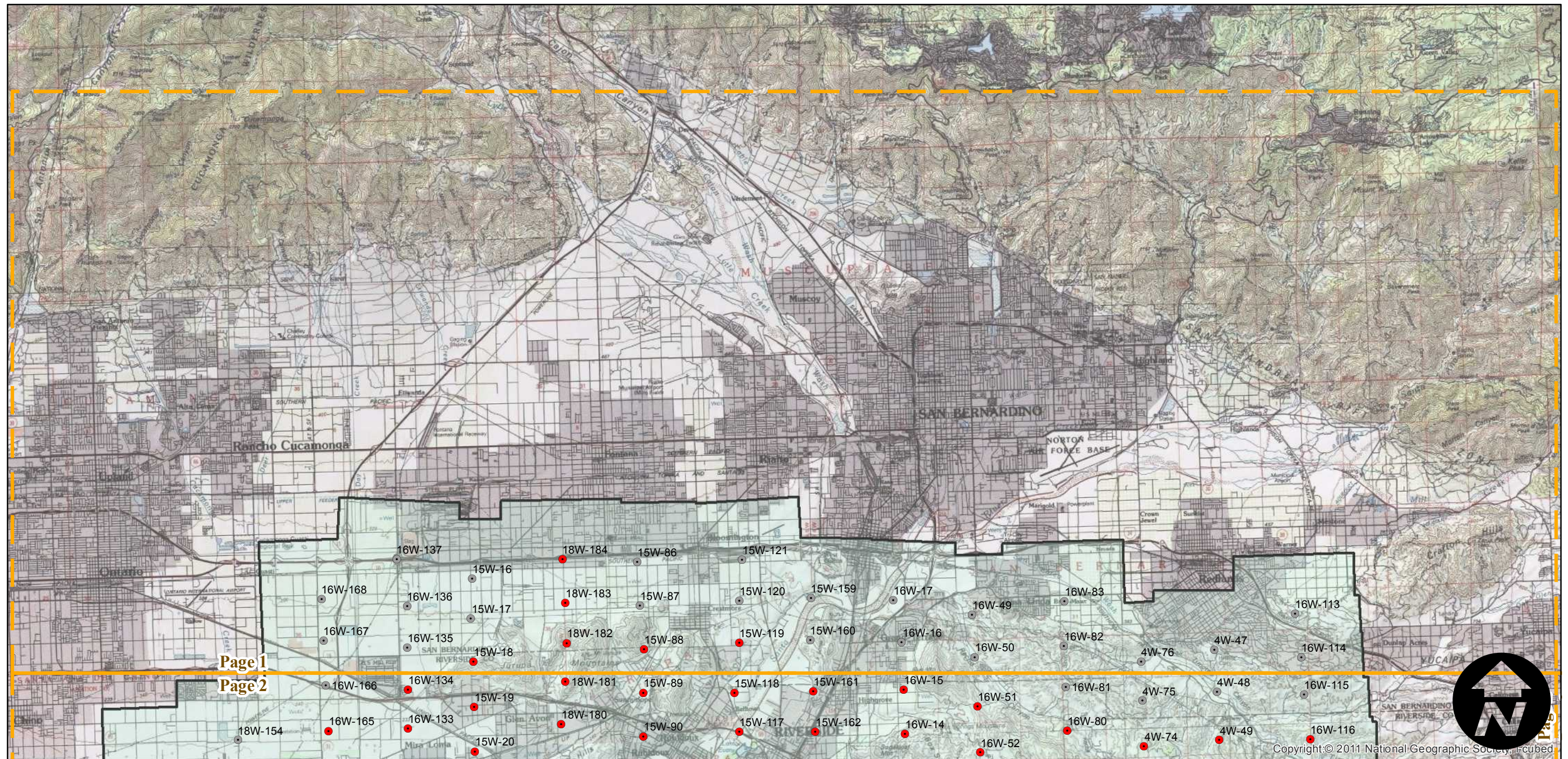
Counties: Riverside
Flight date(s): 01/01/1959 to 12/31/1959
Scale: 1:20,000
Overlap: 60%

Complete Metadata:
<http://www.library.ucsb.edu/mil/aerial-photography-tools>

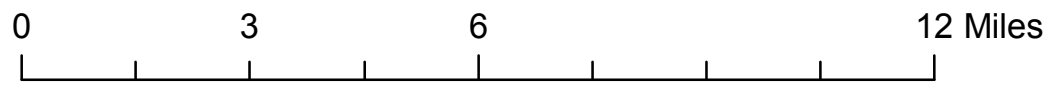
FLIGHT LOCATION



- MIL owns frame
- MIL does not own frame



Page 1
Page 2



Index to Aerial Photography
Page 1 of 12

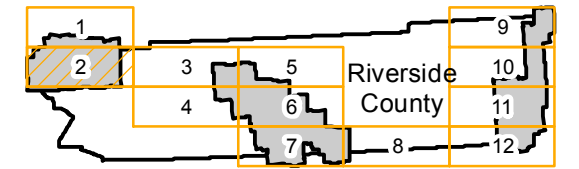
Scale of this index: 1:160,000

Copyright © 2011 National Geographic Society, Inc.

AXM-1959

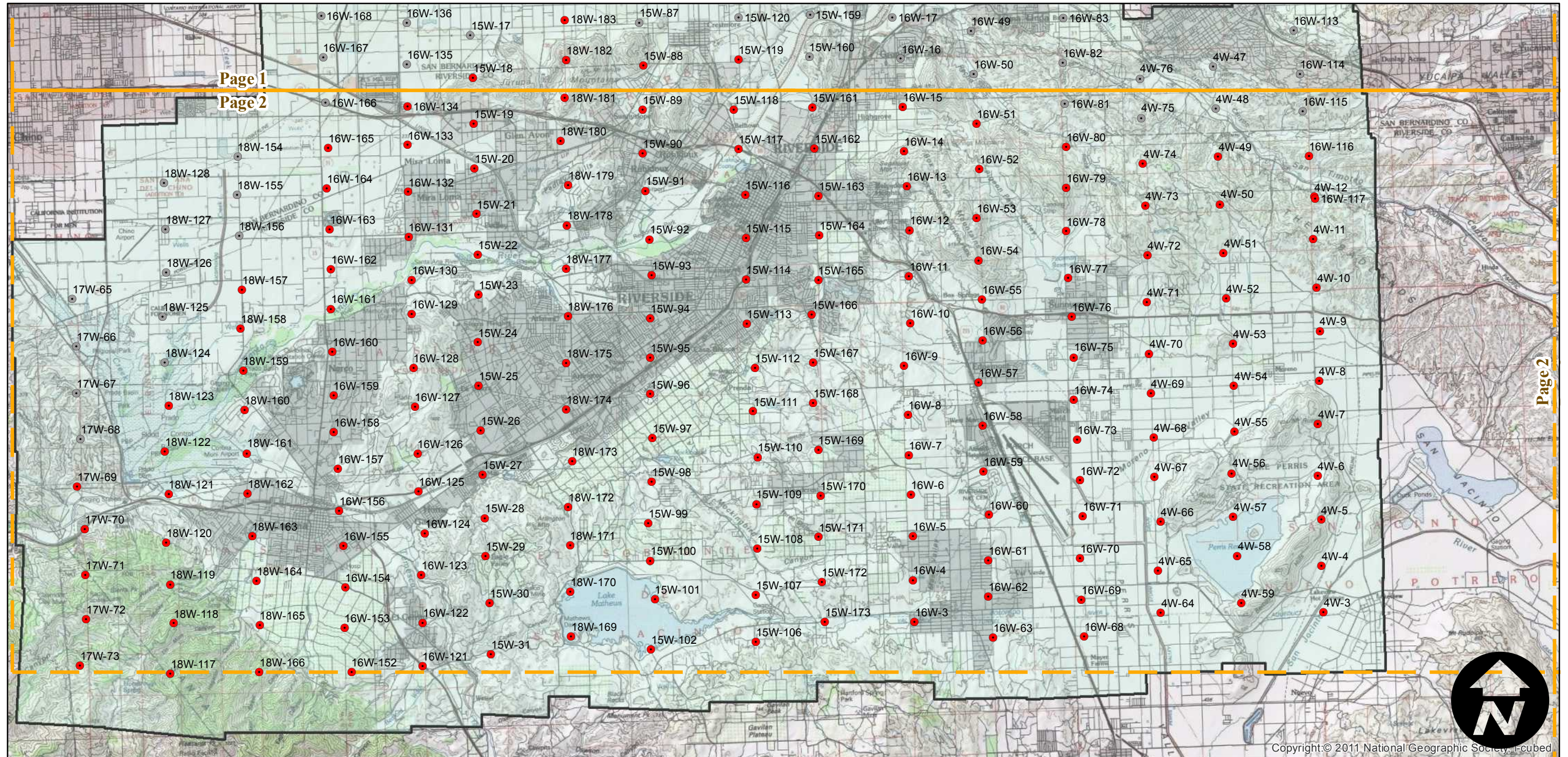
FLIGHT LOCATION

Counties: Riverside
Flight date(s): 01/01/1959 to 12/31/1959
Scale: 1:20,000
Overlap: 60%



Complete Metadata:
<http://www.library.ucsb.edu/mil/aerial-photography-tools>

- MIL owns frame
- MIL does not own frame



0 3 6 12 Miles

Index to Aerial Photography
Page 2 of 12

Scale of this index: 1:160,000

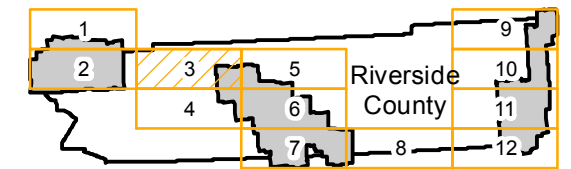
Copyright: © 2011 National Geographic Society, Inc.

AXM-1959

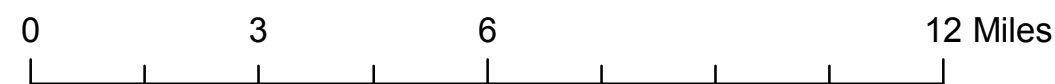
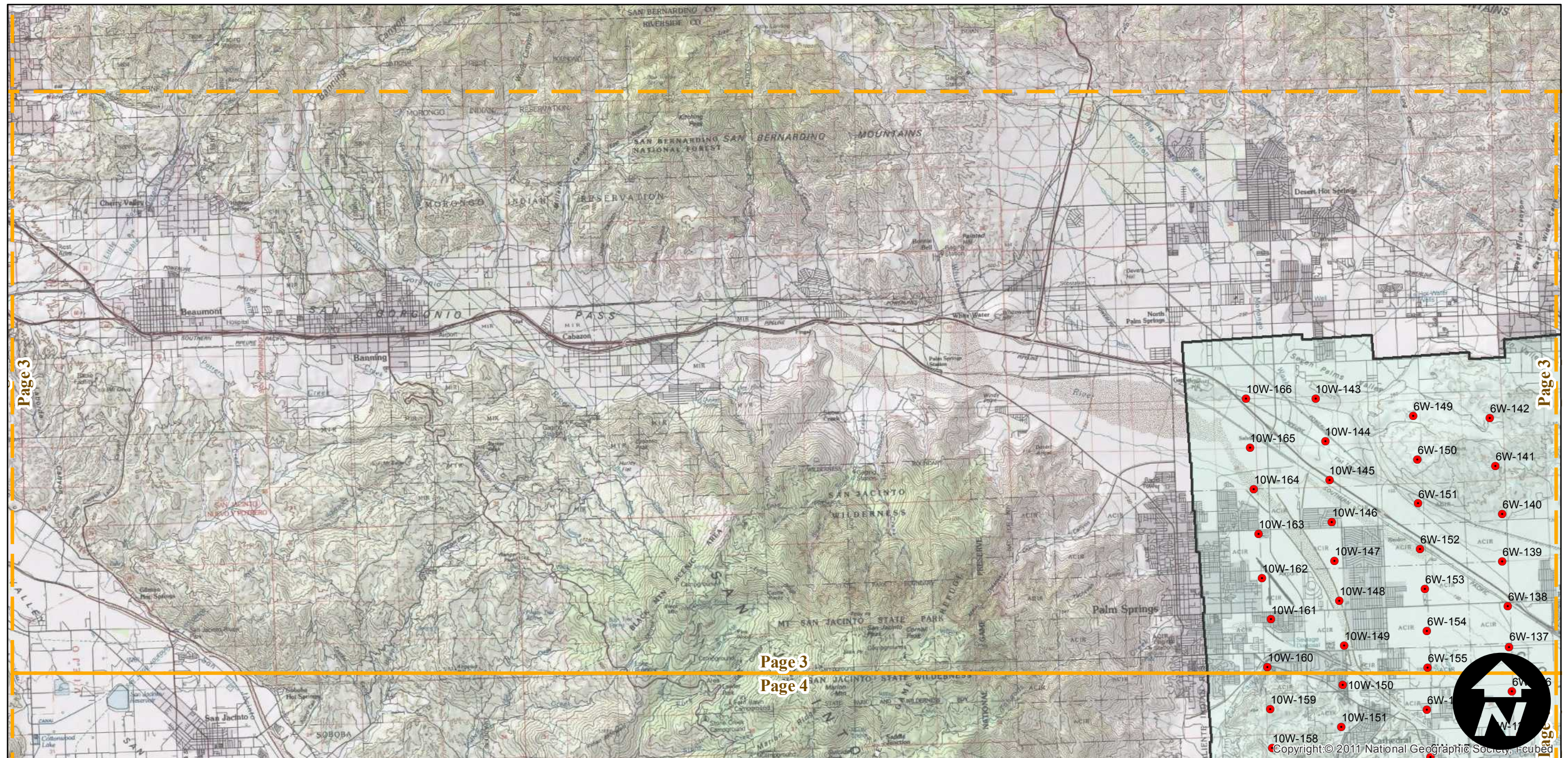
Counties: Riverside
Flight date(s): 01/01/1959 to 12/31/1959
Scale: 1:20,000
Overlap: 60%

Complete Metadata:
<http://www.library.ucsb.edu/mil/aerial-photography-tools>

FLIGHT LOCATION



- MIL owns frame
- MIL does not own frame



Index to Aerial Photography
Page 3 of 12

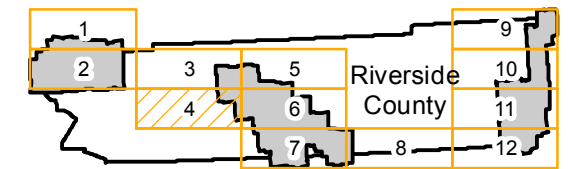
Scale of this index: 1:160,000

AXM-1959

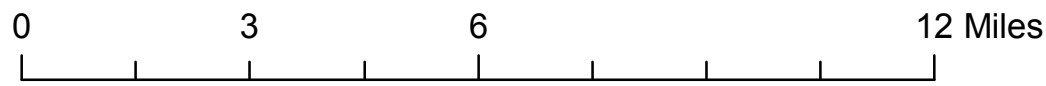
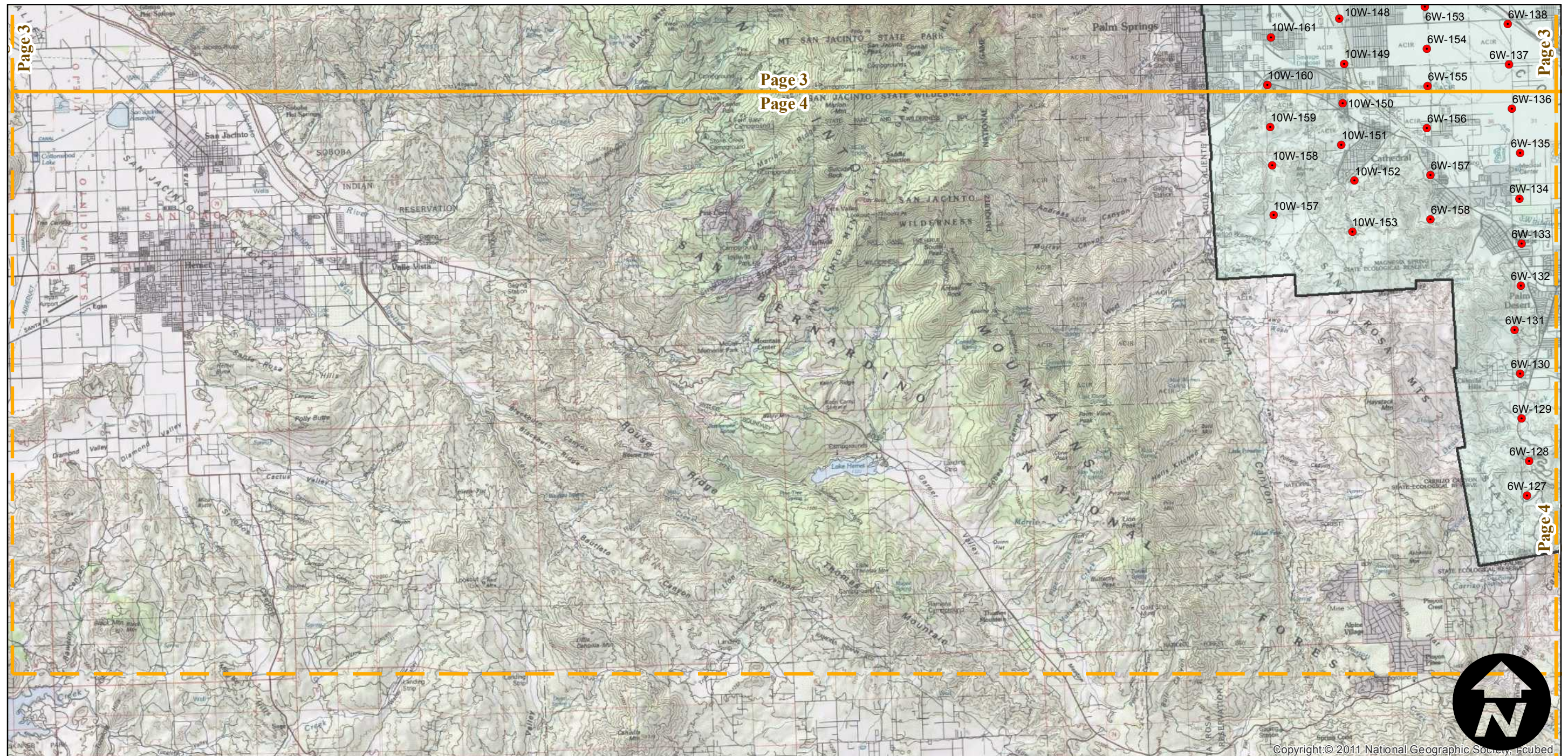
Counties: Riverside
Flight date(s): 01/01/1959 to 12/31/1959
Scale: 1:20,000
Overlap: 60%

Complete Metadata:
<http://www.library.ucsb.edu/mil/aerial-photography-tools>

FLIGHT LOCATION



- MIL owns frame
- MIL does not own frame



Index to Aerial Photography
Page 4 of 12

Scale of this index: 1:160,000

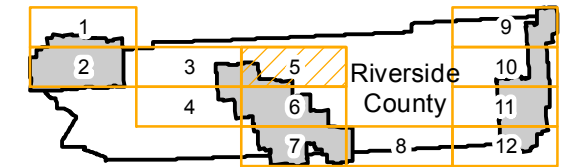


Copyright © 2011 National Geographic Society, Inc.

AXM-1959

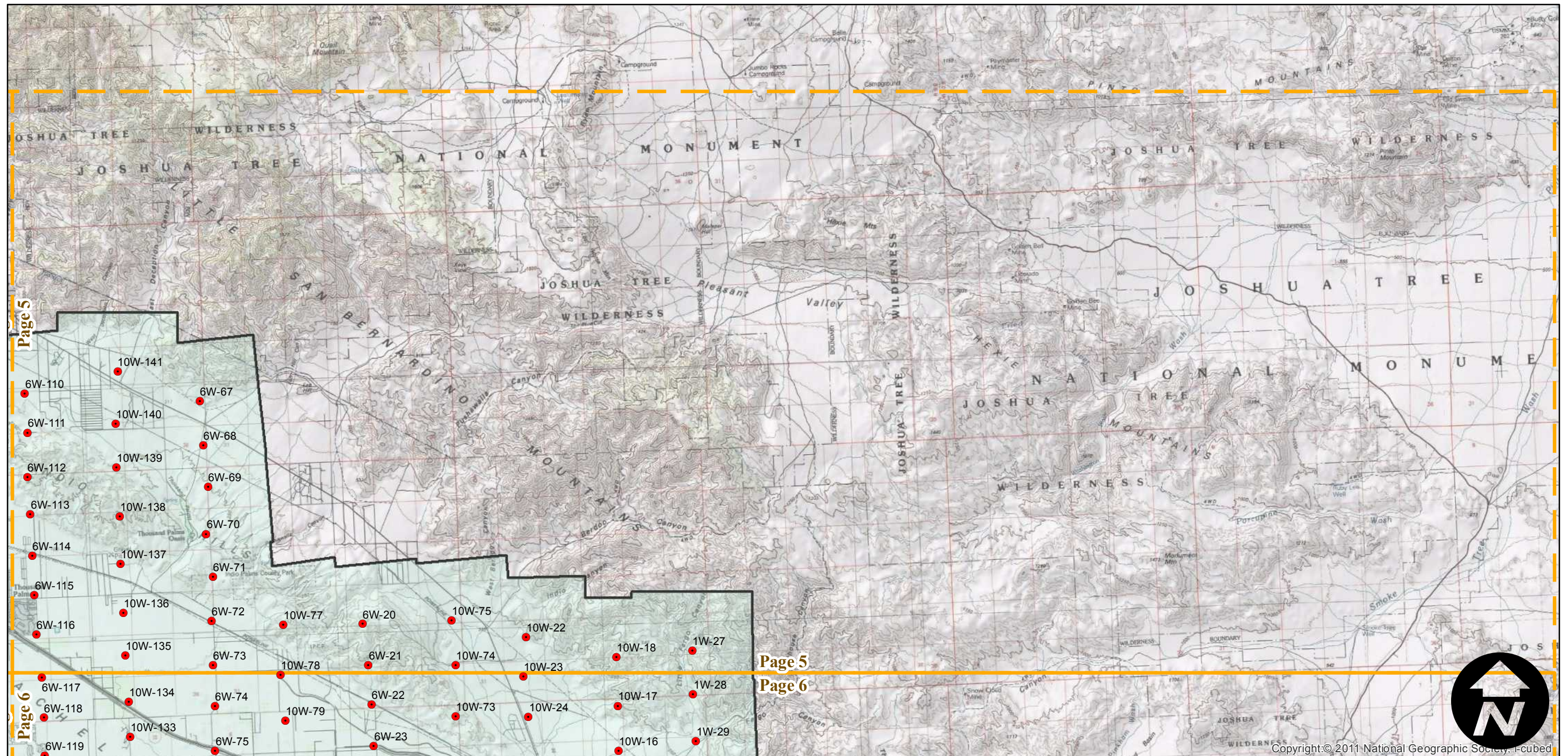
FLIGHT LOCATION

Counties: Riverside
Flight date(s): 01/01/1959 to 12/31/1959
Scale: 1:20,000
Overlap: 60%



Complete Metadata:
<http://www.library.ucsb.edu/mil/aerial-photography-tools>

- MIL owns frame
- MIL does not own frame



0 3 6 12 Miles

Index to Aerial Photography
Page 5 of 12

Scale of this index: 1:160,000

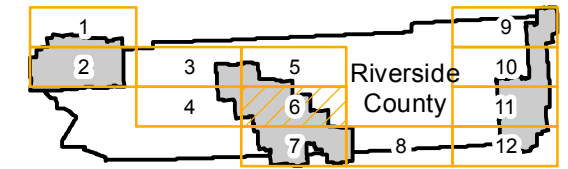


Copyright: © 2011 National Geographic Society, Inc. Cubed

AXM-1959

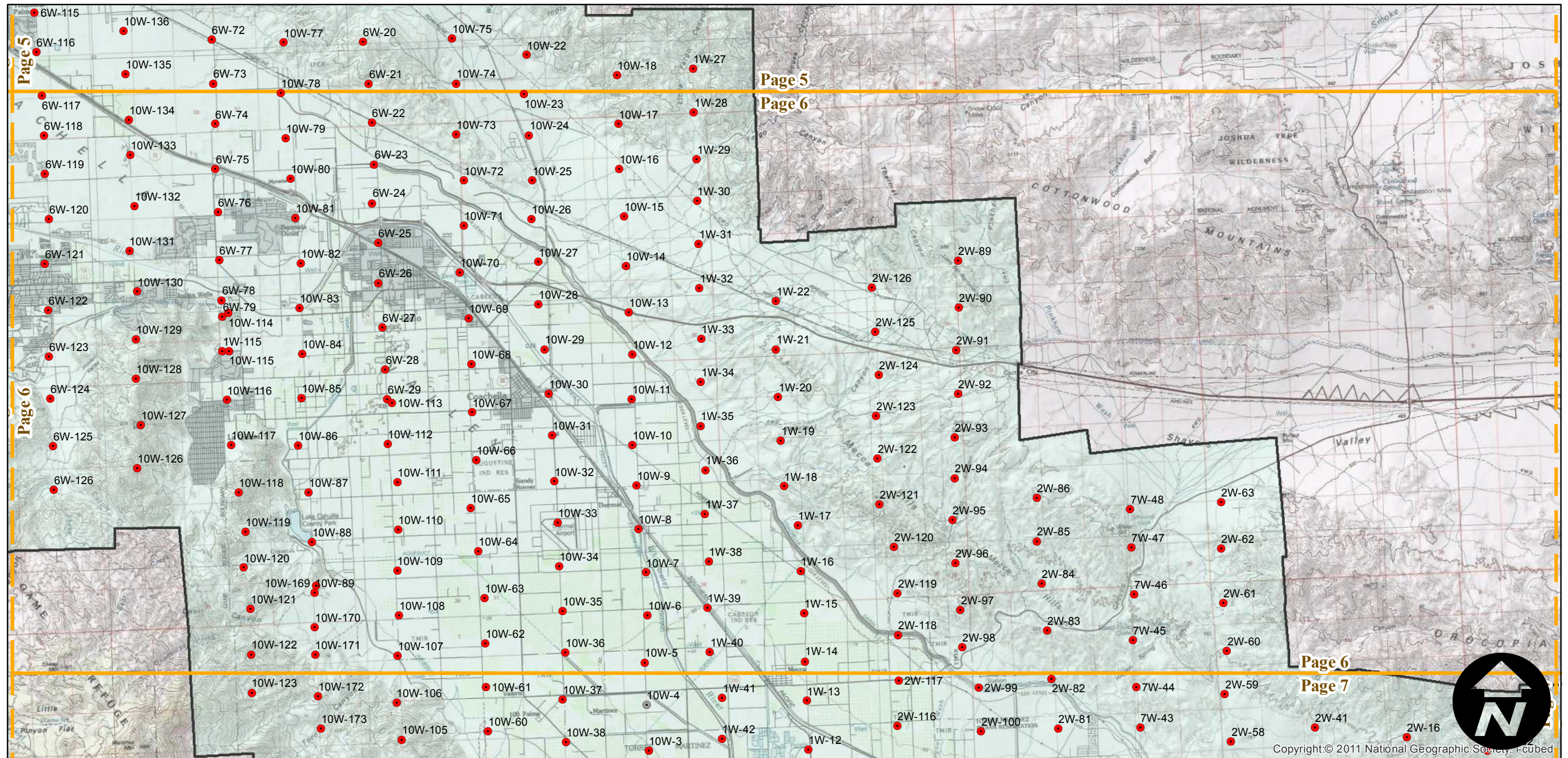
FLIGHT LOCATION

Counties: Riverside
Flight date(s): 01/01/1959 to 12/31/1959
Scale: 1:20,000
Overlap: 60%



Complete Metadata:
<http://www.library.ucsb.edu/mil/aerial-photography-tools>

- MIL owns frame
- MIL does not own frame



0 3 6 12 Miles

Index to Aerial Photography
Page 6 of 12

Scale of this index: 1:160,000

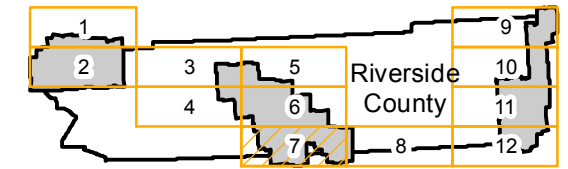
Copyright: © 2011 National Geographic Society, Inc.

AXM-1959

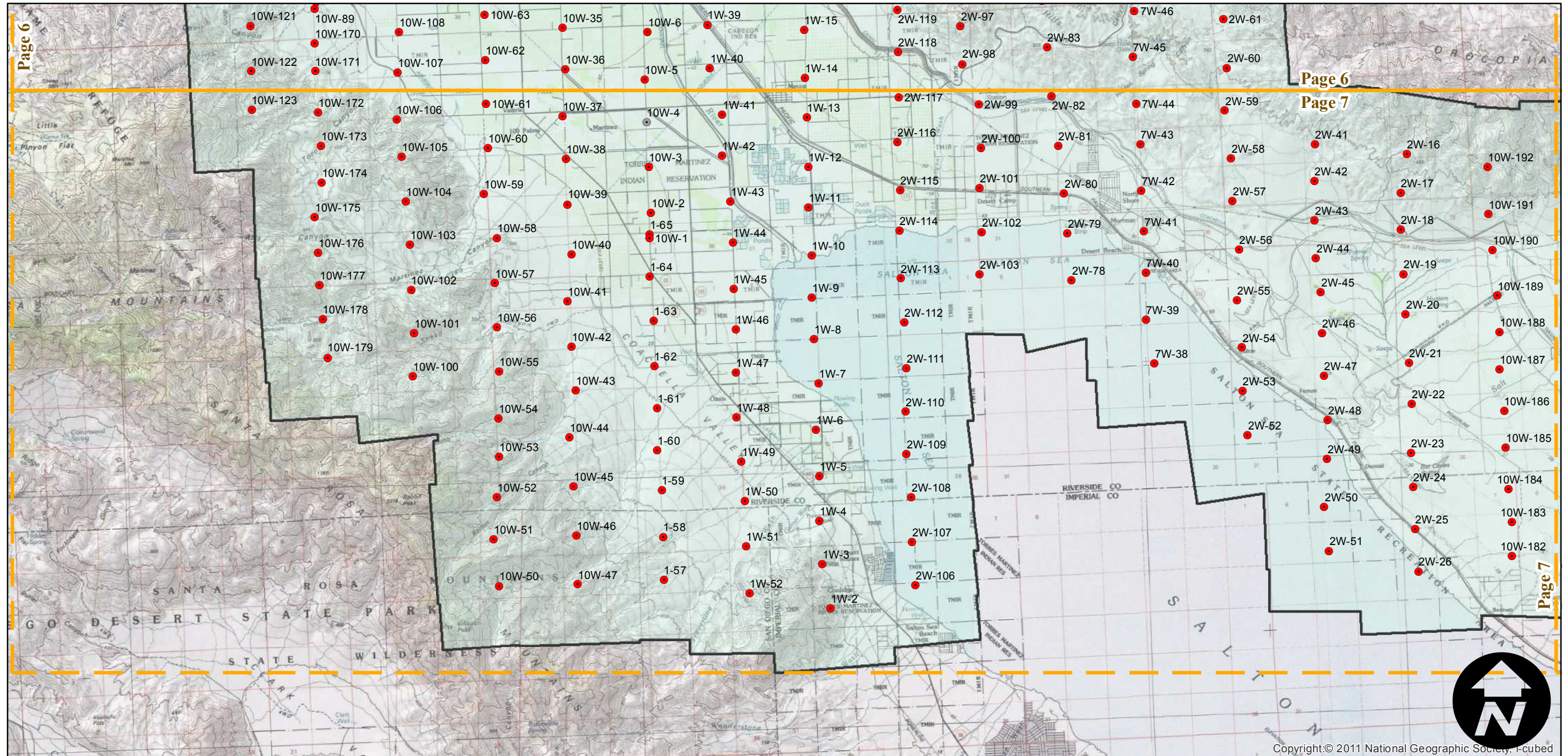
Counties: Riverside
Flight date(s): 01/01/1959 to 12/31/1959
Scale: 1:20,000
Overlap: 60%

Complete Metadata:
<http://www.library.ucsb.edu/mil/aerial-photography-tools>

FLIGHT LOCATION



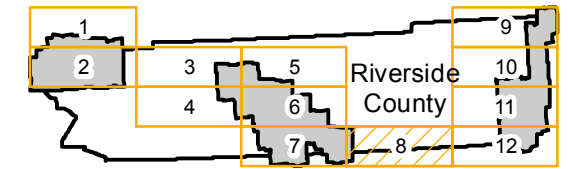
- MIL owns frame
- MIL does not own frame



AXM-1959

FLIGHT LOCATION

Counties: Riverside
Flight date(s): 01/01/1959 to 12/31/1959
Scale: 1:20,000
Overlap: 60%



Complete Metadata:
<http://www.library.ucsb.edu/mil/aerial-photography-tools>

- MIL owns frame
- MIL does not own frame



0 3 6 12 Miles

Index to Aerial Photography
Page 8 of 12

Scale of this index: 1:160,000

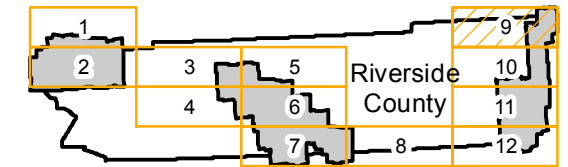
Copyright: © 2011 National Geographic Society, Fcubed

AXM-1959

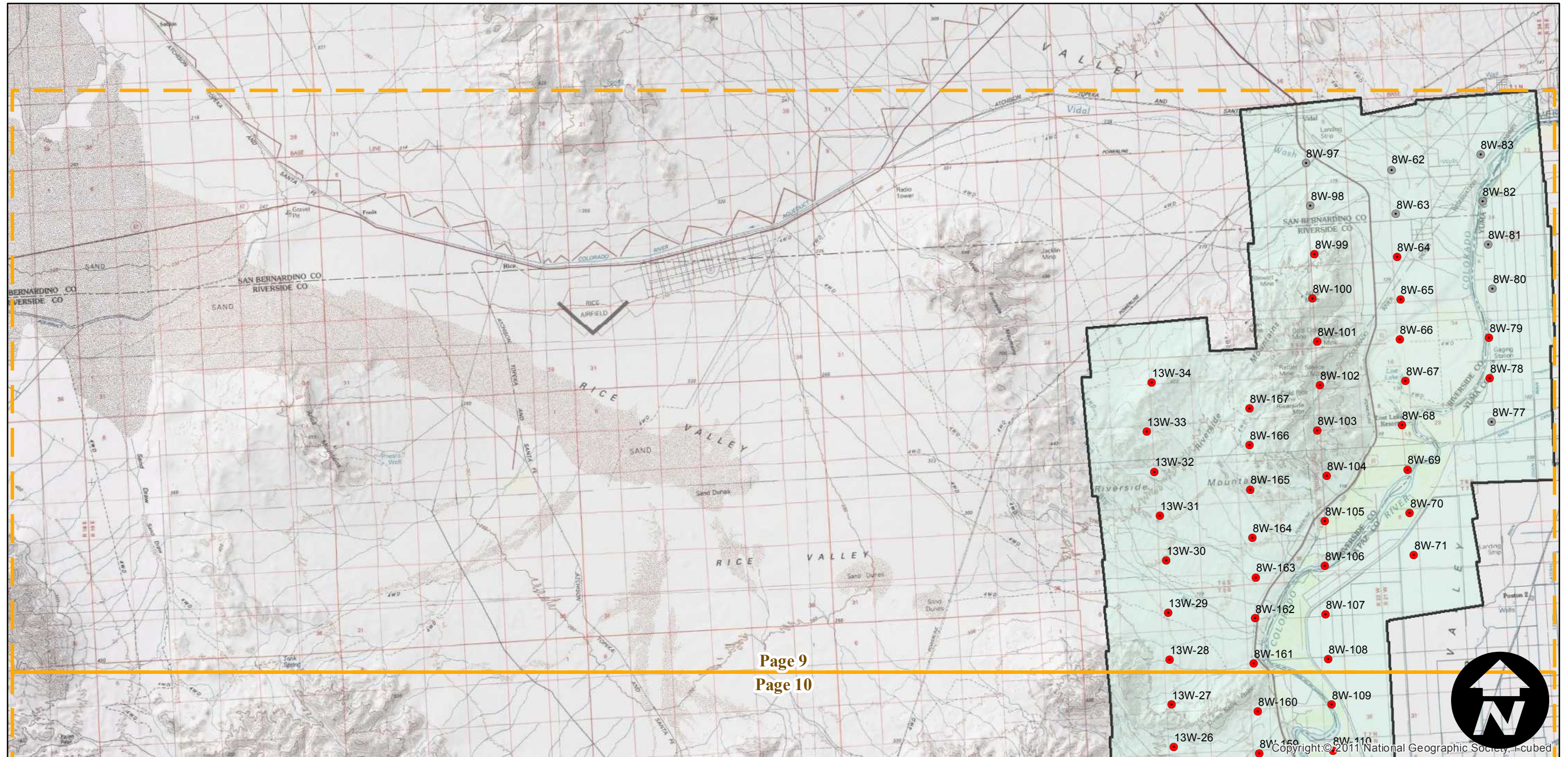
Counties: Riverside
Flight date(s): 01/01/1959 to 12/31/1959
Scale: 1:20,000
Overlap: 60%

Complete Metadata:
<http://www.library.ucsb.edu/mil/aerial-photography-tools>

FLIGHT LOCATION



- MIL owns frame
- MIL does not own frame



0 3 6 12 Miles

Index to Aerial Photography
Page 9 of 12

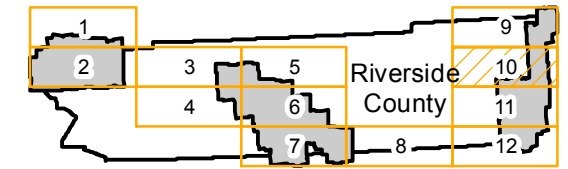
Scale of this index: 1:160,000

AXM-1959

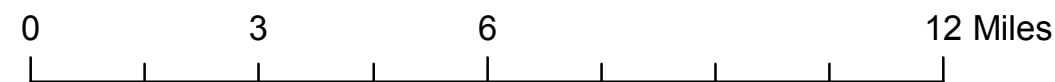
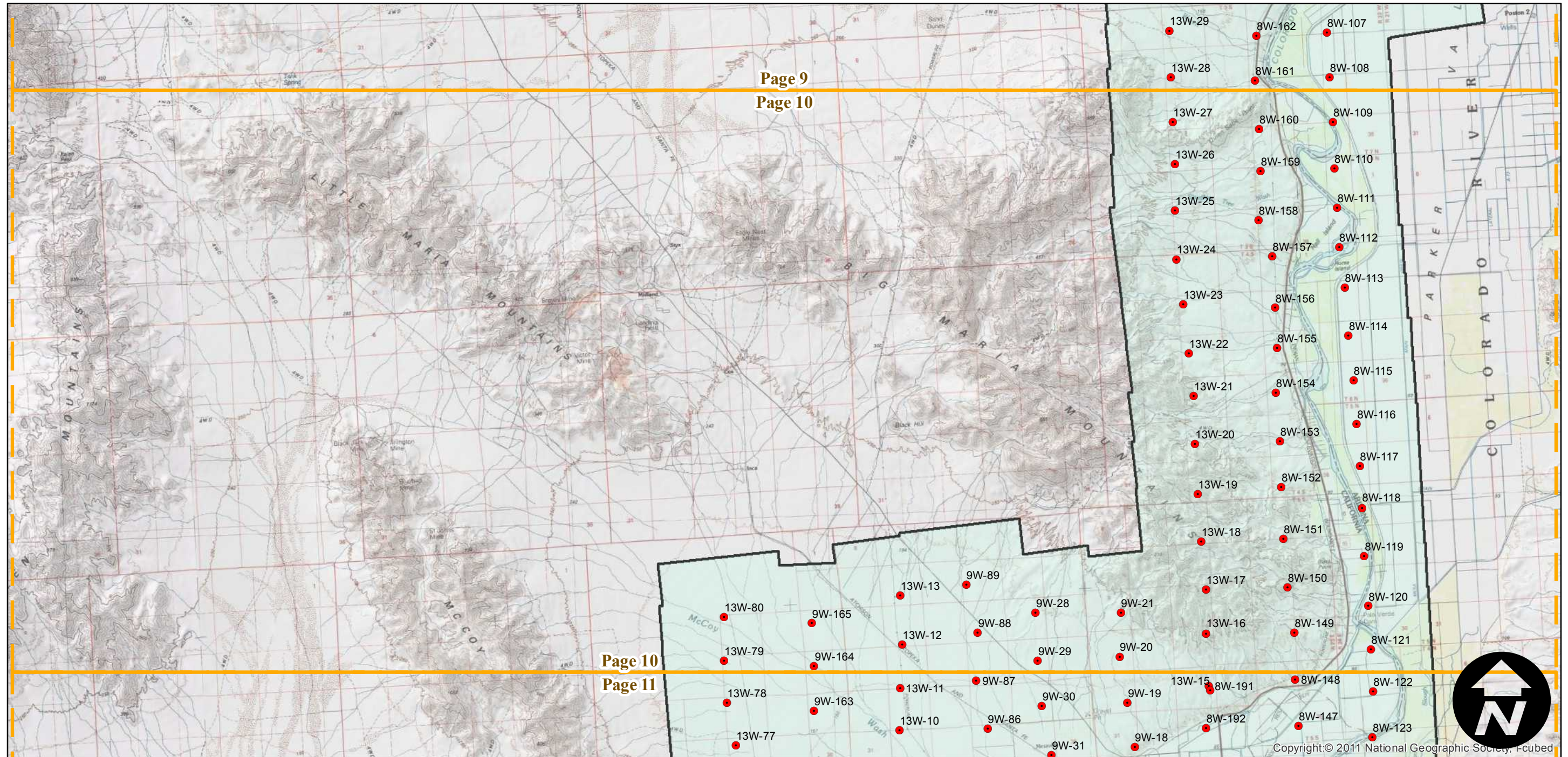
Counties: Riverside
Flight date(s): 01/01/1959 to 12/31/1959
Scale: 1:20,000
Overlap: 60%

Complete Metadata:
<http://www.library.ucsb.edu/mil/aerial-photography-tools>

FLIGHT LOCATION



- MIL owns frame
- MIL does not own frame

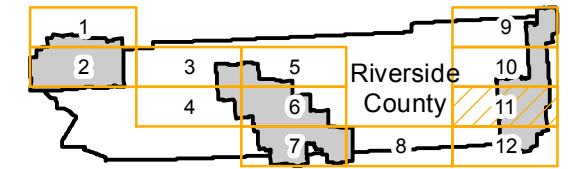


AXM-1959

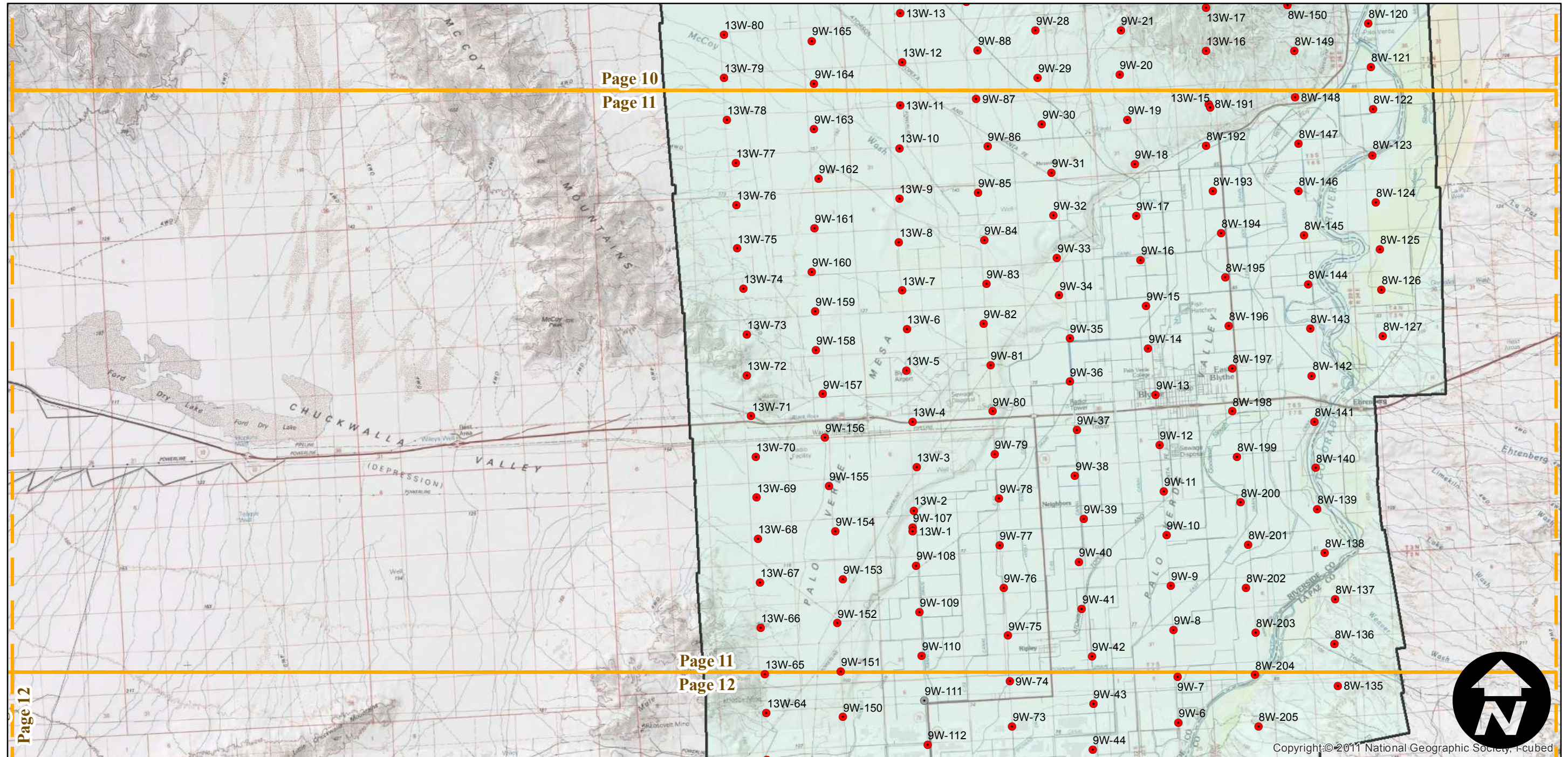
Counties: Riverside
Flight date(s): 01/01/1959 to 12/31/1959
Scale: 1:20,000
Overlap: 60%

Complete Metadata:
<http://www.library.ucsb.edu/mil/aerial-photography-tools>

FLIGHT LOCATION



- MIL owns frame
- MIL does not own frame



Copyright © 2011 National Geographic Society, Inc. Used by permission.

0 3 6 12 Miles

Index to Aerial Photography
Page 11 of 12

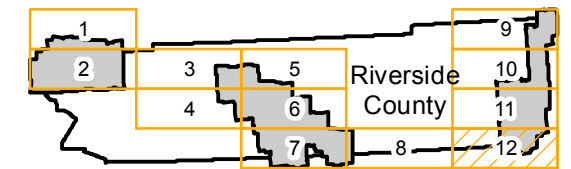
Scale of this index: 1:160,000

AXM-1959

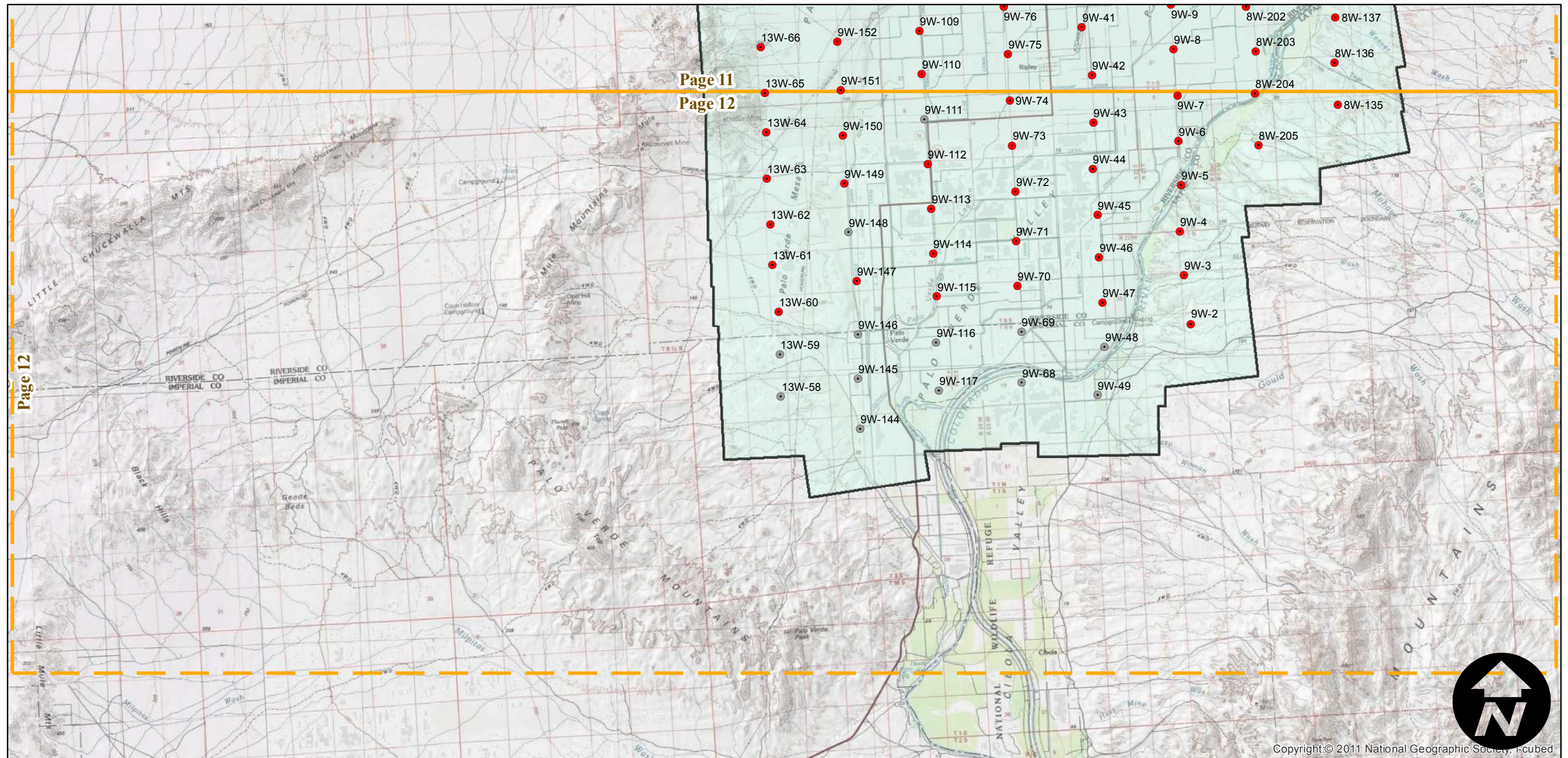
Counties: Riverside
Flight date(s): 01/01/1959 to 12/31/1959
Scale: 1:20,000
Overlap: 60%

Complete Metadata:
<http://www.library.ucsb.edu/mil/aerial-photography-tools>

FLIGHT LOCATION



- MIL owns frame
- MIL does not own frame



Copyright: © 2011 National Geographic Society, Incubed

0 3 6 12 Miles

Index to Aerial Photography
Page 12 of 12

Scale of this index: 1:160,000