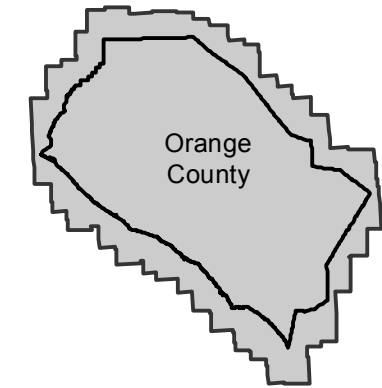


# AXK-1953

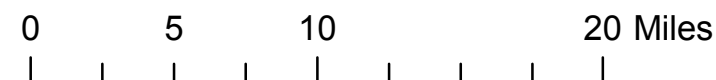
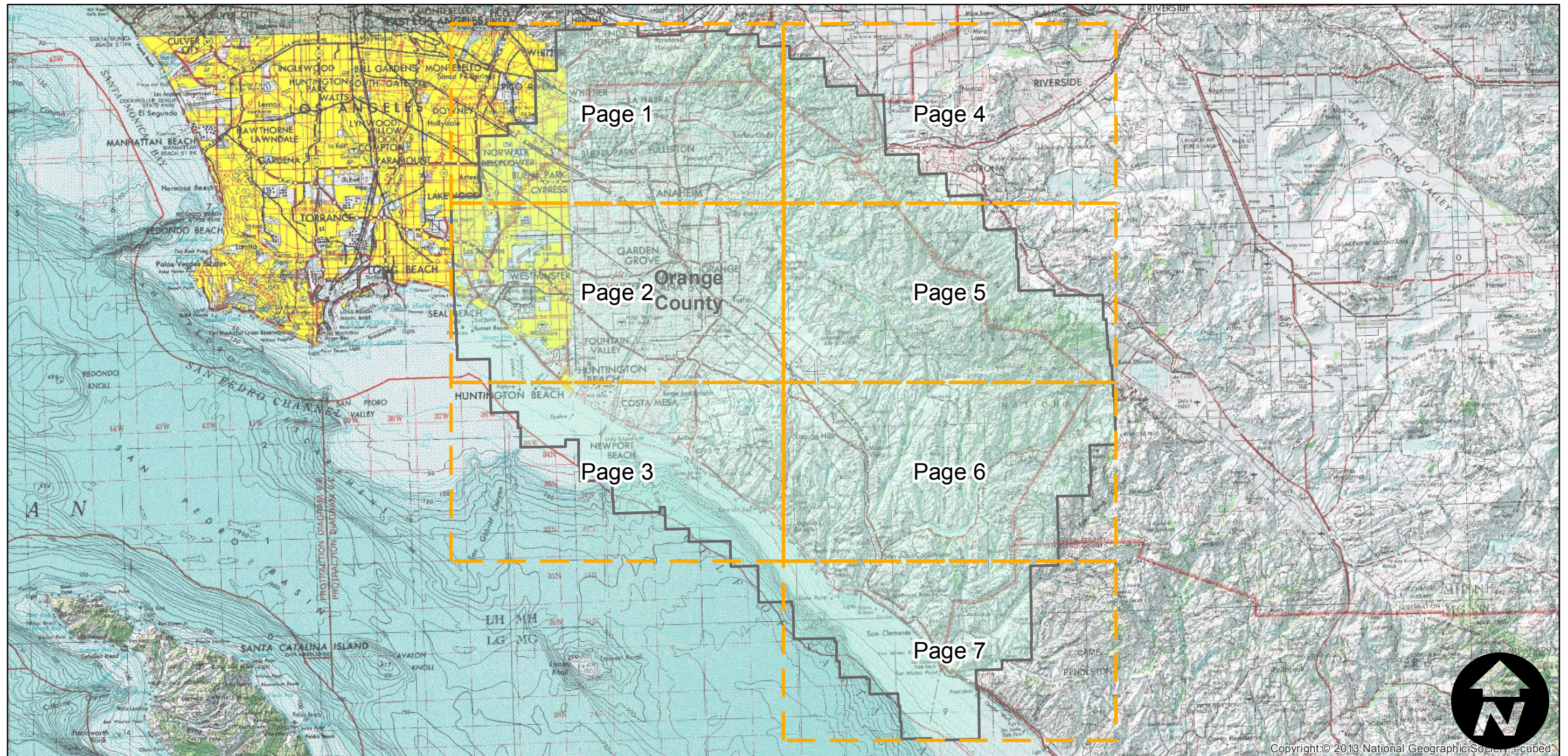
Counties: Orange  
Flight date(s): 11-18-1952 to 06-30-1953  
Scale: 1:20,000  
Overlap: 60%

Note: MIL has additional frames not shown on index.

## FLIGHT LOCATION



Complete Metadata:  
<http://www.library.ucsb.edu/mil/aerial-photography-tools>



Index to Aerial Photography  
Page Key

Scale of this index: 1:425,000



# AXK-1953

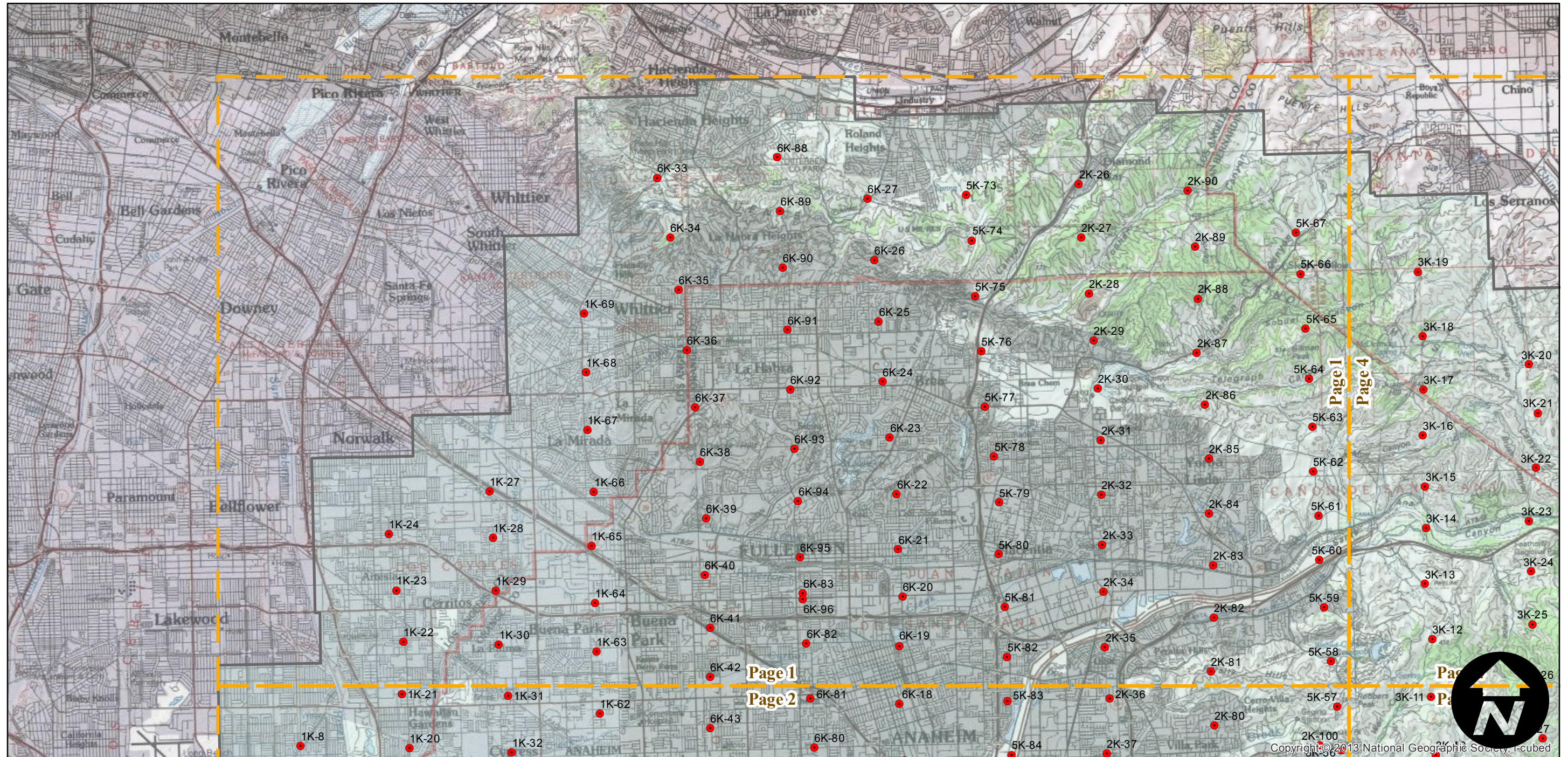
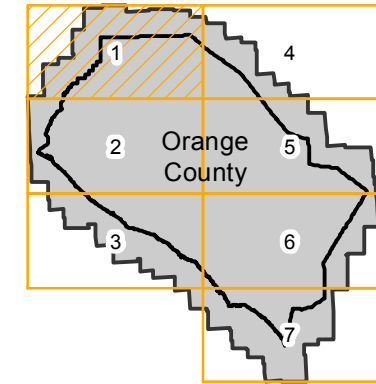
Counties: Orange  
Flight date(s): 11-18-1952 to 06-30-1953  
Scale: 1:20,000  
Overlap: 60%

Complete Metadata:  
<http://www.library.ucsb.edu/mil/aerial-photography-tools>

Note: MIL has additional frames not shown on index.

- MIL owns frame
- MIL does not own frame

## FLIGHT LOCATION





# AXK-1953

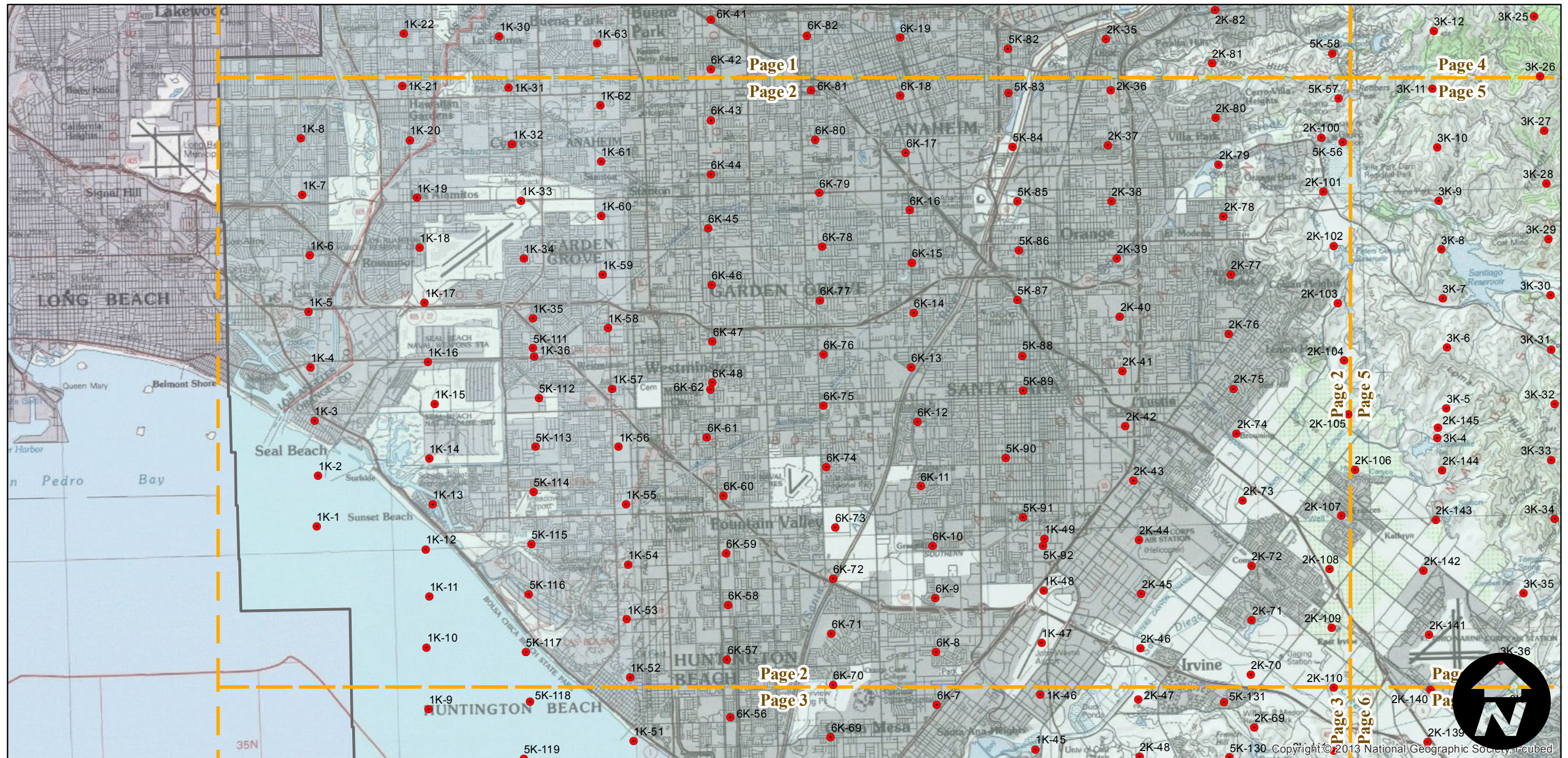
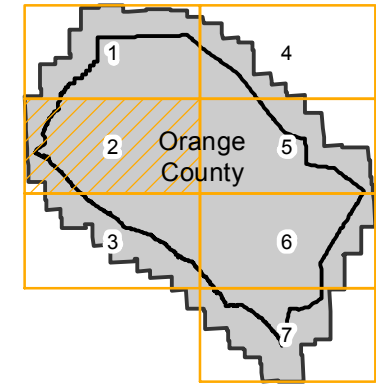
Counties: Orange  
Flight date(s): 11-18-1952 to 06-30-1953  
Scale: 1:20,000  
Overlap: 60%

Complete Metadata:  
<http://www.library.ucsb.edu/mil/aerial-photography-tools>

Note: MIL has additional frames not shown on index.

- MIL owns frame
- MIL does not own frame

## FLIGHT LOCATION



0 2.5 5 10 Miles

Index to Aerial Photography  
Page 2 of 7

Scale of this index: 1:125,000



# AXK-1953

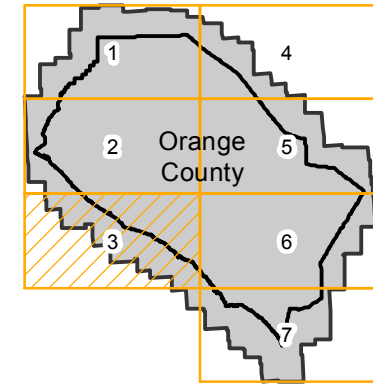
Counties: Orange  
Flight date(s): 11-18-1952 to 06-30-1953  
Scale: 1:20,000  
Overlap: 60%

Complete Metadata:  
<http://www.library.ucsb.edu/mil/aerial-photography-tools>

Note: MIL has additional frames not shown on index.

- MIL owns frame
- MIL does not own frame

## FLIGHT LOCATION



0 2.5 5 10 Miles

Index to Aerial Photography  
Page 3 of 7

Scale of this index: 1:125,000



# AXK-1953

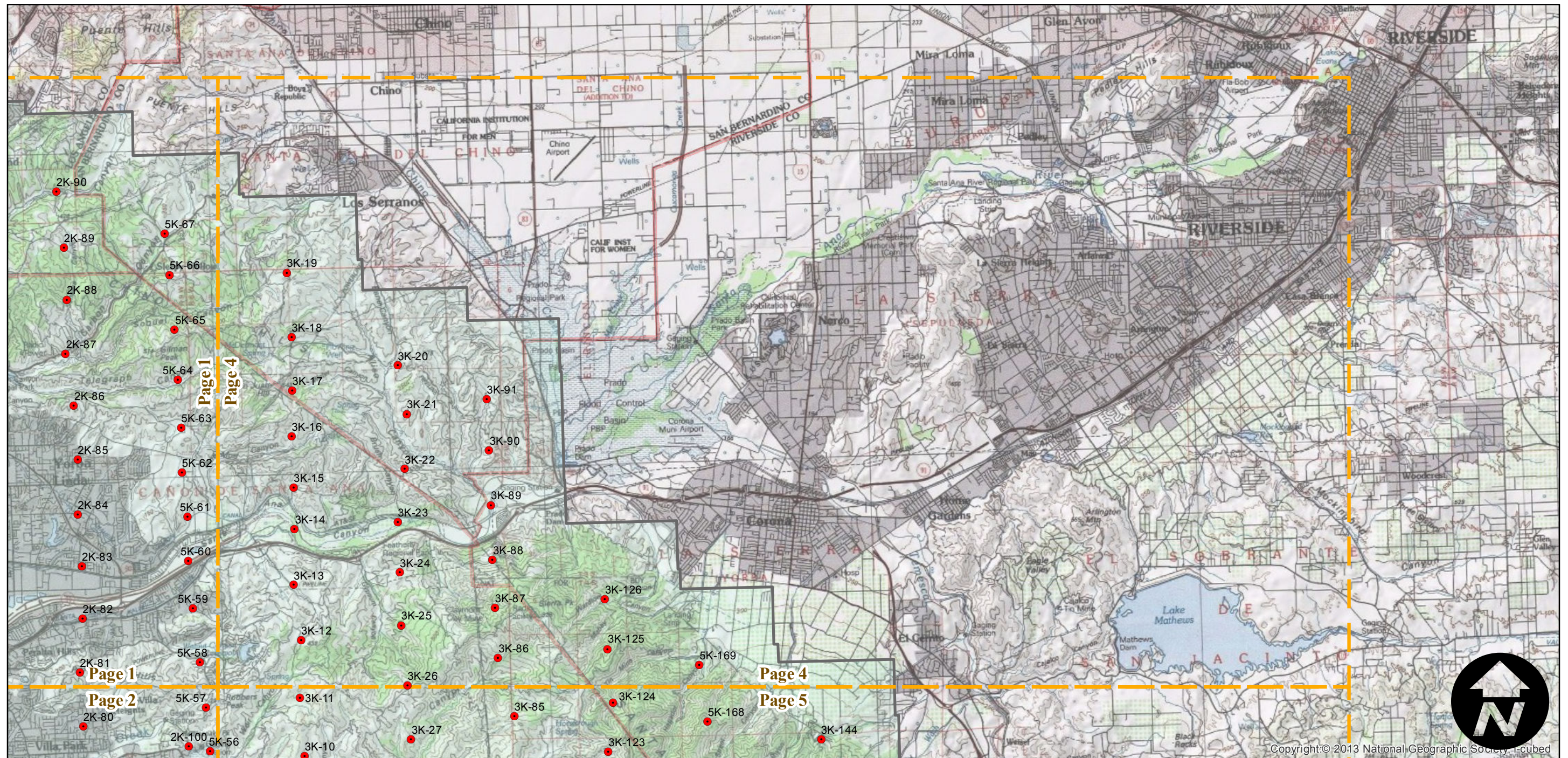
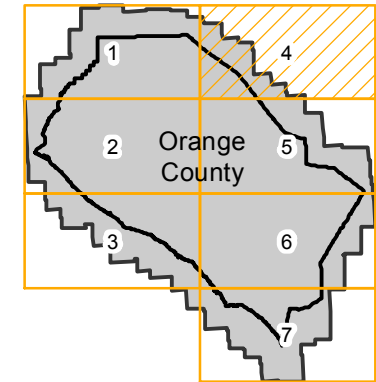
Counties: Orange  
 Flight date(s): 11-18-1952 to 06-30-1953  
 Scale: 1:20,000  
 Overlap: 60%

Complete Metadata:  
<http://www.library.ucsb.edu/mil/aerial-photography-tools>

Note: MIL has additional frames not shown on index.

- MIL owns frame
- MIL does not own frame

## FLIGHT LOCATION



0 2.5 5 10 Miles

Index to Aerial Photography  
 Page 4 of 7

Scale of this index: 1:125,000

Copyright © 2013 National Geographic Society, I-cubed



# AXK-1953

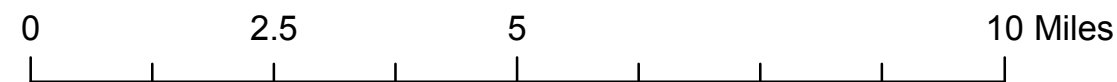
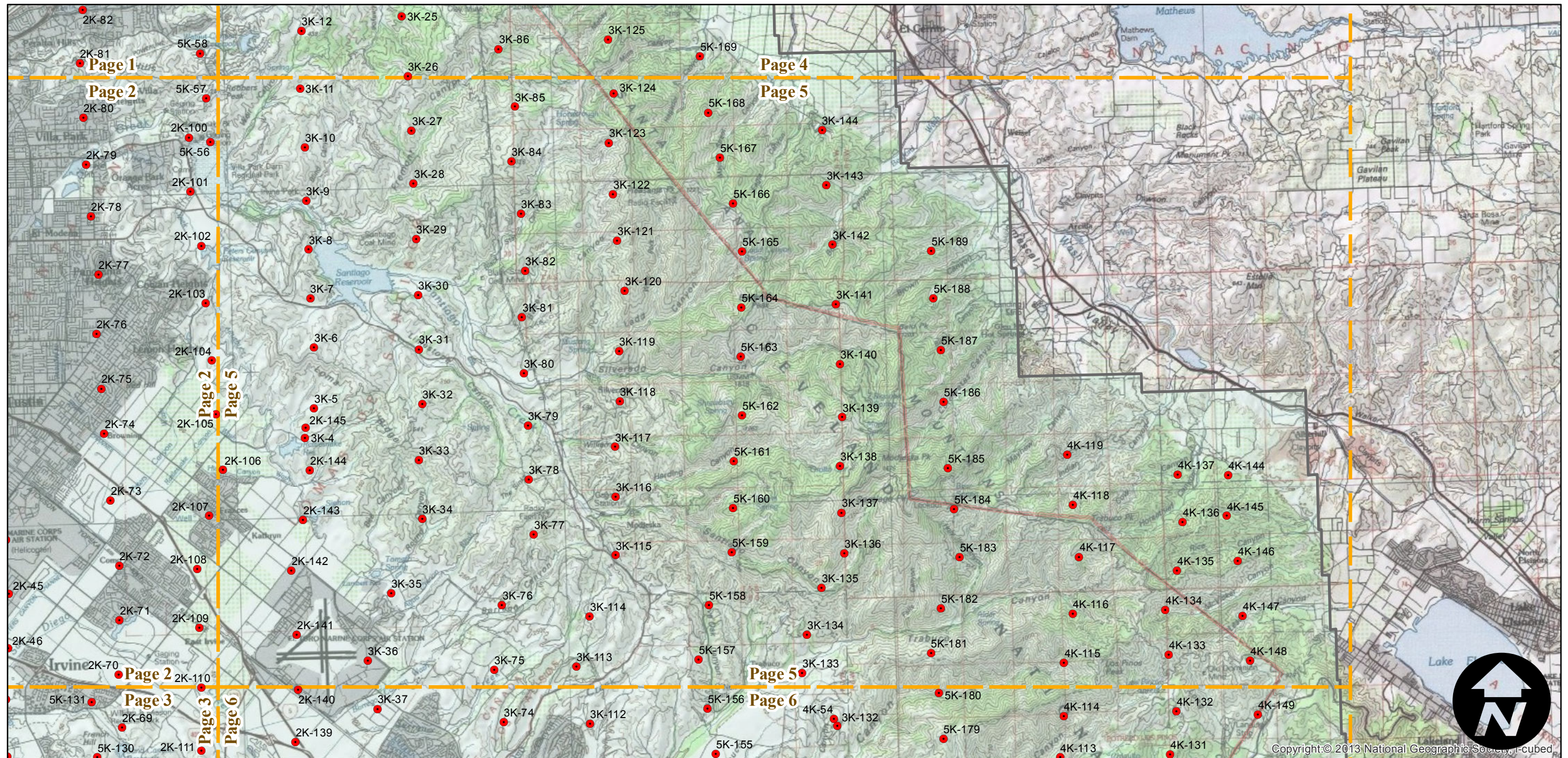
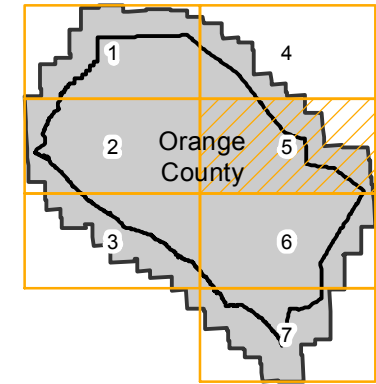
Counties: Orange  
 Flight date(s): 11-18-1952 to 06-30-1953  
 Scale: 1:20,000  
 Overlap: 60%

Complete Metadata:  
<http://www.library.ucsb.edu/mil/aerial-photography-tools>

Note: MIL has additional frames not shown on index.

- MIL owns frame
- MIL does not own frame

## FLIGHT LOCATION





# AXK-1953

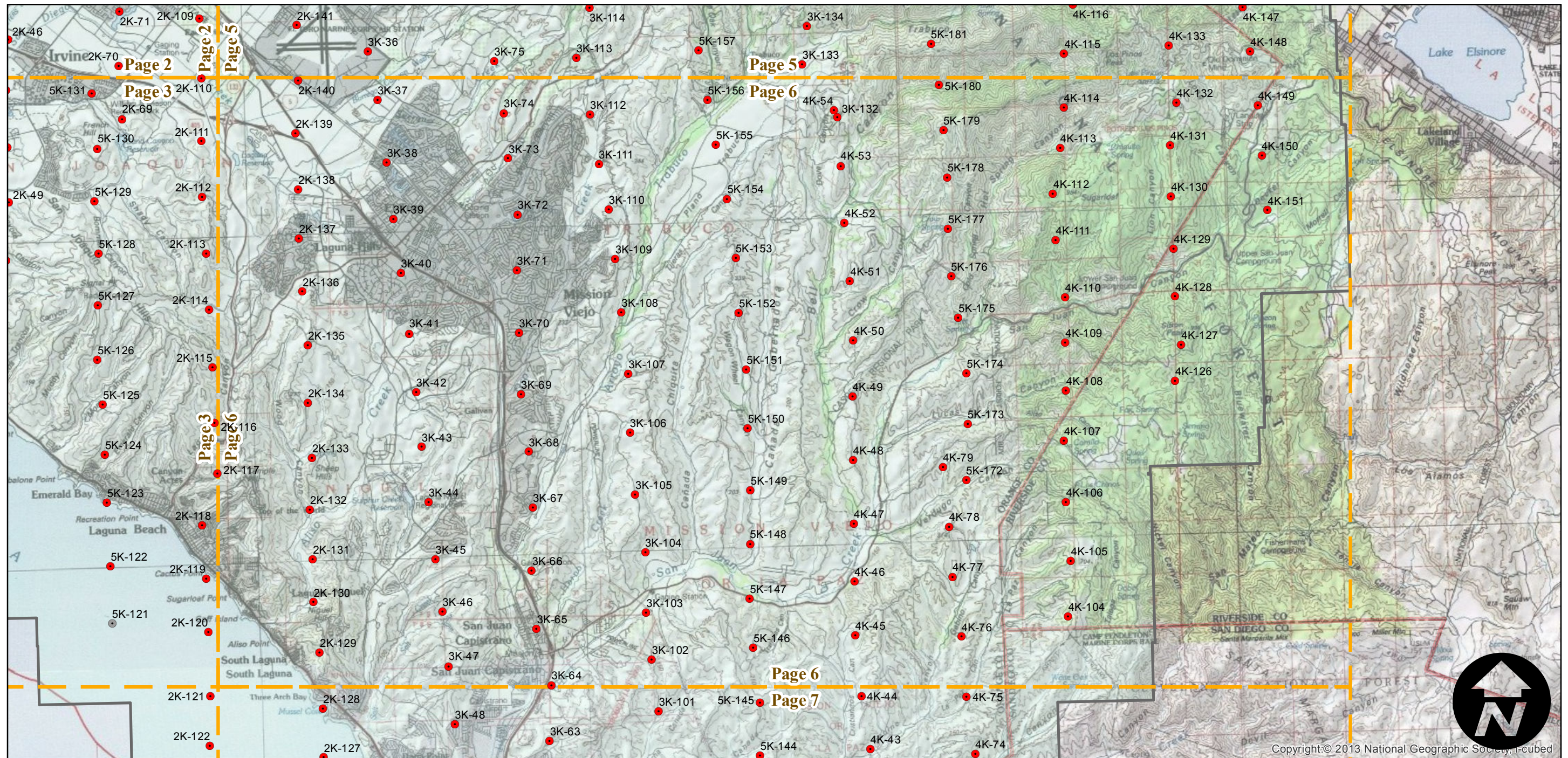
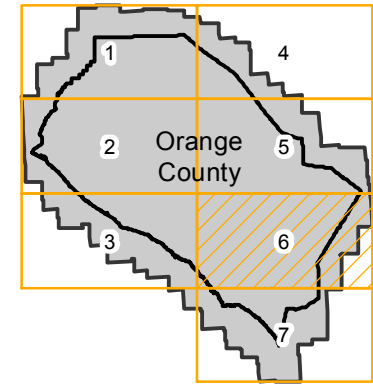
Counties: Orange  
Flight date(s): 11-18-1952 to 06-30-1953  
Scale: 1:20,000  
Overlap: 60%

Complete Metadata:  
<http://www.library.ucsb.edu/mil/aerial-photography-tools>

Note: MIL has additional frames not shown on index.

- MIL owns frame
- MIL does not own frame

## FLIGHT LOCATION



0 2.5 5 10 Miles

Index to Aerial Photography  
Page 6 of 7

Scale of this index: 1:125,000

Copyright: © 2013 National Geographic Society, i-cubed



# AXK-1953

Counties: Orange  
Flight date(s): 11-18-1952 to 06-30-1953  
Scale: 1:20,000  
Overlap: 60%

Complete Metadata:  
<http://www.library.ucsb.edu/mil/aerial-photography-tools>

Note: MIL has additional frames not shown on index.

- MIL owns frame
- MIL does not own frame

## FLIGHT LOCATION

