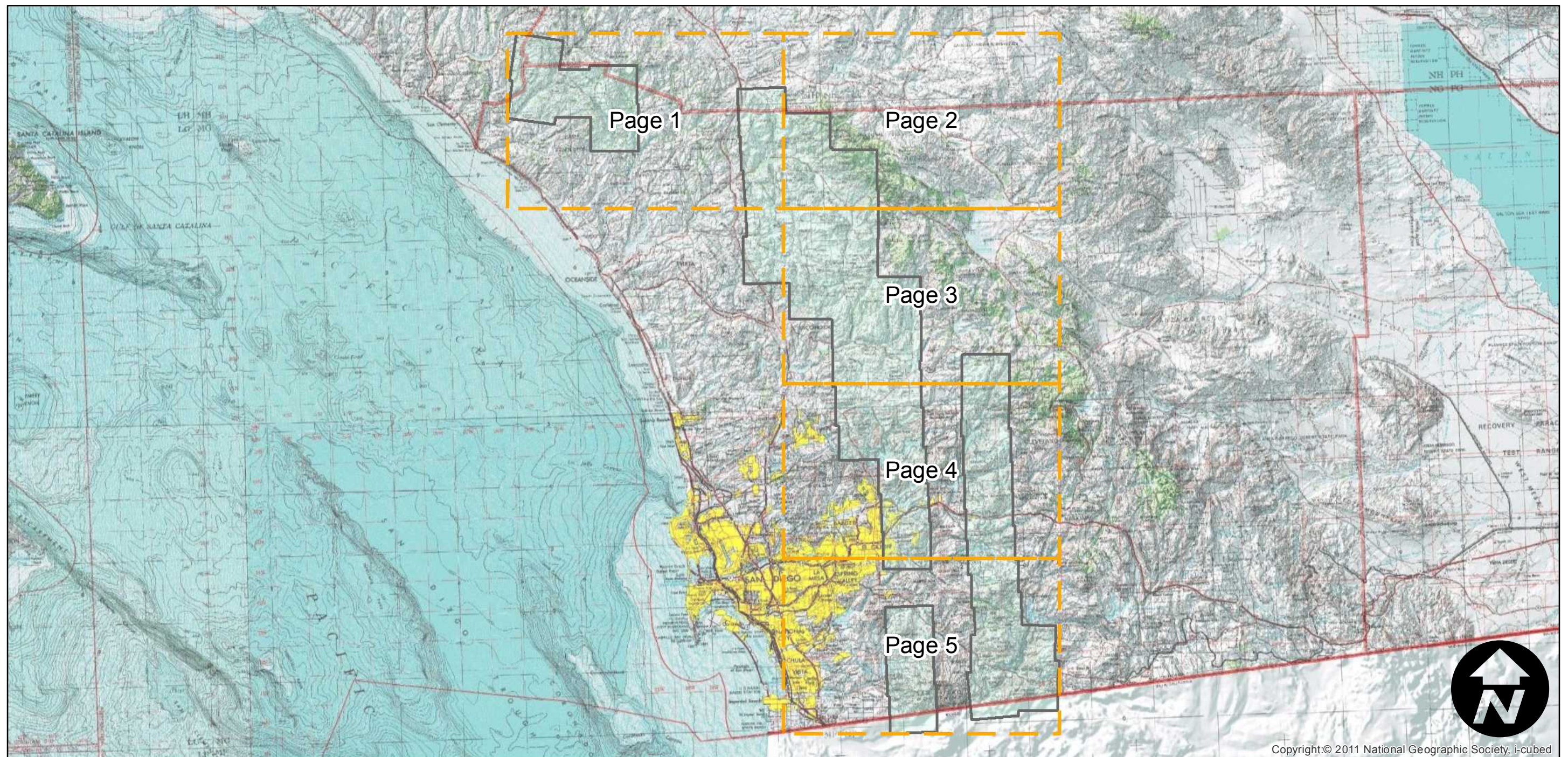
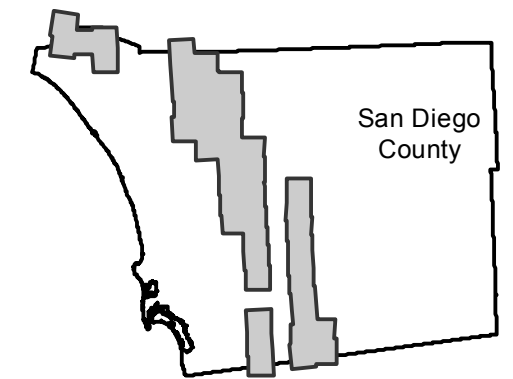


AMI-SD-76 (1:34K)

Counties: San Diego
Flight date(s): 10-27-1976 to 11-02-1976
Scale: 1:34,000
Overlap: 20%

Complete Metadata:
<http://www.library.ucsb.edu/mil/aerial-photography-tools>

FLIGHT LOCATION



0 12.5 25 50 Miles

Index to Aerial Photography
Page Key

Scale of this index: 1:650,000

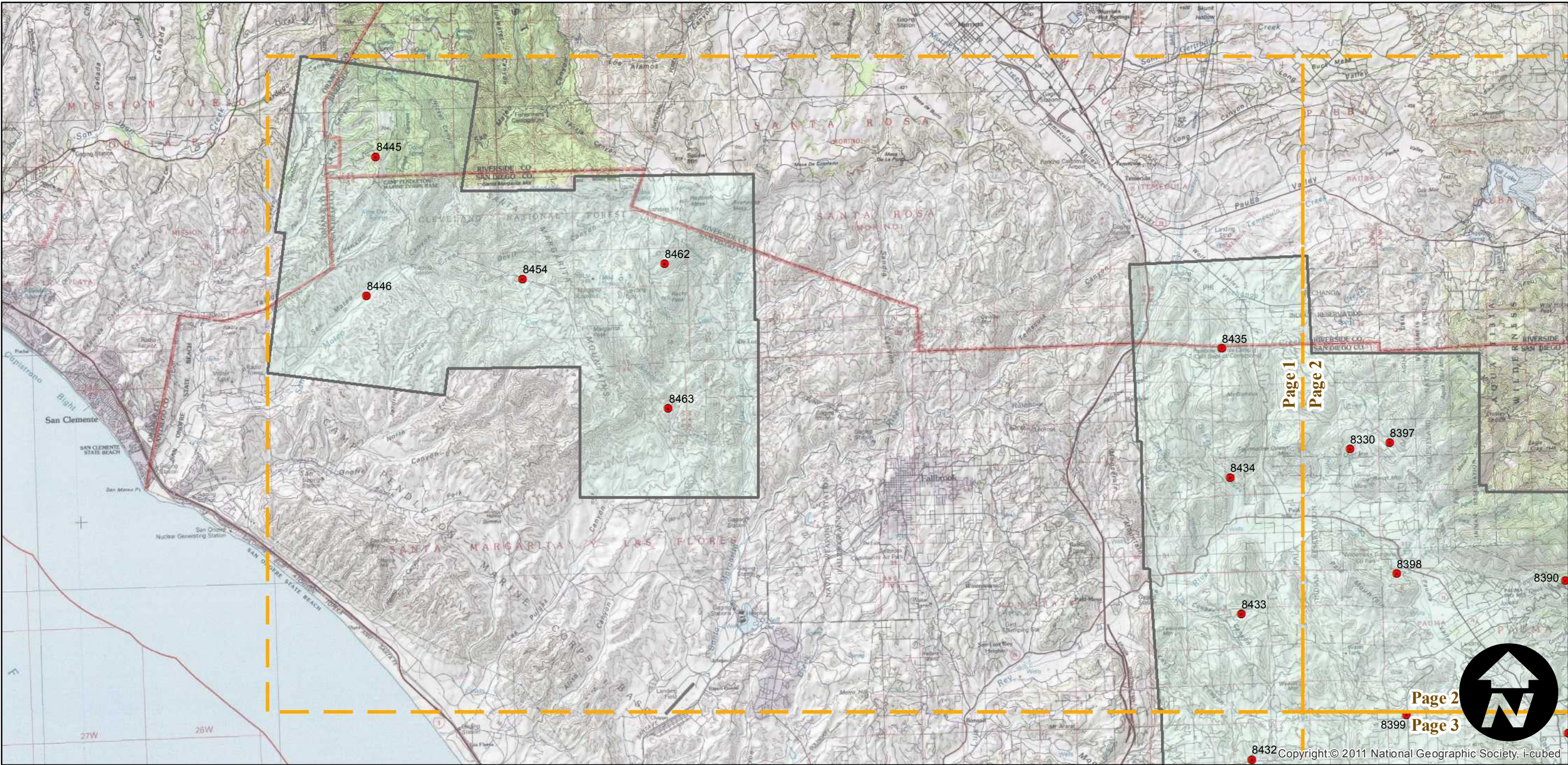
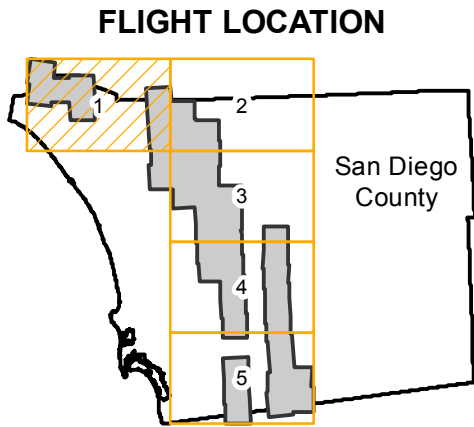


Copyright:© 2011 National Geographic Society, i-cubed

AMI-SD-76 (1:34K)

Counties: San Diego
Flight date(s): 10-27-1976 to 11-02-1976
Scale: 1:34,000
Overlap: 20%

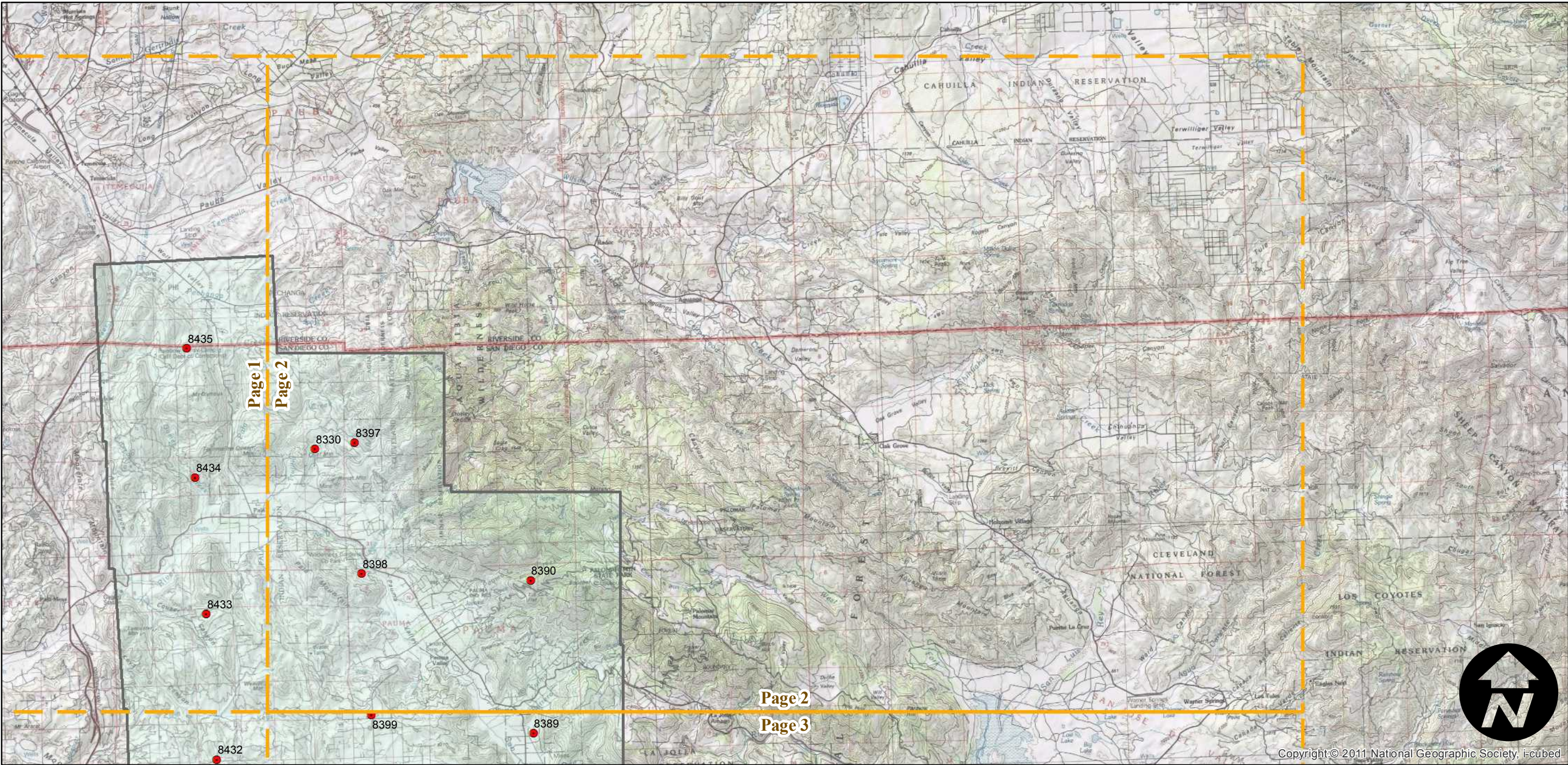
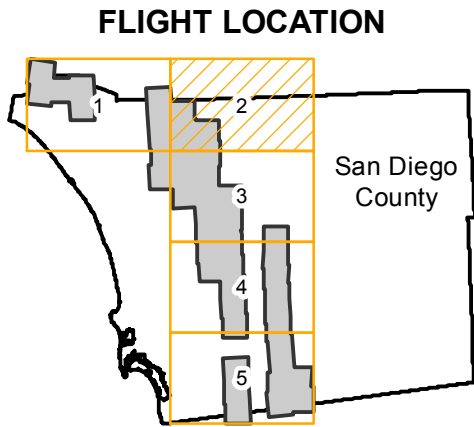
Complete Metadata:
<http://www.library.ucsb.edu/mil/aerial-photography-tools>



AMI-SD-76 (1:34K)

Counties: San Diego
Flight date(s): 10-27-1976 to 11-02-1976
Scale: 1:34,000
Overlap: 20%

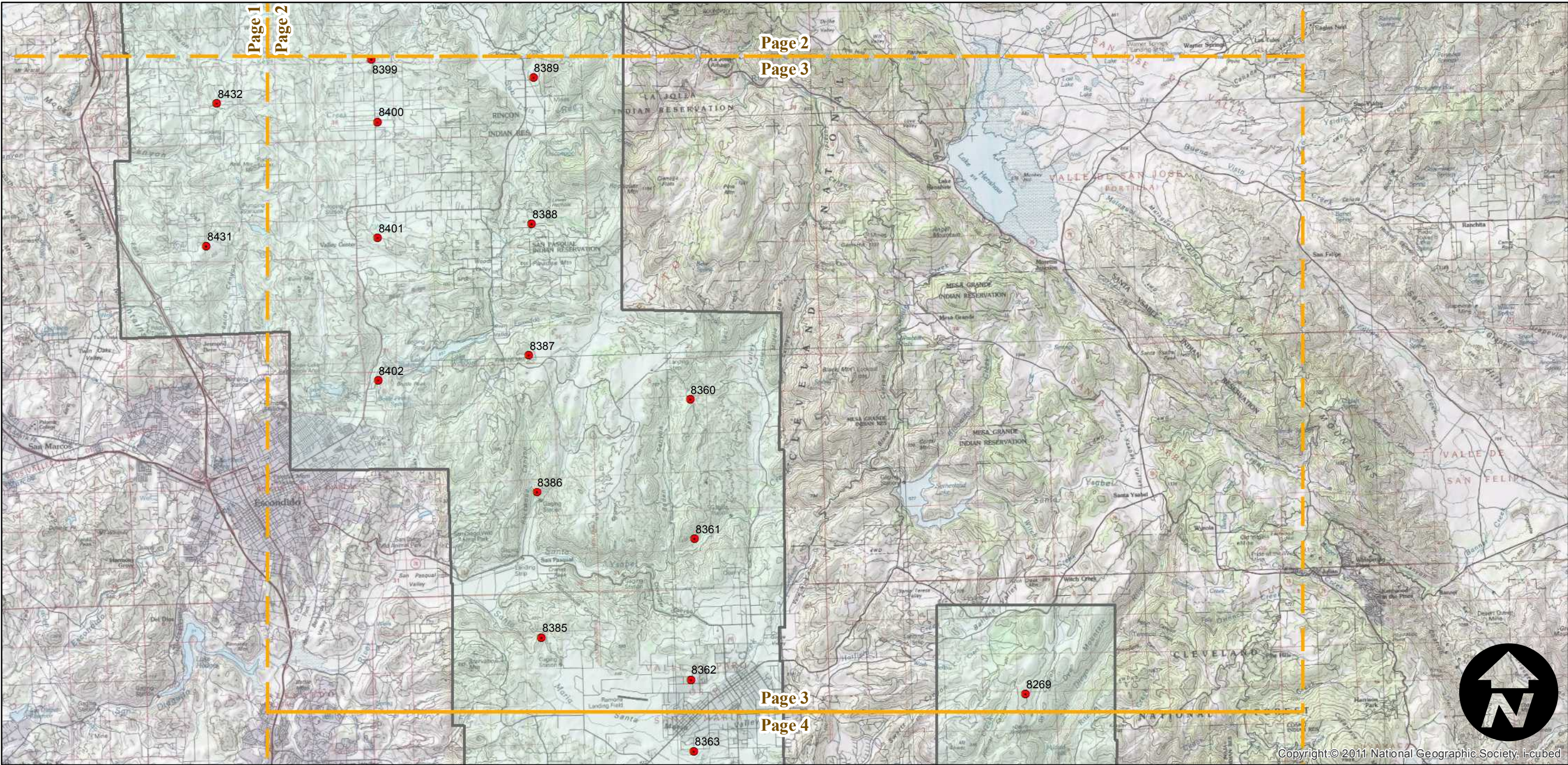
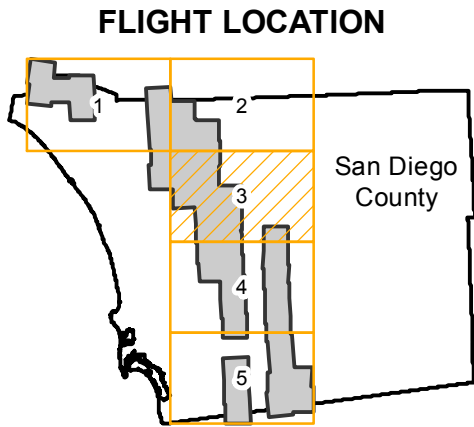
Complete Metadata:
<http://www.library.ucsb.edu/mil/aerial-photography-tools>



AMI-SD-76 (1:34K)

Counties: San Diego
Flight date(s): 10-27-1976 to 11-02-1976
Scale: 1:34,000
Overlap: 20%

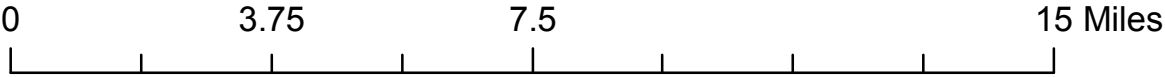
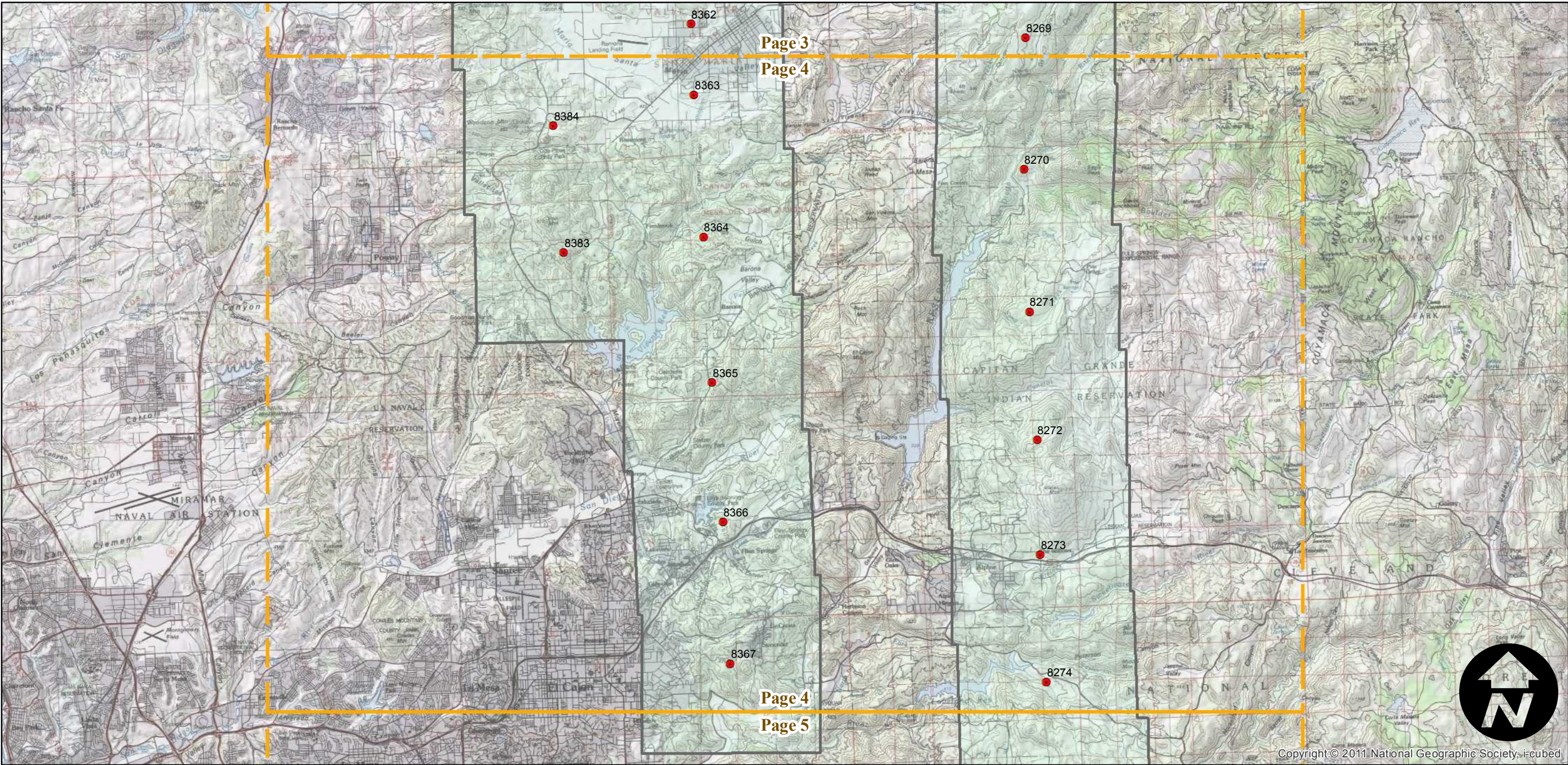
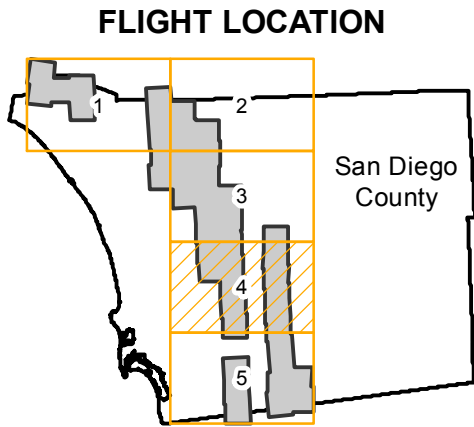
Complete Metadata:
<http://www.library.ucsb.edu/mil/aerial-photography-tools>



AMI-SD-76 (1:34K)

Counties: San Diego
Flight date(s): 10-27-1976 to 11-02-1976
Scale: 1:34,000
Overlap: 20%

Complete Metadata:
<http://www.library.ucsb.edu/mil/aerial-photography-tools>



AMI-SD-76 (1:34K)

Counties: San Diego
Flight date(s): 10-27-1976 to 11-02-1976
Scale: 1:34,000
Overlap: 20%

Complete Metadata:
<http://www.library.ucsb.edu/mil/aerial-photography-tools>

