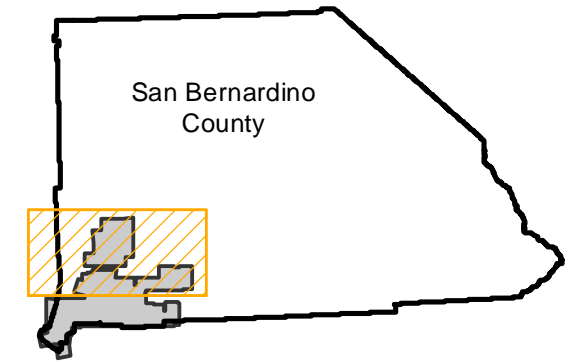


AMI-SBD-80

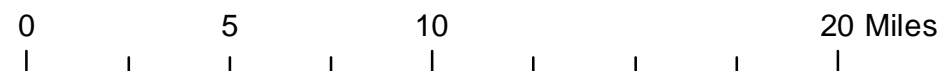
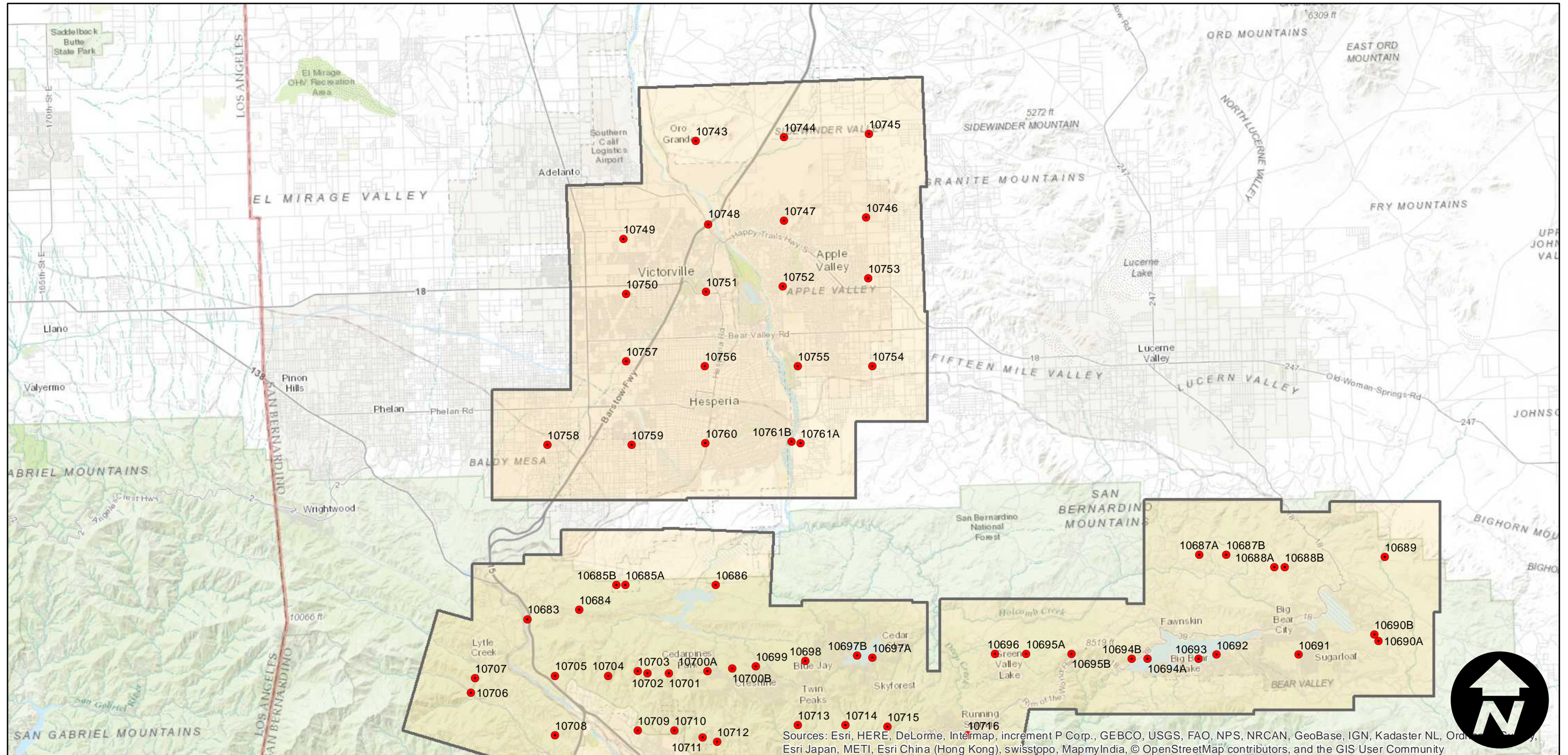
Counties: San Bernardino
 Flight date(s): 06-07-1980 to 07-21-1980
 Scale: 1:36,000
 Overlap: 20%

Note: Southwest San Bernardino County from Chino Hills to Big Bear City. Areas covered include Ontario, Colton, Cajon Pass, and Highland. San Bernardino high desert covering Victorville, Hesperia, and Apple Valley.

FLIGHT LOCATION



Complete Metadata:
<http://www.library.ucsb.edu/mil/aerial-photography-tools>



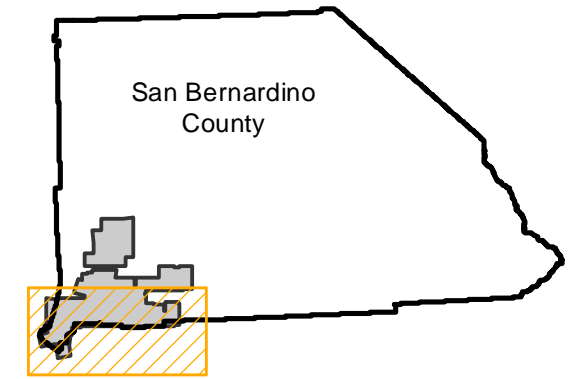
Sources: Esri, HERE, DeLorme, Intermap, increment P Corp., GEBCO, USGS, FAO, NPS, NRCAN, GeoBase, IGN, Kadaster NL, Ordnance Survey, Esri Japan, METI, Esri China (Hong Kong), swisstopo, MapmyIndia, © OpenStreetMap contributors, and the GIS User Community

AMI-SBD-80

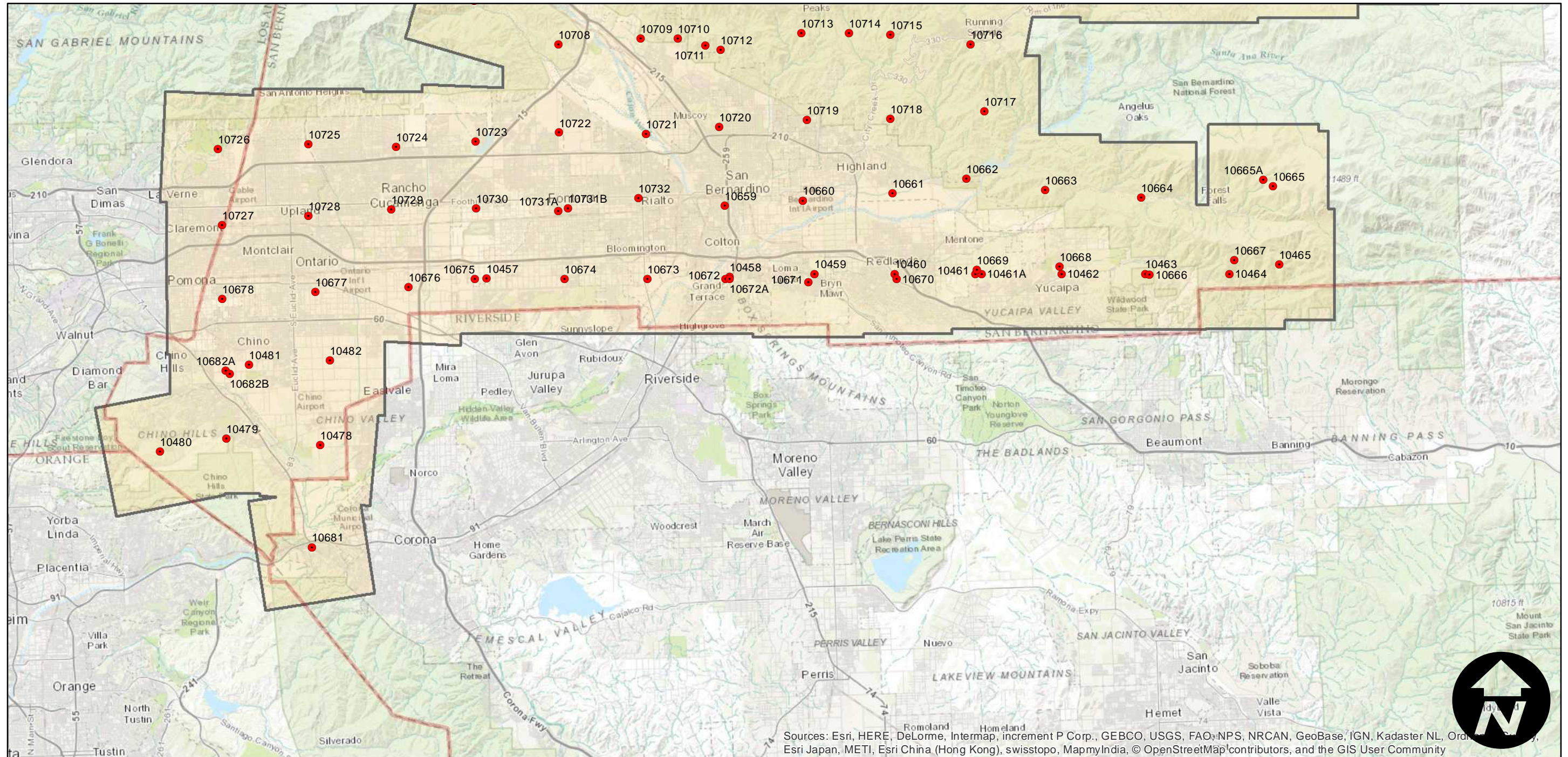
Counties: San Bernardino
Flight date(s): 06-07-1980 to 07-21-1980
Scale: 1:36,000
Overlap: 20%

Note: Southwest San Bernardino County from Chino Hills to Big Bear City. Areas covered include Ontario, Colton, Cajon Pass, and Highland. San Bernardino high desert covering Victorville, Hesperia, and Apple Valley.

FLIGHT LOCATION



Complete Metadata:
<http://www.library.ucsb.edu/mil/aerial-photography-tools>



Sources: Esri, HERE, DeLorme, Intermap, increment P Corp., GEBCO, USGS, FAO, NPS, NRCAN, GeoBase, IGN, Kadaster NL, Ordnance Survey, Esri Japan, METI, Esri China (Hong Kong), swisstopo, MapmyIndia, © OpenStreetMap contributors, and the GIS User Community

