

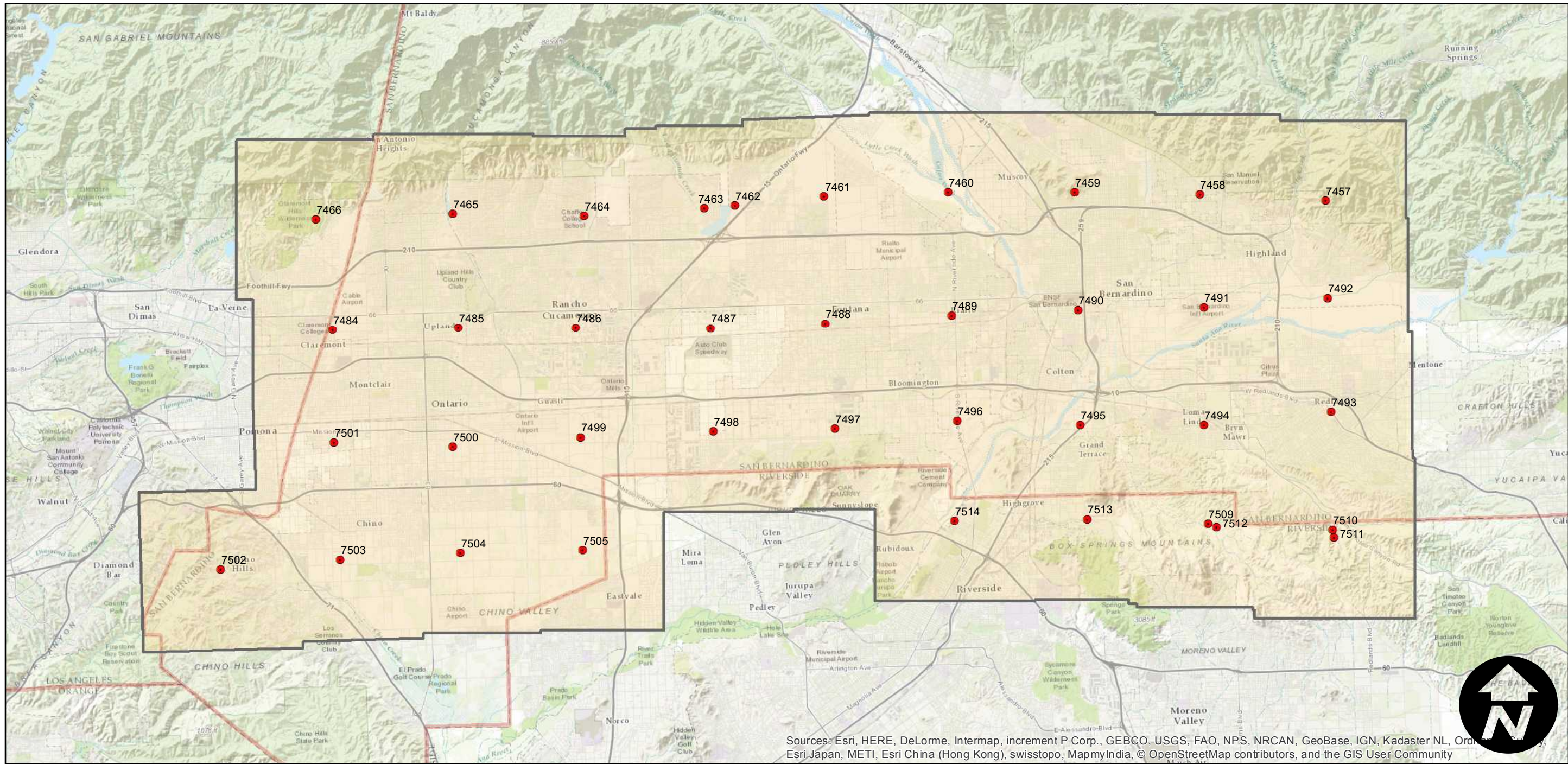
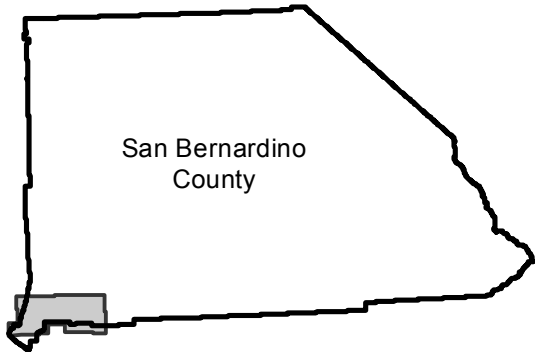
# AMI-SBD-75 (1:36K)

Counties: San Bernardino  
Flight date(s): 05-05-1975 to 05-07-1975  
Scale: 1:36,000  
Overlap: 20%

Complete Metadata:  
<http://www.library.ucsb.edu/mil/aerial-photography-tools>

Note: Chino Hills to Highland. Areas covered include Ontario, Colton, and Redlands. Frame 7456 shot at a scale of 1:25,000 near Claremont.

## FLIGHT LOCATION



0 4 8 16 Miles

Index to Aerial Photography  
Page 1 of 1

Scale of this index: 1:200,000

Sources: Esri, HERE, DeLorme, Intermap, increment P Corp., GEBCO, USGS, FAO, NPS, NRCAN, GeoBase, IGN, Kadaster NL, Ordnance Survey, Esri Japan, METI, Esri China (Hong Kong), swisstopo, MapmyIndia, © OpenStreetMap contributors, and the GIS User Community