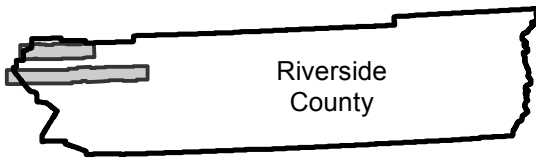


AMI-RIV-70

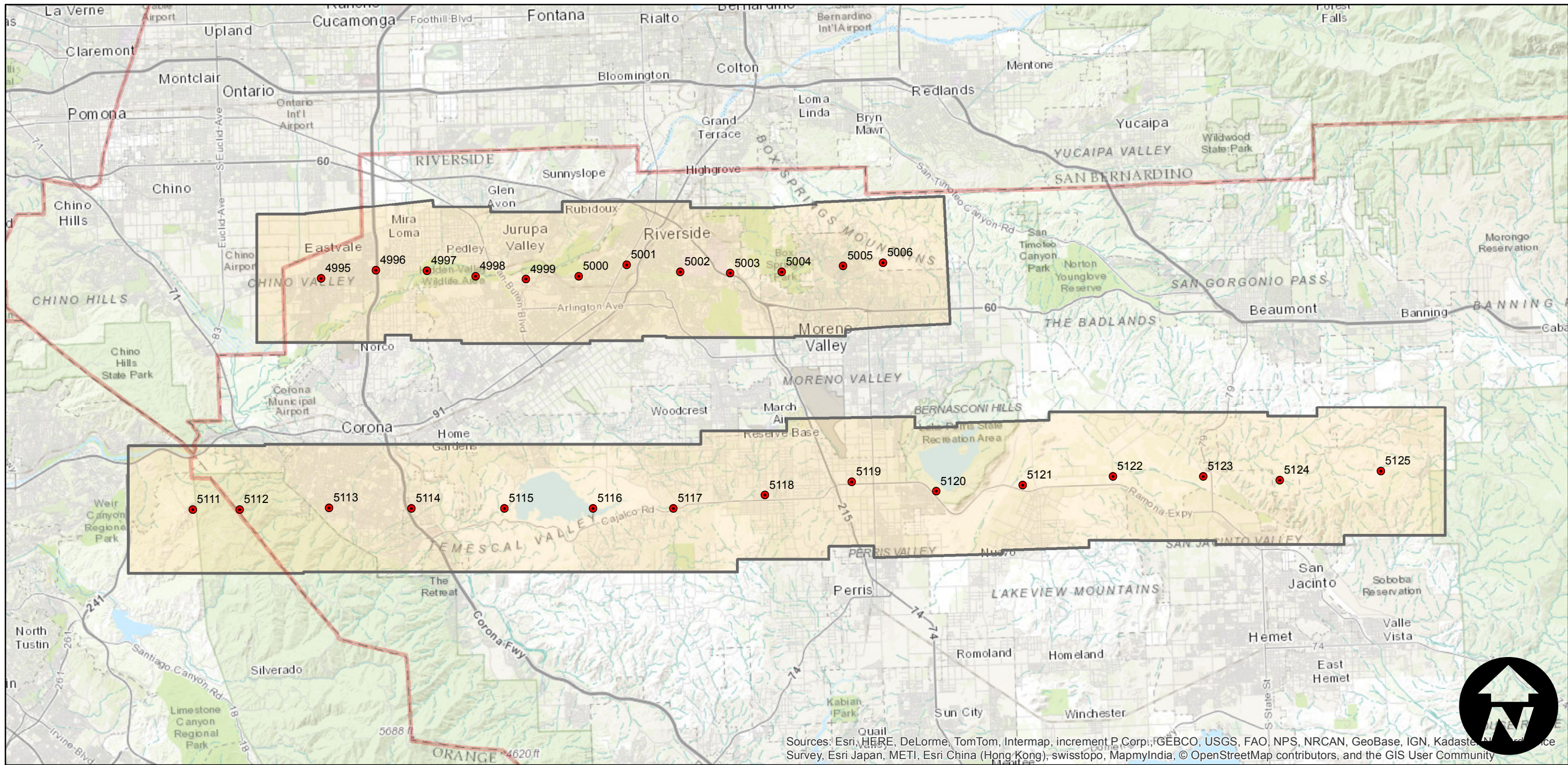
Counties: Riverside
Flight date(s): 01-02-1970 to 01-30-1970
Scale: 1:36,000
Overlap: 20-60%

Note: Santa Ana Mountains to San Jacinto Badlands;
Eastvale to Moreno Valley. Areas covered include
Riverside, Lake Matthews and Lake Perris.

FLIGHT LOCATION



Complete Metadata:
<http://www.library.ucsb.edu/mil/aerial-photography-tools>



0 5 10 20 Miles

Index to Aerial Photography
Page 1 of 1

Scale of this index: 1:250,000