

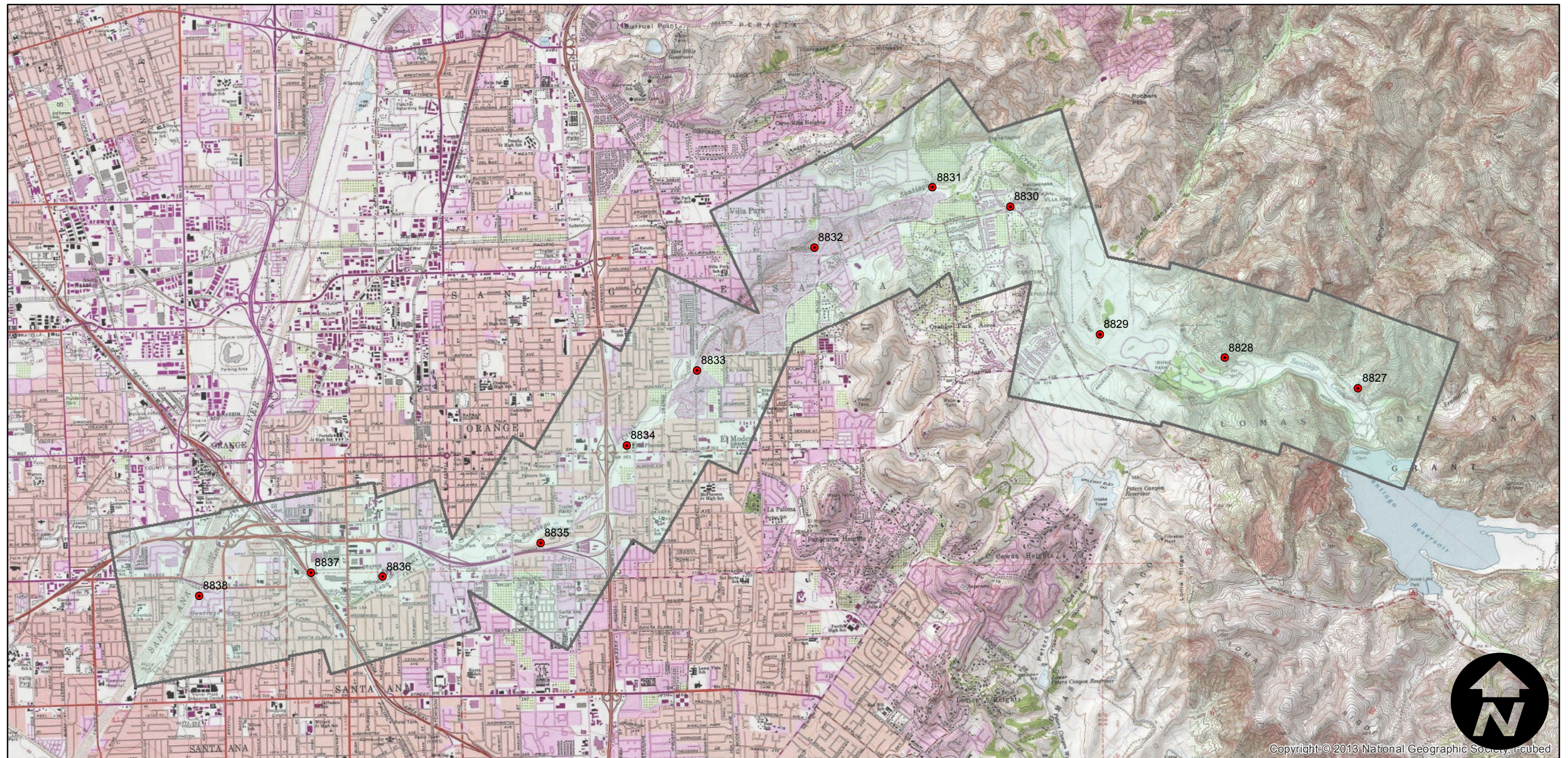
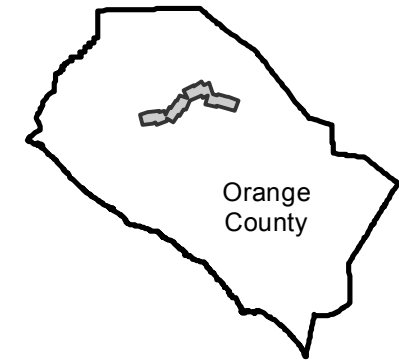
# AMI-OC-78A

Counties: Orange  
Flight date(s): 01-07-1978  
Scale: 1:8,400  
Overlap: 10%

Complete Metadata:  
<http://www.library.ucsb.edu/mil/aerial-photography-tools>

Note: Santiago Creek from Irvine Park to Santa Ana River.

## FLIGHT LOCATION



A horizontal scale bar with tick marks at 0, 1, 2, and 4 miles. The bar is divided into segments by vertical lines. The segments between 0 and 1, 1 and 2, and 2 and 4 are each divided into four smaller segments by shorter vertical lines, indicating a scale where each small segment represents 0.25 miles.

Index to Aerial Photography  
Page 1 of 1

Scale of this index: 1:52,500