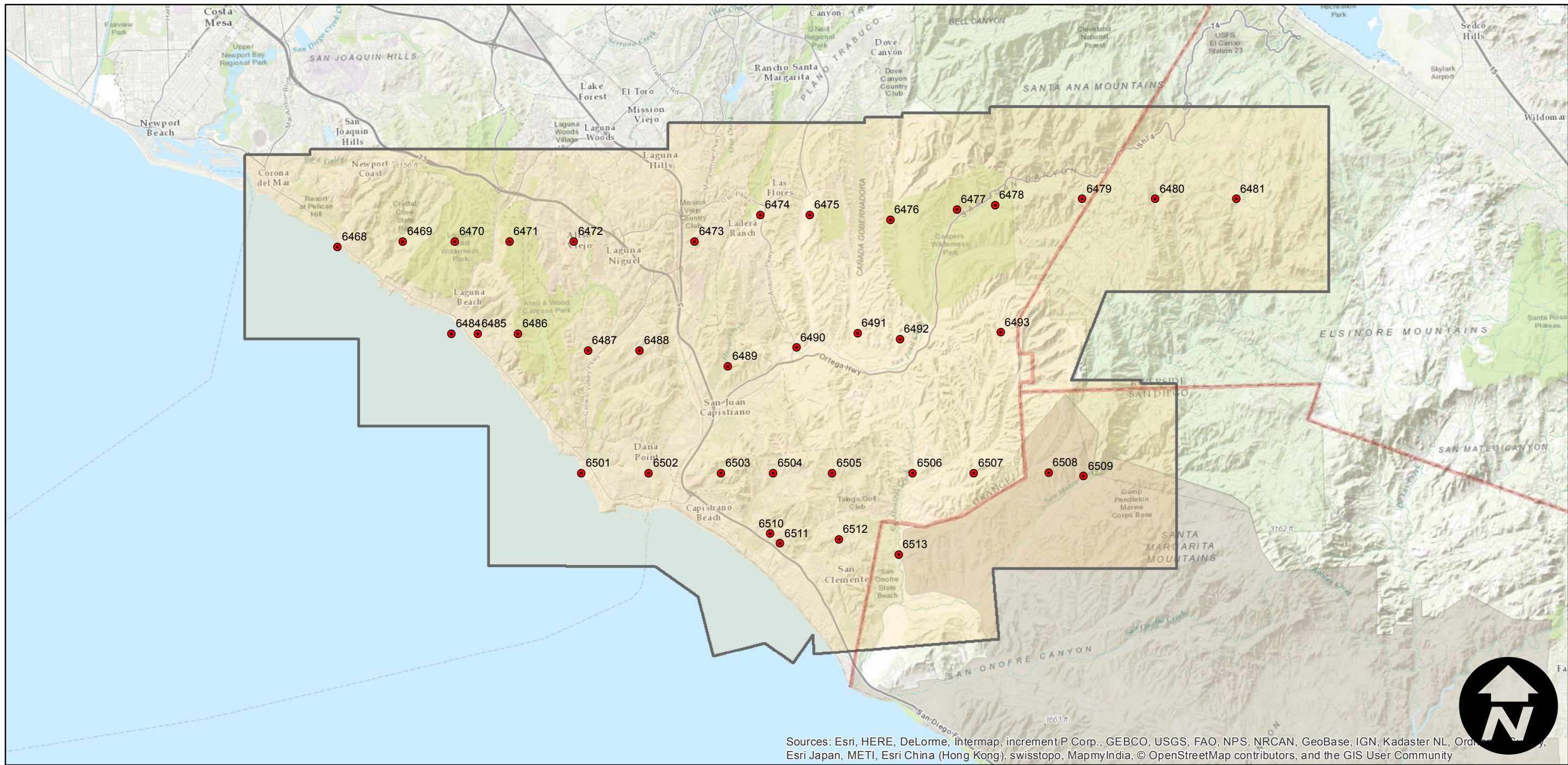
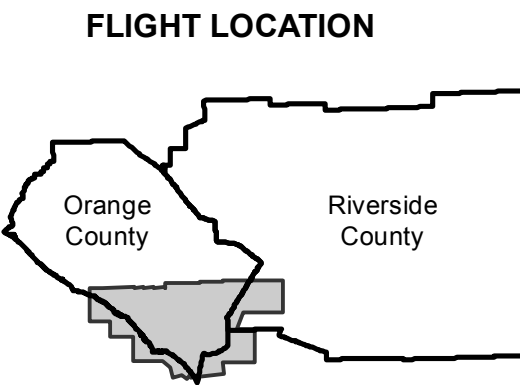


AMI-OC-73

Counties: Orange, Riverside
Flight date(s): 01-19-1973
Scale: 1:36,000
Overlap: 10-60%

Complete Metadata:
<http://www.library.ucsb.edu/mil/aerial-photography-tools>

Note: Orange County South of Mission Viejo. Areas covered include Lacuna Beach, San Juan Capistrano, Dana Point, and San Clemente. Coverage extends into Riverside County.



0 2 4 8 Miles

Index to Aerial Photography
Page 1 of 1

Scale of this index: 1:185,000

Sources: Esri, HERE, DeLorme, Intermap, increment P Corp., GEBCO, USGS, FAO, NPS, NRCAN, GeoBase, IGN, Kadaster NL, Ordnance Survey, Esri Japan, METI, Esri China (Hong Kong), swisstopo, MapmyIndia, © OpenStreetMap contributors, and the GIS User Community