

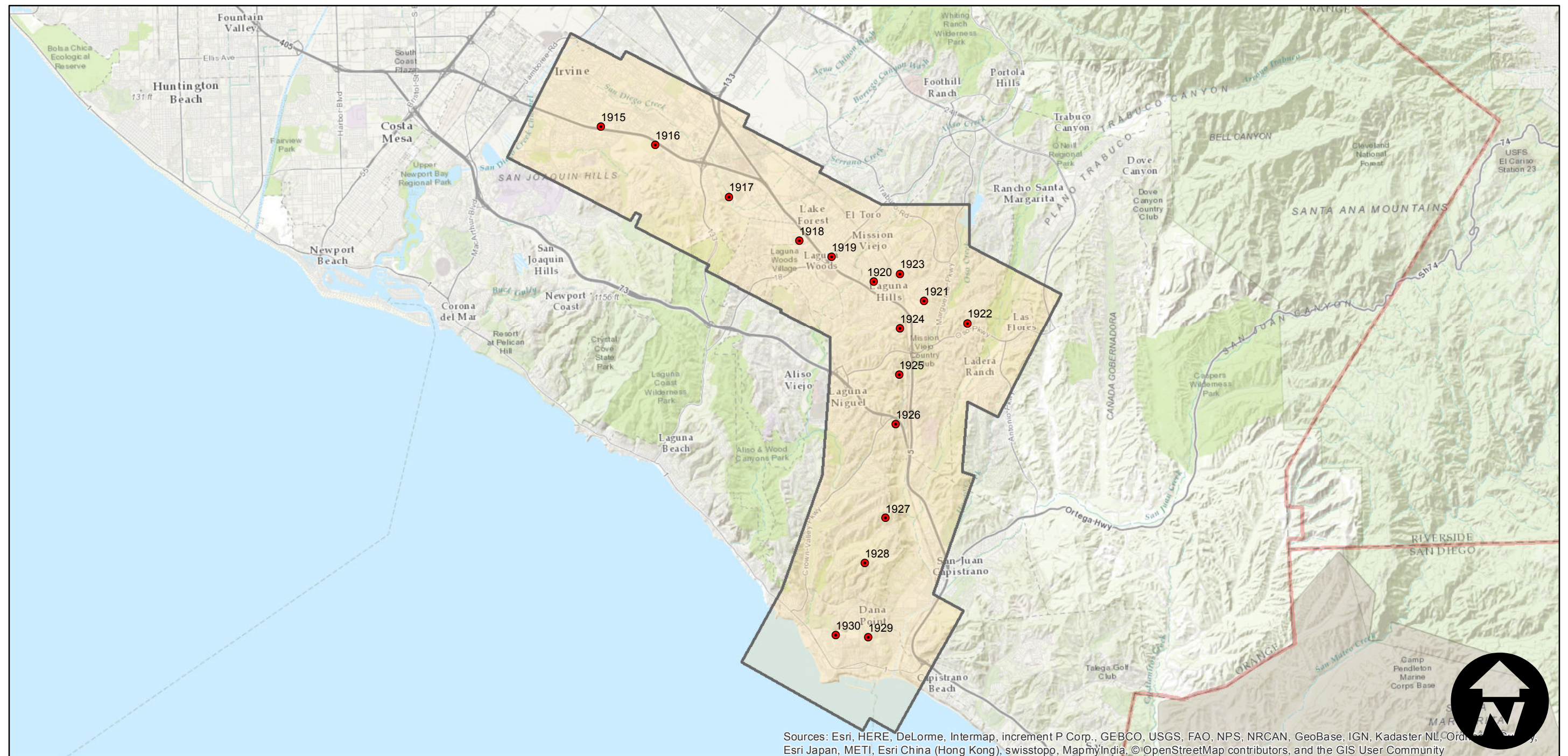
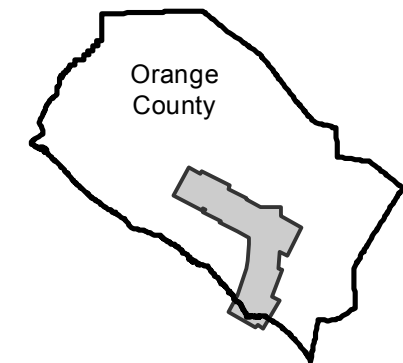
# AMI-OC-67E

Counties: Orange  
Flight date(s): 12-22-1967  
Scale: 1:24,000  
Overlap: 30-50%

Complete Metadata:  
<http://www.library.ucsb.edu/mil/aerial-photography-tools>

Note: I-405 and I-5 freeways from Irvine to Dana Point. Areas covered include Laguna Hills, Mission Viejo, and Laguna Niguel.

## FLIGHT LOCATION



Sources: Esri, HERE, DeLorme, Intermap, increment P Corp., GEBCO, USGS, FAO, NPS, NRCAN, GeoBase, IGN, Kadaster NL, Ordnance Survey, Esri Japan, METI, Esri China (Hong Kong), swisstopo, MapmyIndia, © OpenStreetMap contributors, and the GIS User Community

0 3 6 12 Miles

Index to Aerial Photography  
Page 1 of 1

Scale of this index: 1:165,000