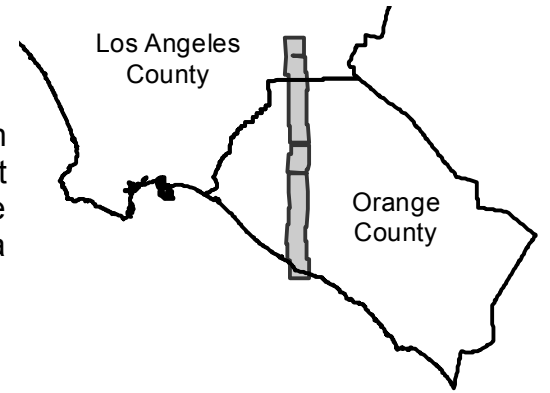


# AMI-OC-67B

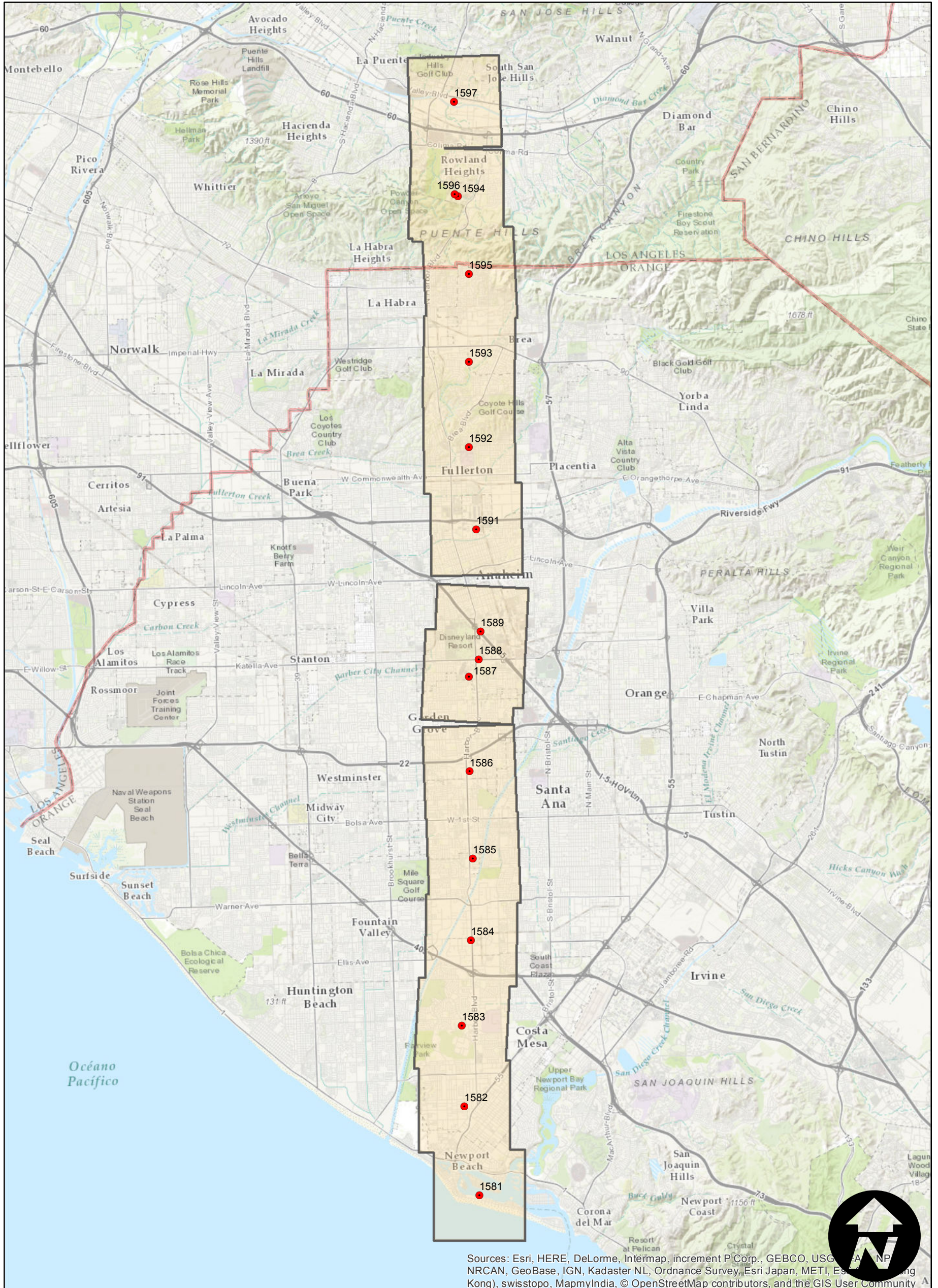
Counties: Orange, Los Angeles  
 Flight date(s): 05-18-1967  
 Scale: 1:16,000  
 Overlap: 10%

Note: Harbor Blvd. from Rowland Heights to Newport Beach. Areas covered include Fullerton, Anaheim, and Costa Mesa.

## FLIGHT LOCATION



Complete Metadata:  
<http://www.library.ucsb.edu/mil/aerial-photography-tools>



Sources: Esri, HERE, DeLorme, Intermap, increment P Corp., GEBCO, USGS, FAO, NPS, NRCAN, GeoBase, IGN, Kadaster NL, Ordnance Survey, Esri Japan, METI, Esri (China), Swisstopo, MapmyIndia, © OpenStreetMap contributors, and the GIS User Community

0 1.5 3 6 Miles

Index to Aerial Photography  
 Page 1 of 1

Scale of this index: 1:155,000

