

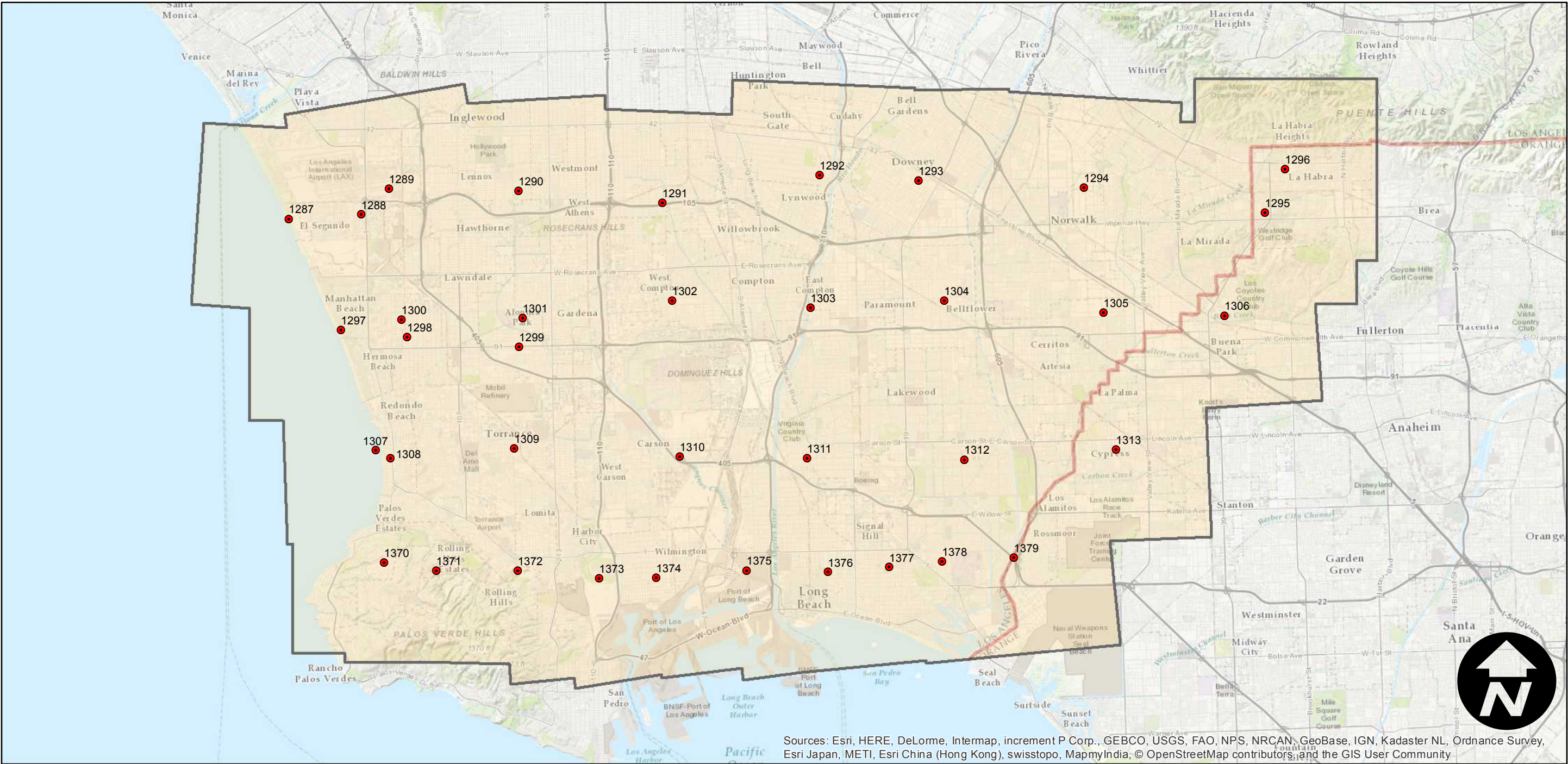
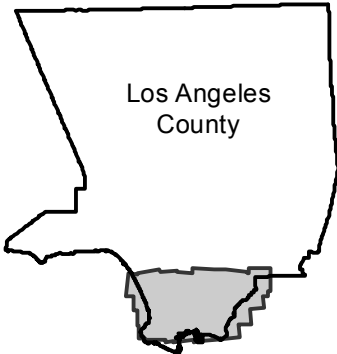
AMI-LA-67F

Counties: Los Angeles
Flight date(s): 01-03-1967 to 02-17-1967
Scale: 1:36,000
Overlap: 20-60%

Complete Metadata:
<http://www.library.ucsb.edu/mil/aerial-photography-tools>

Note: Southern tip of Los Angeles County. La Habra to Palos Verde Hills. Areas covered include Norwalk, Carson, Long Beach, Hawthorne, and Redondo Beach.

FLIGHT LOCATION



Sources: Esri, HERE, DeLorme, Intermap, increment P Corp., GEBCO, USGS, FAO, NPS, NRCAN, GeoBase, IGN, Kadaster NL, Ordnance Survey, Esri Japan, METI, Esri China (Hong Kong), swisstopo, MapmyIndia, © OpenStreetMap contributors, and the GIS User Community

0 3 6 12 Miles

Index to Aerial Photography
Page 1 of 1

Scale of this index: 1:180,000