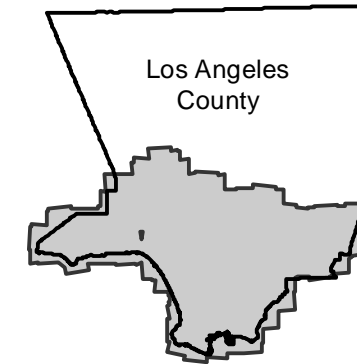


# AMI-LA-65

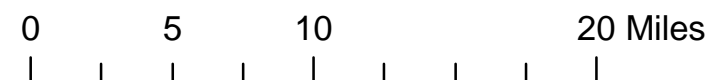
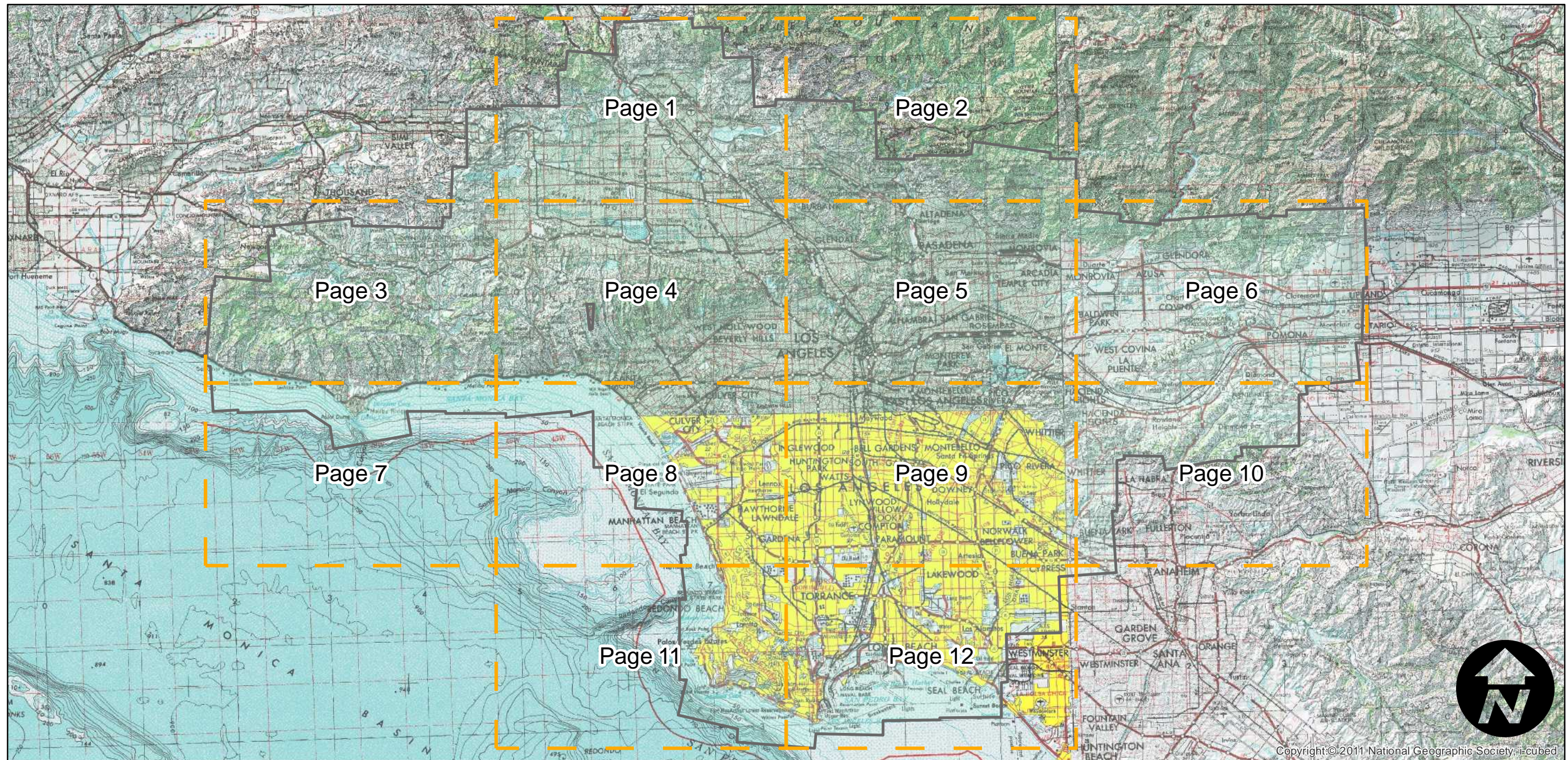
Counties: Los Angeles  
Flight date(s): 01-01-1965 to 02-28-1966  
Scale: 1:36,000  
Overlap: 0%

Note: for oversize paper prints see:  
Ref G 1528 L6 A4 1969

## FLIGHT LOCATION



Complete Metadata:  
<http://www.library.ucsb.edu/mil/aerial-photography-tools>



Index to Aerial Photography  
Page Key

Scale of this index: 1:430,000

Copyright © 2011 National Geographic Society. i-cubed

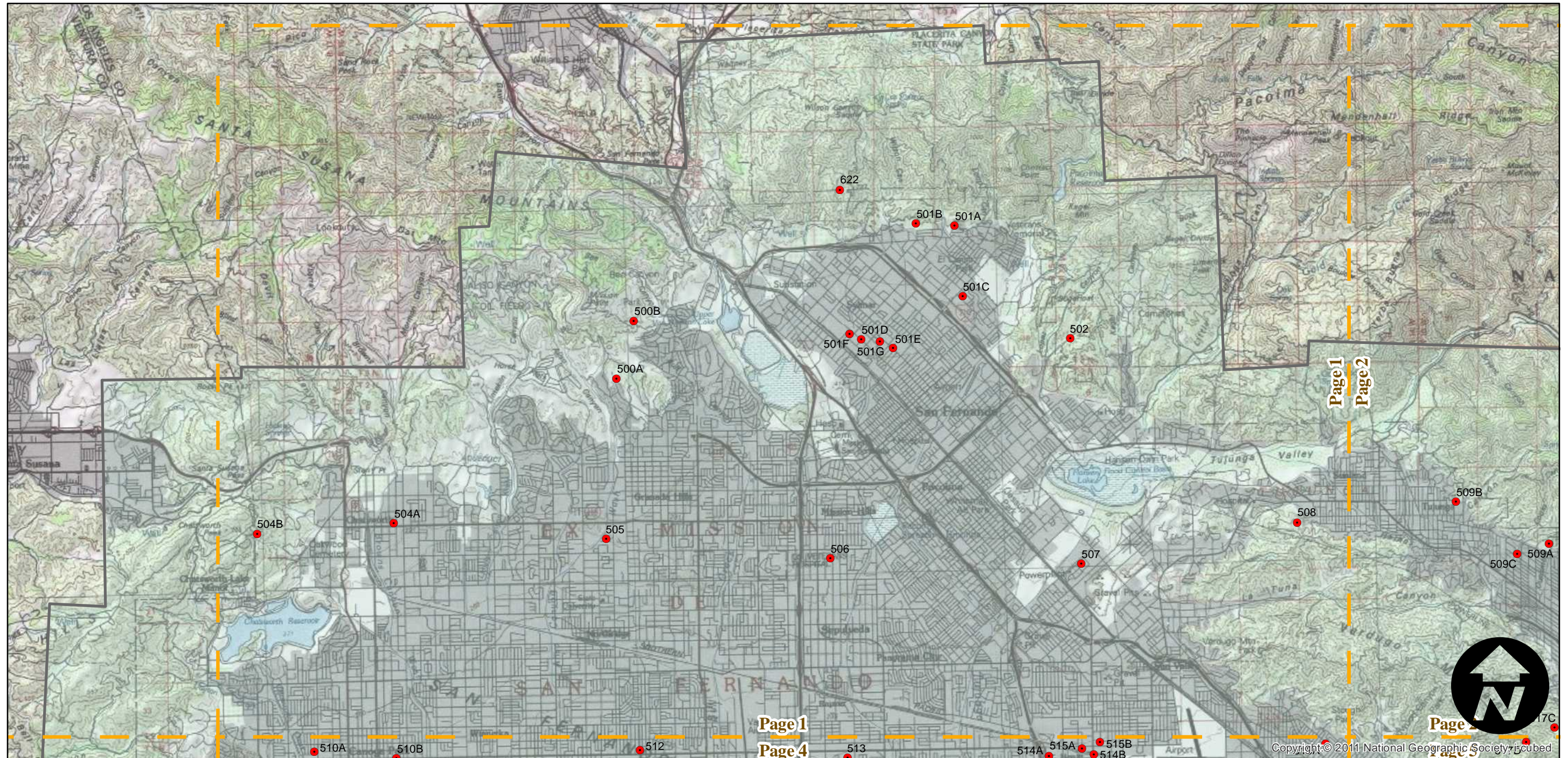
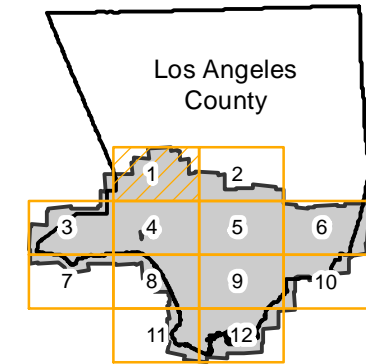
# AMI-LA-65

Counties: Los Angeles  
Flight date(s): 01-01-1965 to 02-28-1966  
Scale: 1: 36,000  
Overlap: 0%

Complete Metadata:  
<http://www.library.ucsb.edu/mil/aerial-photography-tools>

Note: for oversize paper prints see:  
Ref G 1528 L6 A4 1969

## FLIGHT LOCATION



0 2 4 8 Miles

Index to Aerial Photography  
Page 1 of 12

Scale of this index: 1:110,000

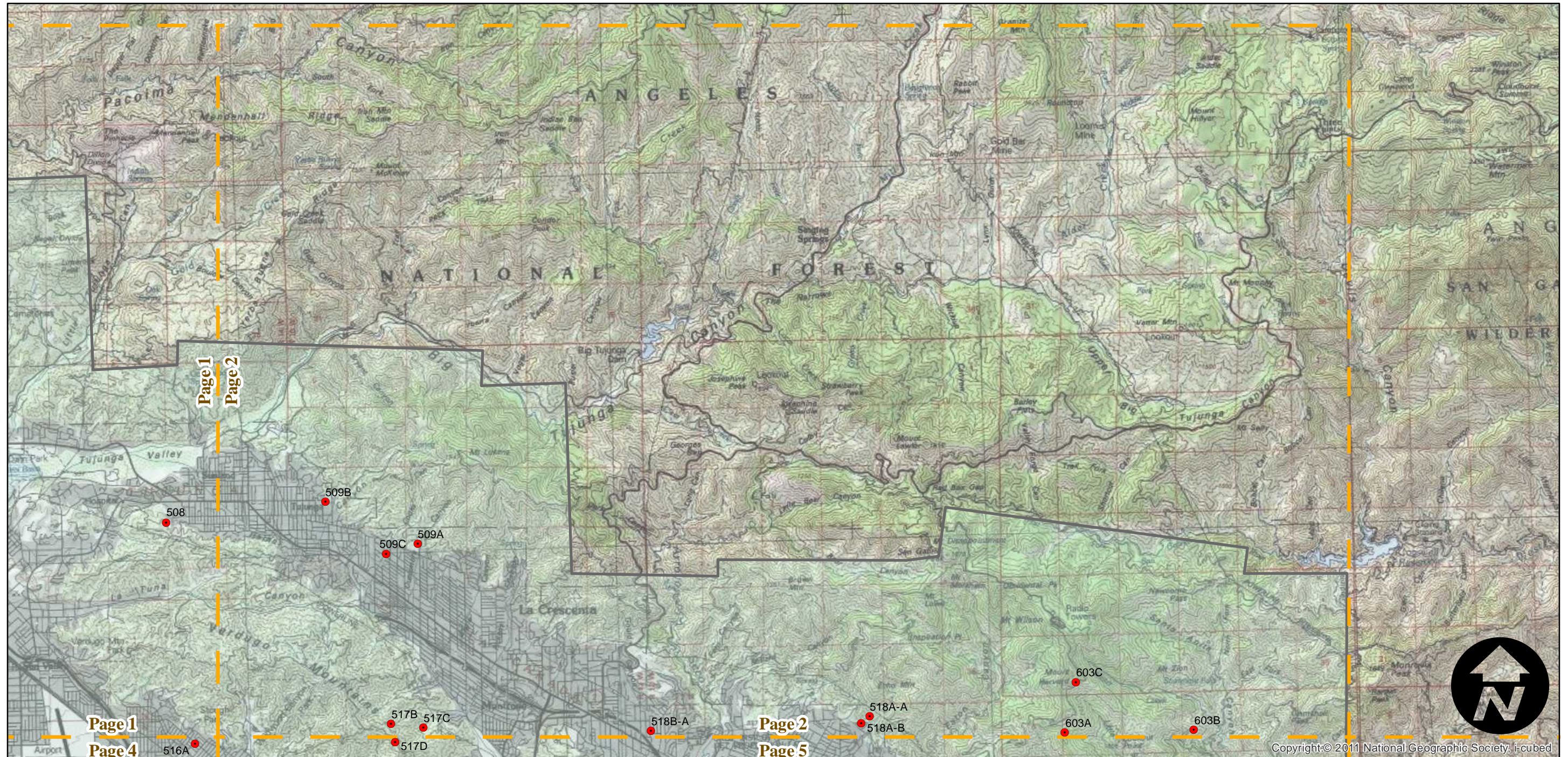
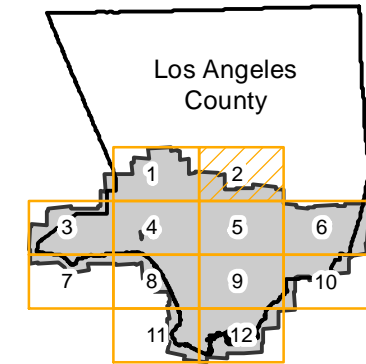
# AMI-LA-65

Counties: Los Angeles  
Flight date(s): 01-01-1965 to 02-28-1966  
Scale: 1: 36,000  
Overlap: 0%

Note: for oversize paper prints see:  
Ref G 1528 L6 A4 1969

Complete Metadata:  
<http://www.library.ucsb.edu/mil/aerial-photography-tools>

## FLIGHT LOCATION



0 2 4 8 Miles

Index to Aerial Photography  
Page 2 of 12

Scale of this index: 1:110,000

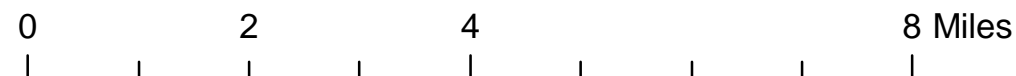
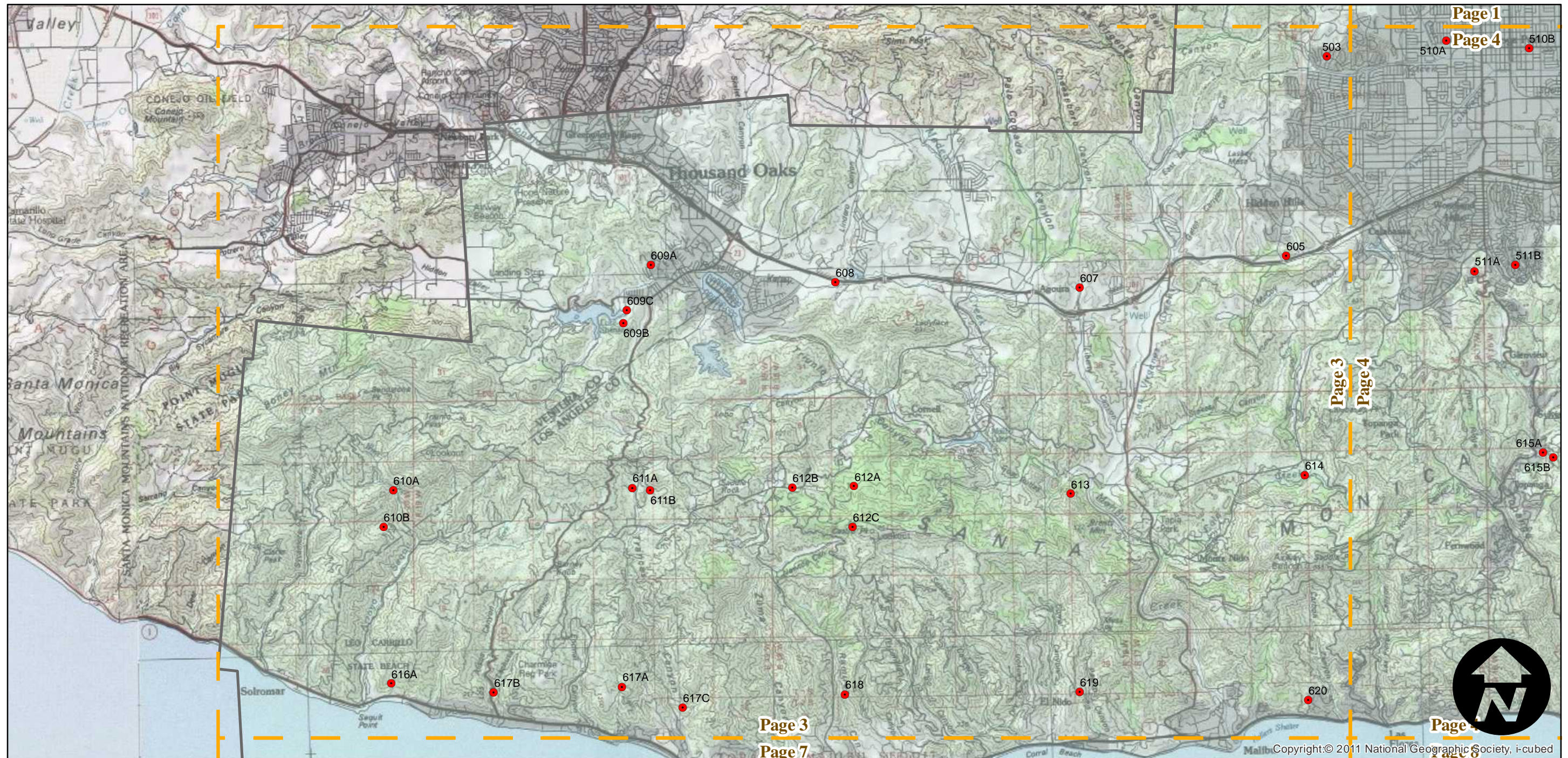
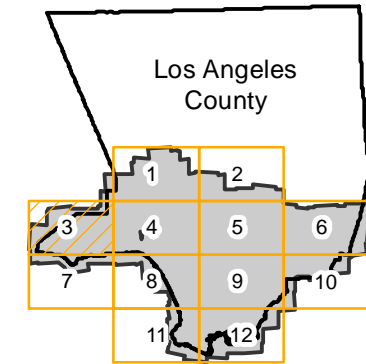
# AMI-LA-65

Counties: Los Angeles  
Flight date(s): 01-01-1965 to 02-28-1966  
Scale: 1: 36,000  
Overlap: 0%

Note: for oversize paper prints see:  
Ref G 1528 L6 A4 1969

Complete Metadata:  
<http://www.library.ucsb.edu/mil/aerial-photography-tools>

## FLIGHT LOCATION



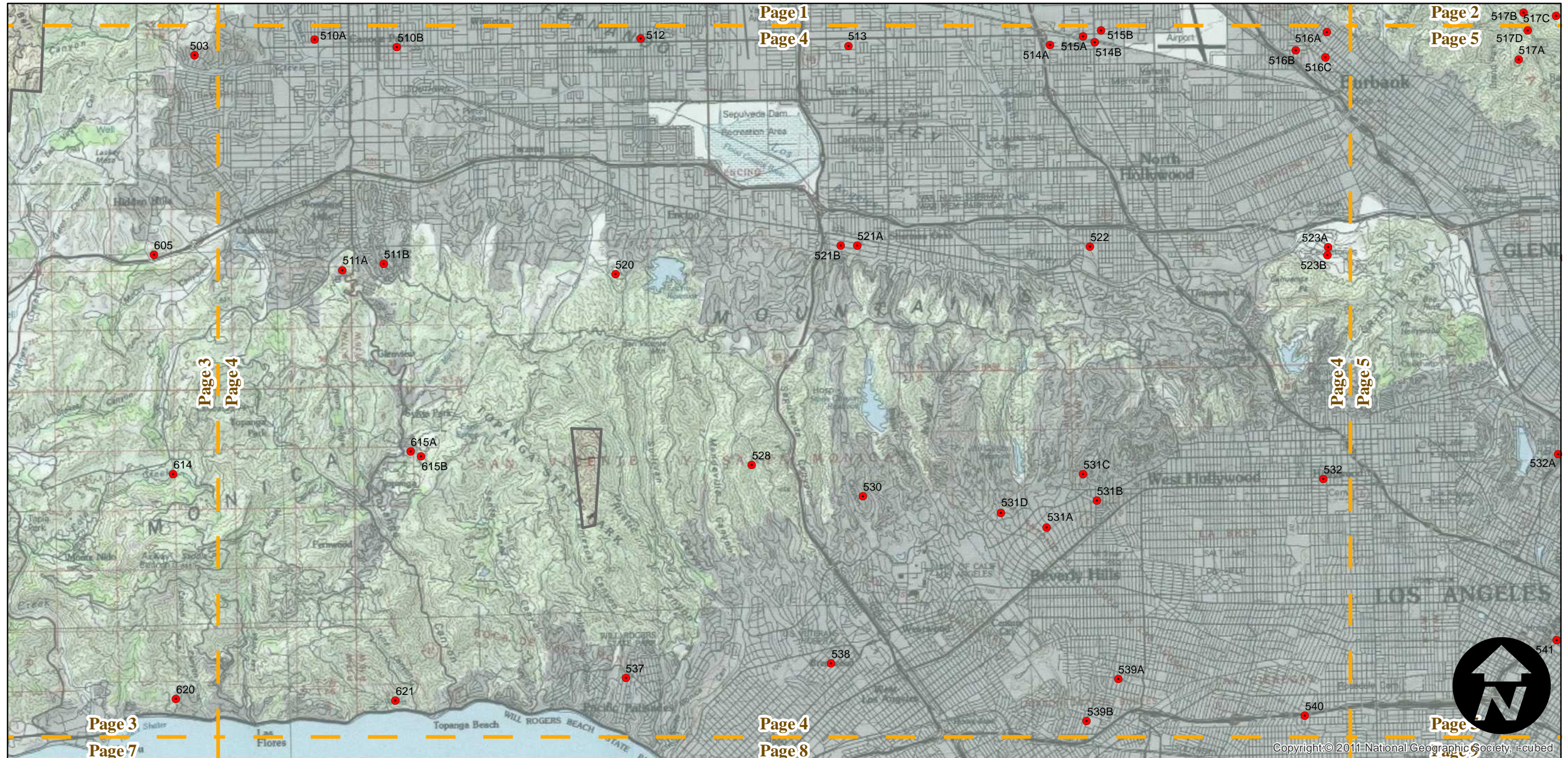
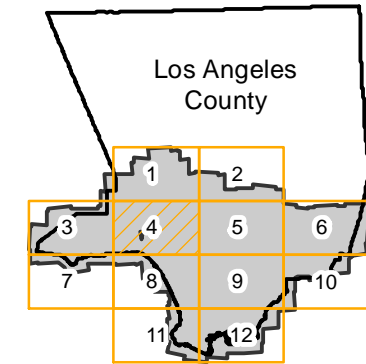
# AMI-LA-65

Counties: Los Angeles  
Flight date(s): 01-01-1965 to 02-28-1966  
Scale: 1:36,000  
Overlap: 0%

Complete Metadata:  
<http://www.library.ucsb.edu/mil/aerial-photography-tools>

Note: for oversize paper prints see:  
Ref G 1528 L6 A4 1969

## FLIGHT LOCATION



Copyright: © 2011 National Geographic Society, i-cubed

0 2 4 8 Miles

Index to Aerial Photography  
Page 4 of 12

Scale of this index: 1:110,000

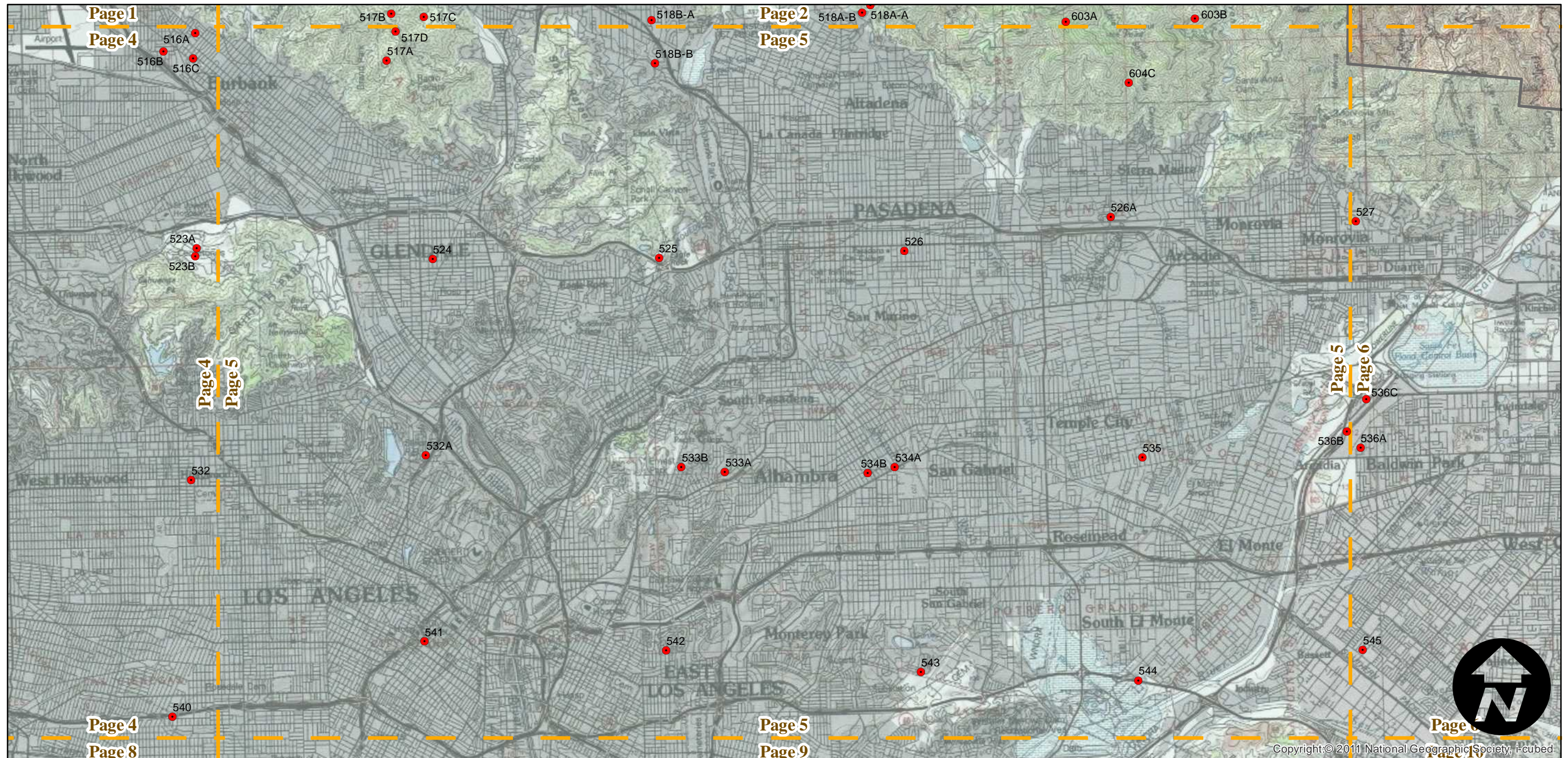
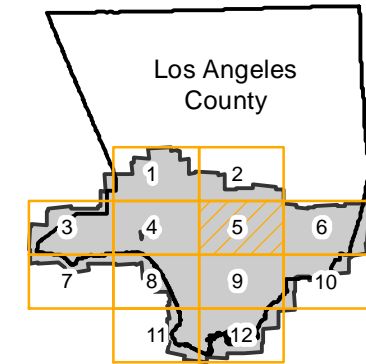
# AMI-LA-65

Counties: Los Angeles  
Flight date(s): 01-01-1965 to 02-28-1966  
Scale: 1:36,000  
Overlap: 0%

Note: for oversize paper prints see:  
Ref G 1528 L6 A4 1969

Complete Metadata:  
<http://www.library.ucsb.edu/mil/aerial-photography-tools>

## FLIGHT LOCATION



0 2 4 8 Miles

Index to Aerial Photography  
Page 5 of 12

Scale of this index: 1:110,000

Copyright: © 2011 National Geographic Society, i-cubed

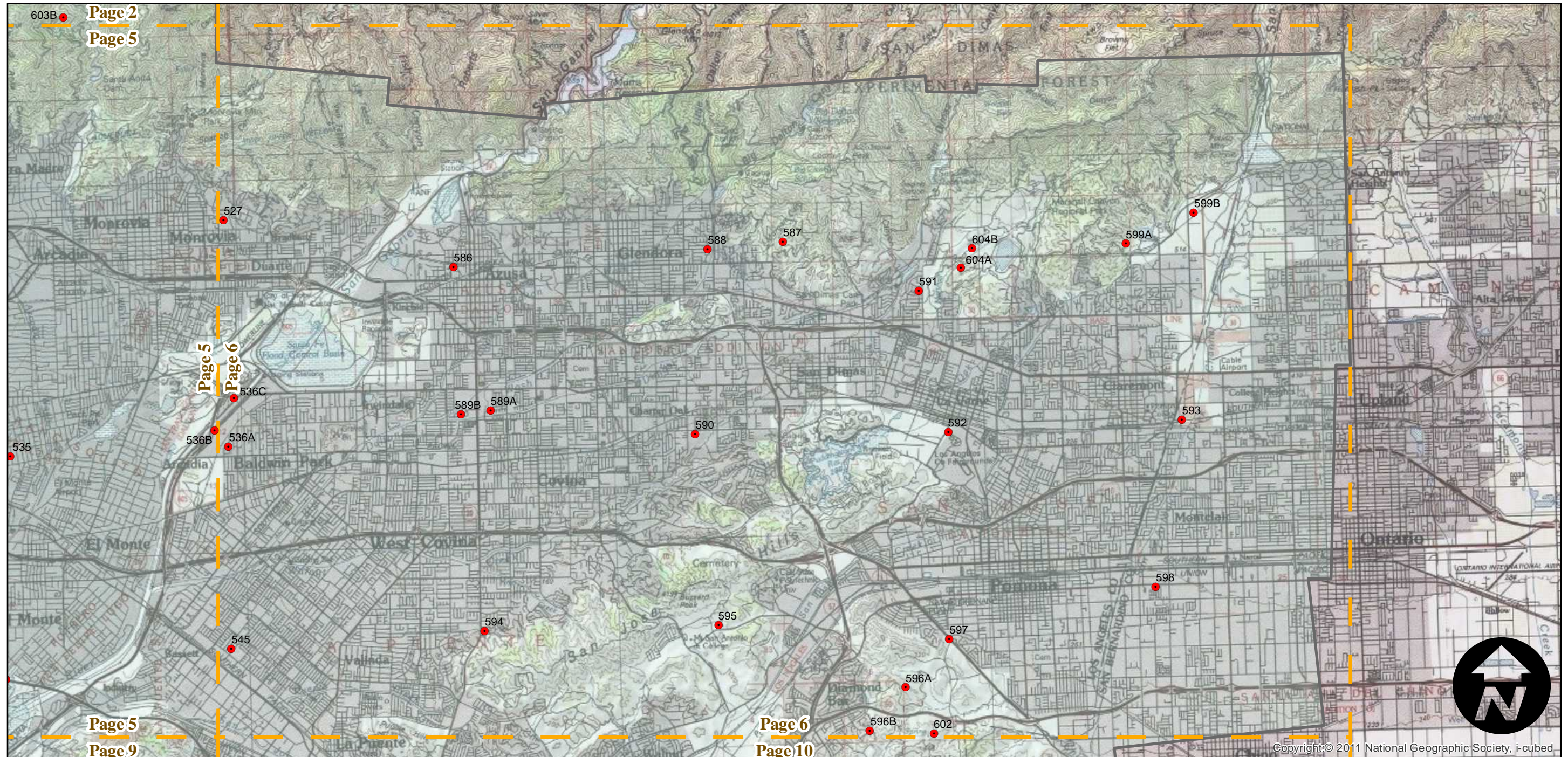
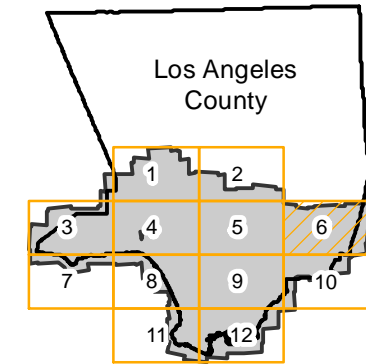
# AMI-LA-65

Counties: Los Angeles  
Flight date(s): 01-01-1965 to 02-28-1966  
Scale: 1: 36,000  
Overlap: 0%

Note: for oversize paper prints see:  
Ref G 1528 L6 A4 1969

Complete Metadata:  
<http://www.library.ucsb.edu/mil/aerial-photography-tools>

## FLIGHT LOCATION



0 2 4 8 Miles

Index to Aerial Photography  
Page 6 of 12

Scale of this index: 1:110,000

Copyright © 2011 National Geographic Society, i-cubed

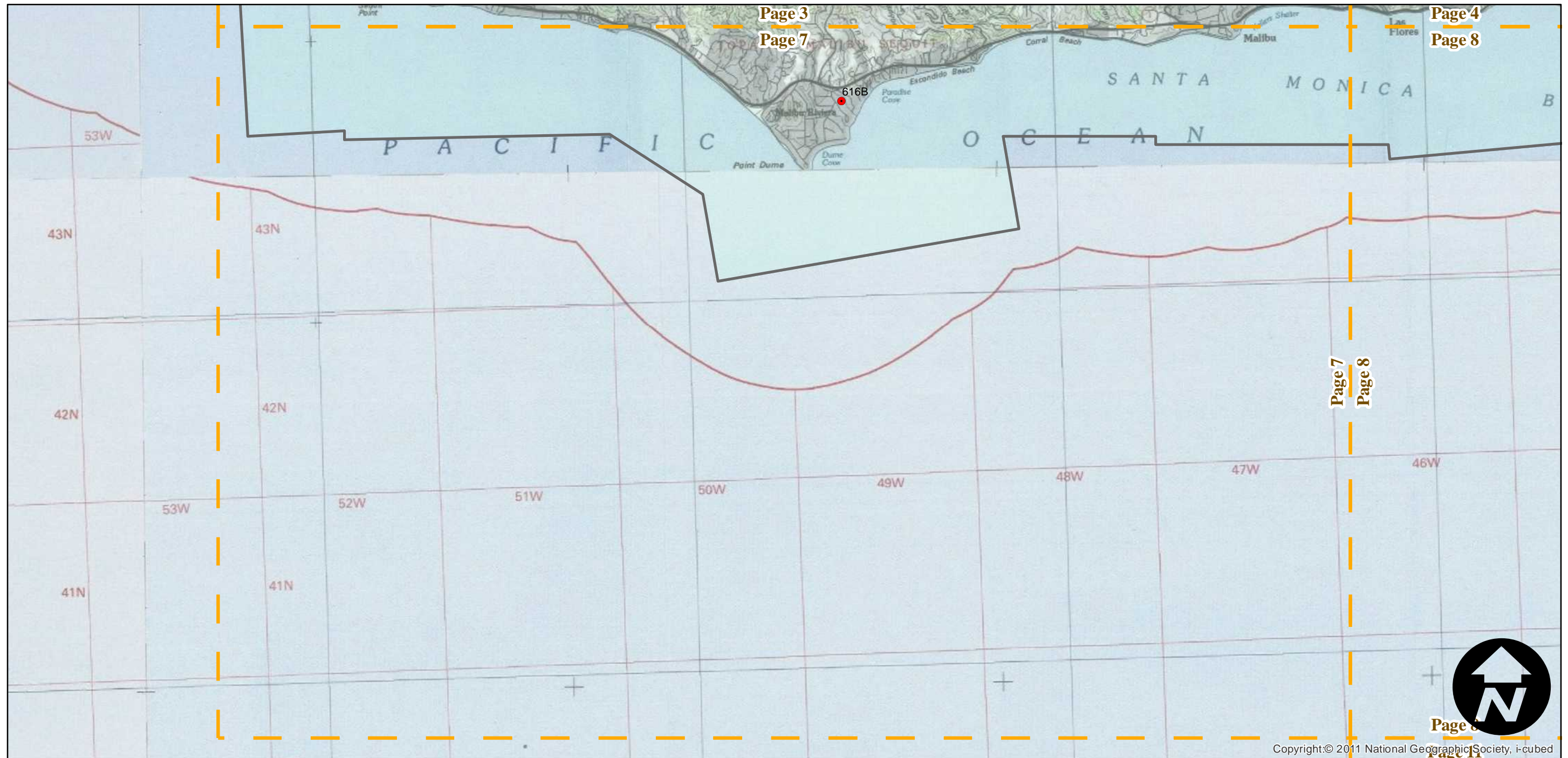
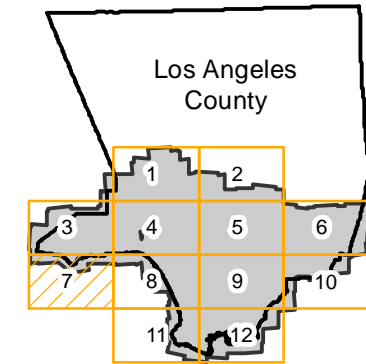
# AMI-LA-65

Counties: Los Angeles  
Flight date(s): 01-01-1965 to 02-28-1966  
Scale: 1: 36,000  
Overlap: 0%

Note: for oversize paper prints see:  
Ref G 1528 L6 A4 1969

Complete Metadata:  
<http://www.library.ucsb.edu/mil/aerial-photography-tools>

## FLIGHT LOCATION



0 2 4 8 Miles

Index to Aerial Photography  
Page 7 of 12

Scale of this index: 1:110,000

Copyright: © 2011 National Geographic Society, i-cubed



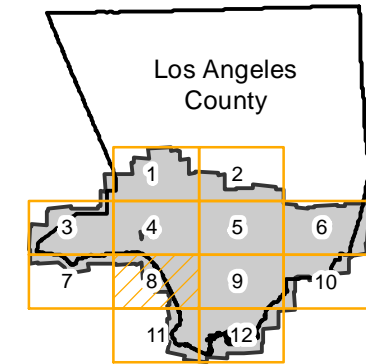
# AMI-LA-65

Counties: Los Angeles  
Flight date(s): 01-01-1965 to 02-28-1966  
Scale: 1:36,000  
Overlap: 0%

Note: for oversize paper prints see:  
Ref G 1528 L6 A4 1969

Complete Metadata:  
<http://www.library.ucsb.edu/mil/aerial-photography-tools>

## FLIGHT LOCATION



0 2 4 8 Miles

Index to Aerial Photography  
Page 8 of 12

Scale of this index: 1:110,000

Copyright © 2011 National Geographic Society, i-cubed

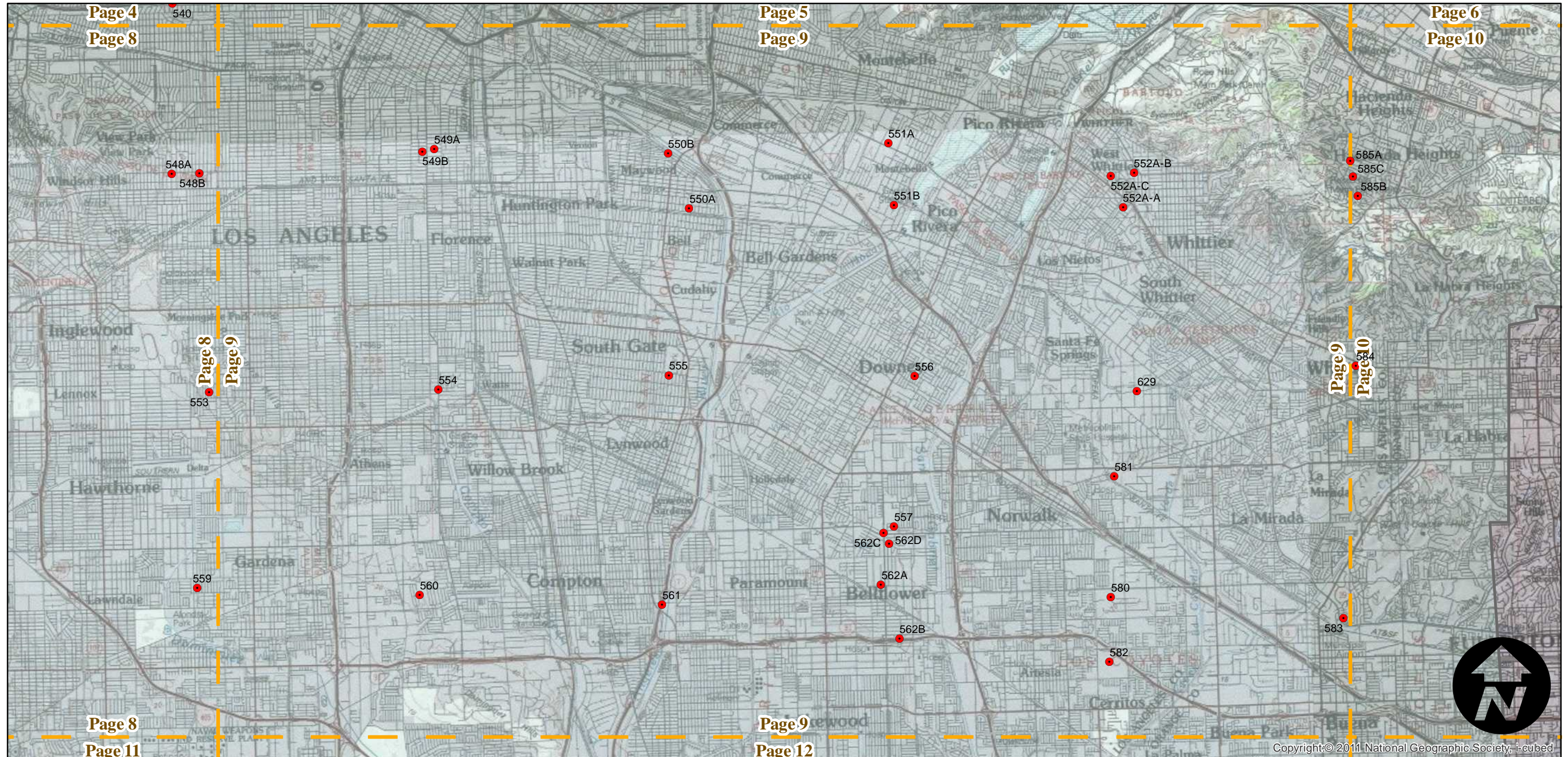
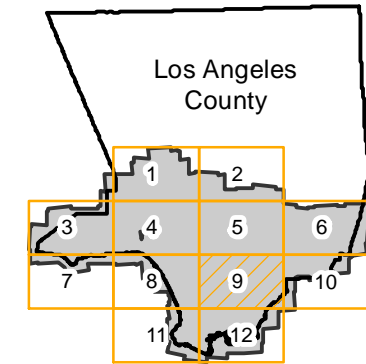
# AMI-LA-65

Counties: Los Angeles  
Flight date(s): 01-01-1965 to 02-28-1966  
Scale: 1: 36,000  
Overlap: 0%

Note: for oversize paper prints see:  
Ref G 1528 L6 A4 1969

Complete Metadata:  
<http://www.library.ucsb.edu/mil/aerial-photography-tools>

## FLIGHT LOCATION



0 2 4 8 Miles

Index to Aerial Photography  
Page 9 of 12

Scale of this index: 1:110,000

Copyright © 2011 National Geographic Society, i-cubed

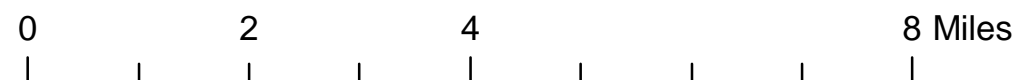
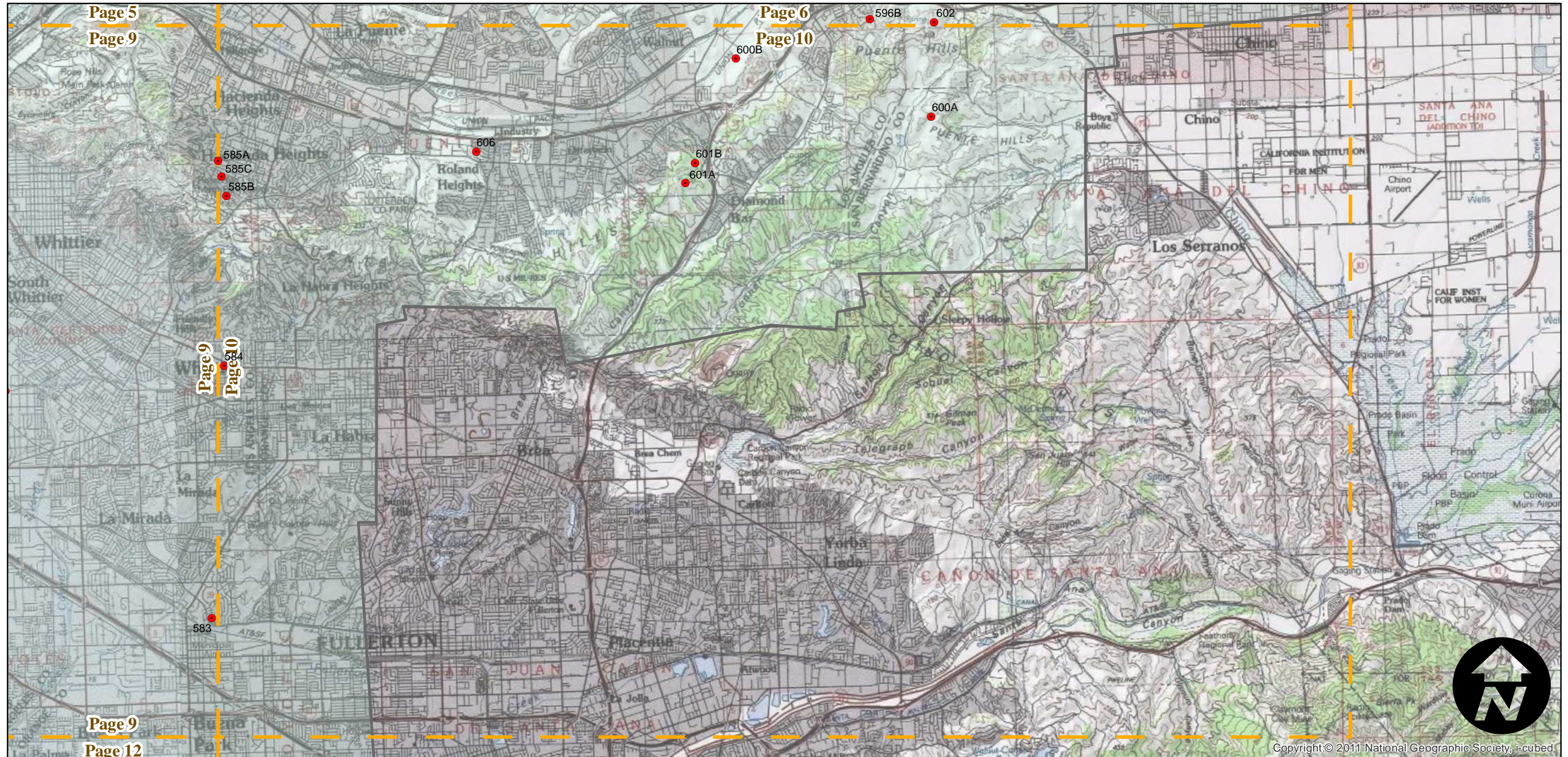
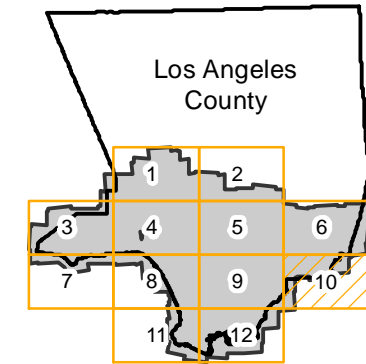
# AMI-LA-65

Counties: Los Angeles  
Flight date(s): 01-01-1965 to 02-28-1966  
Scale: 1:36,000  
Overlap: 0%

Note: for oversize paper prints see:  
Ref G 1528 L6 A4 1969

Complete Metadata:  
<http://www.library.ucsb.edu/mil/aerial-photography-tools>

## FLIGHT LOCATION



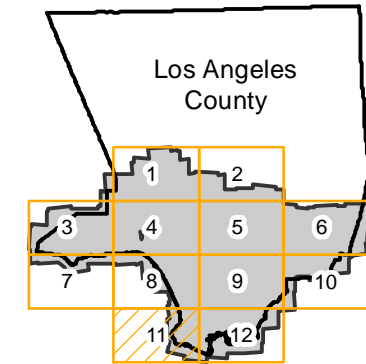
# AMI-LA-65

Counties: Los Angeles  
Flight date(s): 01-01-1965 to 02-28-1966  
Scale: 1: 36,000  
Overlap: 0%

Complete Metadata:  
<http://www.library.ucsb.edu/mil/aerial-photography-tools>

Note: for oversize paper prints see:  
Ref G 1528 L6 A4 1969

## FLIGHT LOCATION



0 2 4 8 Miles

Index to Aerial Photography  
Page 11 of 12

Scale of this index: 1:110,000

Copyright:© 2011 National Geographic Society, i-cubed

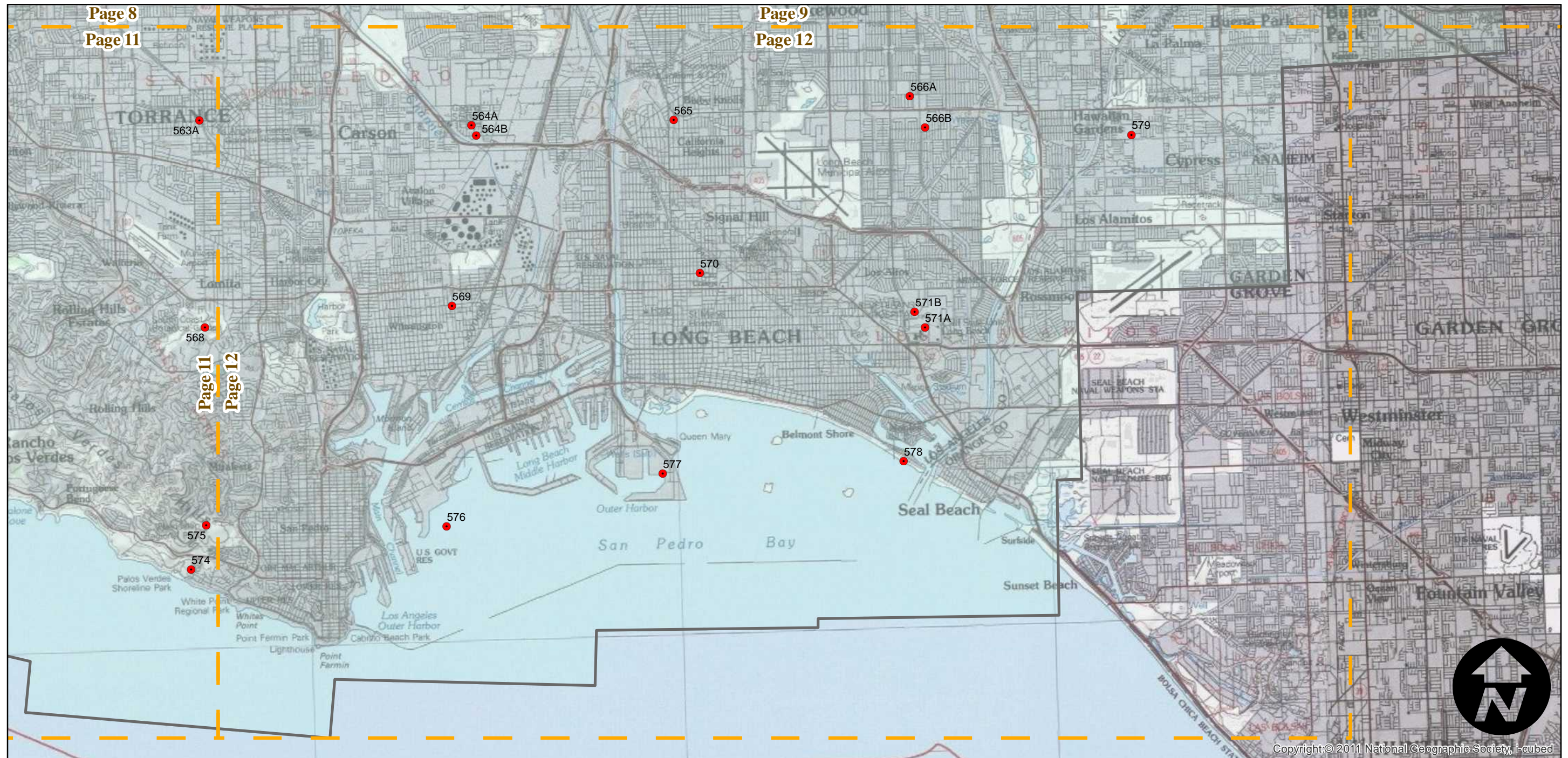
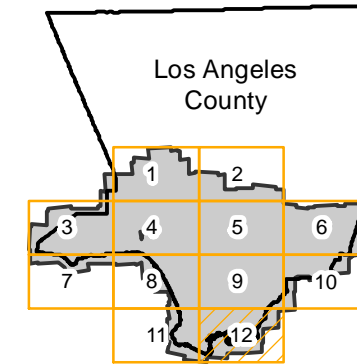
# AMI-LA-65

Counties: Los Angeles  
Flight date(s): 01-01-1965 to 02-28-1966  
Scale: 1:36,000  
Overlap: 0%

Note: for oversize paper prints see:  
Ref G 1528 L6 A4 1969

Complete Metadata:  
<http://www.library.ucsb.edu/mil/aerial-photography-tools>

## FLIGHT LOCATION



0 2 4 8 Miles

Index to Aerial Photography  
Page 12 of 12

Scale of this index: 1:110,000

Copyright © 2011 National Geographic Society, i-cubed