

ABI-1950

Counties: Fresno, Merced, Madera, Tulare, Kings, Monterey, San Benito

Flight date(s): 02-02-1950 to 02-25-1950

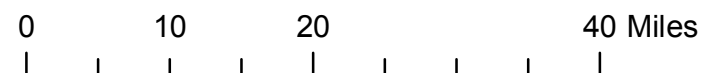
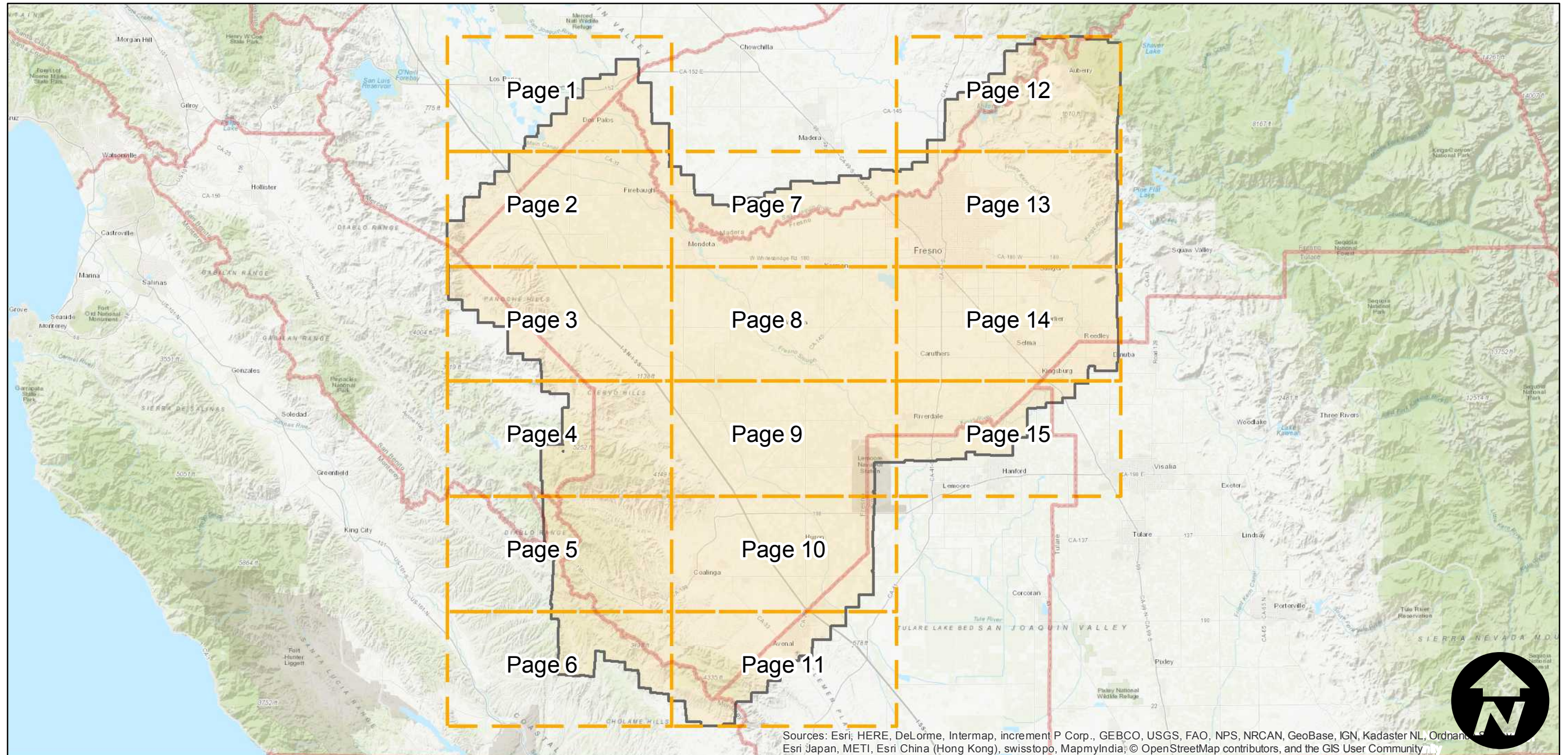
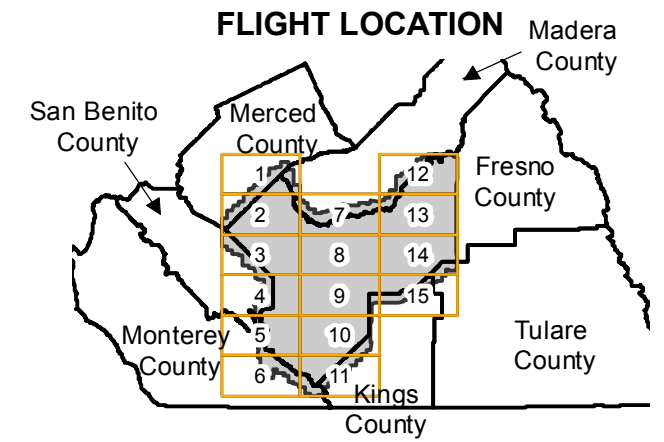
Scale: 1:20,000

Overlap: 60%

Complete Metadata:

<http://www.library.ucsb.edu/map-imagery-lab/aerial-photography-information>

Note: Coverage of the southeastern portion of Fresno County, east of Interstate 5. Coverage does not include Coalinga. Some photographs are 18" x 18" enlargements (1:10,000) and are stored in Oversize Collection.



Index to Aerial Photography
Page Key

Scale of this index: 1:850,000

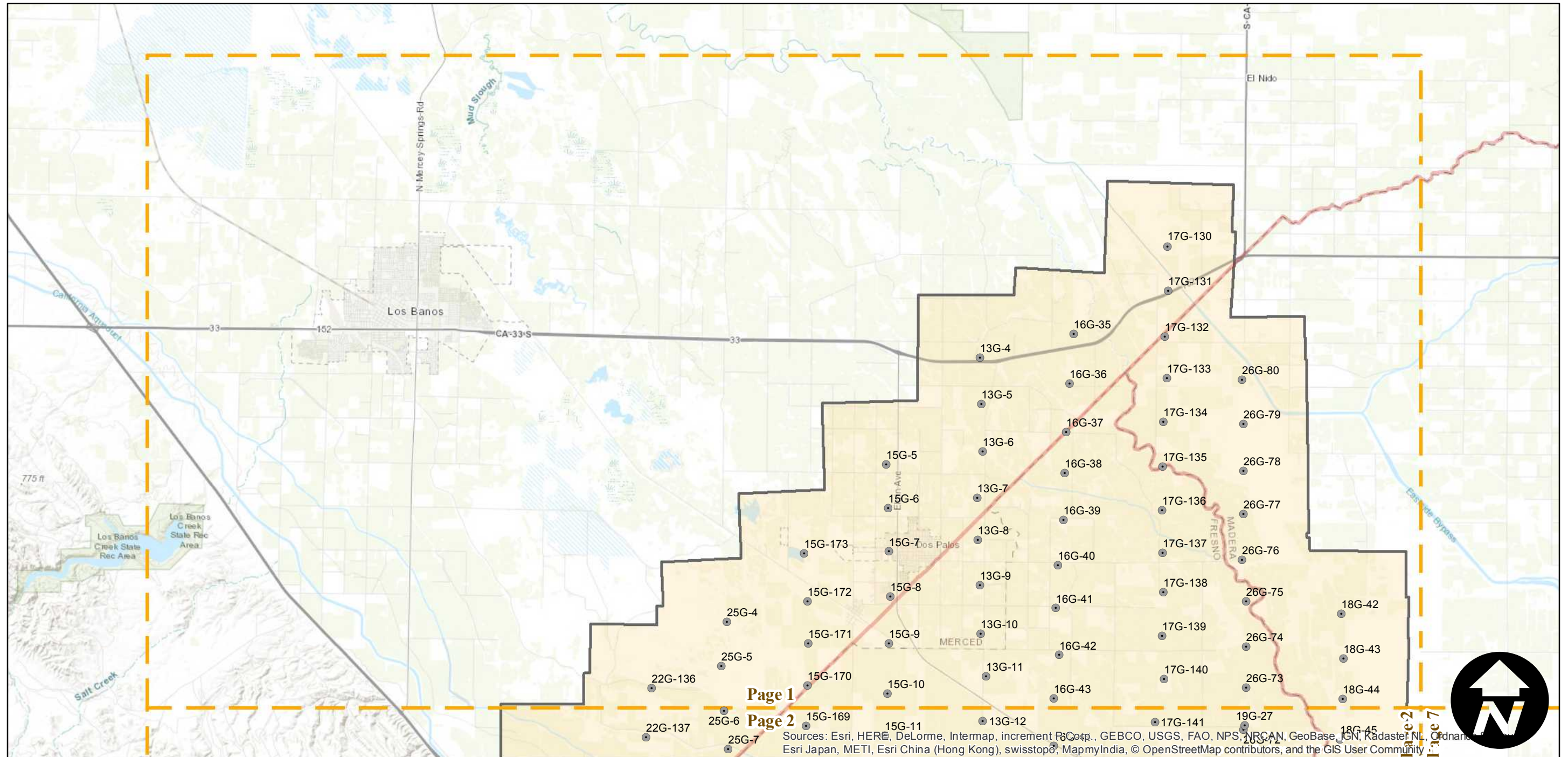
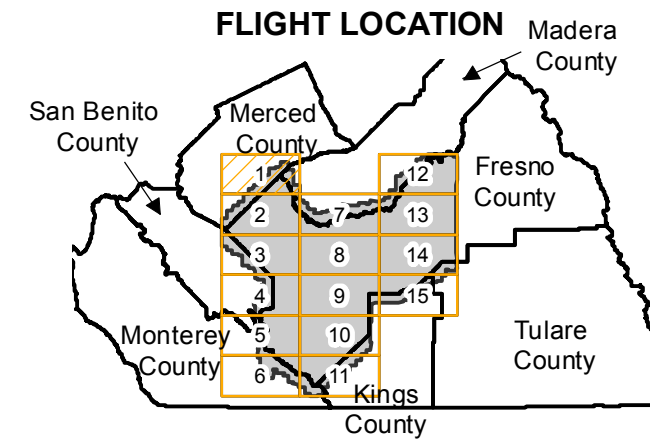
ABI-1950

Counties: Fresno, Merced, Madera, Tulare, Kings, Monterey, San Benito
 Flight date(s): 02-02-1950 to 02-25-1950
 Scale: 1:20,000
 Overlap: 60%

Complete Metadata:
<http://www.library.ucsb.edu/map-imagery-lab/aerial-photography-information>

Note: Coverage of the southeastern portion of Fresno County, east of Interstate 5. Coverage does not include Coalinga. Some photographs are 18" x 18" enlargements (1:10,000) and are stored in Oversize Collection.

- MIL owns frame
- MIL does not own frame



0 2 4 8 Miles

Index to Aerial Photography
 Page 1 of 15

Scale of this index: 1:150,000

Sources: Esri, HERE, DeLorme, Intermap, increment P Corp., GEBCO, USGS, FAO, NPS, NRCAN, GeoBase, IGN, Kadaster NL, Ordnance Survey, Esri Japan, METI, Esri China (Hong Kong), swisstopo, MapmyIndia, © OpenStreetMap contributors, and the GIS User Community

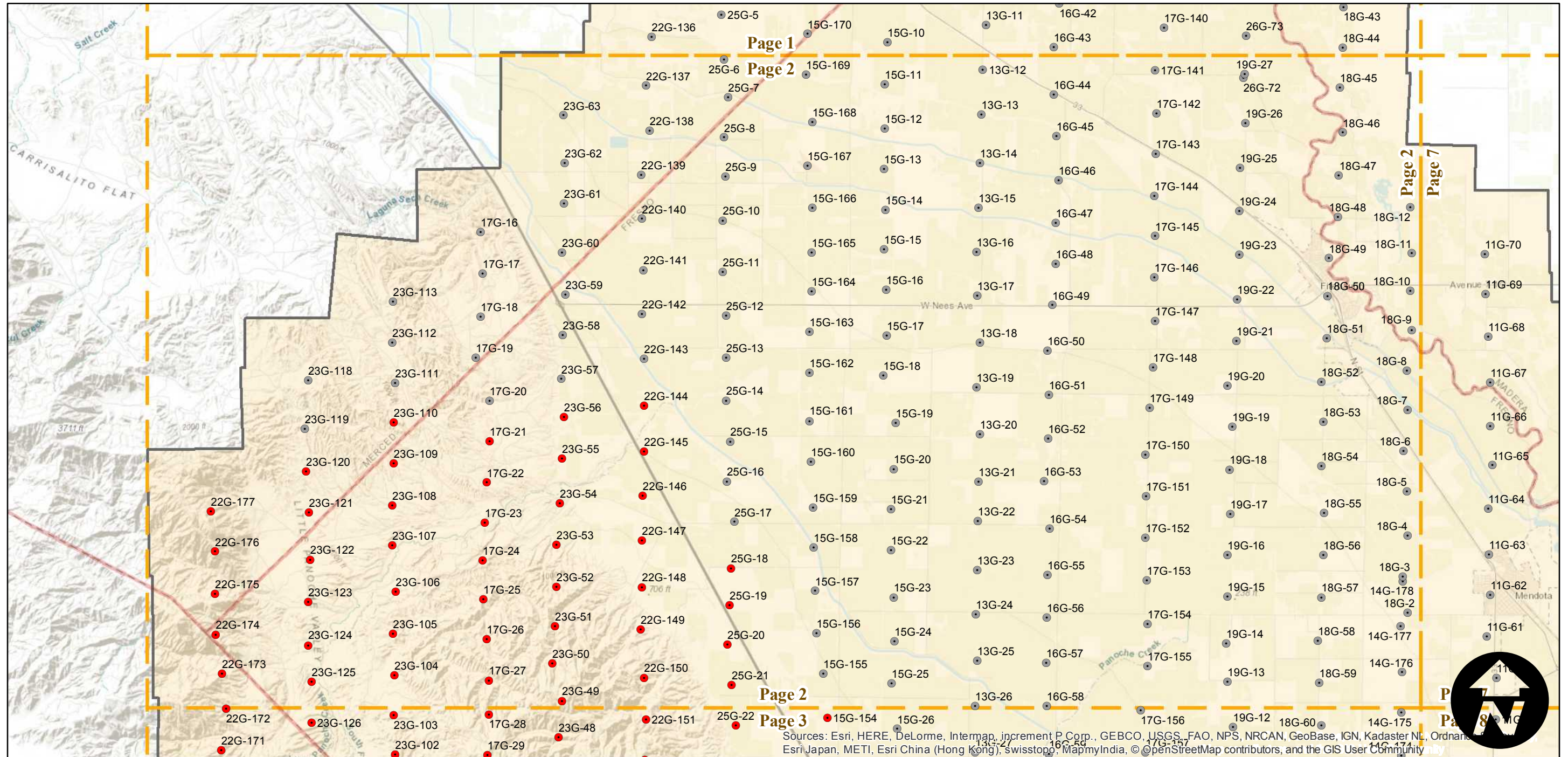
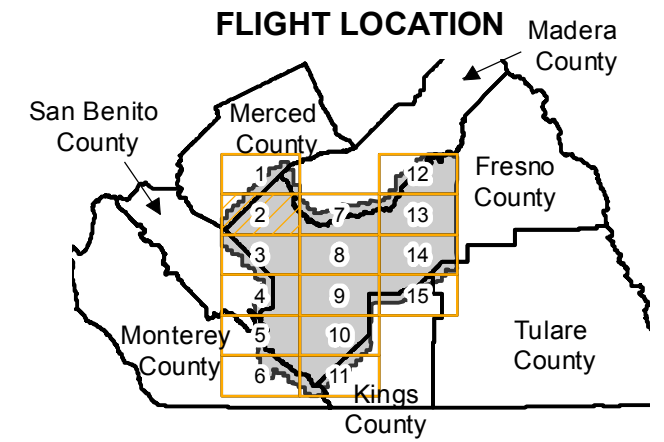
ABI-1950

Counties: Fresno, Merced, Madera, Tulare, Kings, Monterey, San Benito
 Flight date(s): 02-02-1950 to 02-25-1950
 Scale: 1:20,000
 Overlap: 60%

Complete Metadata:
<http://www.library.ucsb.edu/map-imagery-lab/aerial-photography-information>

Note: Coverage of the southeastern portion of Fresno County, east of Interstate 5. Coverage does not include Coalinga. Some photographs are 18" x 18" enlargements (1:10,000) and are stored in Oversize Collection.

- MIL owns frame
- MIL does not own frame



Sources: Esri, HERE, DeLorme, Intermap, increment P Corp., GEBCO, USGS, FAO, NPS, NRCAN, GeoBase, IGN, Kadaster NL, Ordnance Survey, Esri Japan, METI, Esri China (Hong Kong), swisstopo, MapmyIndia, © OpenStreetMap contributors, and the GIS User Community

0 2 4 8 Miles

Index to Aerial Photography
 Page 2 of 15

Scale of this index: 1:150,000

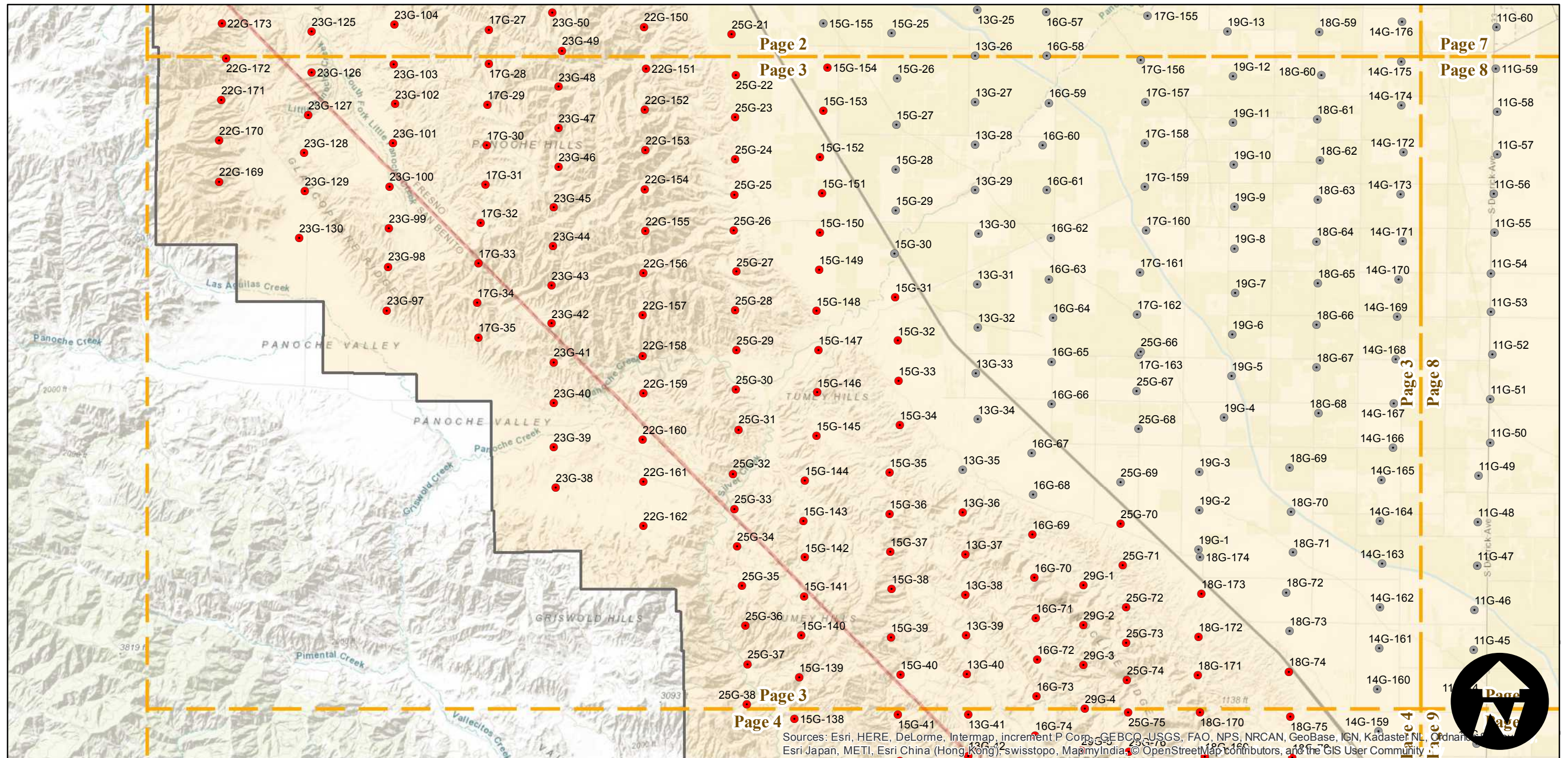
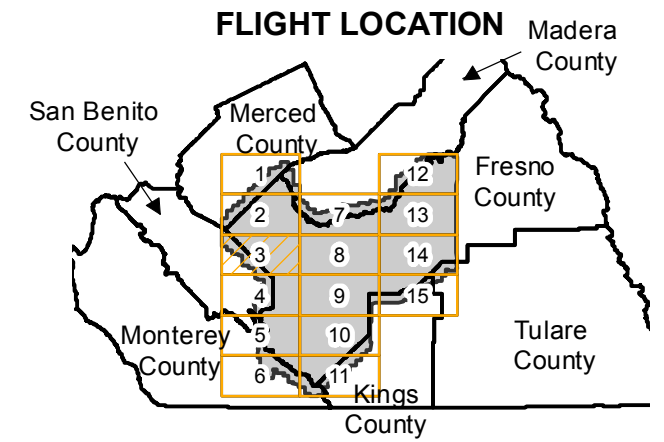
ABI-1950

Counties: Fresno, Merced, Madera, Tulare, Kings, Monterey, San Benito
 Flight date(s): 02-02-1950 to 02-25-1950
 Scale: 1:20,000
 Overlap: 60%

Complete Metadata:
<http://www.library.ucsb.edu/map-imagery-lab/aerial-photography-information>

Note: Coverage of the southeastern portion of Fresno County, east of Interstate 5. Coverage does not include Coalinga. Some photographs are 18" x 18" enlargements (1:10,000) and are stored in Oversize Collection.

- MIL owns frame
- MIL does not own frame



0 2 4 8 Miles

Index to Aerial Photography
 Page 3 of 15

Scale of this index: 1:150,000

Sources: Esri, HERE, DeLorme, Intermap, increment P Corp., GEBCO, USGS, FAO, NPS, NRCAN, GeoBase, IGN, Kadaster NL, Ordnance Survey, Esri Japan, METI, Esri China (Hong Kong), Swisstopo, MapmyIndia, © OpenStreetMap contributors, and the GIS User Community

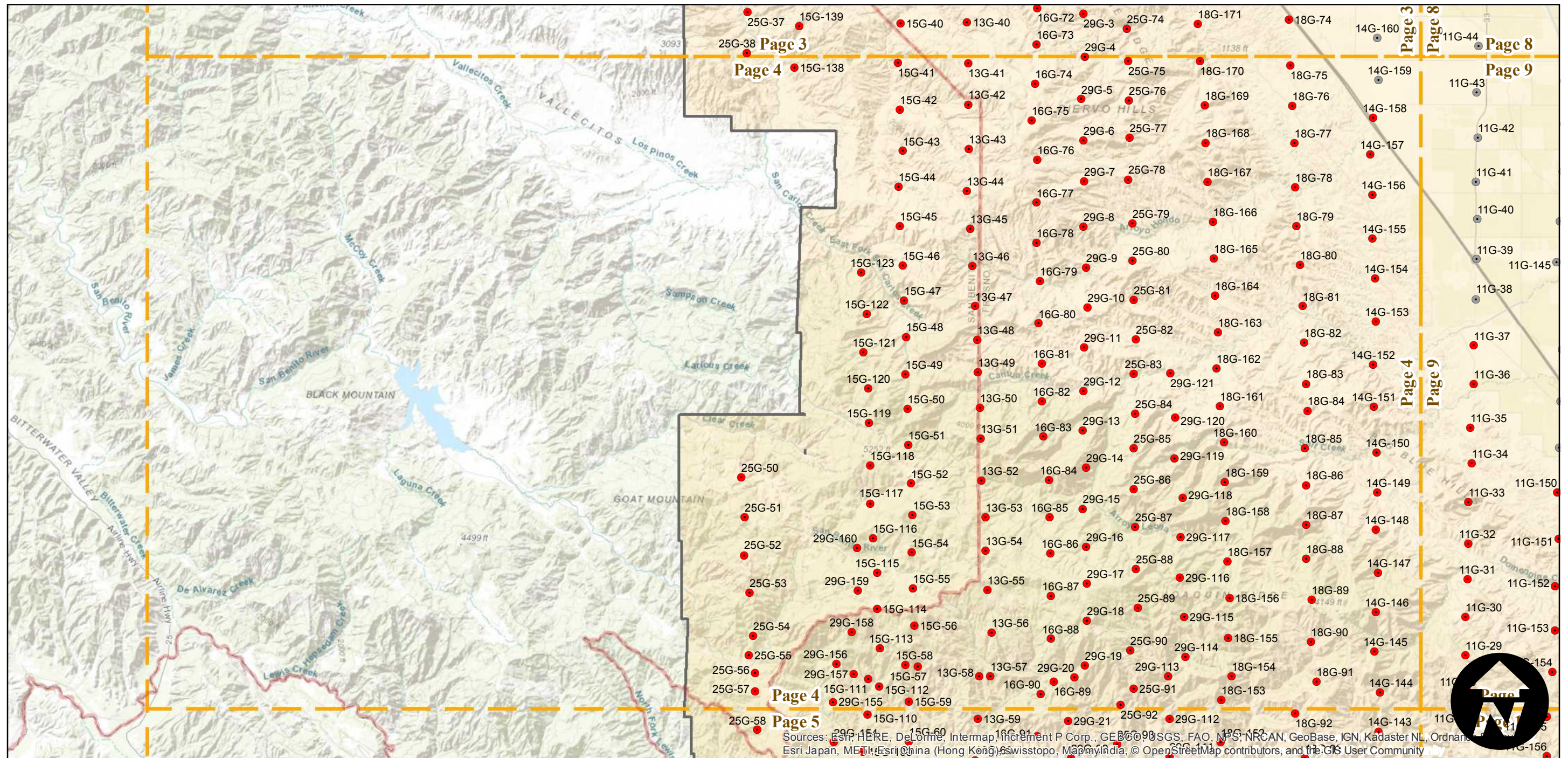
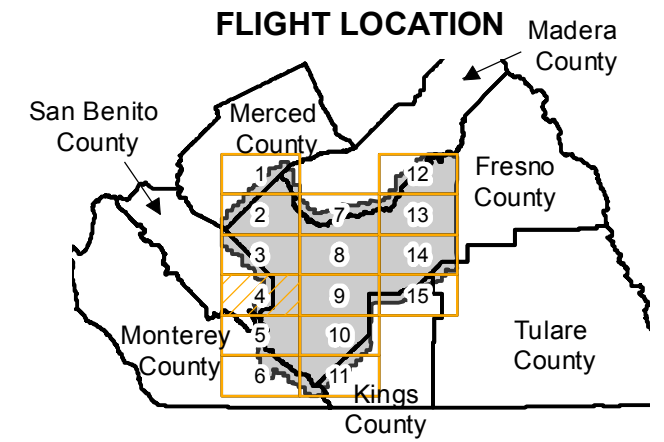
ABI-1950

Counties: Fresno, Merced, Madera, Tulare, Kings, Monterey, San Benito
 Flight date(s): 02-02-1950 to 02-25-1950
 Scale: 1:20,000
 Overlap: 60%

Complete Metadata:
<http://www.library.ucsb.edu/map-imagery-lab/aerial-photography-information>

Note: Coverage of the southeastern portion of Fresno County, east of Interstate 5. Coverage does not include Coalinga. Some photographs are 18" x 18" enlargements (1:10,000) and are stored in Oversize Collection.

- MIL owns frame
- MIL does not own frame



0 2 4 8 Miles

Index to Aerial Photography
 Page 4 of 15

Scale of this index: 1:150,000

Sources: Esri, HERE, DeLorme, Intermap, increment P Corp., GEBCO, USGS, FAO, NPS, NRCAN, GeoBase, IGN, Kadaster NL, Ordnance Survey, Esri Japan, METI, Esri China (Hong Kong), Swisstopo, MapmyIndia, © OpenStreetMap contributors, and the GIS User Community

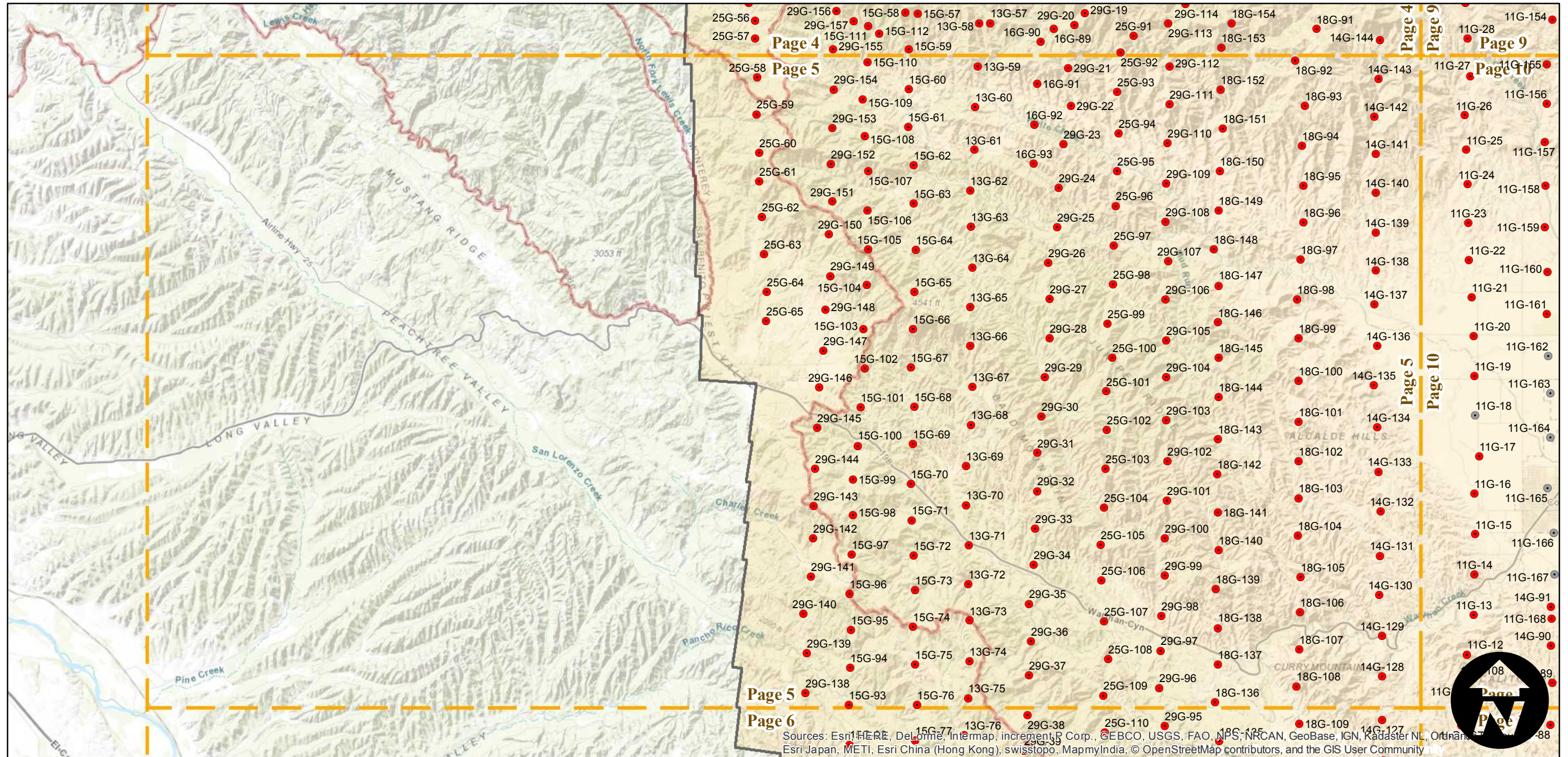
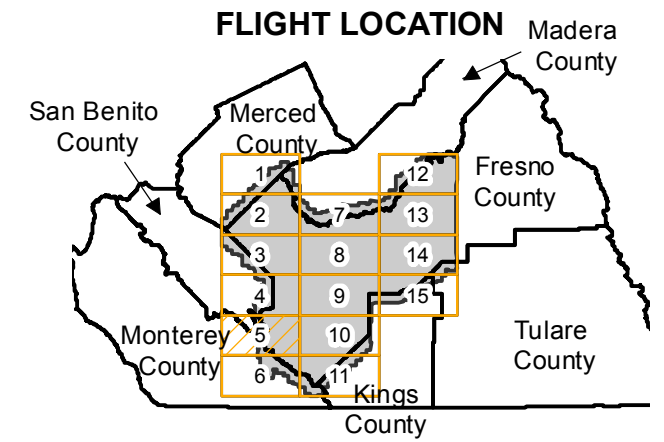
ABI-1950

Counties: Fresno, Merced, Madera, Tulare, Kings, Monterey, San Benito
 Flight date(s): 02-02-1950 to 02-25-1950
 Scale: 1:20,000
 Overlap: 60%

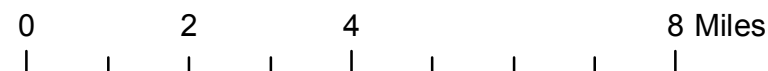
Complete Metadata:
<http://www.library.ucsb.edu/map-imagery-lab/aerial-photography-information>

Note: Coverage of the southeastern portion of Fresno County, east of Interstate 5. Coverage does not include Coalinga. Some photographs are 18" x 18" enlargements (1:10,000) and are stored in Oversize Collection.

- MIL owns frame
- MIL does not own frame



Sources: Esri, HERE, DeLorme, Intermap, increment P Corp., GEBCO, USGS, FAO, NPS, NRCAN, GeoBase, IGN, Kadaster NL, Ordnance Survey, Esri Japan, METI, Esri China (Hong Kong), swisstopo, MapmyIndia, © OpenStreetMap contributors, and the GIS User Community



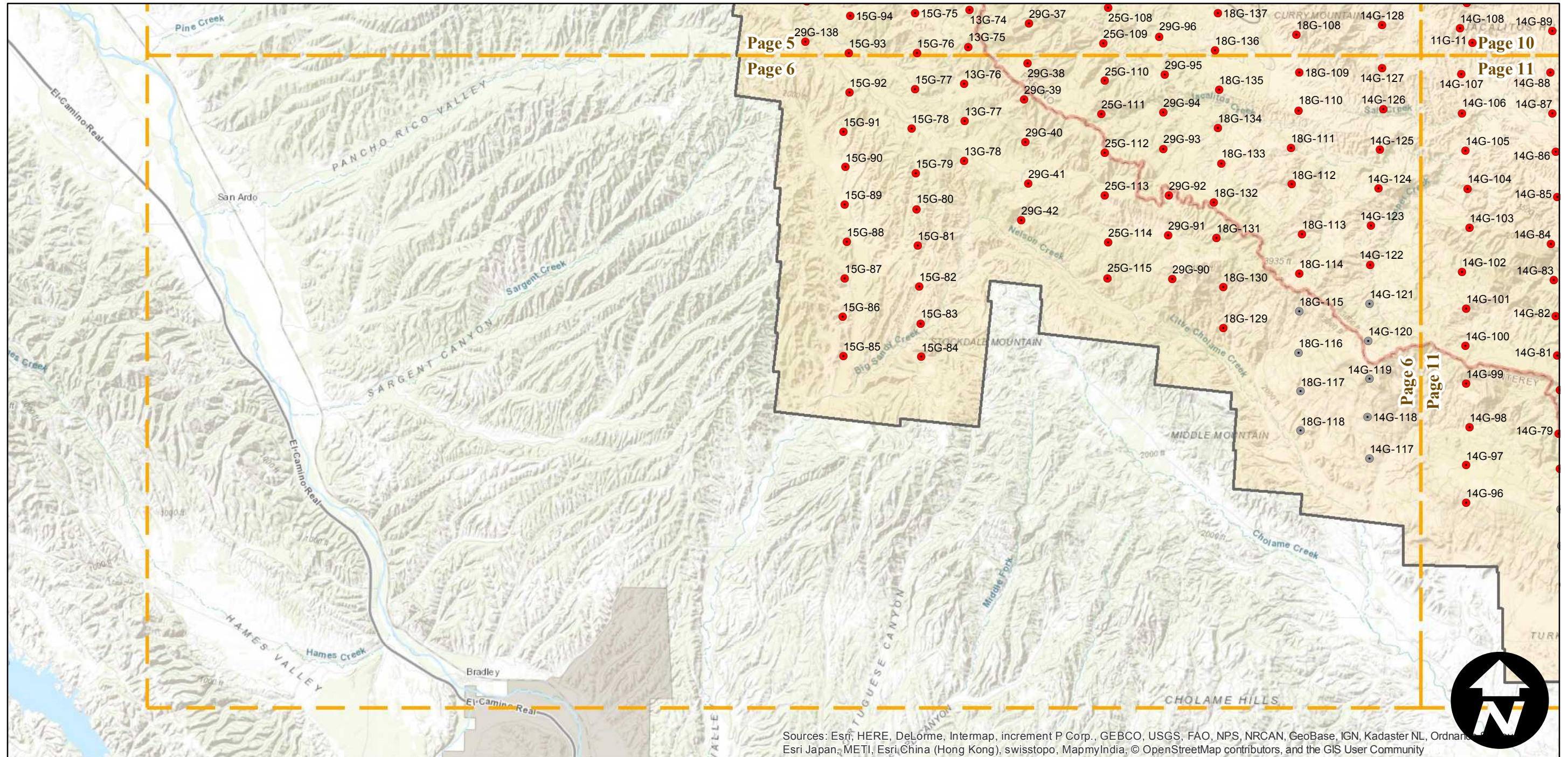
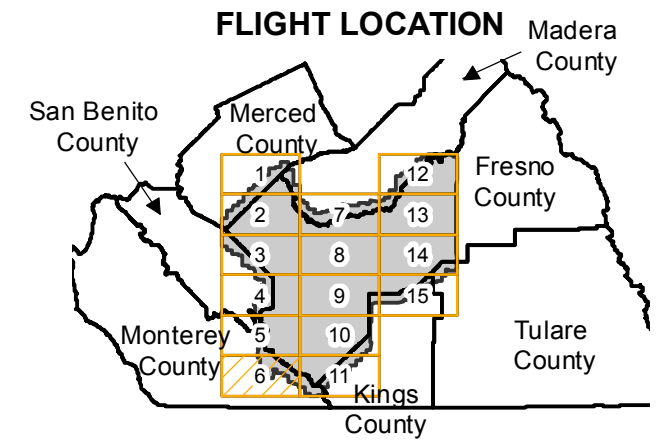
ABI-1950

Counties: Fresno, Merced, Madera, Tulare, Kings, Monterey, San Benito
 Flight date(s): 02-02-1950 to 02-25-1950
 Scale: 1:20,000
 Overlap: 60%

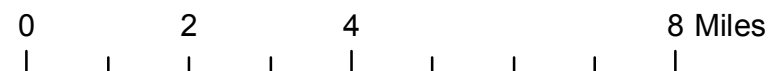
Complete Metadata:
<http://www.library.ucsb.edu/map-imagery-lab/aerial-photography-information>

Note: Coverage of the southeastern portion of Fresno County, east of Interstate 5. Coverage does not include Coalinga. Some photographs are 18" x 18" enlargements (1:10,000) and are stored in Oversize Collection.

- MIL owns frame
- MIL does not own frame



Sources: Esri, HERE, DeLorme, Intermap, increment P Corp., GEBCO, USGS, FAO, NPS, NRCAN, GeoBase, IGN, Kadaster NL, Ordnance Survey, Esri Japan, METI, Esri China (Hong Kong), swisstopo, MapmyIndia, © OpenStreetMap contributors, and the GIS User Community



ABI-1950

Counties: Fresno, Merced, Madera, Tulare, Kings, Monterey, San Benito

Flight date(s): 02-02-1950 to 02-25-1950

Scale: 1:20,000

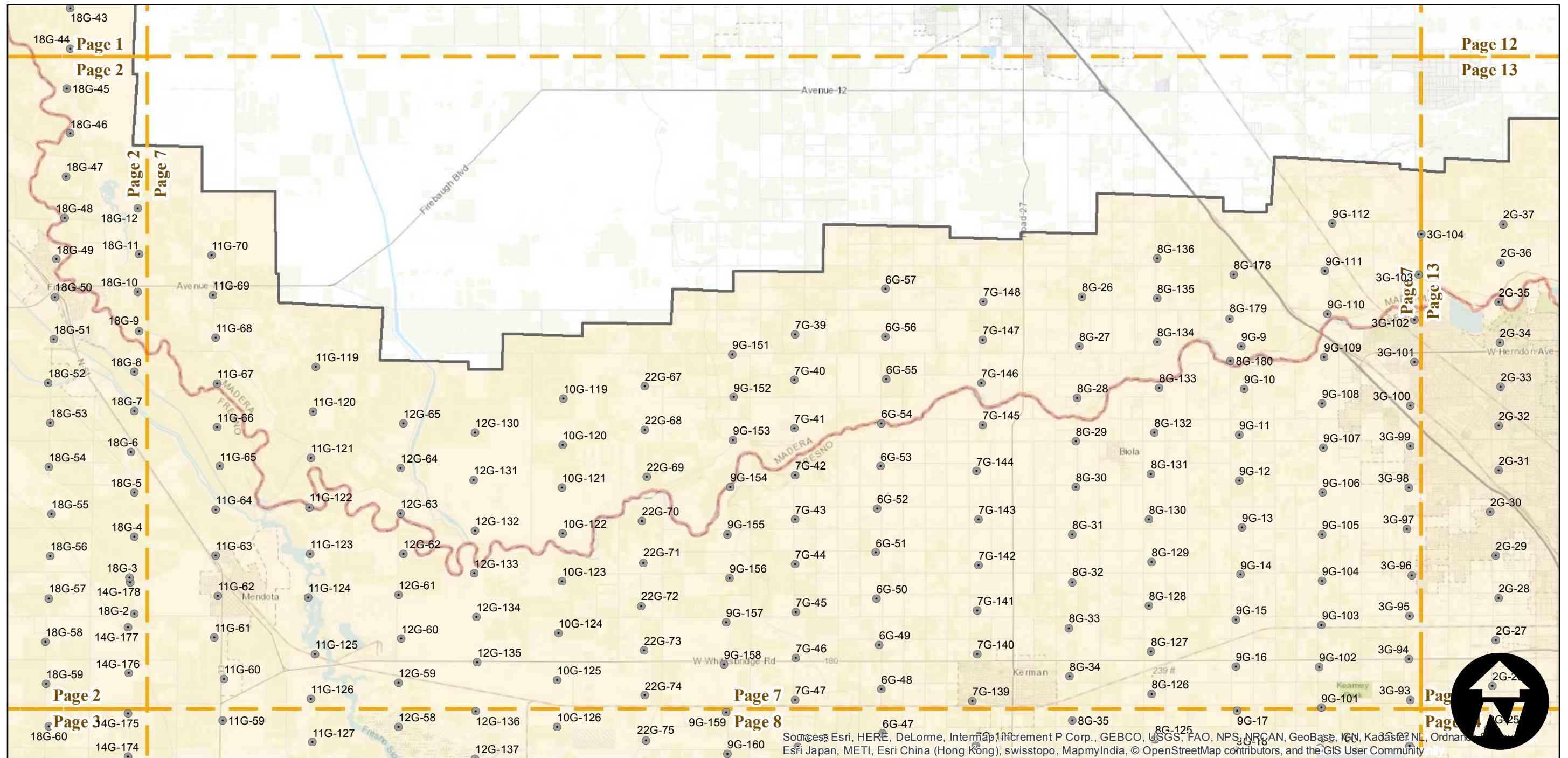
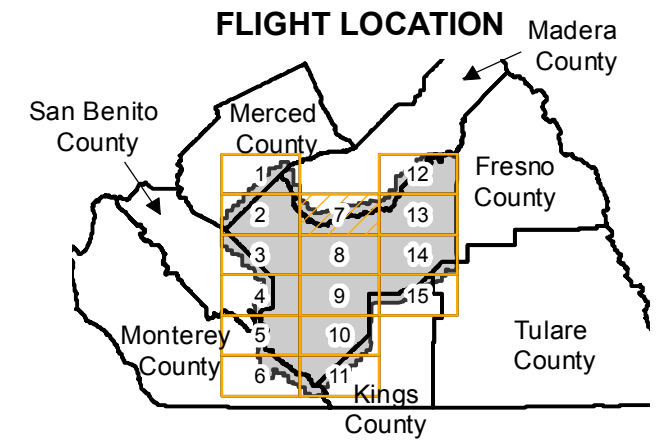
Overlap: 60%

Complete Metadata:

<http://www.library.ucsb.edu/map-imagery-lab/aerial-photography-information>

Note: Coverage of the southeastern portion of Fresno County, east of Interstate 5. Coverage does not include Coalinga. Some photographs are 18" x 18" enlargements (1:10,000) and are stored in Oversize Collection.

- MIL owns frame
- MIL does not own frame



Sources: Esri, HERE, DeLorme, Intermap, increment P Corp., GEBCO, USGS, FAO, NPS, NRCAN, GeoBase, IGN, Kadaster NL, Ordnance Survey, Esri Japan, METI, Esri China (Hong Kong), swisstopo, MapmyIndia, © OpenStreetMap contributors, and the GIS User Community

0 2 4 8 Miles

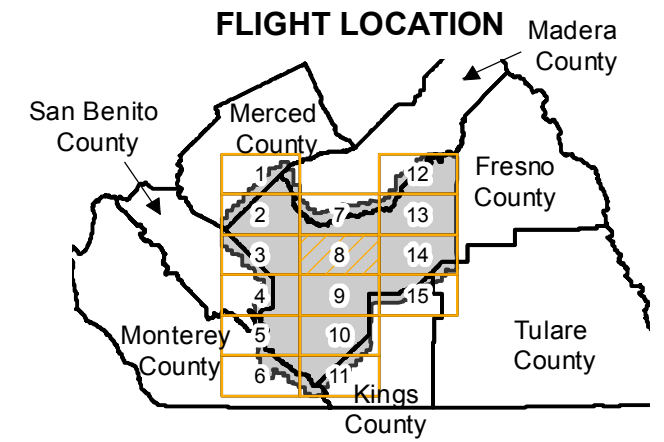
Index to Aerial Photography
Page 7 of 15

Scale of this index: 1:150,000

ABI-1950

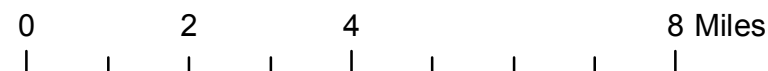
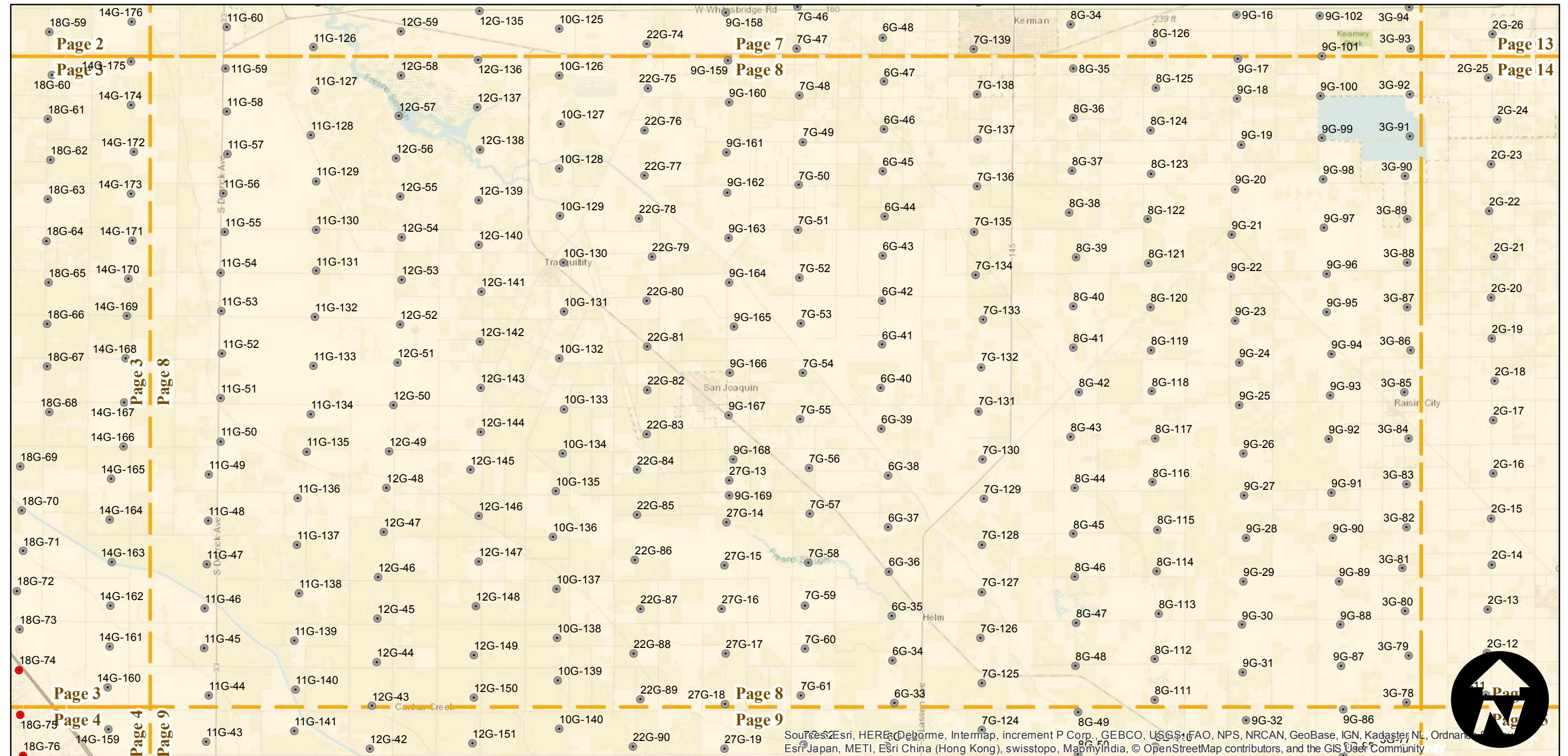
Counties: Fresno, Merced, Madera, Tulare, Kings, Monterey, San Benito
 Flight date(s): 02-02-1950 to 02-25-1950
 Scale: 1:20,000
 Overlap: 60%

Note: Coverage of the southeastern portion of Fresno County, east of Interstate 5. Coverage does not include Coalinga. Some photographs are 18" x 18" enlargements (1:10,000) and are stored in Oversize Collection.



Complete Metadata:
<http://www.library.ucsb.edu/map-imagery-lab/aerial-photography-information>

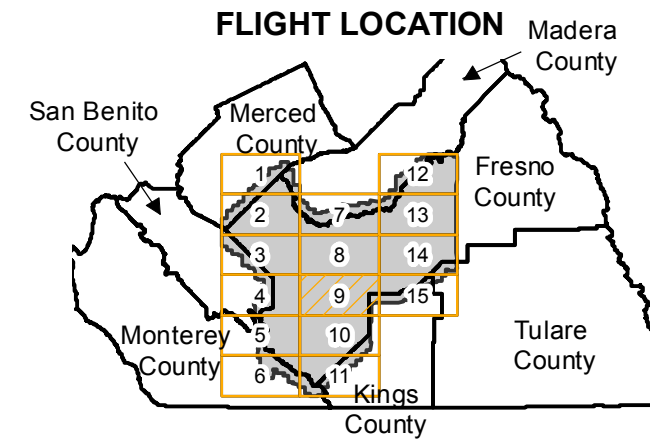
- MIL owns frame
- MIL does not own frame



ABI-1950

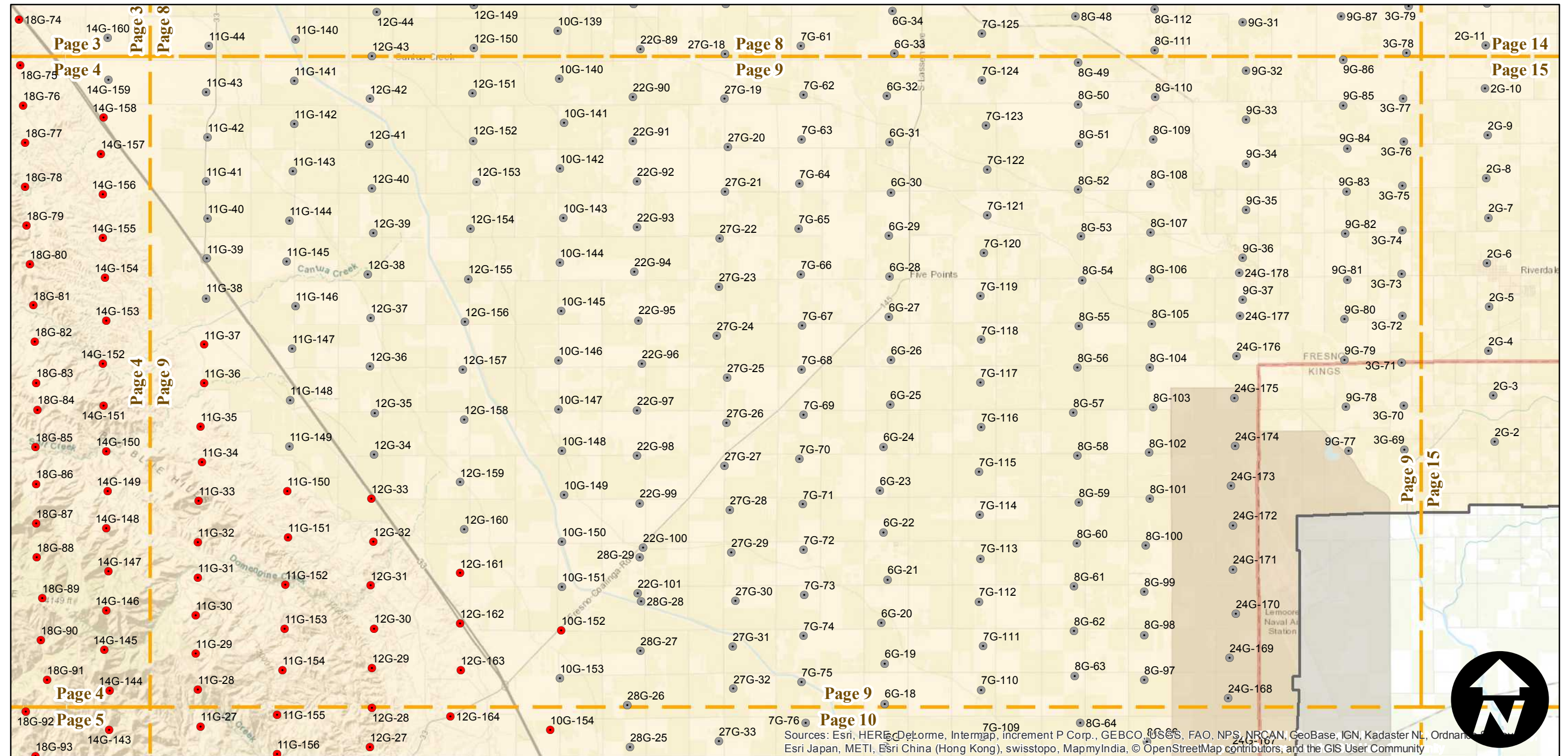
Counties: Fresno, Merced, Madera, Tulare, Kings, Monterey, San Benito
 Flight date(s): 02-02-1950 to 02-25-1950
 Scale: 1:20,000
 Overlap: 60%

Note: Coverage of the southeastern portion of Fresno County, east of Interstate 5. Coverage does not include Coalinga. Some photographs are 18" x 18" enlargements (1:10,000) and are stored in Oversize Collection.



Complete Metadata:
<http://www.library.ucsb.edu/map-imagery-lab/aerial-photography-information>

- MIL owns frame
- MIL does not own frame



Sources: Esri, HERE, DeLorme, Intermap, increment P Corp., GEBCO, USGS, FAO, NPS, NRCAN, GeoBase, IGN, Kadaster NL, Ordnance Survey, Esri Japan, METI, Esri China (Hong Kong), swisstopo, MapmyIndia, © OpenStreetMap contributors, and the GIS User Community

0 2 4 8 Miles

Index to Aerial Photography
 Page 9 of 15

Scale of this index: 1:150,000

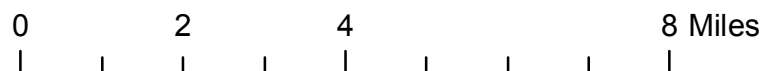
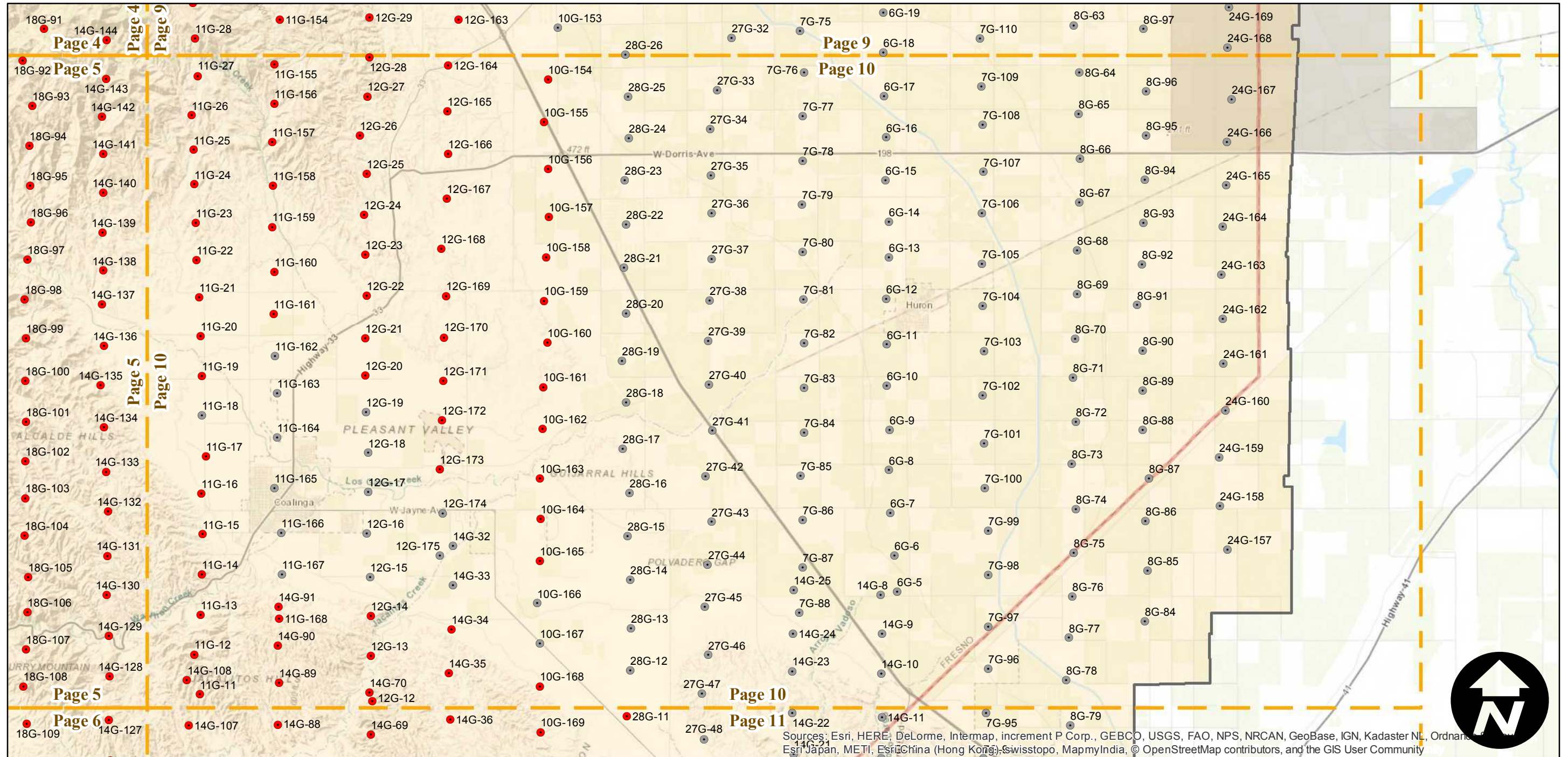
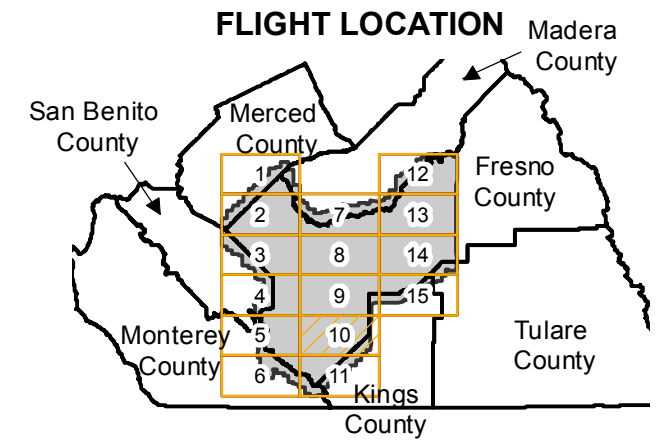
ABI-1950

Counties: Fresno, Merced, Madera, Tulare, Kings, Monterey, San Benito
 Flight date(s): 02-02-1950 to 02-25-1950
 Scale: 1:20,000
 Overlap: 60%

Complete Metadata:
<http://www.library.ucsb.edu/map-imagery-lab/aerial-photography-information>

Note: Coverage of the southeastern portion of Fresno County, east of Interstate 5. Coverage does not include Coalinga. Some photographs are 18" x 18" enlargements (1:10,000) and are stored in Oversize Collection.

- MIL owns frame
- MIL does not own frame



Sources: Esri, HERE, DeLorme, Intermap, increment P Corp., GEBCO, USGS, FAO, NPS, NRCAN, GeoBase, IGN, Kadaster NL, Ordnance Survey, Esri Japan, METI, Esri China (Hong Kong), Swisstopo, MapmyIndia, © OpenStreetMap contributors, and the GIS User Community

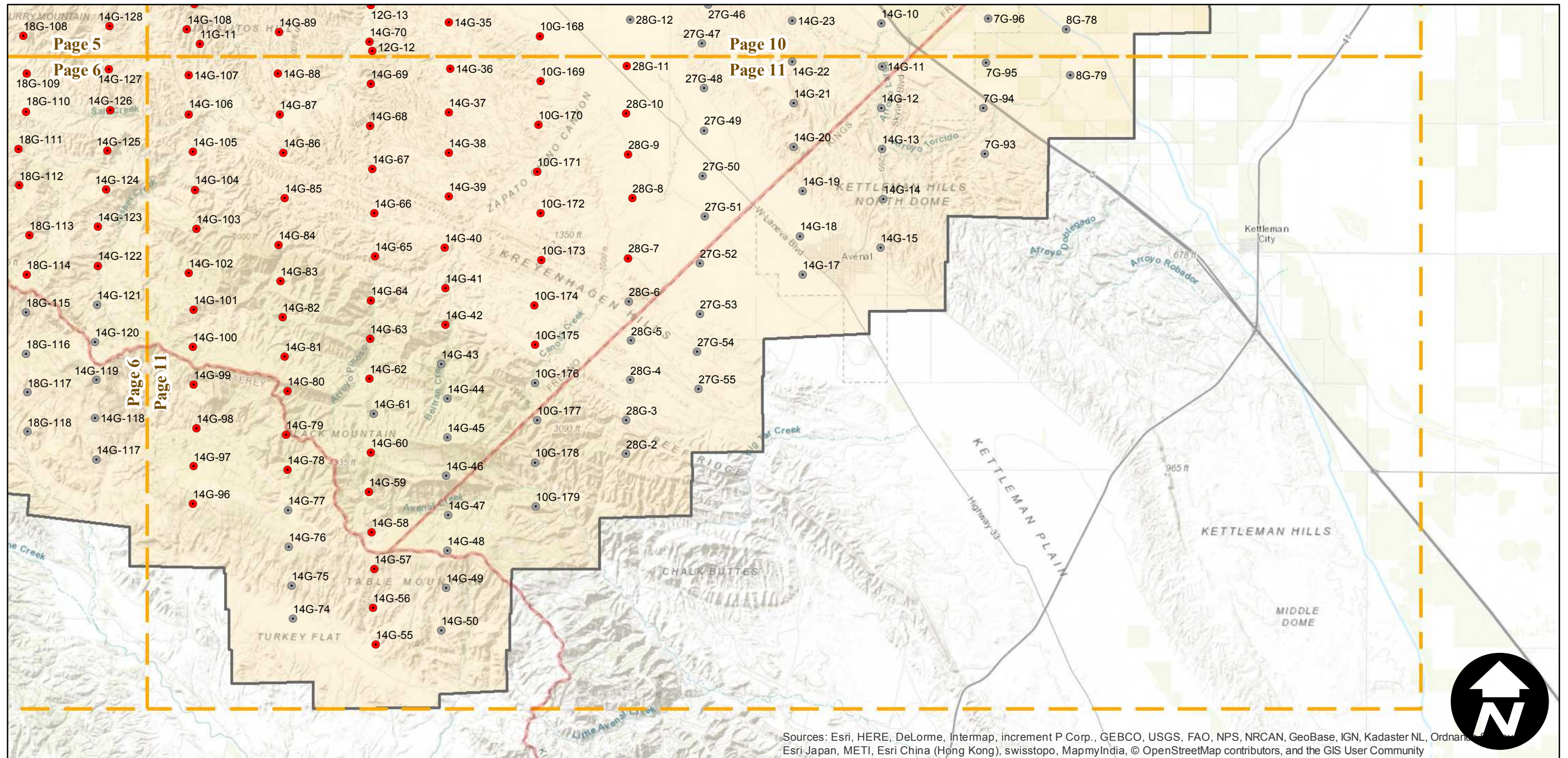
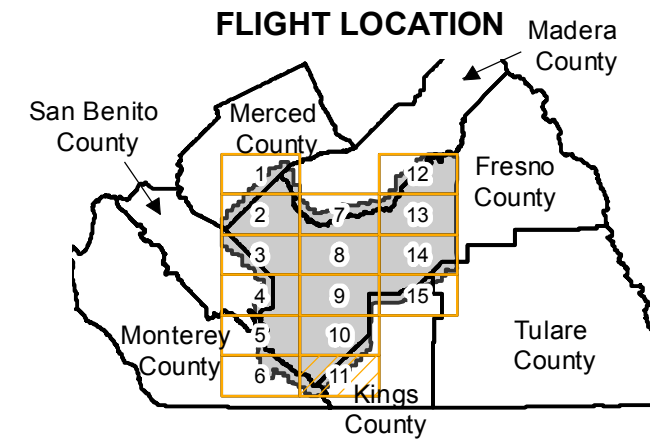
ABI-1950

Counties: Fresno, Merced, Madera, Tulare, Kings, Monterey, San Benito
 Flight date(s): 02-02-1950 to 02-25-1950
 Scale: 1:20,000
 Overlap: 60%

Complete Metadata:
<http://www.library.ucsb.edu/map-imagery-lab/aerial-photography-information>

Note: Coverage of the southeastern portion of Fresno County, east of Interstate 5. Coverage does not include Coalinga. Some photographs are 18" x 18" enlargements (1:10,000) and are stored in Oversize Collection.

- MIL owns frame
- MIL does not own frame



Sources: Esri, HERE, DeLorme, Intermap, increment P Corp., GEBCO, USGS, FAO, NPS, NRCAN, GeoBase, IGN, Kadaster NL, Ordnance Survey, Esri Japan, METI, Esri China (Hong Kong), swisstopo, MapmyIndia, © OpenStreetMap contributors, and the GIS User Community

0 2 4 8 Miles

Index to Aerial Photography
 Page 11 of 15

Scale of this index: 1:150,000

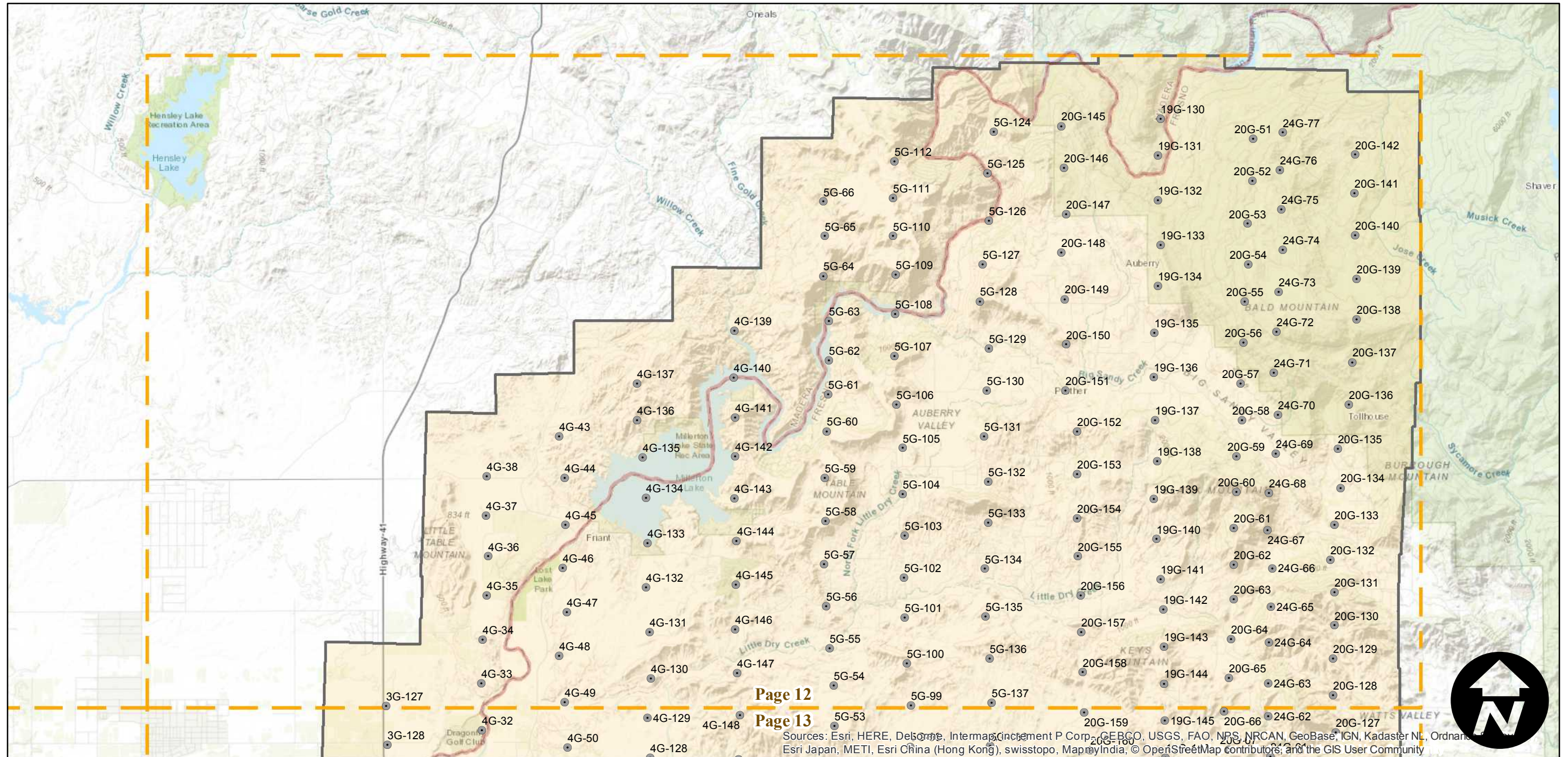
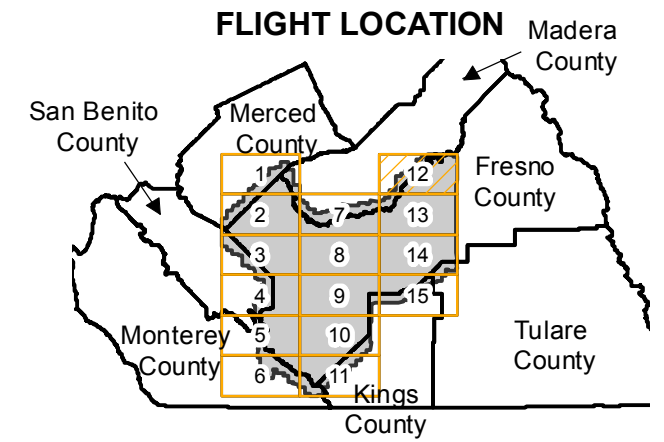
ABI-1950

Counties: Fresno, Merced, Madera, Tulare, Kings, Monterey, San Benito
 Flight date(s): 02-02-1950 to 02-25-1950
 Scale: 1:20,000
 Overlap: 60%

Complete Metadata:
<http://www.library.ucsb.edu/map-imagery-lab/aerial-photography-information>

Note: Coverage of the southeastern portion of Fresno County, east of Interstate 5. Coverage does not include Coalinga. Some photographs are 18" x 18" enlargements (1:10,000) and are stored in Oversize Collection.

- MIL owns frame
- MIL does not own frame



0 2 4 8 Miles

Index to Aerial Photography
 Page 12 of 15

Scale of this index: 1:150,000

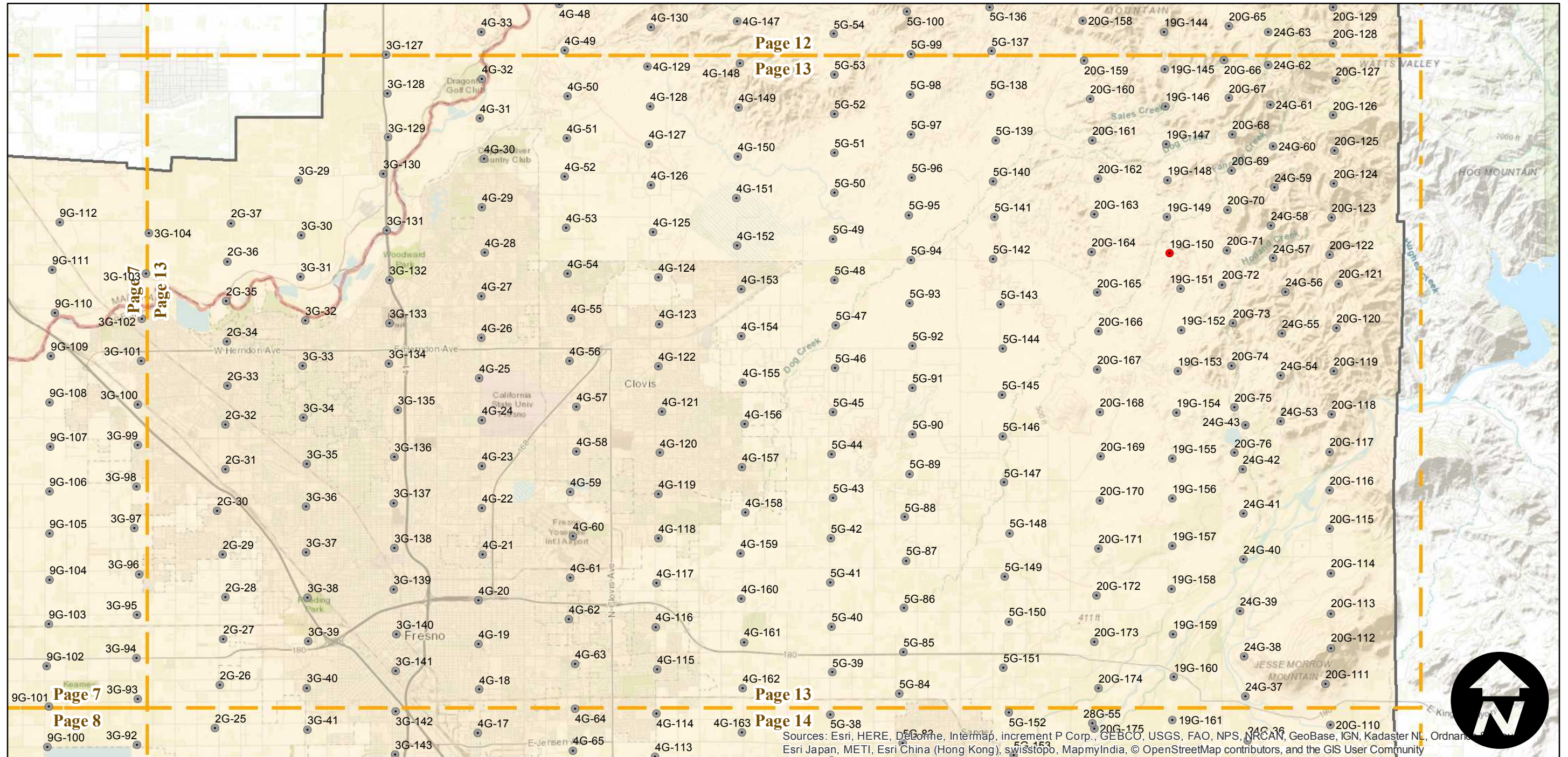
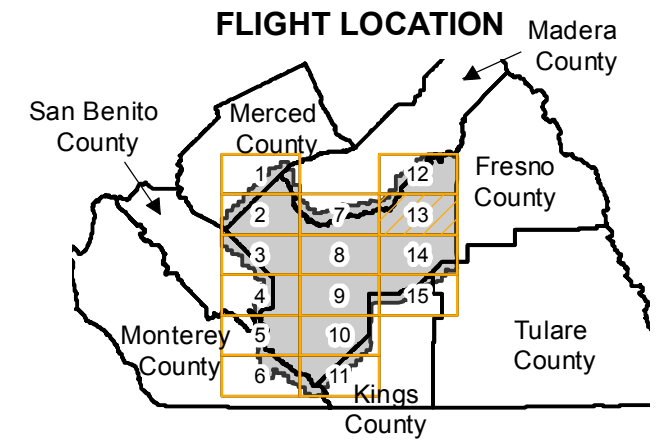
ABI-1950

Counties: Fresno, Merced, Madera, Tulare, Kings, Monterey, San Benito
 Flight date(s): 02-02-1950 to 02-25-1950
 Scale: 1:20,000
 Overlap: 60%

Complete Metadata:
<http://www.library.ucsb.edu/map-imagery-lab/aerial-photography-information>

Note: Coverage of the southeastern portion of Fresno County, east of Interstate 5. Coverage does not include Coalinga. Some photographs are 18" x 18" enlargements (1:10,000) and are stored in Oversize Collection.

- MIL owns frame
- MIL does not own frame



Sources: Esri, HERE, DeLorme, Intermap, increment P Corp., GEBCO, USGS, FAO, NPS, NRCAN, GeoBase, IGN, Kadaster NL, Ordnance Survey, Esri Japan, METI, Esri China (Hong Kong), Swisstopo, MapmyIndia, © OpenStreetMap contributors, and the GIS User Community

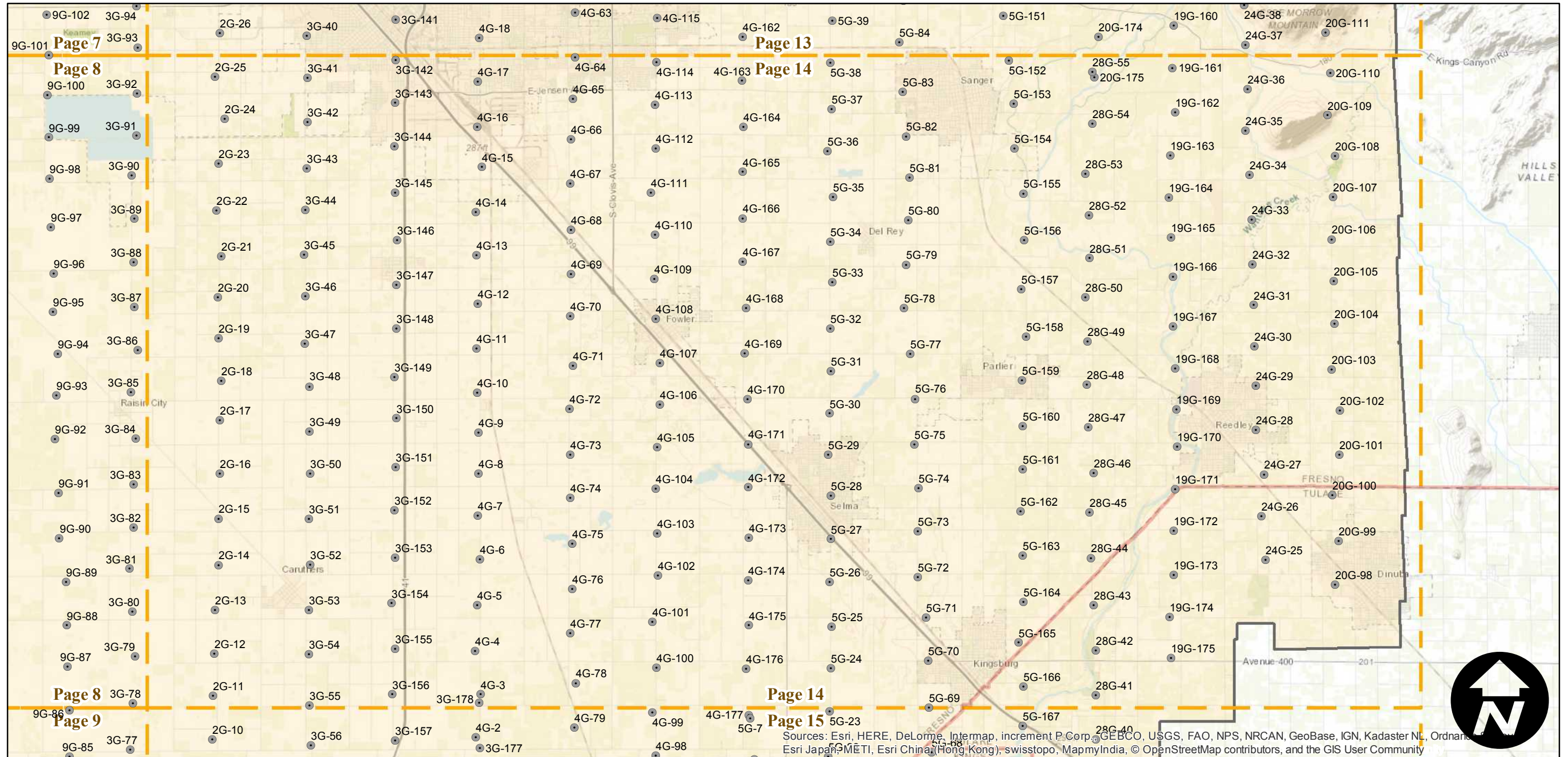
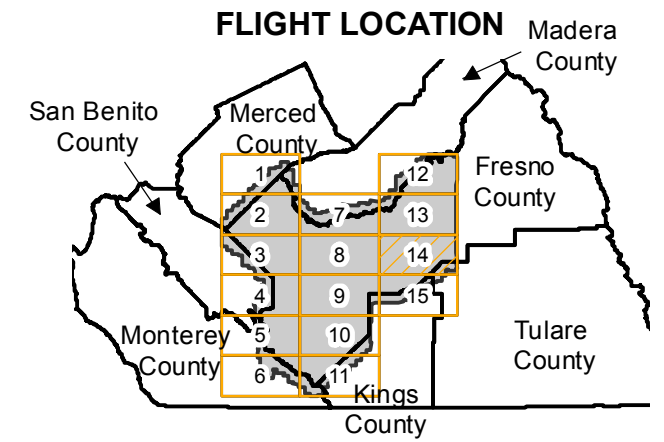
ABI-1950

Counties: Fresno, Merced, Madera, Tulare, Kings, Monterey, San Benito
 Flight date(s): 02-02-1950 to 02-25-1950
 Scale: 1:20,000
 Overlap: 60%

Complete Metadata:
<http://www.library.ucsb.edu/map-imagery-lab/aerial-photography-information>

Note: Coverage of the southeastern portion of Fresno County, east of Interstate 5. Coverage does not include Coalinga. Some photographs are 18" x 18" enlargements (1:10,000) and are stored in Oversize Collection.

- MIL owns frame
- MIL does not own frame



Sources: Esri, HERE, DeLorme, Intermap, increment P Corp., GEBCO, USGS, FAO, NPS, NRCAN, GeoBase, IGN, Kadaster NL, Ordnance Survey, Esri Japan, METI, Esri China (Hong Kong), swisstopo, MapmyIndia, © OpenStreetMap contributors, and the GIS User Community

0 2 4 8 Miles

Index to Aerial Photography
 Page 14 of 15

Scale of this index: 1:150,000

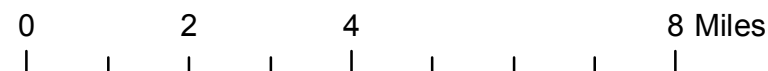
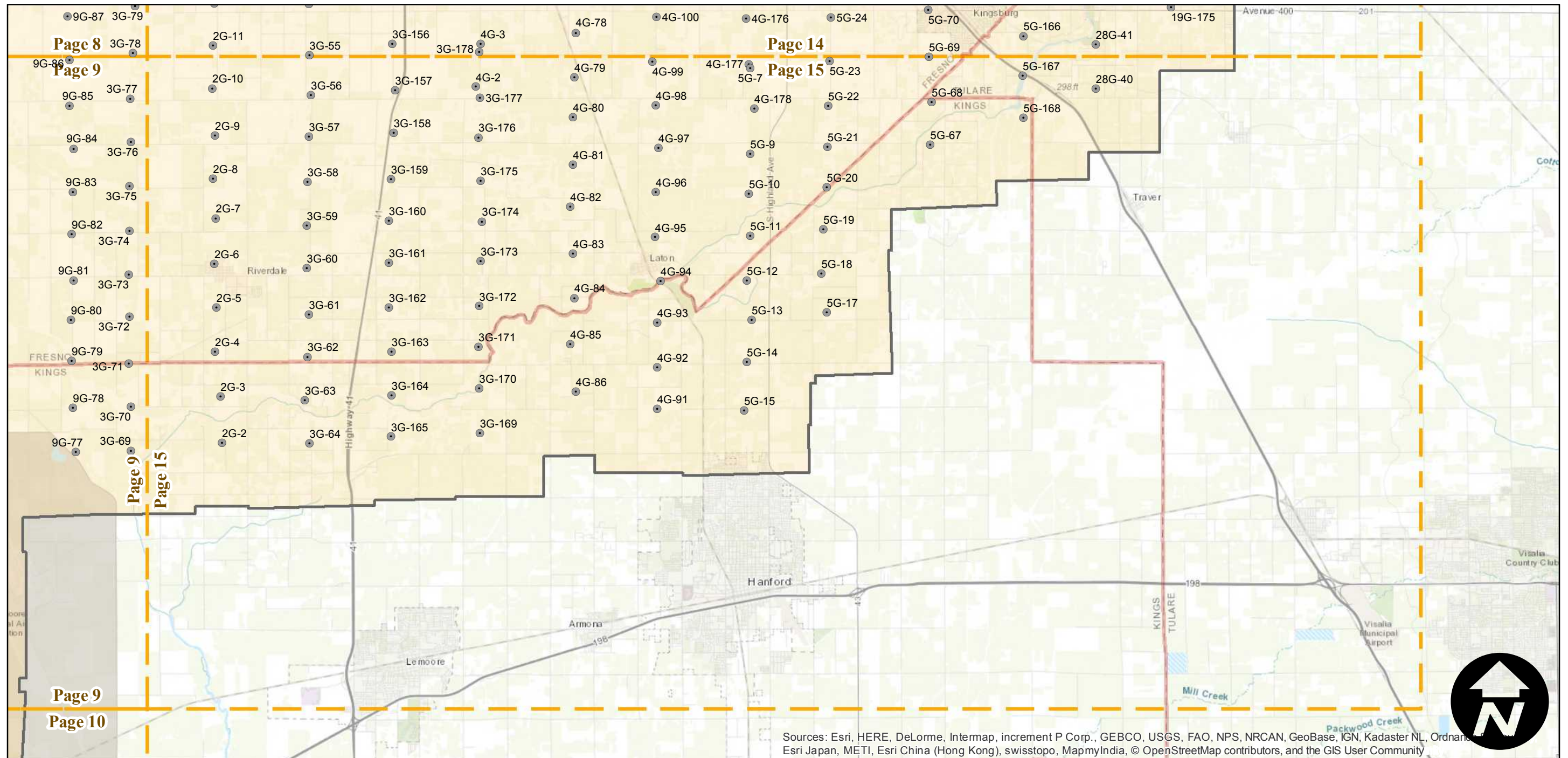
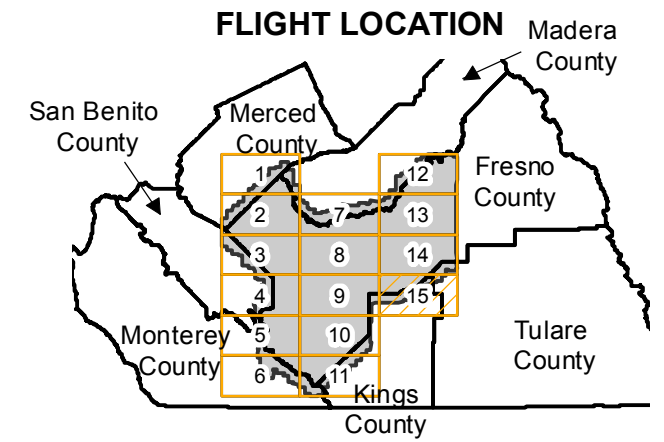
ABI-1950

Counties: Fresno, Merced, Madera, Tulare, Kings, Monterey, San Benito
 Flight date(s): 02-02-1950 to 02-25-1950
 Scale: 1:20,000
 Overlap: 60%

Complete Metadata:
<http://www.library.ucsb.edu/map-imagery-lab/aerial-photography-information>

Note: Coverage of the southeastern portion of Fresno County, east of Interstate 5. Coverage does not include Coalinga. Some photographs are 18" x 18" enlargements (1:10,000) and are stored in Oversize Collection.

- MIL owns frame
- MIL does not own frame



Sources: Esri, HERE, DeLorme, Intermap, increment P Corp., GEBCO, USGS, FAO, NPS, NRCAN, GeoBase, IGN, Kadaster NL, Ordnance Survey, Esri Japan, METI, Esri China (Hong Kong), swisstopo, MapmyIndia, © OpenStreetMap contributors, and the GIS User Community

