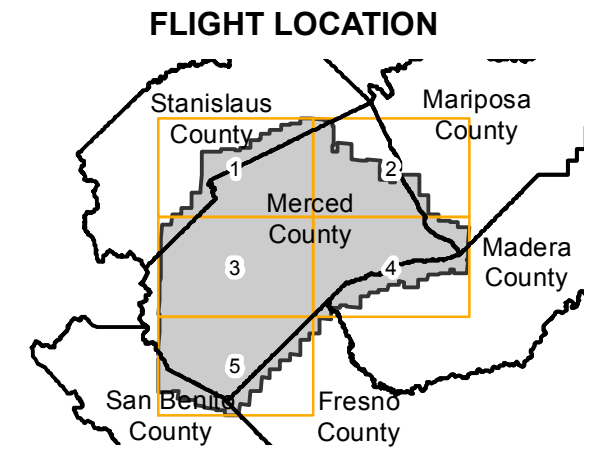


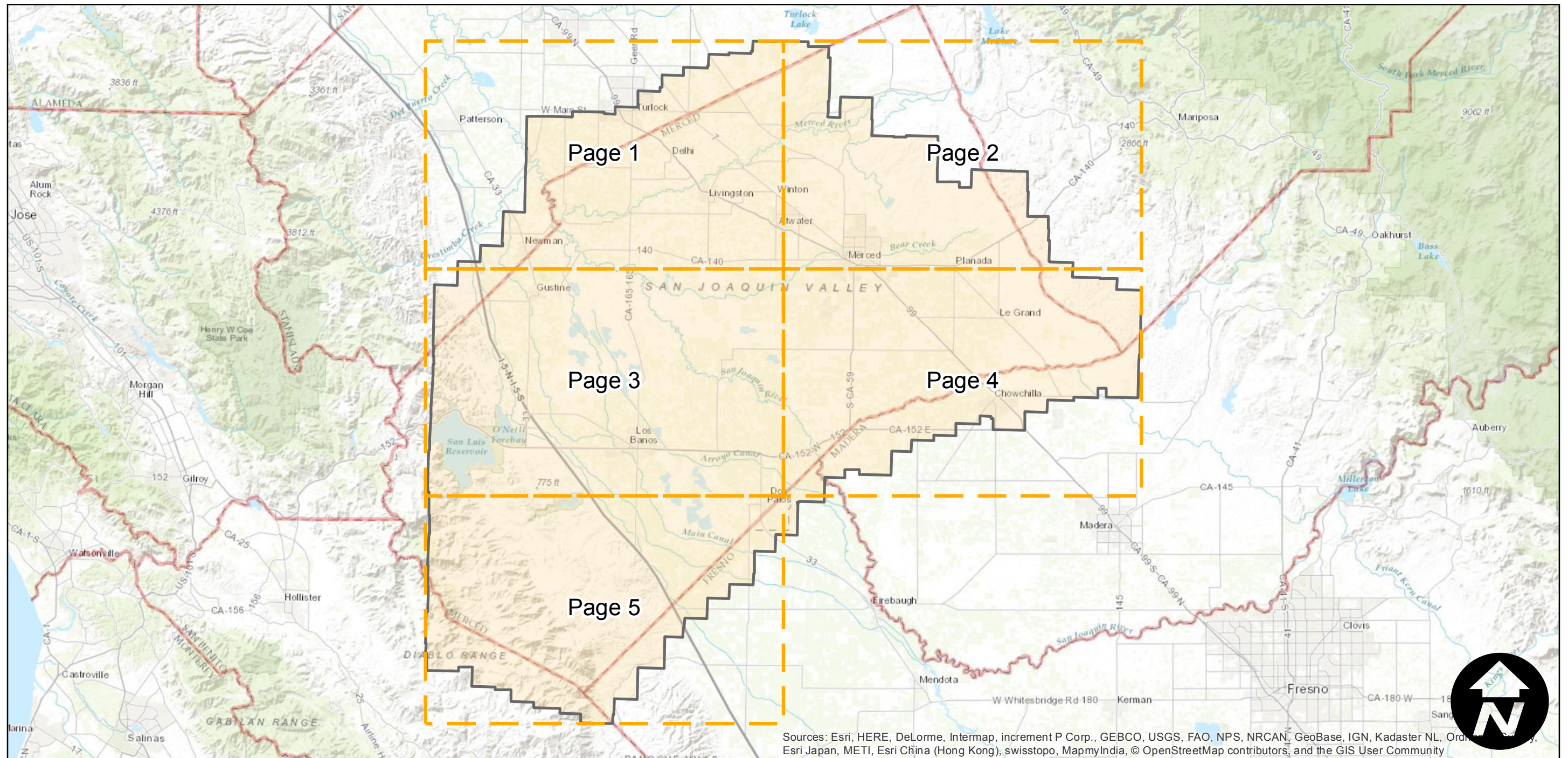
ABF-1957

Counties: Merced, Fresno, San Benito, Stanislaus, Madera, Mariposa
Flight date(s): 04-09-1957 to 07-25-1957
Scale: 1:20,000
Overlap: 60%

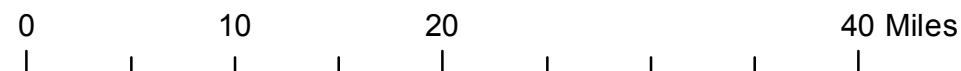
Note: Merced County. Areas covered include Delhi, Livingston, Atwater, Chowchilla, Los Banos, and Newman. Flight coverage extends into surrounding counties.



Complete Metadata:
<http://www.library.ucsb.edu/map-imagery-lab/aerial-photography-information>



Sources: Esri, HERE, DeLorme, Intermap, increment P Corp., GEBCO, USGS, FAO, NPS, NRCAN, GeoBase, IGN, Kadaster NL, Ordnance Survey, Esri Japan, METI, Esri China (Hong Kong), swisstopo, MapmyIndia, © OpenStreetMap contributors, and the GIS User Community



Index to Aerial Photography
Page Key

Scale of this index: 1:585,000

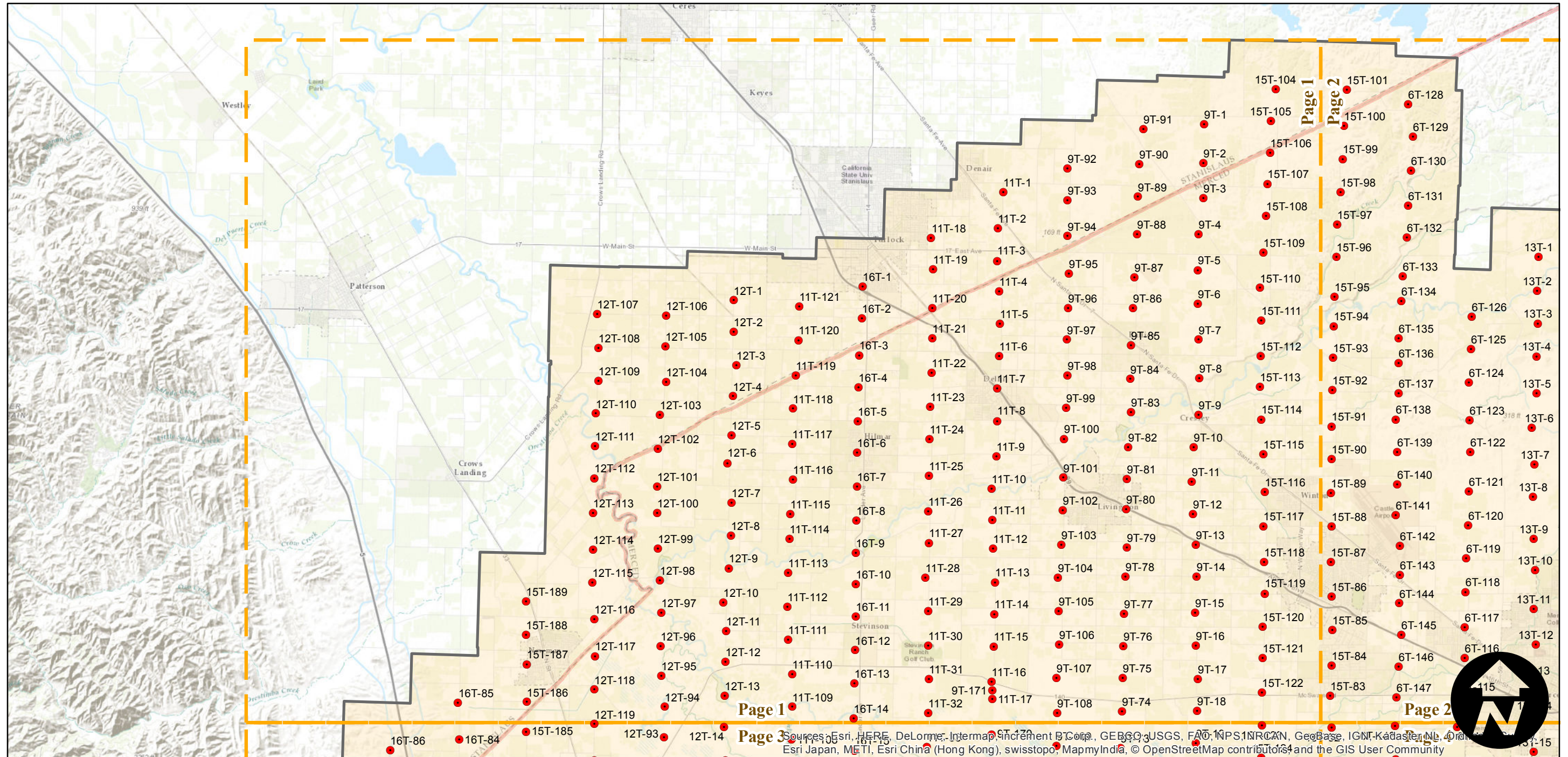
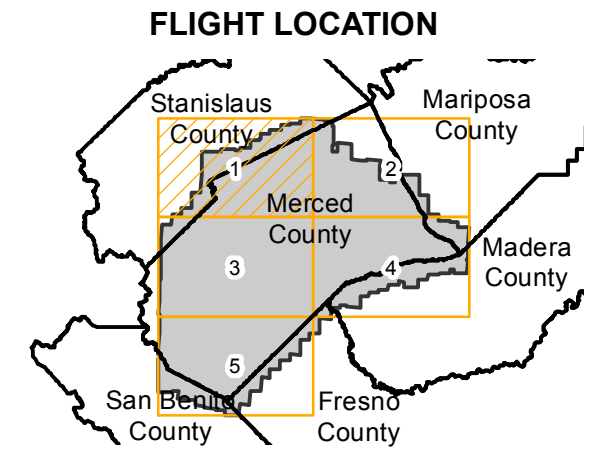
ABF-1957

Counties: Merced, Fresno, San Benito, Stanislaus, Madera, Mariposa
 Flight date(s): 04-09-1957 to 07-25-1957
 Scale: 1:20,000
 Overlap: 60%

Complete Metadata:
<http://www.library.ucsb.edu/map-imagery-lab/aerial-photography-information>

Note: Merced County. Areas covered include Delhi, Livingston, Atwater, Chowchilla, Los Banos, and Newman. Flight coverage extends into surrounding counties.

- MIL owns frame
- MIL does not own frame



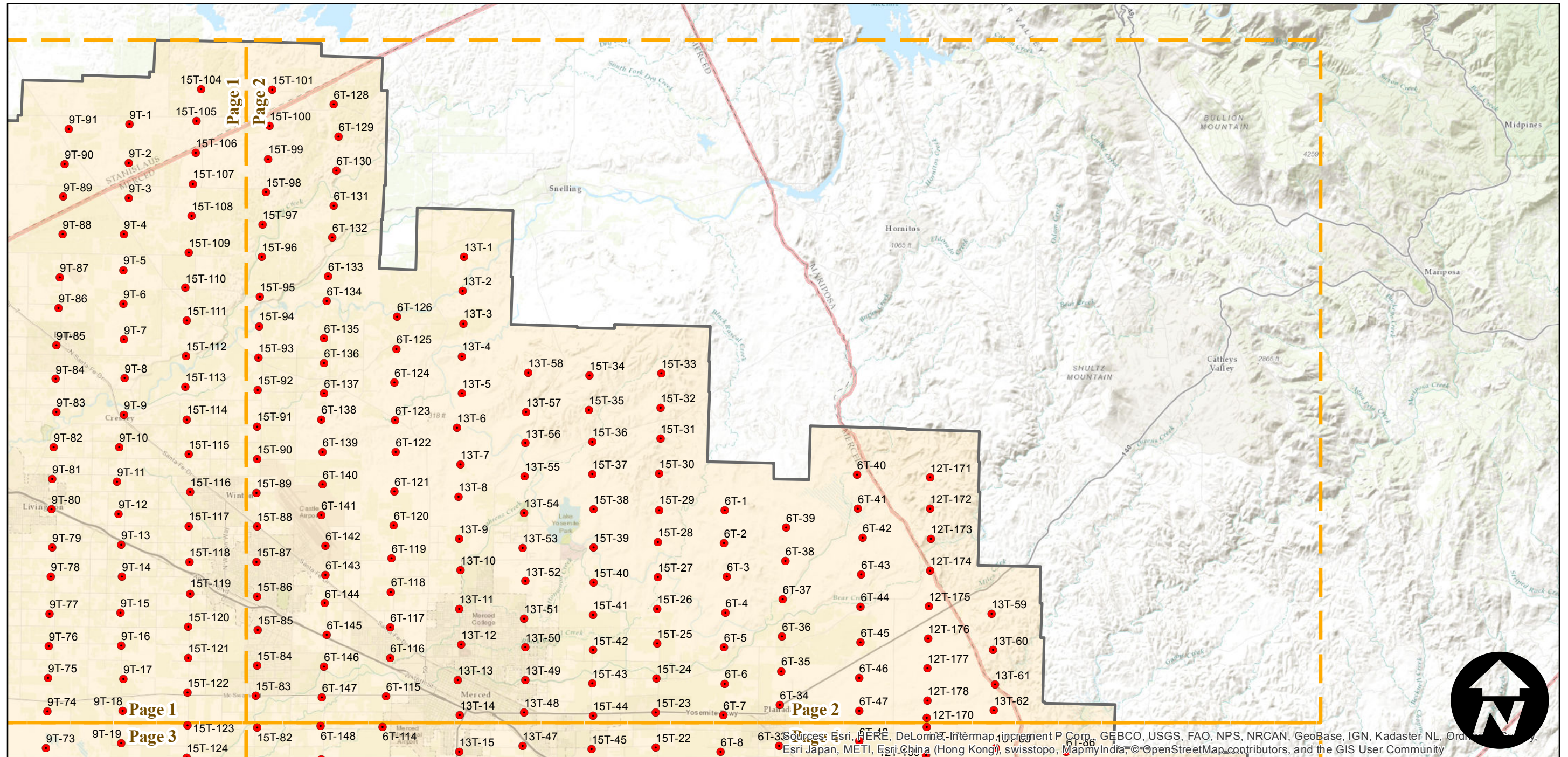
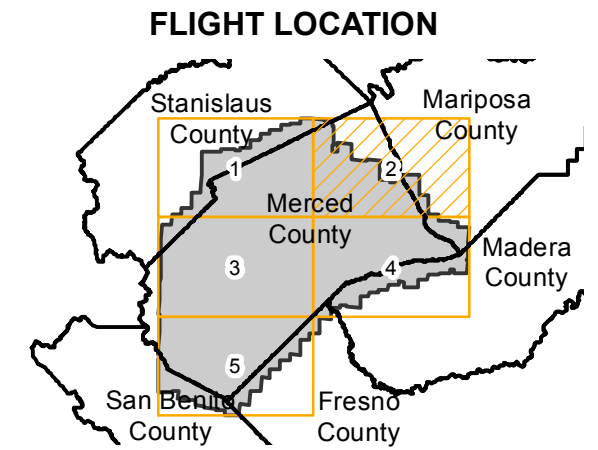
ABF-1957

Counties: Merced, Fresno, San Benito, Stanislaus, Madera, Mariposa
 Flight date(s): 04-09-1957 to 07-25-1957
 Scale: 1:20,000
 Overlap: 60%

Complete Metadata:
<http://www.library.ucsb.edu/map-imagery-lab/aerial-photography-information>

Note: Merced County. Areas covered include Delhi, Livingston, Atwater, Chowchilla, Los Banos, and Newman. Flight coverage extends into surrounding counties.

- MIL owns frame
- MIL does not own frame



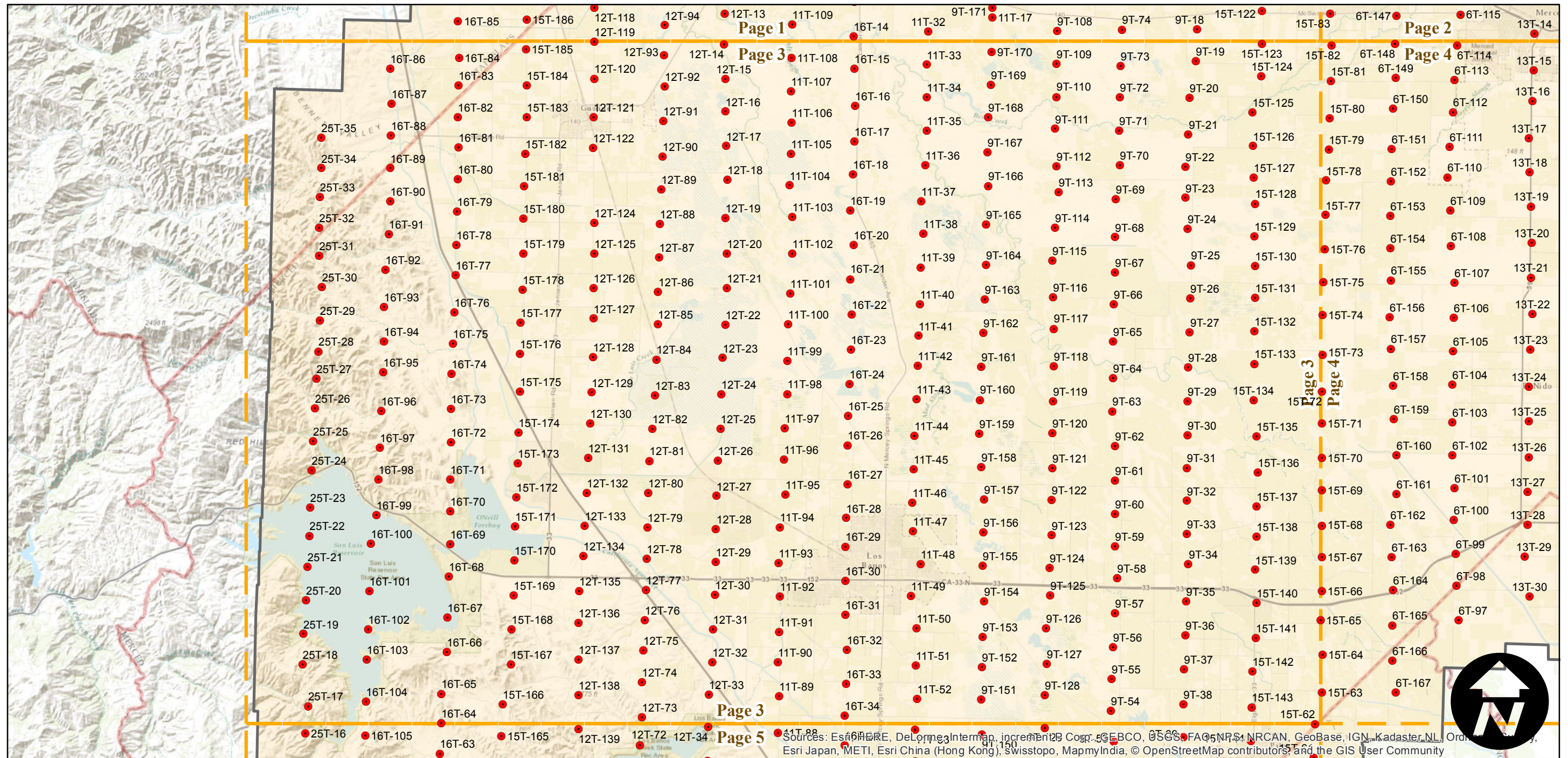
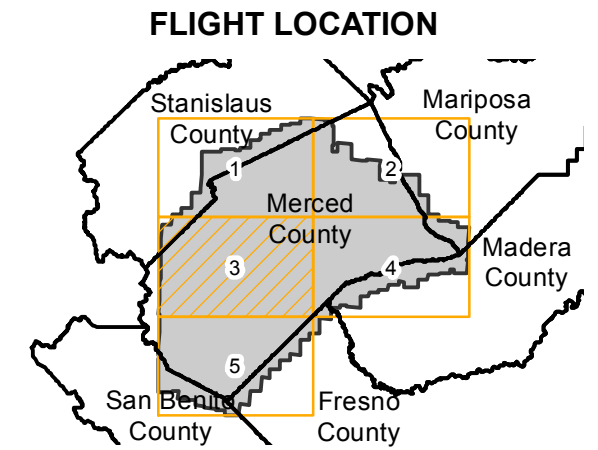
ABF-1957

Counties: Merced, Fresno, San Benito, Stanislaus, Madera, Mariposa
 Flight date(s): 04-09-1957 to 07-25-1957
 Scale: 1:20,000
 Overlap: 60%

Complete Metadata:
<http://www.library.ucsb.edu/map-imagery-lab/aerial-photography-information>

Note: Merced County. Areas covered include Delhi, Livingston, Atwater, Chowchilla, Los Banos, and Newman. Flight coverage extends into surrounding counties.

- MIL owns frame
- MIL does not own frame



Sources: Esri, DeLorme, Intermap, increment P Corp., GEBCO, USGS, FAO, NPS, NRCAN, GeoBase, IGN, Kadaster NL, Ordnance Survey, Esri Japan, METI, Esri China (Hong Kong), Swisstopo, MapmyIndia, © OpenStreetMap contributors, and the GIS User Community

0 4 8 16 Miles

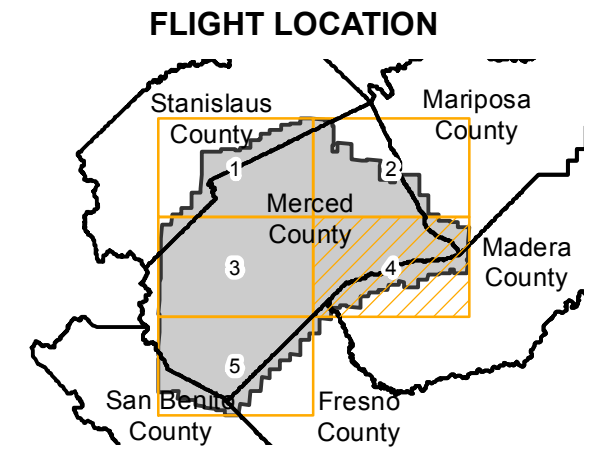
Index to Aerial Photography
 Page 3 of 5

Scale of this index: 1:195,000

ABF-1957

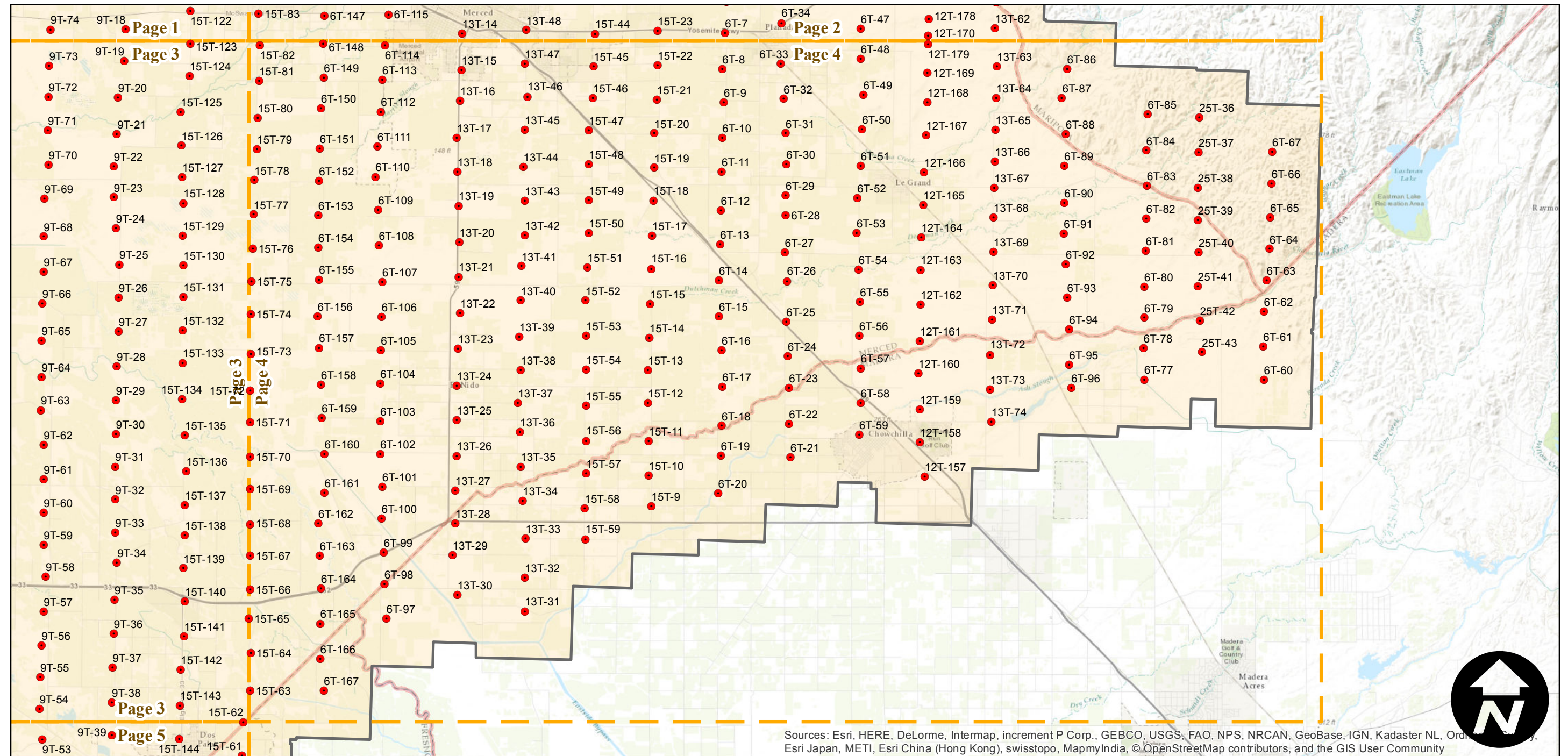
Counties: Merced, Fresno, San Benito, Stanislaus, Madera, Mariposa
 Flight date(s): 04-09-1957 to 07-25-1957
 Scale: 1:20,000
 Overlap: 60%

Note: Merced County. Areas covered include Delhi, Livingston, Atwater, Chowchilla, Los Banos, and Newman. Flight coverage extends into surrounding counties.



Complete Metadata:
<http://www.library.ucsb.edu/map-imagery-lab/aerial-photography-information>

- MIL owns frame
- MIL does not own frame



Sources: Esri, HERE, DeLorme, Intermap, increment P Corp., GEBCO, USGS, FAO, NPS, NRCAN, GeoBase, IGN, Kadaster NL, Ordnance Survey, Esri Japan, METI, Esri China (Hong Kong), swisstopo, MapmyIndia, © OpenStreetMap contributors, and the GIS User Community

0 4 8 16 Miles

Index to Aerial Photography
 Page 4 of 5

Scale of this index: 1:195,000



ABF-1957

Counties: Merced, Fresno, San Benito, Stanislaus, Madera, Mariposa
 Flight date(s): 04-09-1957 to 07-25-1957
 Scale: 1:20,000
 Overlap: 60%

Complete Metadata:
<http://www.library.ucsb.edu/map-imagery-lab/aerial-photography-information>

Note: Merced County. Areas covered include Delhi, Livingston, Atwater, Chowchilla, Los Banos, and Newman. Flight coverage extends into surrounding counties.

- MIL owns frame
- MIL does not own frame

