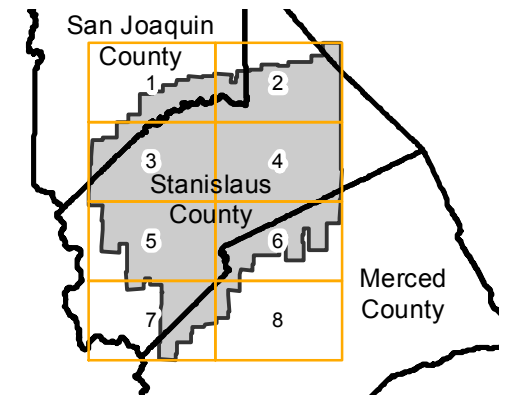


ABE-1957

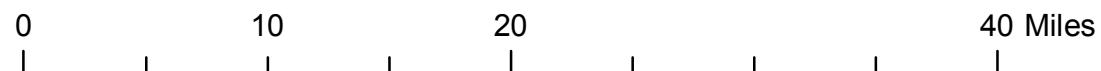
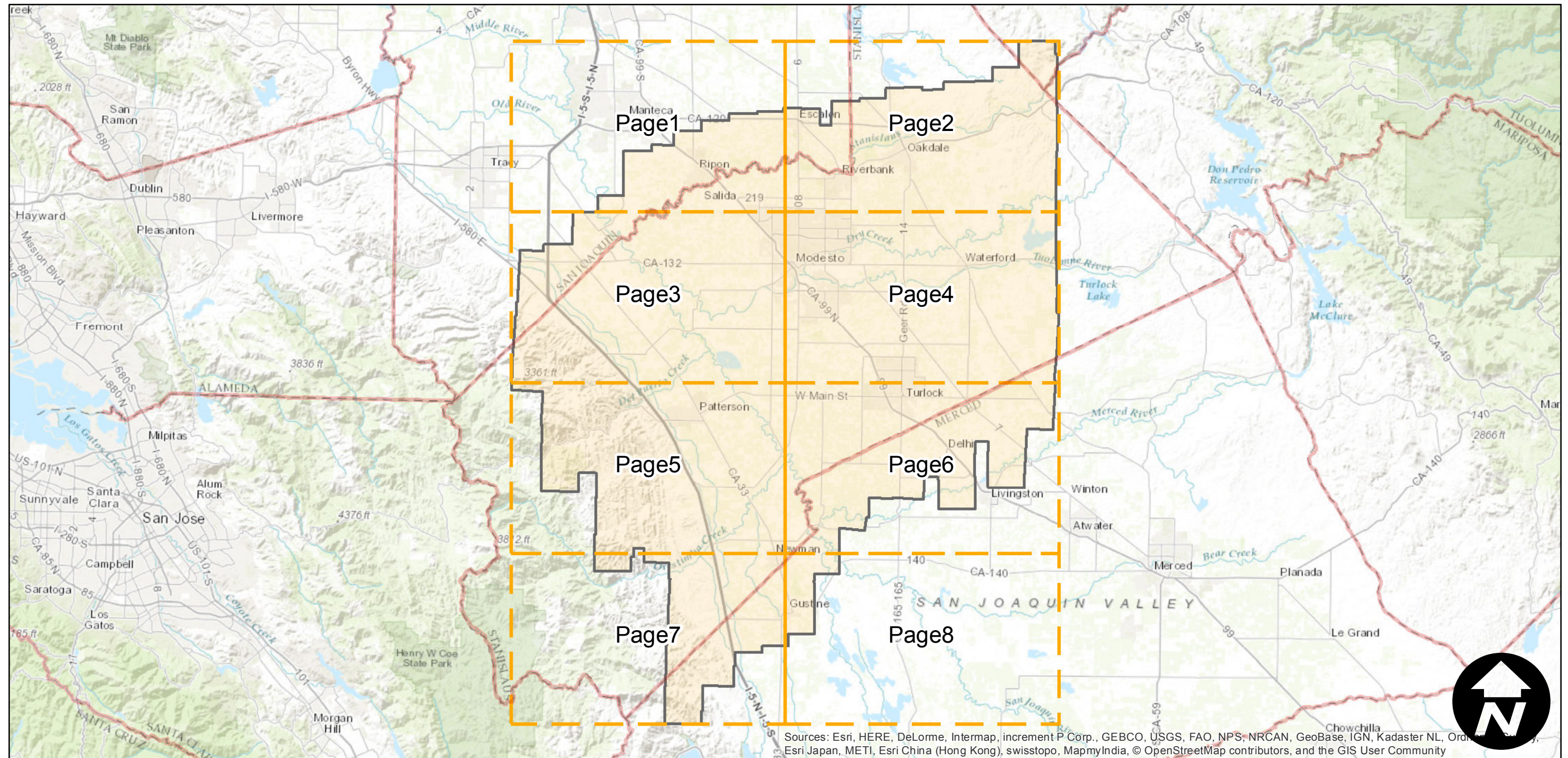
Counties: Stanislaus, San Joaquin, Merced
 Flight date(s): 03-22-1957 to 07-31-1957
 Scale: 1:20,000
 Overlap: 60%

Note: Central Stanislaus County from vicinity of Oakdale to vicinity of Newman. Areas covered include Modesto, Turlock, Waterford, Patterson, and Delhi. Flight coverage extends into San Joaquin and Merced counties.

FLIGHT LOCATION



Complete Metadata:
<http://www.library.ucsb.edu/map-imagery-lab/aerial-photography-information>



Index to Aerial Photography
 Page Key

Scale of this index: 1:500,000



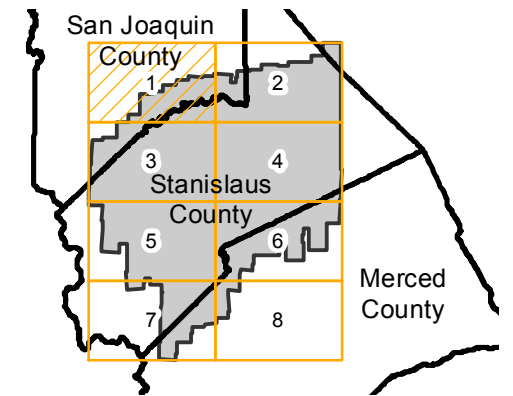
Sources: Esri, HERE, DeLorme, Intermap, increment P Corp., GEBCO, USGS, FAO, NPS, NRCAN, GeoBase, IGN, Kadaster NL, Ordnance Survey, Esri Japan, METI, Esri China (Hong Kong), swisstopo, MapmyIndia, © OpenStreetMap contributors, and the GIS User Community

ABE-1957

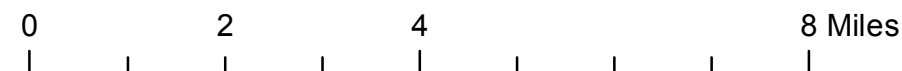
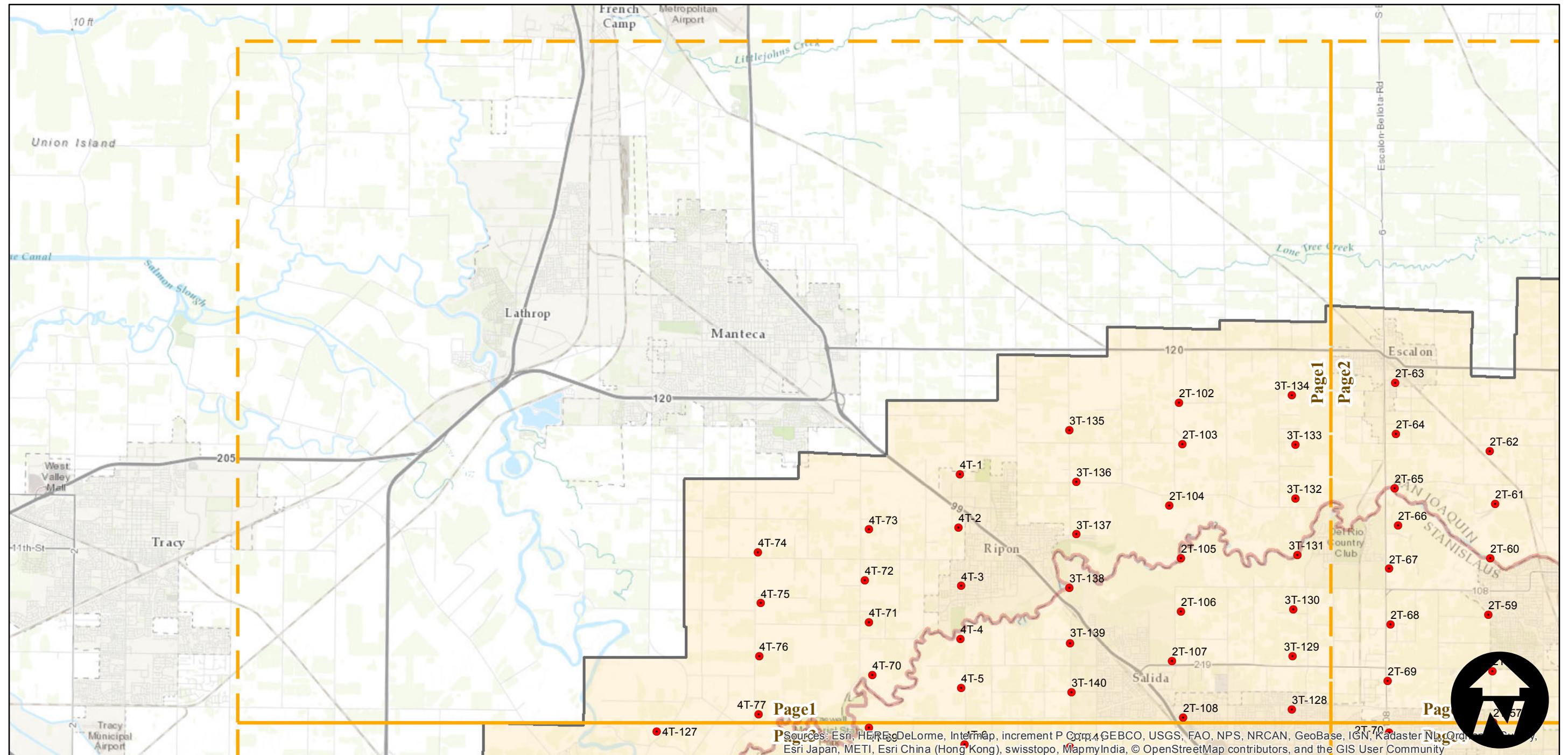
Counties: Stanislaus, San Joaquin, Merced
 Flight date(s): 03-22-1957 to 07-31-1957
 Scale: 1:20,000
 Overlap: 60%

Note: Central Stanislaus County from vicinity of Oakdale to vicinity of Newman. Areas covered include Modesto, Turlock, Waterford, Patterson, and Delhi. Flight coverage extends into San Joaquin and Merced counties.

FLIGHT LOCATION



Complete Metadata:
<http://www.library.ucsb.edu/map-imagery-lab/aerial-photography-information>



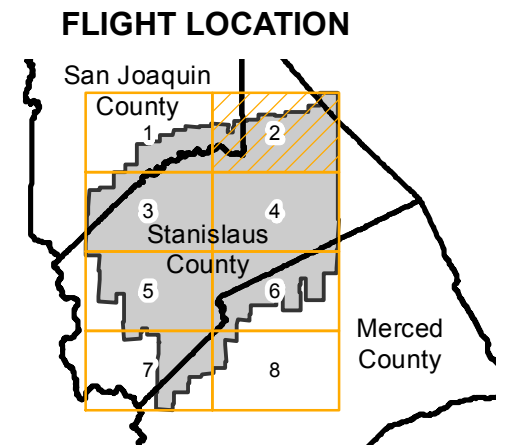
Source: Esri, HERE, DeLorme, Intermap, increment P Corp., GEBCO, USGS, FAO, NPS, NRCAN, GeoBase, IGN, Kadaster NL, Ordnance Survey, Esri Japan, METI, Esri China (Hong Kong), swisstopo, MapmyIndia, © OpenStreetMap contributors, and the GIS User Community



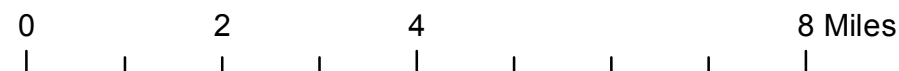
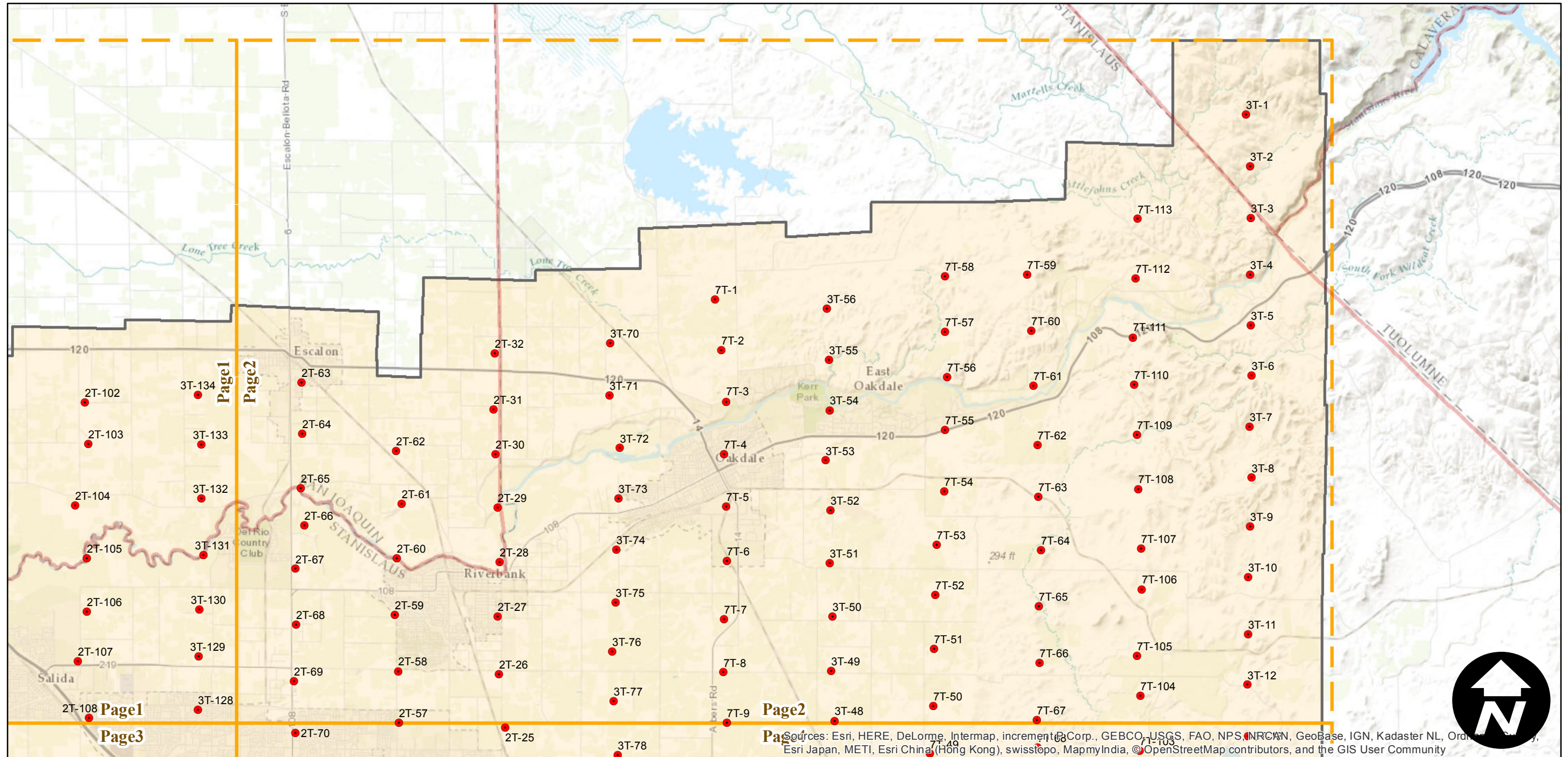
ABE-1957

Counties: Stanislaus, San Joaquin, Merced
 Flight date(s): 03-22-1957 to 07-31-1957
 Scale: 1:20,000
 Overlap: 60%

Note: Central Stanislaus County from vicinity of Oakdale to vicinity of Newman. Areas covered include Modesto, Turlock, Waterford, Patterson, and Delhi. Flight coverage extends into San Joaquin and Merced counties.



Complete Metadata:
<http://www.library.ucsb.edu/map-imagery-lab/aerial-photography-information>

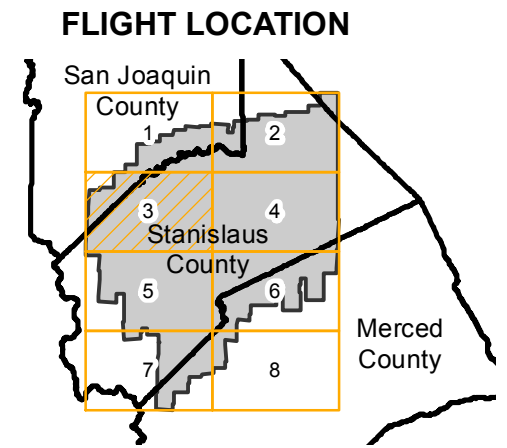


Sources: Esri, HERE, DeLorme, Intermap, increment P Corp., GEBCO, USGS, FAO, NPS, NRCAN, Geobase, IGN, Kadaster NL, Ordnance Survey, Esri Japan, METI, Esri China (Hong Kong), swisstopo, MapmyIndia, © OpenStreetMap contributors, and the GIS User Community

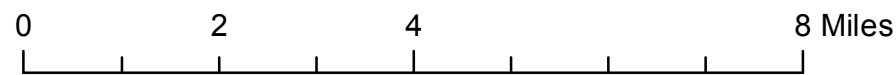
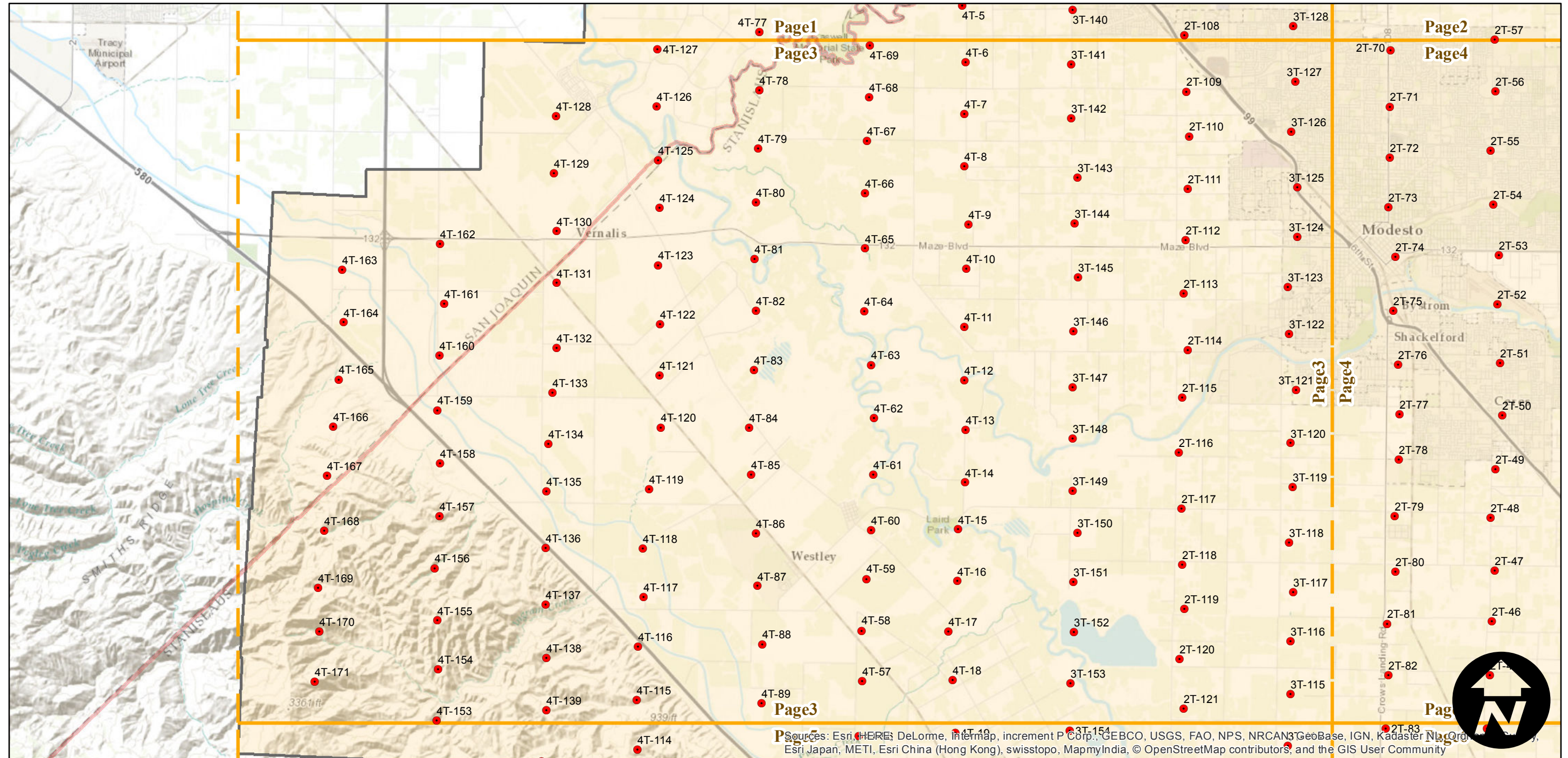
ABE-1957

Counties: Stanislaus, San Joaquin, Merced
 Flight date(s): 03-22-1957 to 07-31-1957
 Scale: 1:20,000
 Overlap: 60%

Note: Central Stanislaus County from vicinity of Oakdale to vicinity of Newman. Areas covered include Modesto, Turlock, Waterford, Patterson, and Delhi. Flight coverage extends into San Joaquin and Merced counties.



Complete Metadata:
<http://www.library.ucsb.edu/map-imagery-lab/aerial-photography-information>



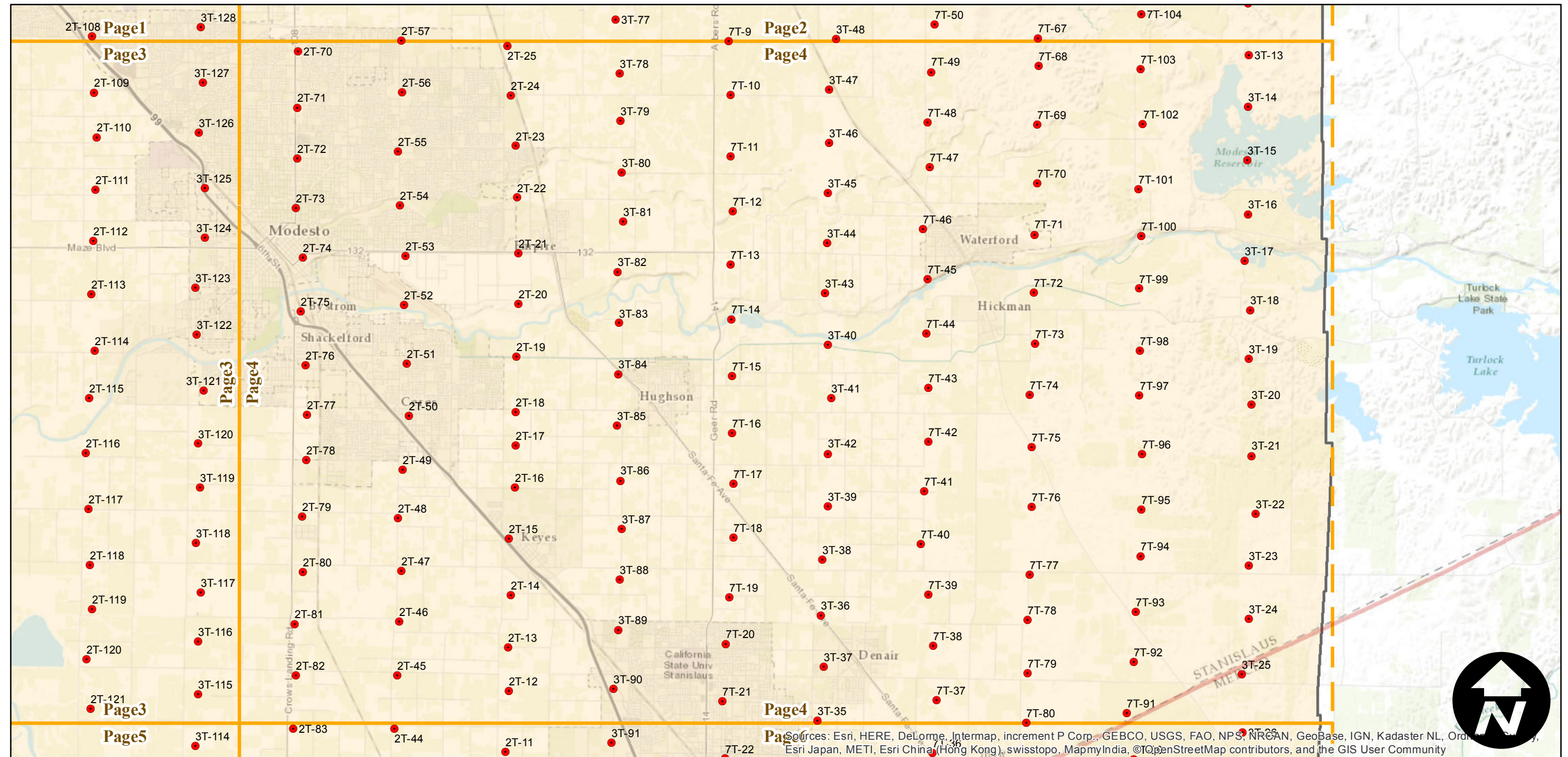
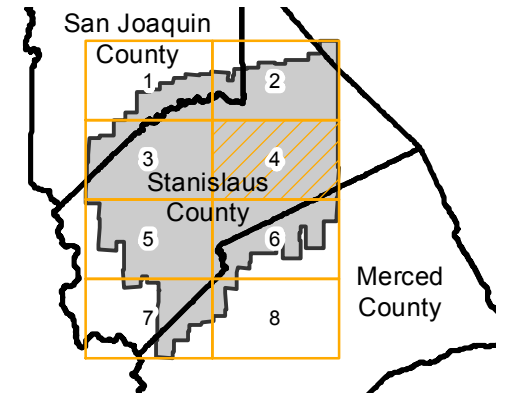
Sources: Esri, HERE, DeLorme, Intermap, increment P Corp., GEBCO, USGS, FAO, NPS, NRCAN, GeoBase, IGN, Kadaster NL, Ordnance Survey, Esri Japan, METI, Esri China (Hong Kong), swisstopo, MapmyIndia, © OpenStreetMap contributors, and the GIS User Community

ABE-1957

Counties: Stanislaus, San Joaquin, Merced
Flight date(s): 03-22-1957 to 07-31-1957
Scale: 1:20,000
Overlap: 60%

Note: Central Stanislaus County from vicinity of Oakdale to vicinity of Newman. Areas covered include Modesto, Turlock, Waterford, Patterson, and Delhi. Flight coverage extends into San Joaquin and Merced counties.

FLIGHT LOCATION



0 2 4 8 Miles

Index to Aerial Photography
Page 4 of 8

Scale of this index: 1:125,000

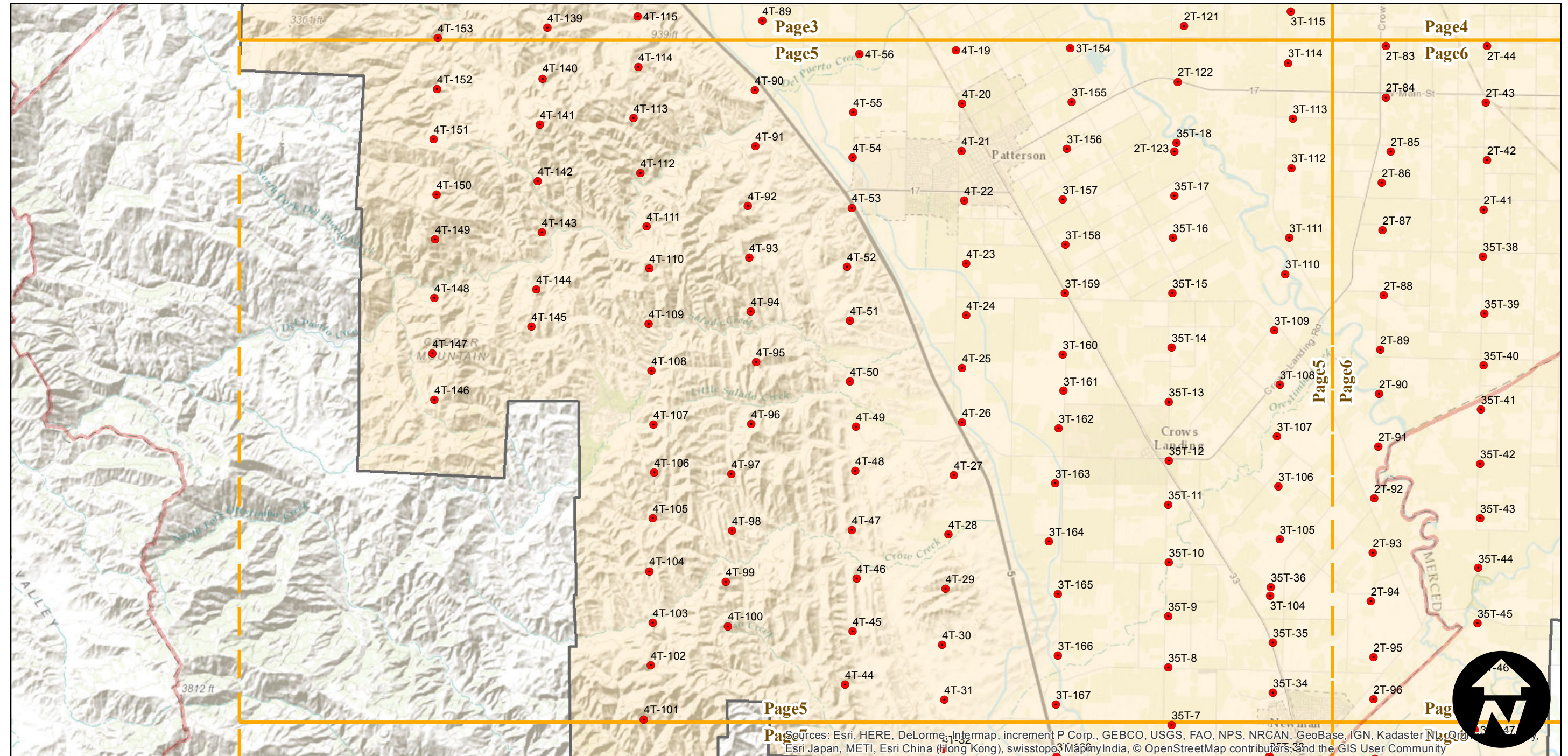
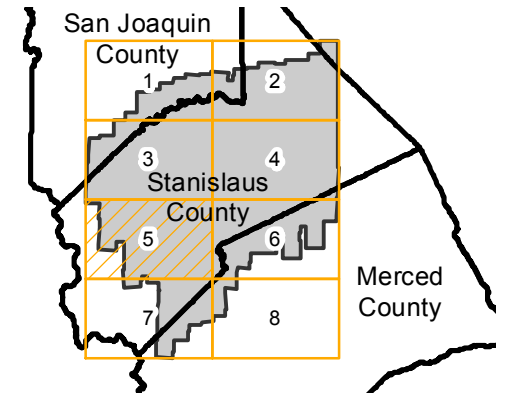
Sources: Esri, HERE, DeLorme, Intermap, increment P Corp., GEBCO, USGS, FAO, NPS, NRCAN, GeoBase, IGN, Kadaster NL, Ordnance Survey, Esri Japan, METI, Esri China (Hong Kong), swisstopo, MapmyIndia, ©OpenStreetMap contributors, and the GIS User Community

ABE-1957

Counties: Stanislaus, San Joaquin, Merced
 Flight date(s): 03-22-1957 to 07-31-1957
 Scale: 1:20,000
 Overlap: 60%

Note: Central Stanislaus County from vicinity of Oakdale to vicinity of Newman. Areas covered include Modesto, Turlock, Waterford, Patterson, and Delhi. Flight coverage extends into San Joaquin and Merced counties.

FLIGHT LOCATION



0 2 4 8 Miles

Index to Aerial Photography
 Page 5 of 8

Scale of this index: 1:125,000

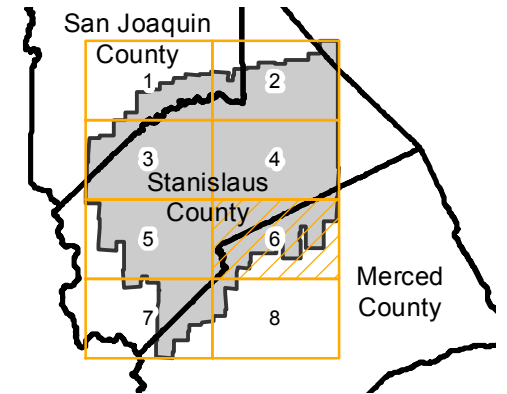
Sources: Esri, HERE, DeLorme, Intermap, increment P Corp., GEBCO, USGS, FAO, NPS, NRCAN, GeoBase, IGN, Kadaster NL, Ordnance Survey, Esri Japan, METI, Esri China (Hong Kong), swisstopo, Mapbox India, © OpenStreetMap contributors, and the GIS User Community

ABE-1957

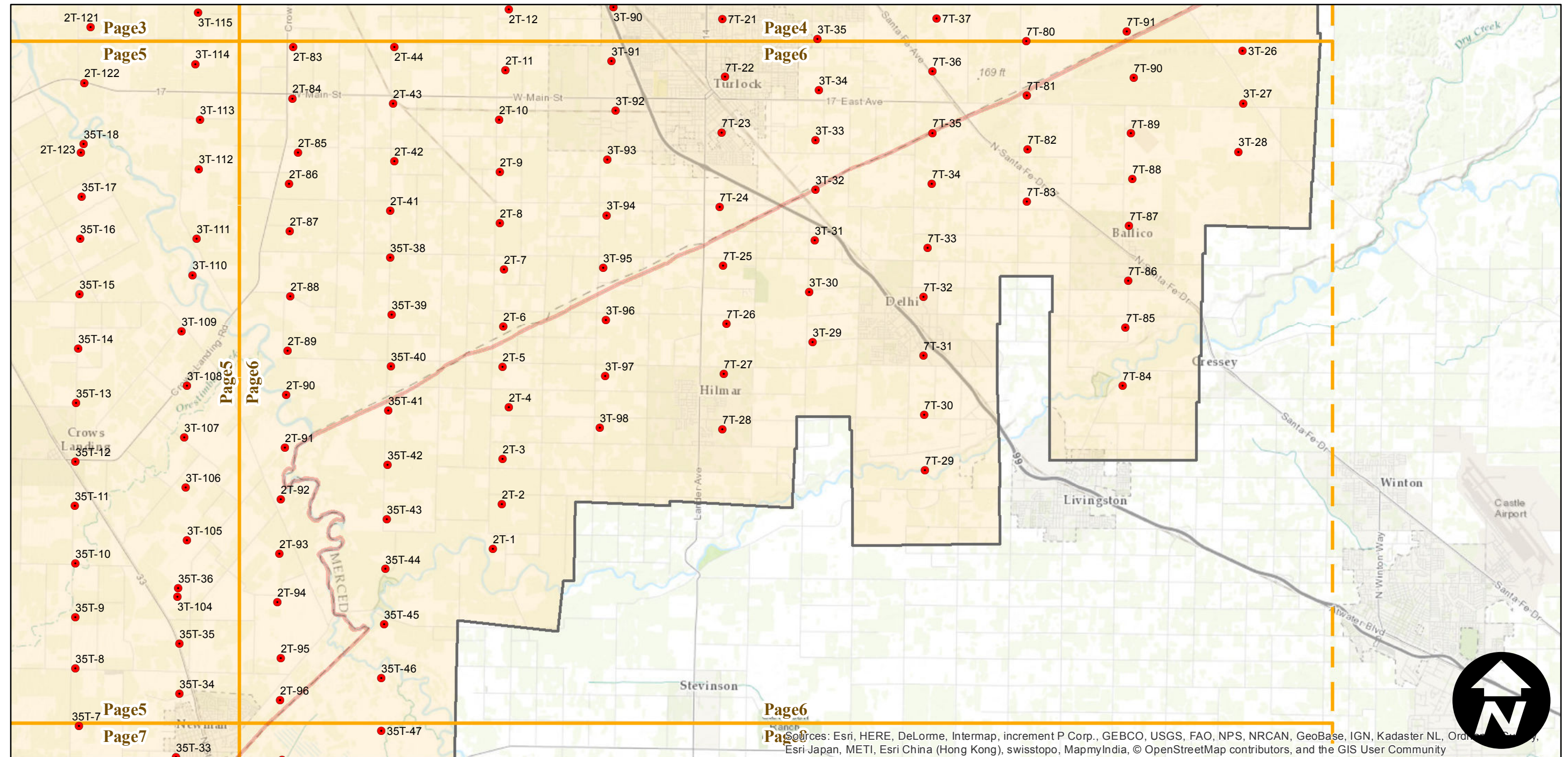
Counties: Stanislaus, San Joaquin, Merced
 Flight date(s): 03-22-1957 to 07-31-1957
 Scale: 1:20,000
 Overlap: 60%

Note: Central Stanislaus County from vicinity of Oakdale to vicinity of Newman. Areas covered include Modesto, Turlock, Waterford, Patterson, and Delhi. Flight coverage extends into San Joaquin and Merced counties.

FLIGHT LOCATION



Complete Metadata:
<http://www.library.ucsb.edu/map-imagery-lab/aerial-photography-information>



0 2 4 8 Miles

Index to Aerial Photography
 Page 6 of 8

Scale of this index: 1:125,000

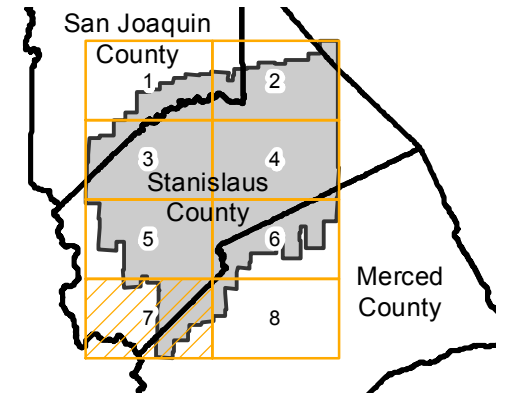
Sources: Esri, HERE, DeLorme, Intermap, increment P Corp., GEBCO, USGS, FAO, NPS, NRCAN, GeoBase, IGN, Kadaster NL, Ordnance Survey, Esri Japan, METI, Esri China (Hong Kong), swisstopo, MapmyIndia, © OpenStreetMap contributors, and the GIS User Community

ABE-1957

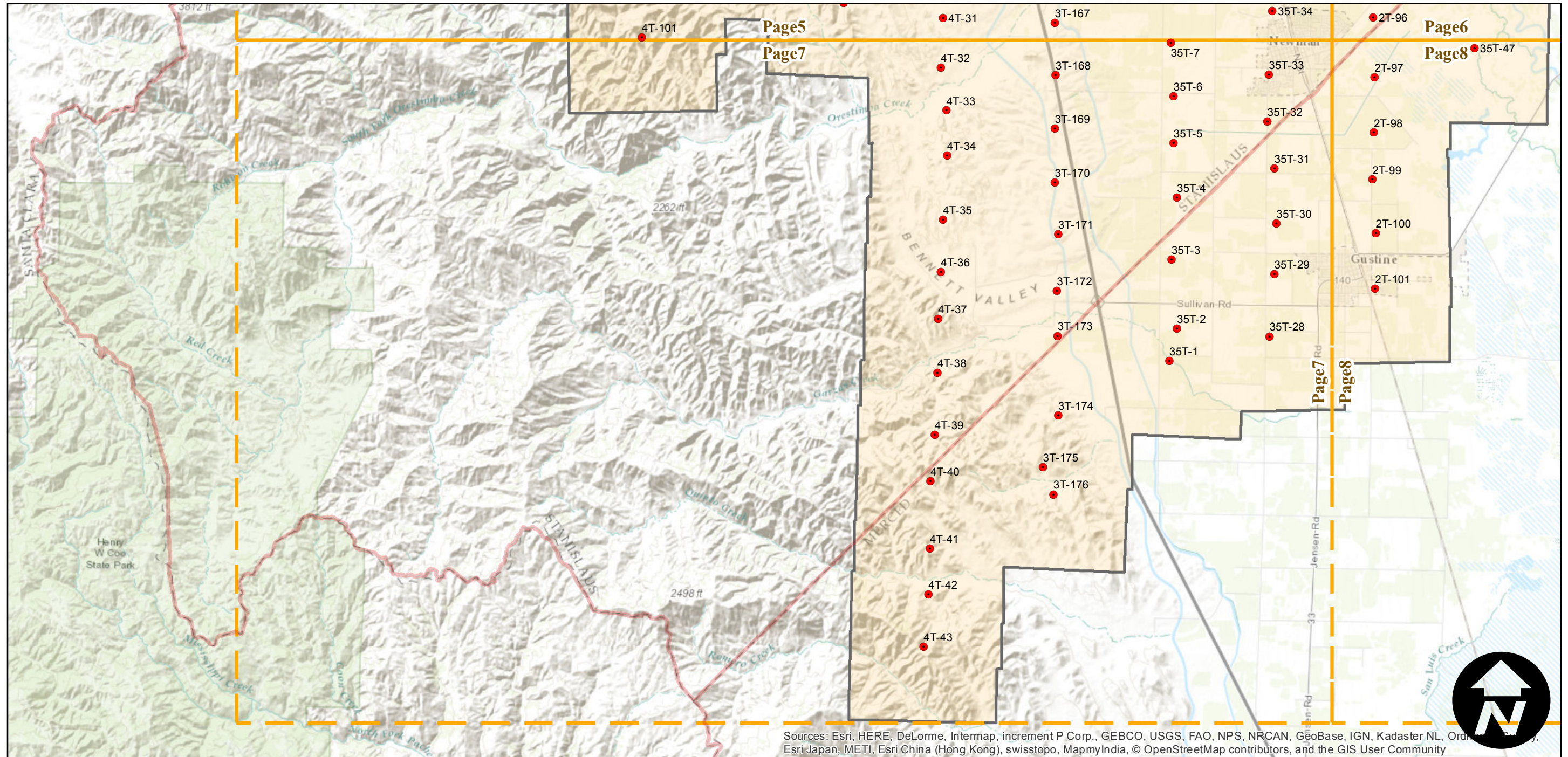
Counties: Stanislaus, San Joaquin, Merced
 Flight date(s): 03-22-1957 to 07-31-1957
 Scale: 1:20,000
 Overlap: 60%

Note: Central Stanislaus County from vicinity of Oakdale to vicinity of Newman. Areas covered include Modesto, Turlock, Waterford, Patterson, and Delhi. Flight coverage extends into San Joaquin and Merced counties.

FLIGHT LOCATION



Complete Metadata:
<http://www.library.ucsb.edu/map-imagery-lab/aerial-photography-information>



Sources: Esri, HERE, DeLorme, Intermap, increment P Corp., GEBCO, USGS, FAO, NPS, NRCAN, GeoBase, IGN, Kadaster NL, Ordnance Survey, Esri Japan, METI, Esri China (Hong Kong), swisstopo, MapmyIndia, © OpenStreetMap contributors, and the GIS User Community

0 2 4 8 Miles

Index to Aerial Photography
 Page 7 of 8

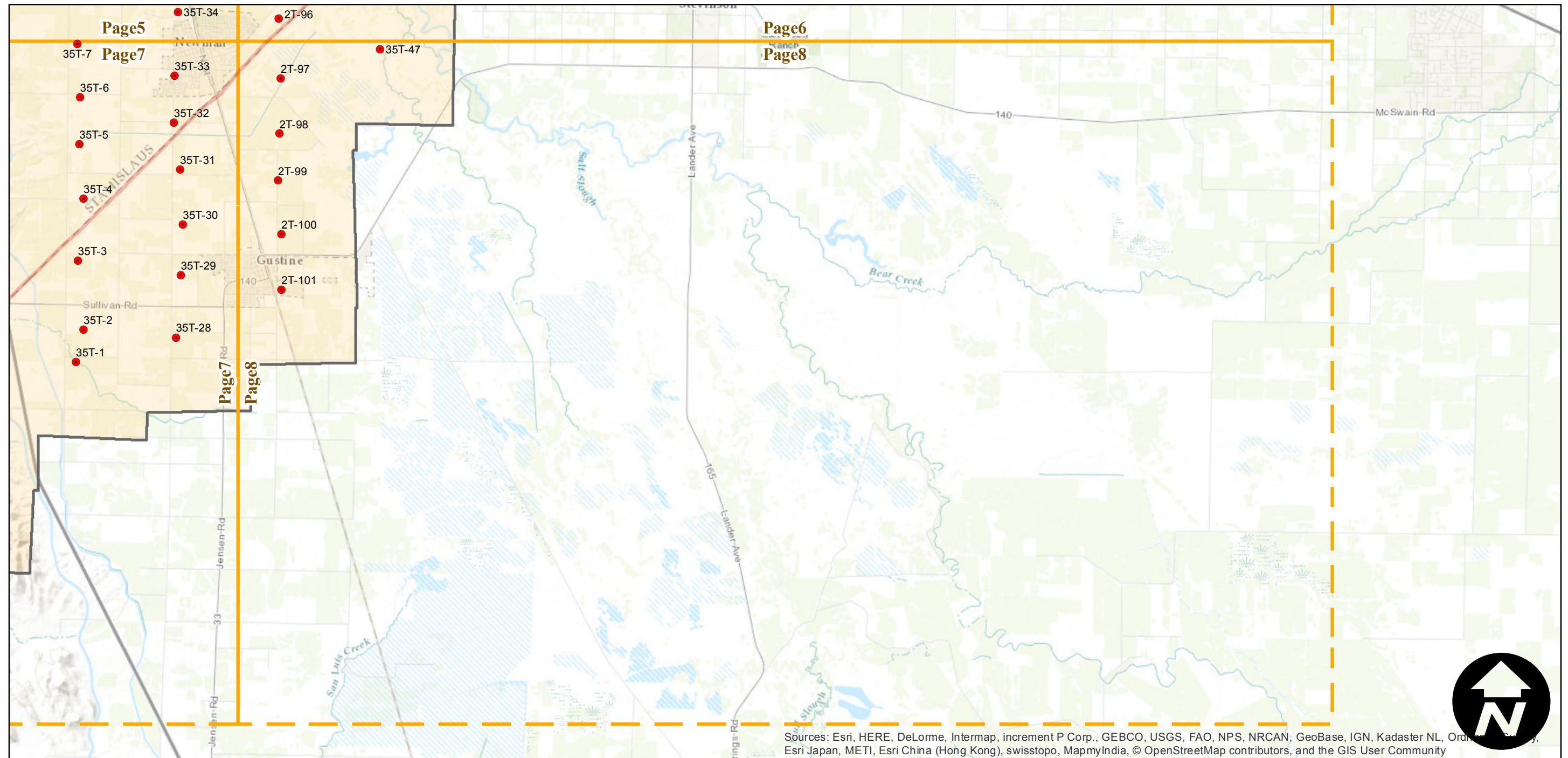
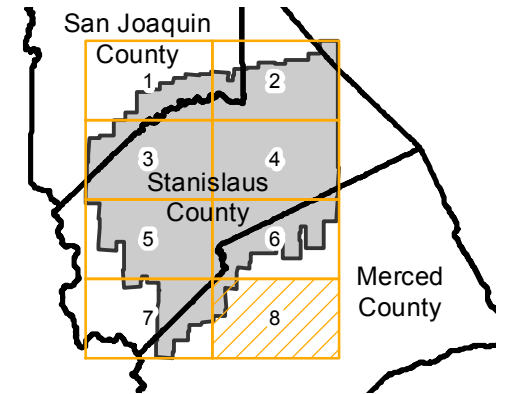
Scale of this index: 1:125,000

ABE-1957

Counties: Stanislaus, San Joaquin, Merced
Flight date(s): 03-22-1957 to 07-31-1957
Scale: 1:20,000
Overlap: 60%

Note: Central Stanislaus County from vicinity of Oakdale to vicinity of Newman. Areas covered include Modesto, Turlock, Waterford, Patterson, and Delhi. Flight coverage extends into San Joaquin and Merced counties.

FLIGHT LOCATION



Sources: Esri, HERE, DeLorme, Intermap, increment P Corp., GEBCO, USGS, FAO, NPS, NRCAN, GeoBase, IGN, Kadaster NL, Ordnance Survey, Esri Japan, METI, Esri China (Hong Kong), swisstopo, MapmyIndia, © OpenStreetMap contributors, and the GIS User Community

