

# ABD-1937

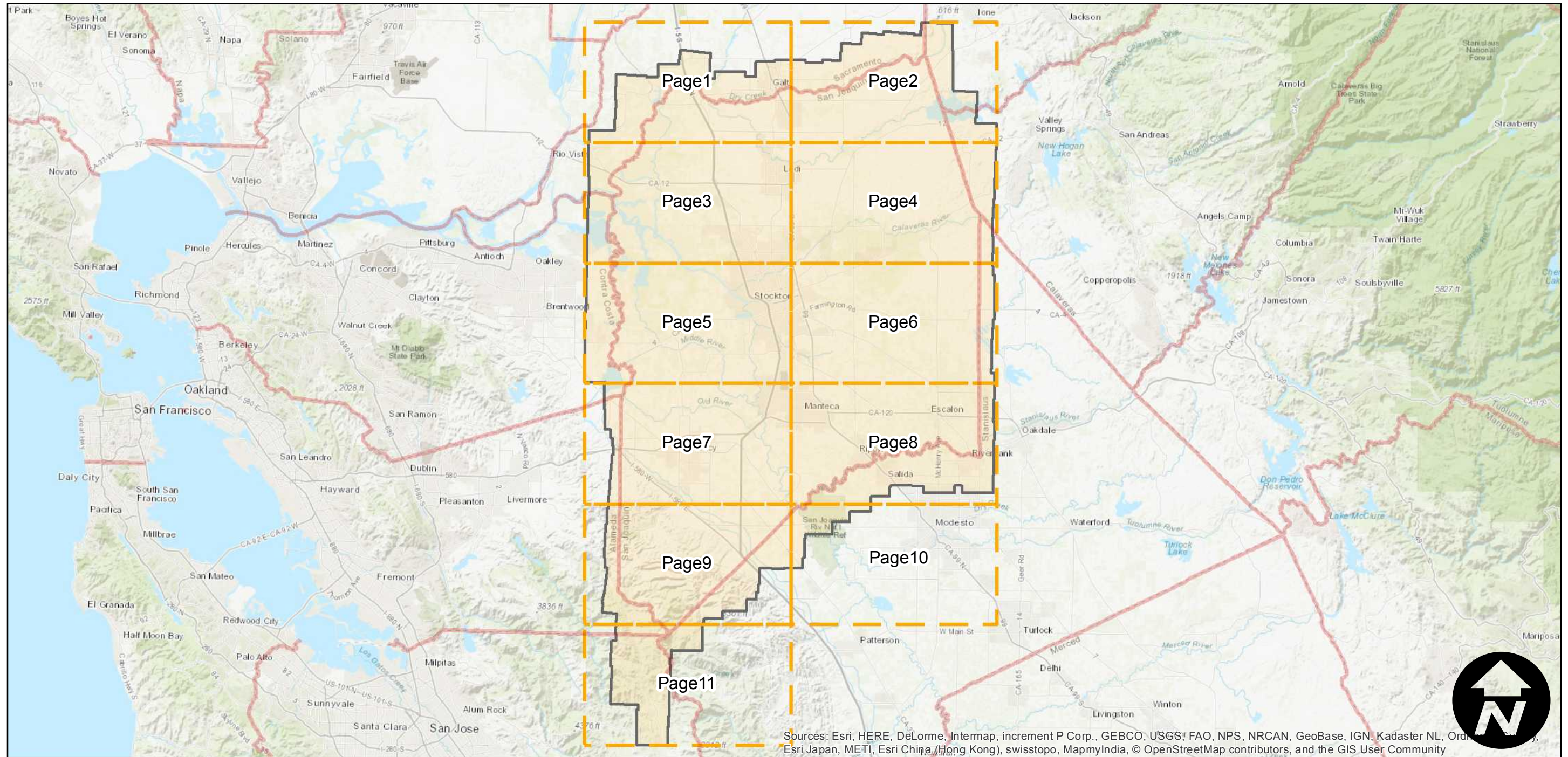
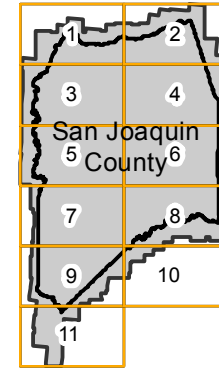
Counties: San Joaquin  
Flight date: 10-20-1937  
Scale: 1:20,000  
Overlap: 60%

Complete Metadata:  
<http://www.library.ucsb.edu/map-imagery-lab/aerial-photography-information>

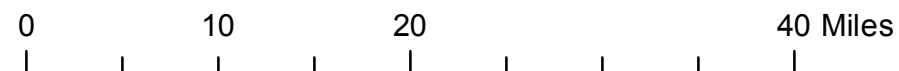
Note: Imagery borrowed from UC Davis; scanned and digitized to add to MIL's collection. Acquired in 2009. Only 5 paper photographs held in MIL's collection.

- MIL owns frame
- MIL does not own frame

## FLIGHT LOCATION



Sources: Esri, HERE, DeLorme, Intermap, increment P Corp., GEBCO, USGS, FAO, NPS, NRCAN, GeoBase, IGN, Kadaster NL, Ordnance Survey, Esri Japan, METI, Esri China (Hong Kong), swisstopo, MapmyIndia, © OpenStreetMap contributors, and the GIS User Community



Index to Aerial Photography  
Page Key

Scale of this index: 1:634,000



# ABD-1937

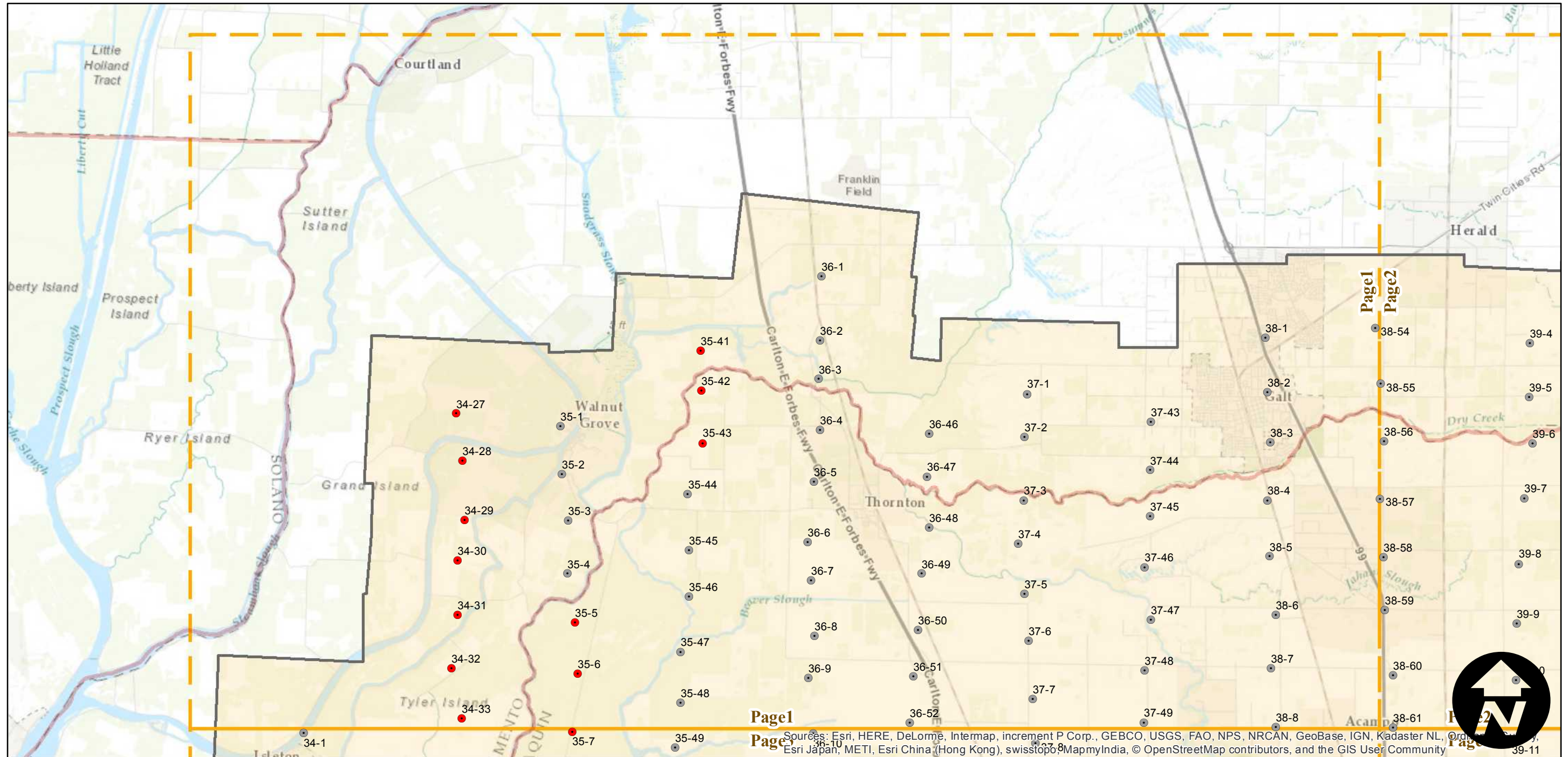
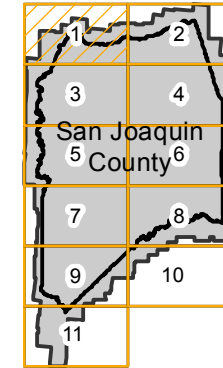
Counties: San Joaquin  
 Flight date: 10-20-1937  
 Scale: 1:20,000  
 Overlap: 60%

Complete Metadata:  
<http://www.library.ucsb.edu/map-imagery-lab/aerial-photography-information>

Note: Imagery borrowed from UC Davis; scanned and digitized to add to MIL's collection. Acquired in 2009. Only 5 paper photographs held in MIL's collection.

- MIL owns frame
- MIL does not own frame

## FLIGHT LOCATION



Sources: Esri, HERE, DeLorme, Intermap, increment P Corp., GEBCO, USGS, FAO, NPS, NRCAN, GeoBase, IGN, Kadaster NL, Ordnance Survey, Esri Japan, METI, Esri China (Hong Kong), swisstopo, MapmyIndia, © OpenStreetMap contributors, and the GIS User Community

0 2 4 8 Miles

Index to Aerial Photography  
 Page 1 of 11

Scale of this index: 1:110,000



# ABD-1937

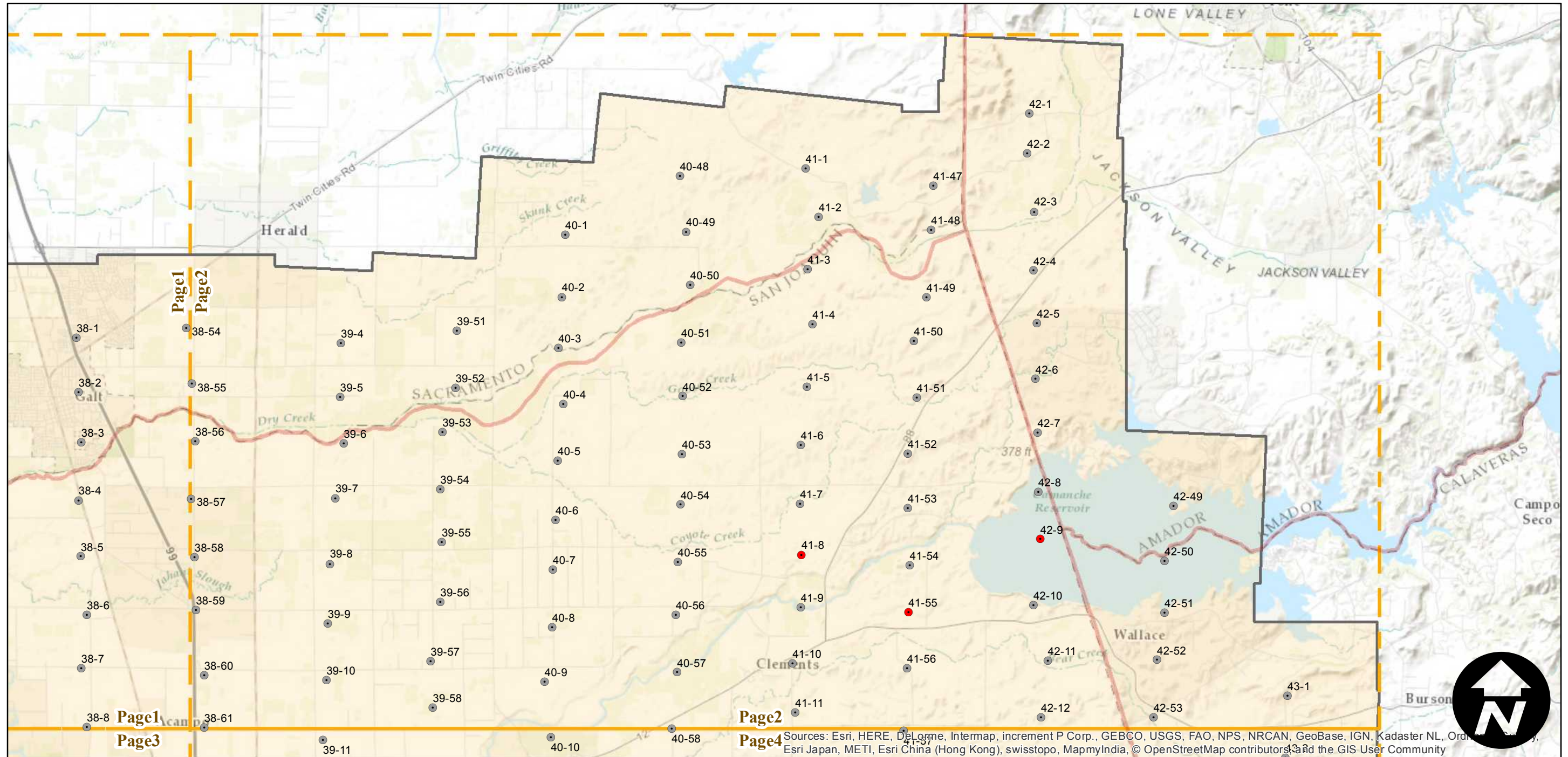
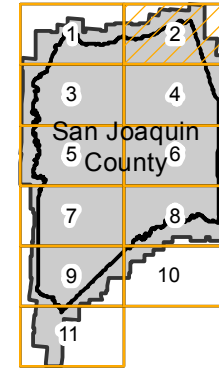
Counties: San Joaquin  
 Flight date: 10-20-1937  
 Scale: 1:20,000  
 Overlap: 60%

Complete Metadata:  
<http://www.library.ucsb.edu/map-imagery-lab/aerial-photography-information>

Note: Imagery borrowed from UC Davis; scanned and digitized to add to MIL's collection. Acquired in 2009. Only 5 paper photographs held in MIL's collection.

- MIL owns frame
- MIL does not own frame

## FLIGHT LOCATION



0 2 4 8 Miles

Index to Aerial Photography  
 Page 2 of 11

Scale of this index: 1:110,000

Sources: Esri, HERE, DeLorme, Intermap, increment P Corp., GEBCO, USGS, FAO, NPS, NRCAN, GeoBase, IGN, Kadaster NL, Ordnance Survey, Esri Japan, METI, Esri China (Hong Kong), swisstopo, MapmyIndia, © OpenStreetMap contributors, and the GIS User Community



# ABD-1937

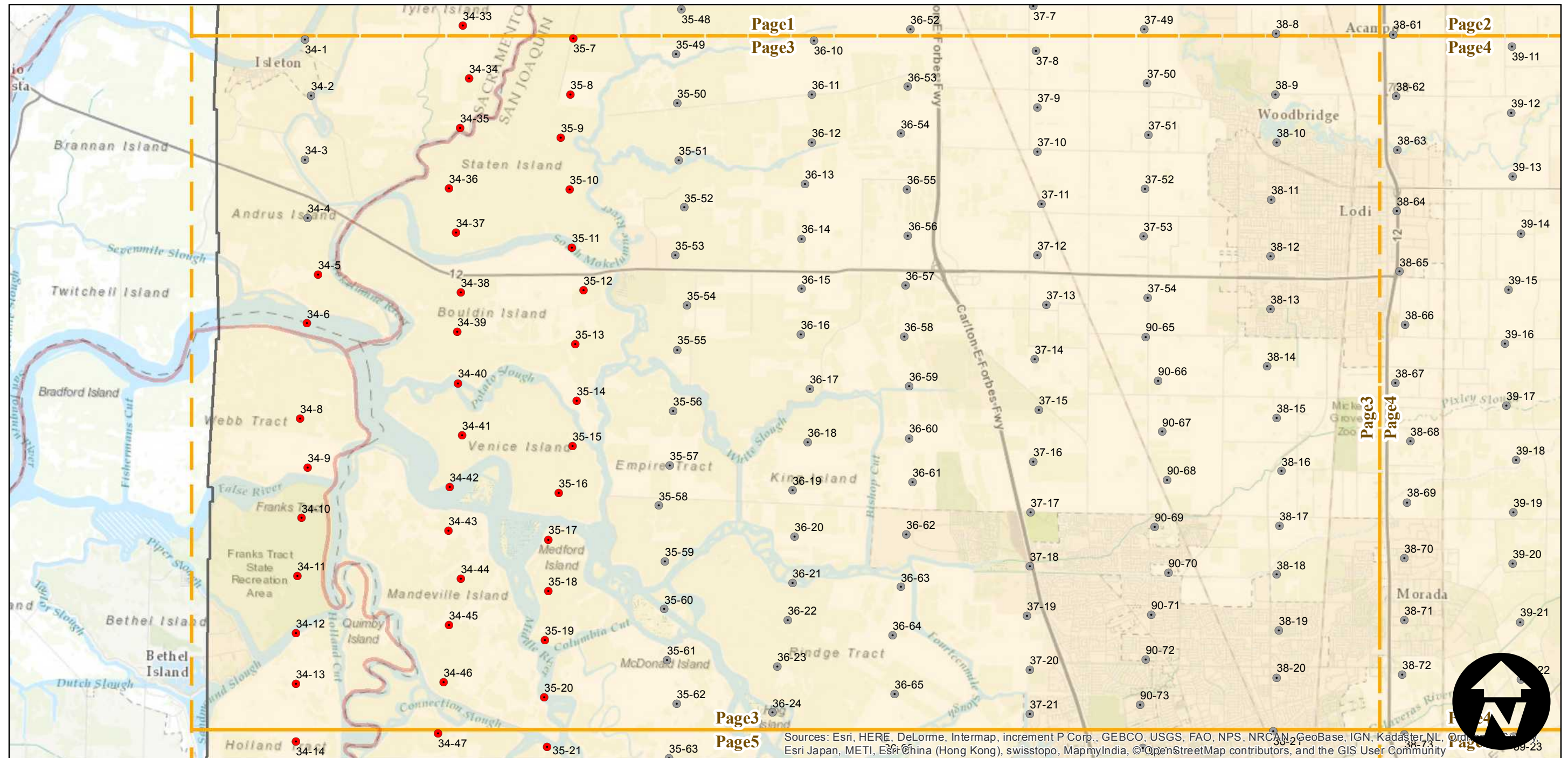
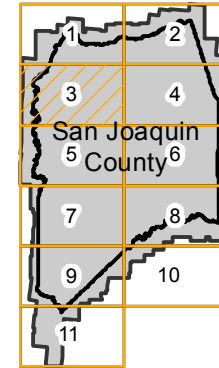
Counties: San Joaquin  
 Flight date: 10-20-1937  
 Scale: 1:20,000  
 Overlap: 60%

Complete Metadata:  
<http://www.library.ucsb.edu/map-imagery-lab/aerial-photography-information>

Note: Imagery borrowed from UC Davis; scanned and digitized to add to MIL's collection. Acquired in 2009. Only 5 paper photographs held in MIL's collection.

- MIL owns frame
- MIL does not own frame

## FLIGHT LOCATION



0 2 4 8 Miles

Index to Aerial Photography  
 Page 3 of 11

Scale of this index: 1:110,000



Sources: Esri, HERE, DeLorme, Intermap, increment P Corp., GEBCO, USGS, FAO, NPS, NRCAN, GeoBase, IGN, Kadaster NL, Ordnance Survey, Esri Japan, METI, Esri China (Hong Kong), swisstopo, MapmyIndia, ©OpenStreetMap contributors, and the GIS User Community



# ABD-1937

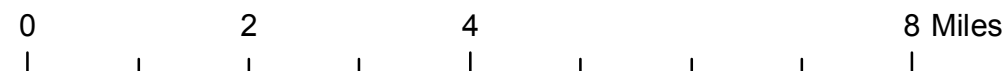
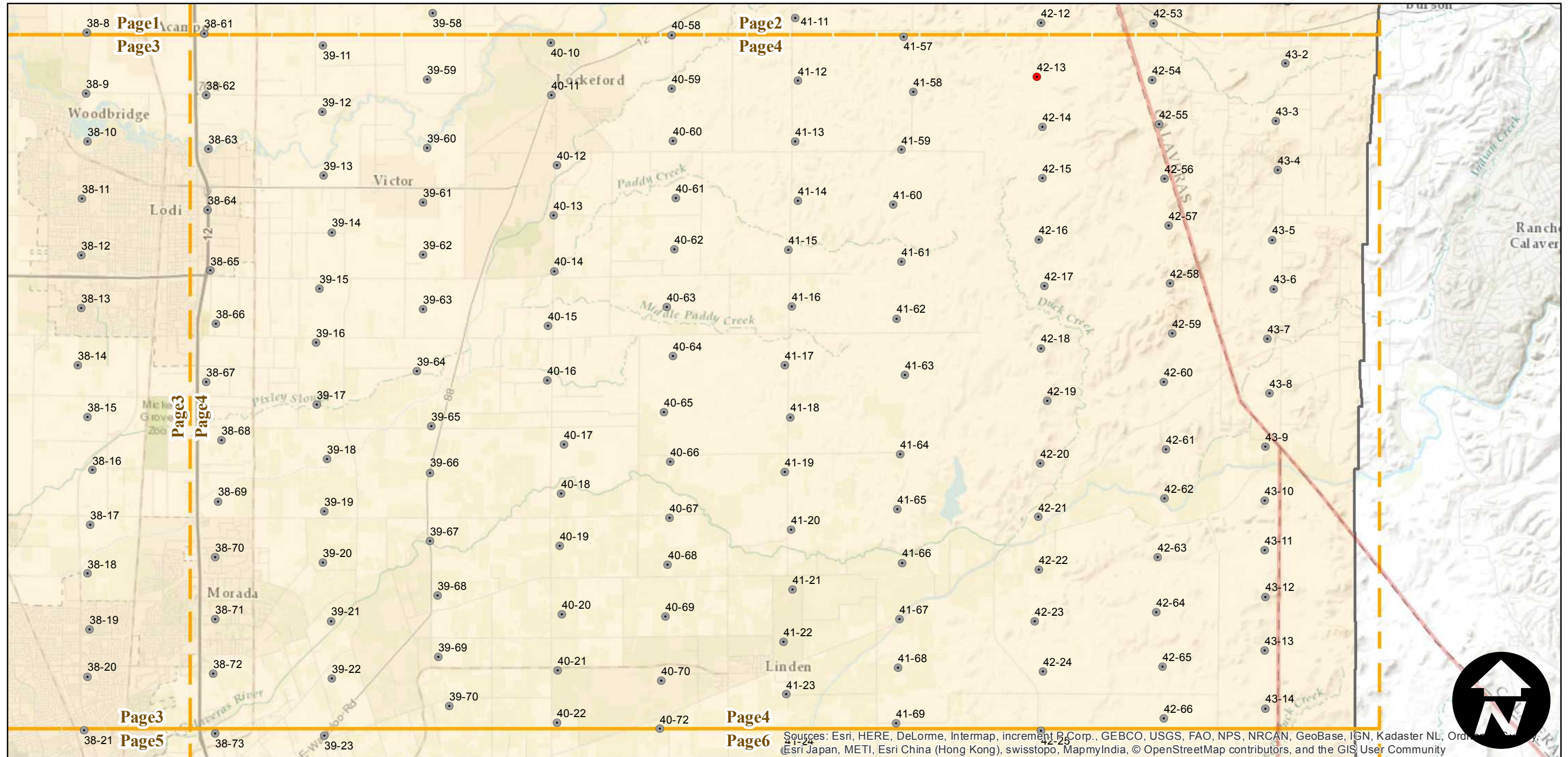
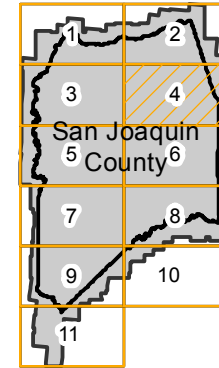
Counties: San Joaquin  
Flight date: 10-20-1937  
Scale: 1:20,000  
Overlap: 60%

Complete Metadata:  
<http://www.library.ucsb.edu/map-imagery-lab/aerial-photography-information>

Note: Imagery borrowed from UC Davis; scanned and digitized to add to MIL's collection. Acquired in 2009. Only 5 paper photographs held in MIL's collection.

- MIL owns frame
- MIL does not own frame

## FLIGHT LOCATION



Sources: Esri, HERE, DeLorme, Intermap, increment P Corp., GEBCO, USGS, FAO, NPS, NRCAN, GeoBase, IGN, Kadaster NL, Ordnance Survey, Esri Japan, METI, Esri China (Hong Kong), swisstopo, MapmyIndia, © OpenStreetMap contributors, and the GIS User Community



# ABD-1937

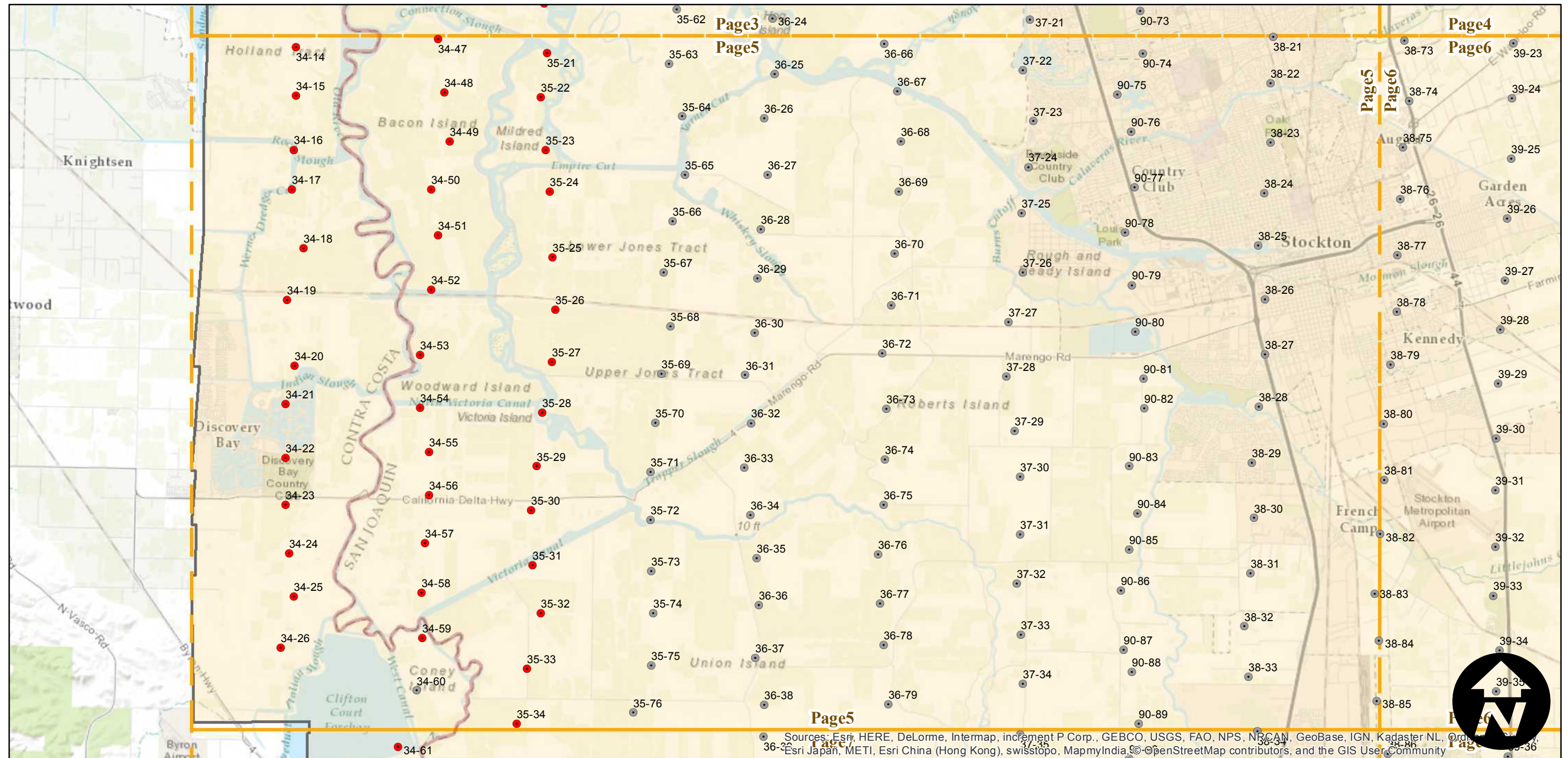
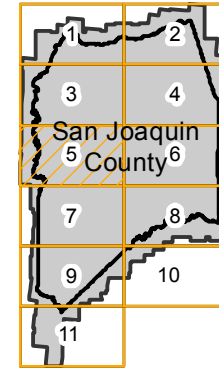
Counties: San Joaquin  
Flight date: 10-20-1937  
Scale: 1:20,000  
Overlap: 60%

Complete Metadata:  
<http://www.library.ucsb.edu/map-imagery-lab/aerial-photography-information>

Note: Imagery borrowed from UC Davis; scanned and digitized to add to MIL's collection. Acquired in 2009. Only 5 paper photographs held in MIL's collection.

- MIL owns frame
- MIL does not own frame

## FLIGHT LOCATION



Sources: Esri, HERE, DeLorme, Intermap, increment P Corp., GEBCO, USGS, FAO, NPS, NRCAN, GeoBase, IGN, Kadaster NL, Ordnance Survey, Esri Japan, METI, Esri China (Hong Kong), swisstopo, MapmyIndia, © OpenStreetMap contributors, and the GIS User Community

0 2 4 8 Miles

Index to Aerial Photography  
Page 5 of 11

Scale of this index: 1:110,000



# ABD-1937

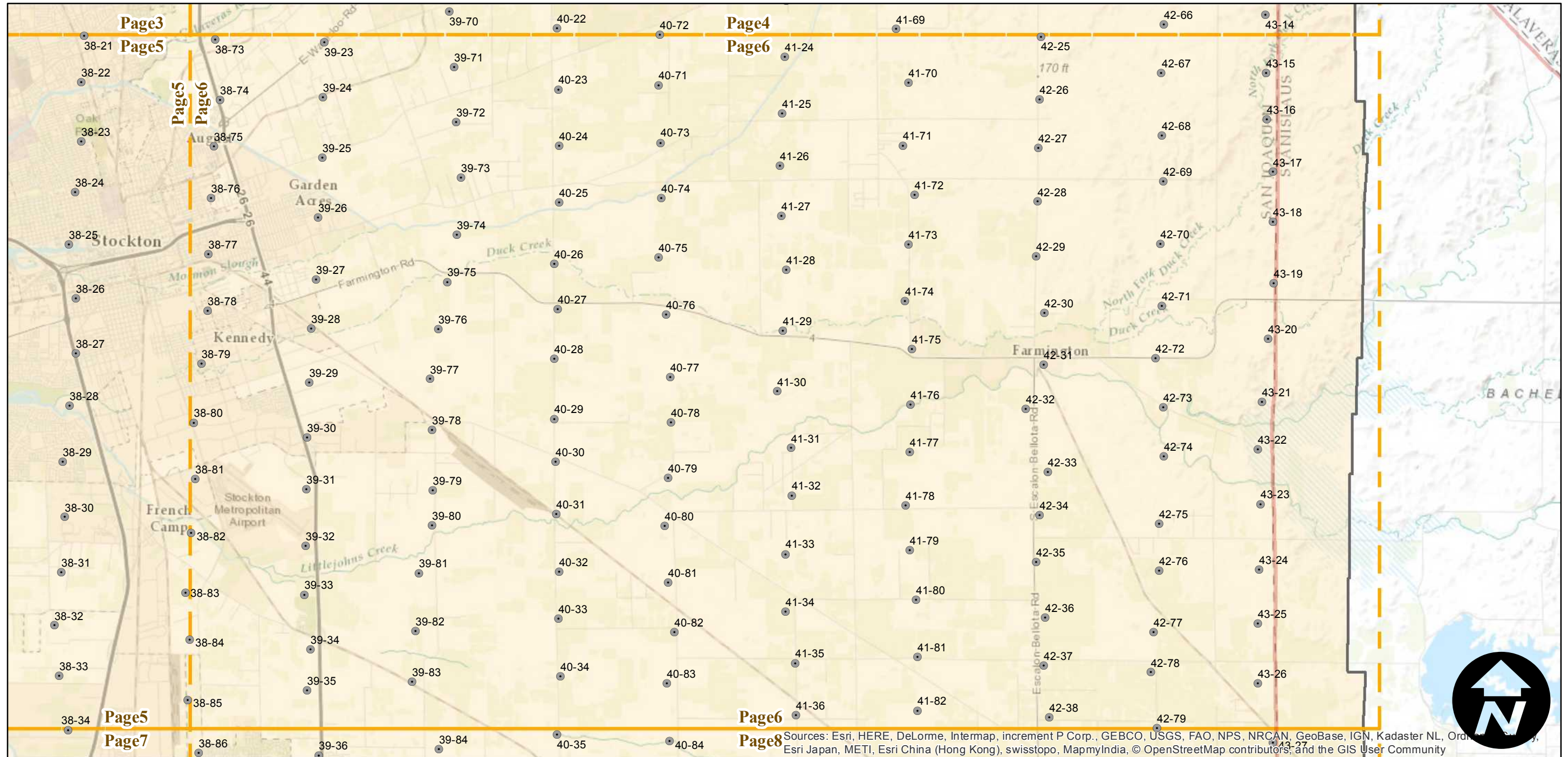
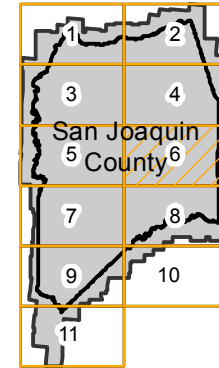
Counties: San Joaquin  
Flight date: 10-20-1937  
Scale: 1:20,000  
Overlap: 60%

Complete Metadata:  
<http://www.library.ucsb.edu/map-imagery-lab/aerial-photography-information>

Note: Imagery borrowed from UC Davis; scanned and digitized to add to MIL's collection. Acquired in 2009. Only 5 paper photographs held in MIL's collection.

- MIL owns frame
- MIL does not own frame

## FLIGHT LOCATION



Sources: Esri, HERE, DeLorme, Intermap, increment P Corp., GEBCO, USGS, FAO, NPS, NRCAN, GeoBase, IGN, Kadaster NL, Ordnance Survey, Esri Japan, METI, Esri China (Hong Kong), swisstopo, MapmyIndia, © OpenStreetMap contributors, and the GIS User Community

0 2 4 8 Miles

Index to Aerial Photography  
Page 6 of 11

Scale of this index: 1:110,000



# ABD-1937

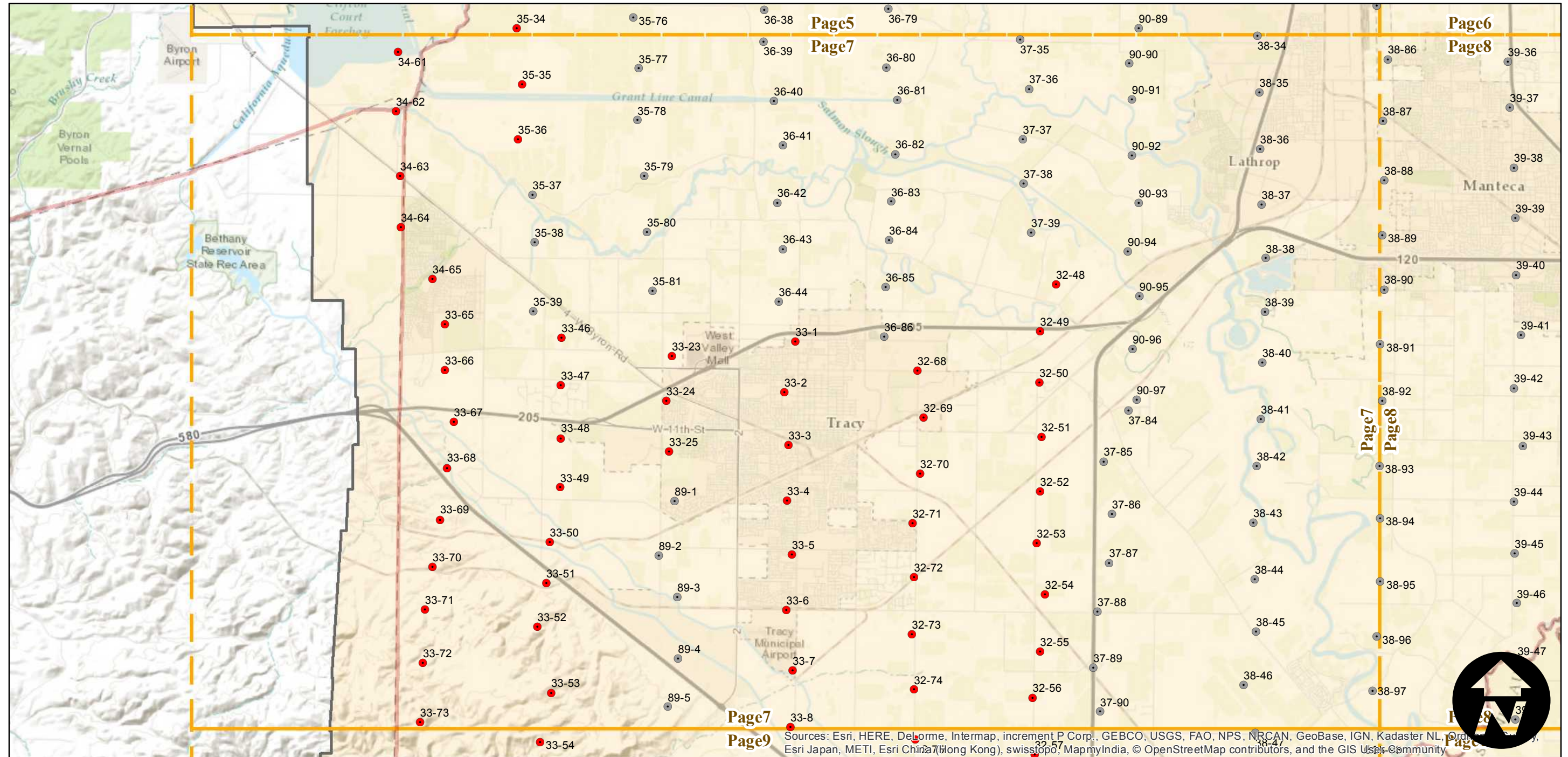
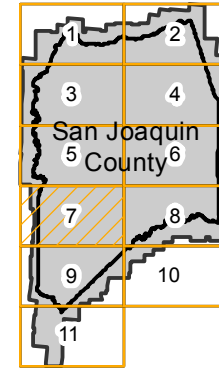
Counties: San Joaquin  
Flight date: 10-20-1937  
Scale: 1:20,000  
Overlap: 60%

Complete Metadata:  
<http://www.library.ucsb.edu/map-imagery-lab/aerial-photography-information>

Note: Imagery borrowed from UC Davis; scanned and digitized to add to MIL's collection. Acquired in 2009. Only 5 paper photographs held in MIL's collection.

- MIL owns frame
- MIL does not own frame

## FLIGHT LOCATION



Sources: Esri, HERE, DeLorme, Intermap, increment P Corp., GEBCO, USGS, FAO, NPS, NRCAN, GeoBase, IGN, Kadaster NL, Ordnance Survey, Esri Japan, METI, Esri China (Hong Kong), swisstopo, MapmyIndia, © OpenStreetMap contributors, and the GIS User Community

0 2 4 8 Miles

Index to Aerial Photography  
Page 7 of 11

Scale of this index: 1:110,000



# ABD-1937

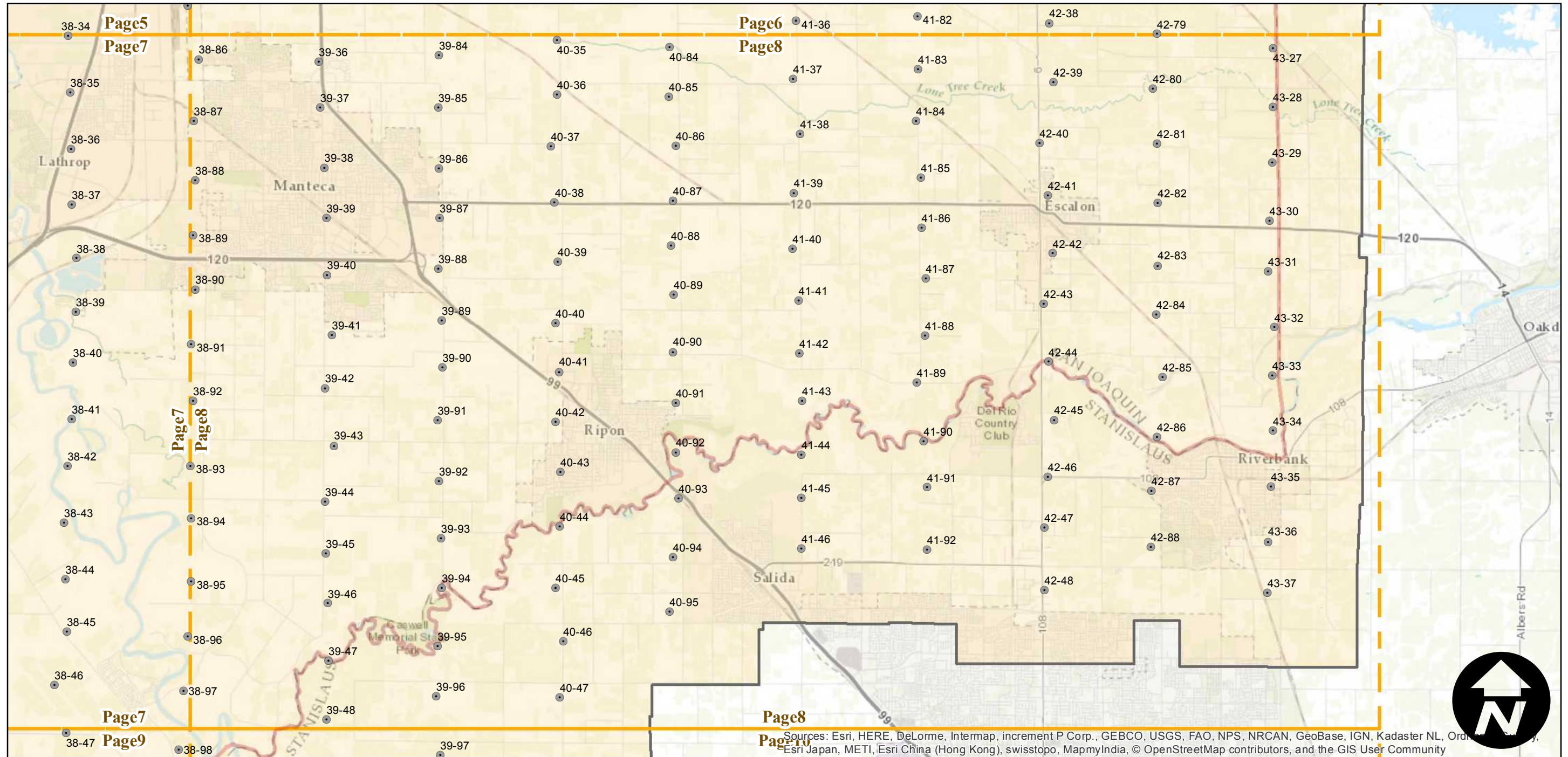
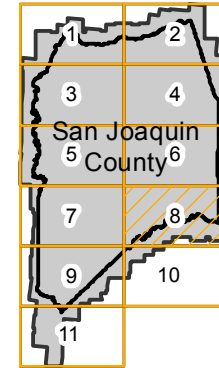
Counties: San Joaquin  
Flight date: 10-20-1937  
Scale: 1:20,000  
Overlap: 60%

Complete Metadata:  
<http://www.library.ucsb.edu/map-imagery-lab/aerial-photography-information>

Note: Imagery borrowed from UC Davis; scanned and digitized to add to MIL's collection. Acquired in 2009. Only 5 paper photographs held in MIL's collection.

- MIL owns frame
- MIL does not own frame

## FLIGHT LOCATION



0 2 4 8 Miles

Index to Aerial Photography  
Page 8 of 11

Scale of this index: 1:110,000

Sources: Esri, HERE, DeLorme, Intermap, increment P Corp., GEBCO, USGS, FAO, NPS, NRCAN, GeoBase, IGN, Kadaster NL, Ordnance Survey, Esri Japan, METI, Esri China (Hong Kong), swisstopo, MapmyIndia, © OpenStreetMap contributors, and the GIS User Community



# ABD-1937

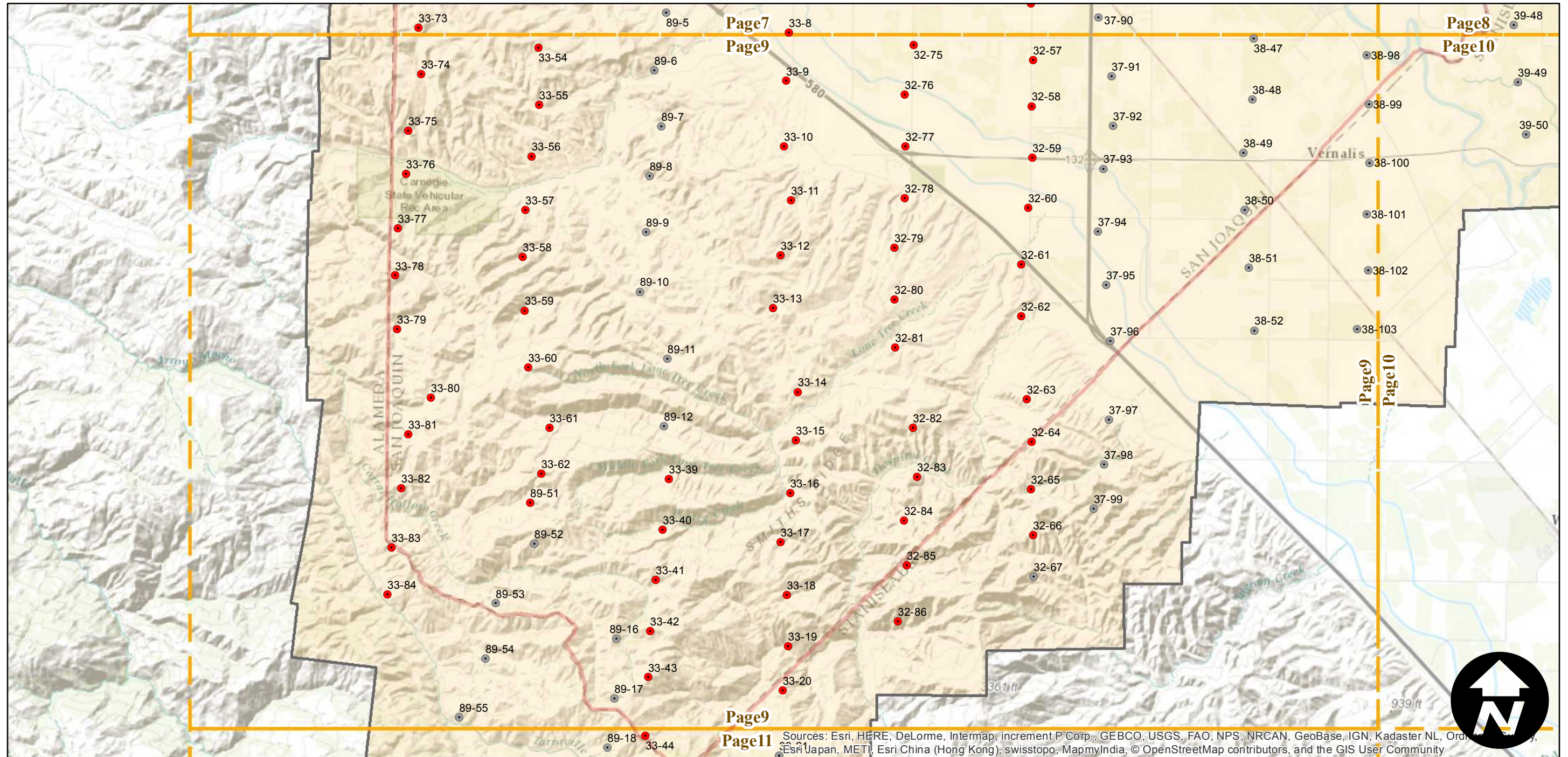
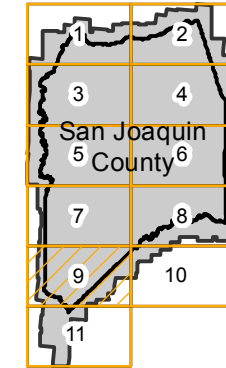
Counties: San Joaquin  
 Flight date: 10-20-1937  
 Scale: 1:20,000  
 Overlap: 60%

Complete Metadata:  
<http://www.library.ucsb.edu/map-imagery-lab/aerial-photography-information>

Note: Imagery borrowed from UC Davis; scanned and digitized to add to MIL's collection. Acquired in 2009. Only 5 paper photographs held in MIL's collection.

- MIL owns frame
- MIL does not own frame

## FLIGHT LOCATION



0 2 4 8 Miles

Index to Aerial Photography  
 Page 9 of 11

Scale of this index: 1:110,000



Sources: Esri, HERE, DeLorme, Intermap, increment P Corp., GEBCO, USGS, FAO, NPS, NRCAN, GeoBase, IGN, Kadaster NL, Ordnance Survey, Esri Japan, METI, Esri China (Hong Kong), swisstopo, MapmyIndia, © OpenStreetMap contributors, and the GIS User Community



# ABD-1937

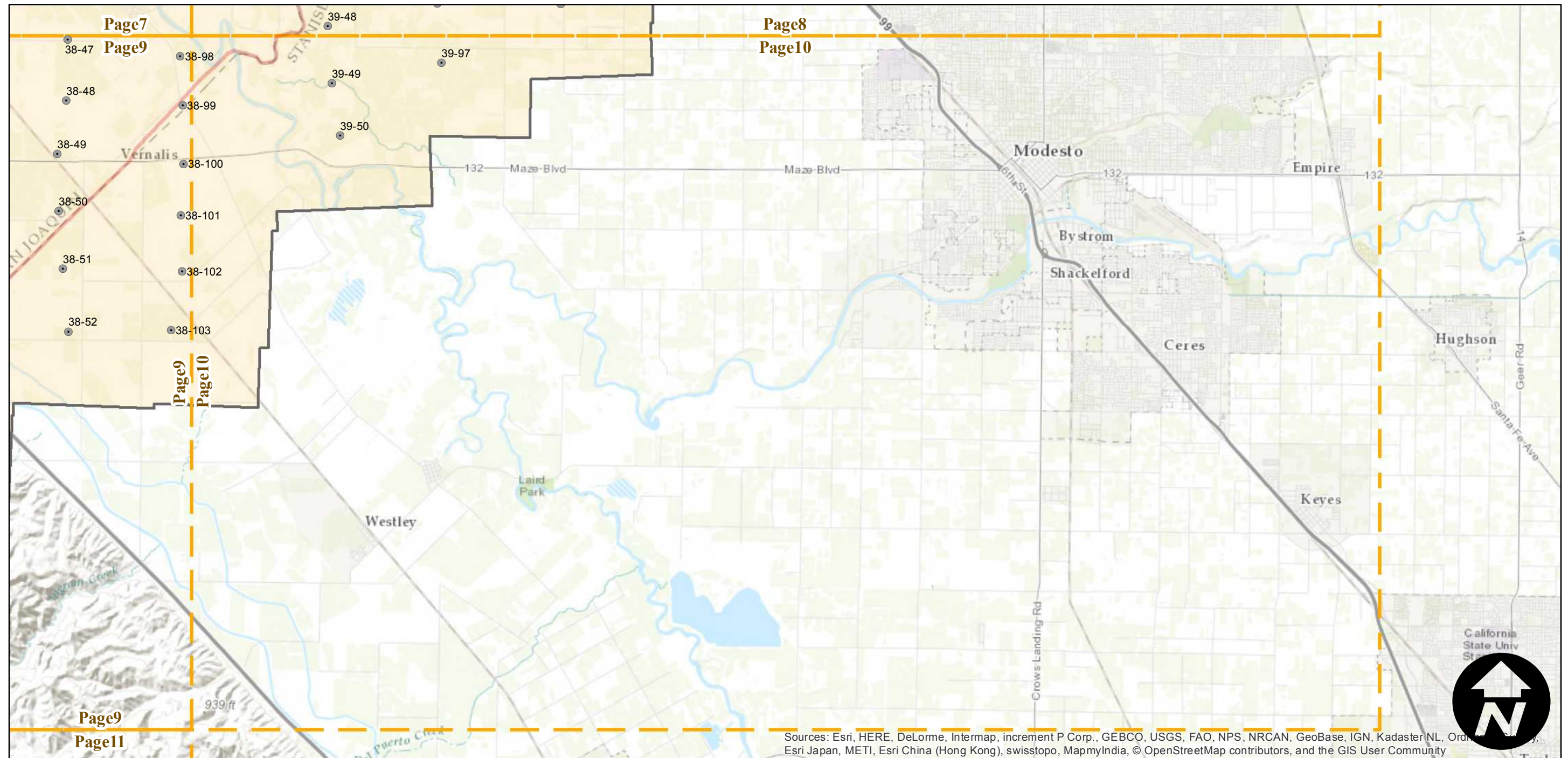
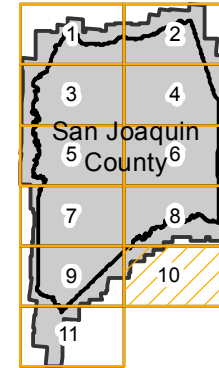
Counties: San Joaquin  
Flight date: 10-20-1937  
Scale: 1:20,000  
Overlap: 60%

Complete Metadata:  
<http://www.library.ucsb.edu/map-imagery-lab/aerial-photography-information>

Note: Imagery borrowed from UC Davis; scanned and digitized to add to MIL's collection. Acquired in 2009. Only 5 paper photographs held in MIL's collection.

- MIL owns frame
- MIL does not own frame

## FLIGHT LOCATION



0 2 4 8 Miles

Index to Aerial Photography  
Page 10 of 11

Scale of this index: 1:110,000



# ABD-1937

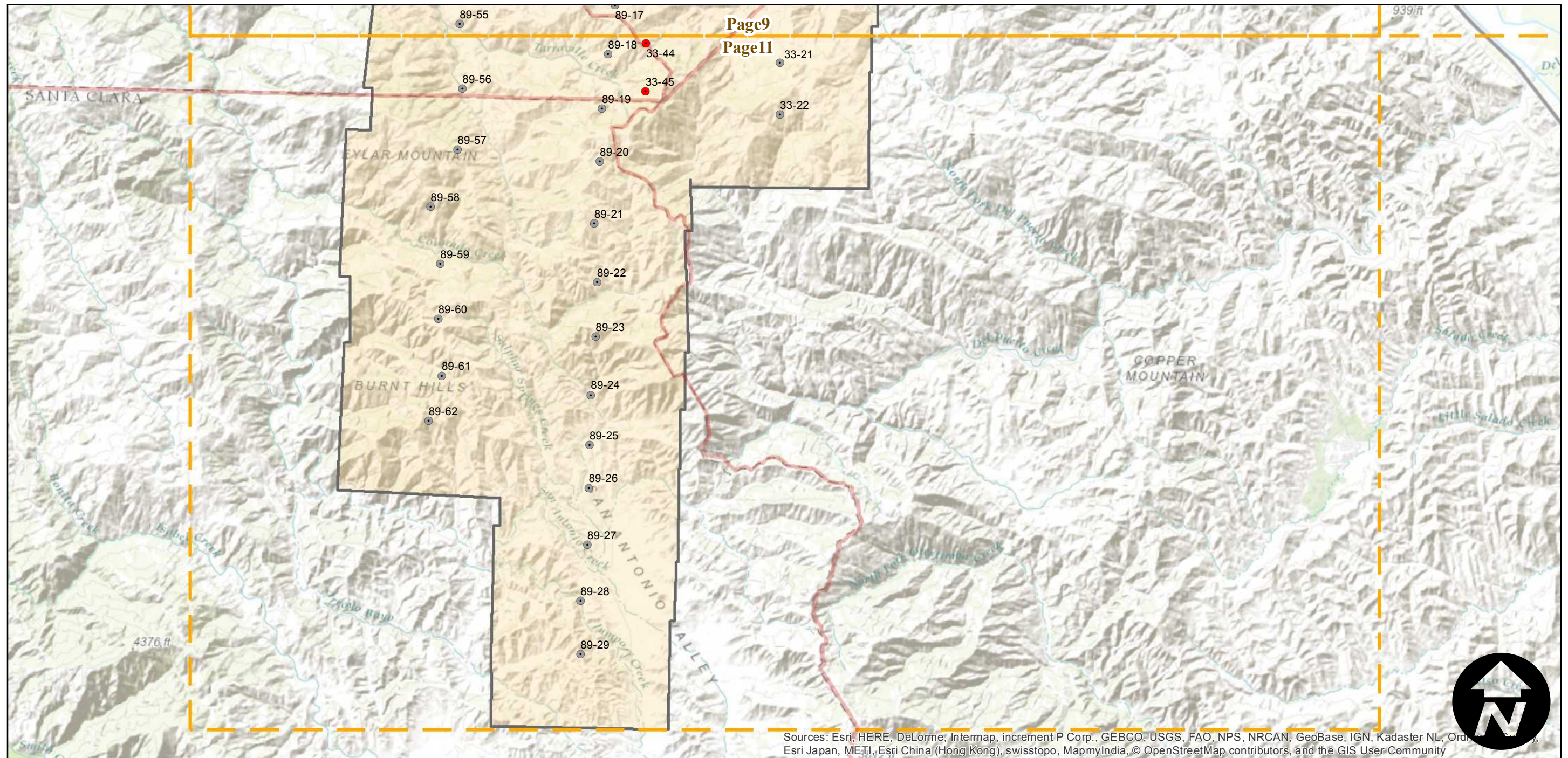
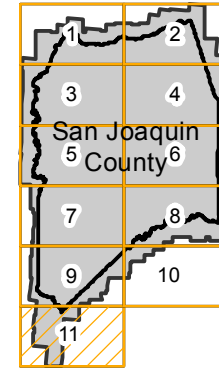
Counties: San Joaquin  
Flight date: 10-20-1937  
Scale: 1:20,000  
Overlap: 60%

Complete Metadata:  
<http://www.library.ucsb.edu/map-imagery-lab/aerial-photography-information>

Note: Imagery borrowed from UC Davis; scanned and digitized to add to MIL's collection. Acquired in 2009. Only 5 paper photographs held in MIL's collection.

- MIL owns frame
- MIL does not own frame

## FLIGHT LOCATION



Sources: Esri, HERE, DeLorme, Intermap, increment P Corp., GEBCO, USGS, FAO, NPS, NRCAN, GeoBase, IGN, Kadaster NL, Ordnance Survey, Esri Japan, METI, Esri China (Hong Kong), swisstopo, MapmyIndia, © OpenStreetMap contributors, and the GIS User Community

0 2 4 8 Miles

Index to Aerial Photography  
Page 11 of 11

Scale of this index: 1:110,000