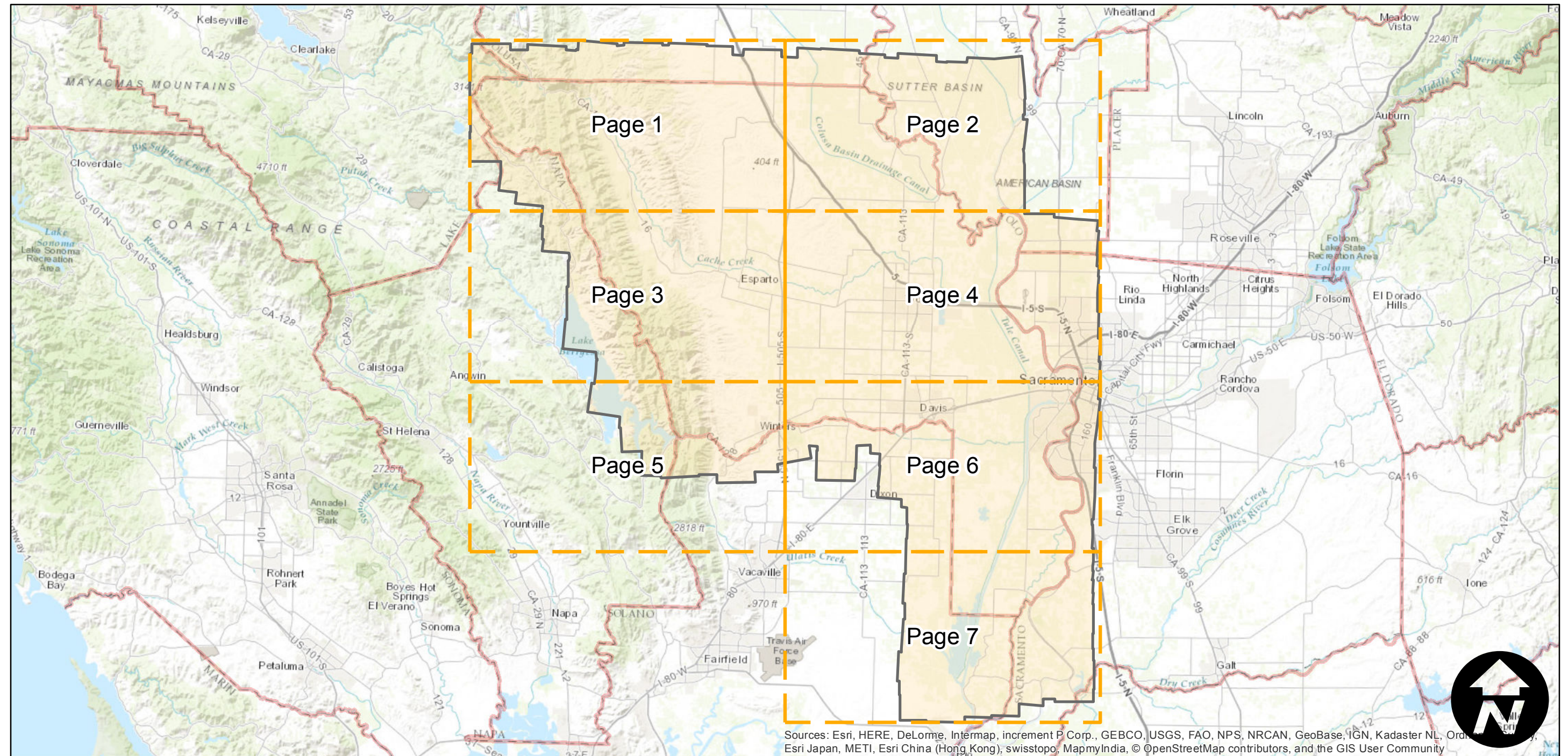
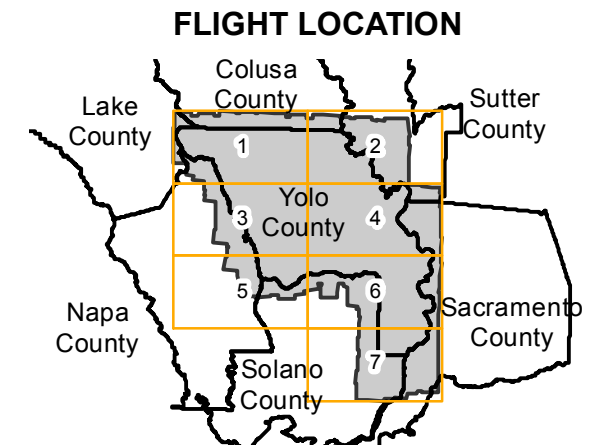


# ABB-1937

Counties: Yolo, Napa, Solano, Sacramento, Sutter, Colusa  
Flight date(s): 01-01-1937 to 10-19-1937  
Scale: 1:20,000  
Overlap: 60%

Note: Yolo County. Areas covered include Rumsey, Dunnigan, Woodland, Knights Landing, Davis, and Winters. Coverage extends into surrounding counties. Only some photographs held in analog format. Digital imagery was borrowed from UC Berkeley and UC Davis.



Sources: Esri, HERE, DeLorme, Intermap, increment P Corp., GEBCO, USGS, FAO, NPS, NRCAN, GeoBase, IGN, Kadaster NL, Ordnance Survey, Esri Japan, METI, Esri China (Hong Kong), swisstopo, MapmyIndia, © OpenStreetMap contributors, and the GIS User Community

0 10 20 40 Miles

Index to Aerial Photography  
Page Key

Scale of this index: 1:525,000

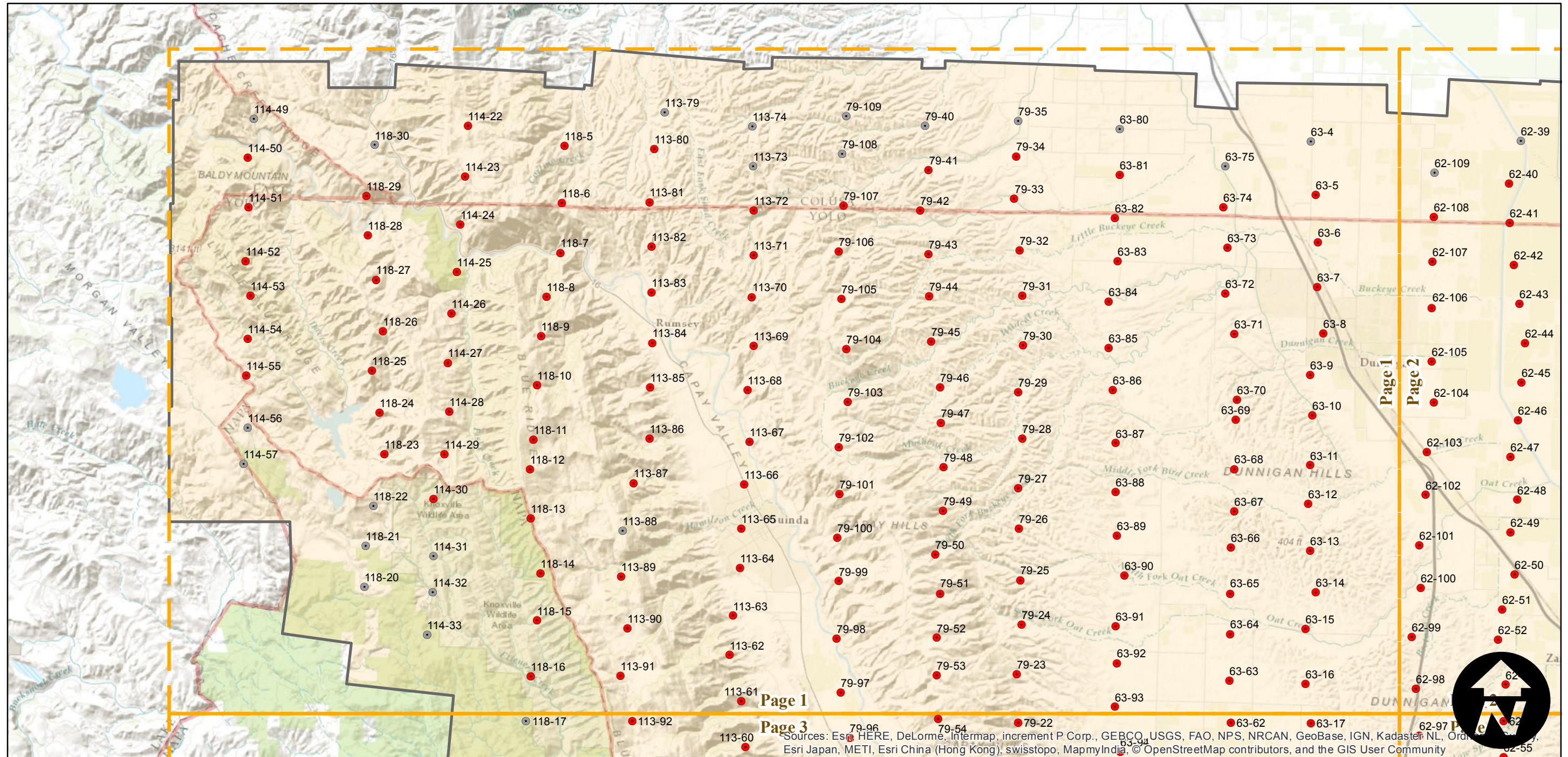
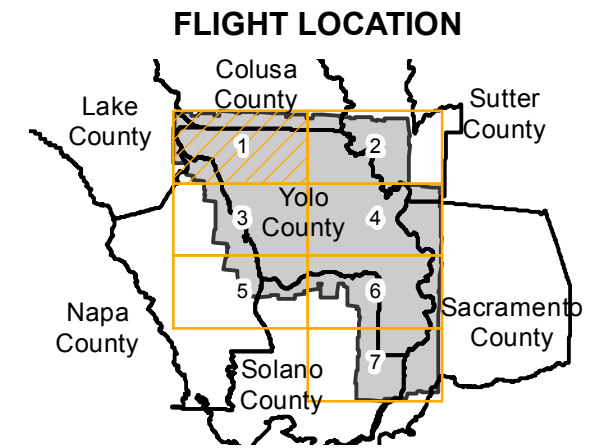
# ABB-1937

Counties: Yolo, Napa, Solano, Sacramento, Sutter, Colusa  
 Flight date(s): 01-01-1937 to 10-19-1937  
 Scale: 1:20,000  
 Overlap: 60%

Complete Metadata:  
<http://www.library.ucsb.edu/map-imagery-lab/aerial-photography-information>

Note: Yolo County. Areas covered include Rumsey, Dunnigan, Woodland, Knights Landing, Davis, and Winters. Coverage extends into surrounding counties. Only some photographs held in analog format. Digital imagery was borrowed from UC Berkeley and UC Davis.

- MIL owns frame
- MIL does not own frame



0 2 4 8 Miles

Index to Aerial Photography  
 Page 1 of 7

Scale of this index: 1:135,000

Sources: Esri, HERE, DeLorme, Intermap, increment P Corp., GEBCO, USGS, FAO, NPS, NRCAN, GeoBase, IGN, Kadaster NL, Ordnance Survey, Esri Japan, METI, Esri China (Hong Kong), swisstopo, MapmyIndia, © OpenStreetMap contributors, and the GIS User Community

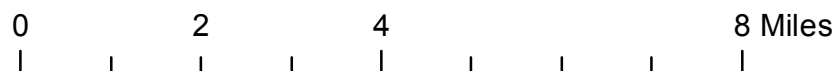
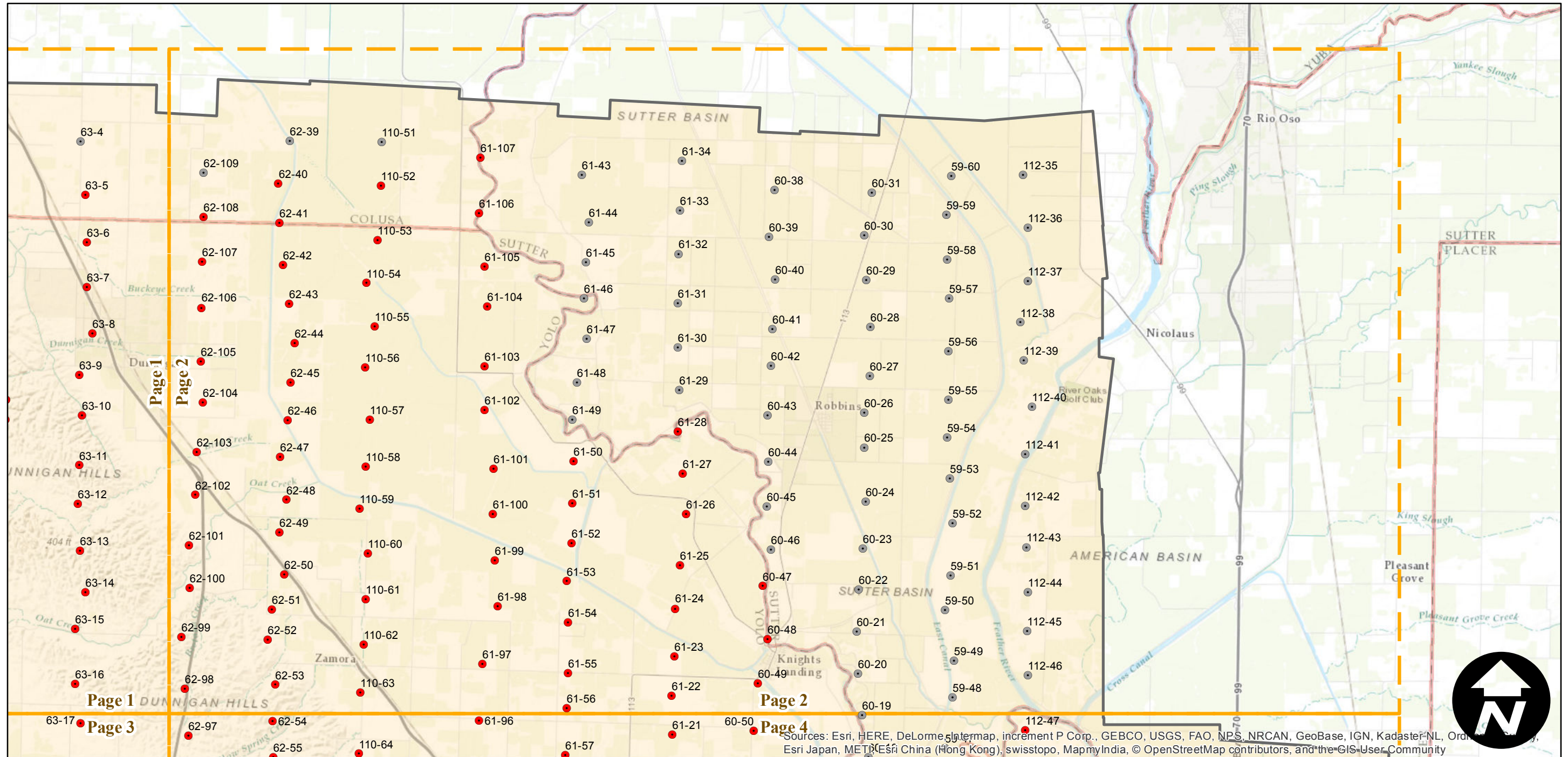
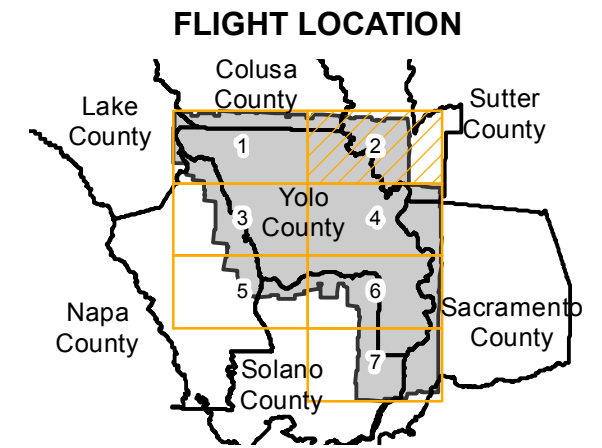
# ABB-1937

Counties: Yolo, Napa, Solano, Sacramento, Sutter, Colusa  
 Flight date(s): 01-01-1937 to 10-19-1937  
 Scale: 1:20,000  
 Overlap: 60%

Complete Metadata:  
<http://www.library.ucsb.edu/map-imagery-lab/aerial-photography-information>

Note: Yolo County. Areas covered include Rumsey, Dunnigan, Woodland, Knights Landing, Davis, and Winters. Coverage extends into surrounding counties. Only some photographs held in analog format. Digital imagery was borrowed from UC Berkeley and UC Davis.

- MIL owns frame
- MIL does not own frame



Sources: Esri, HERE, DeLorme, Mapbox, Microsoft, Swire, Unacademy, USGS, FAO, NPS, NRCAN, GeoBase, IGN, Kadaster NL, Ordnance Survey, Esri Japan, METI, Esri China (Hong Kong), swisstopo, MapmyIndia, © OpenStreetMap contributors, and the GIS User Community

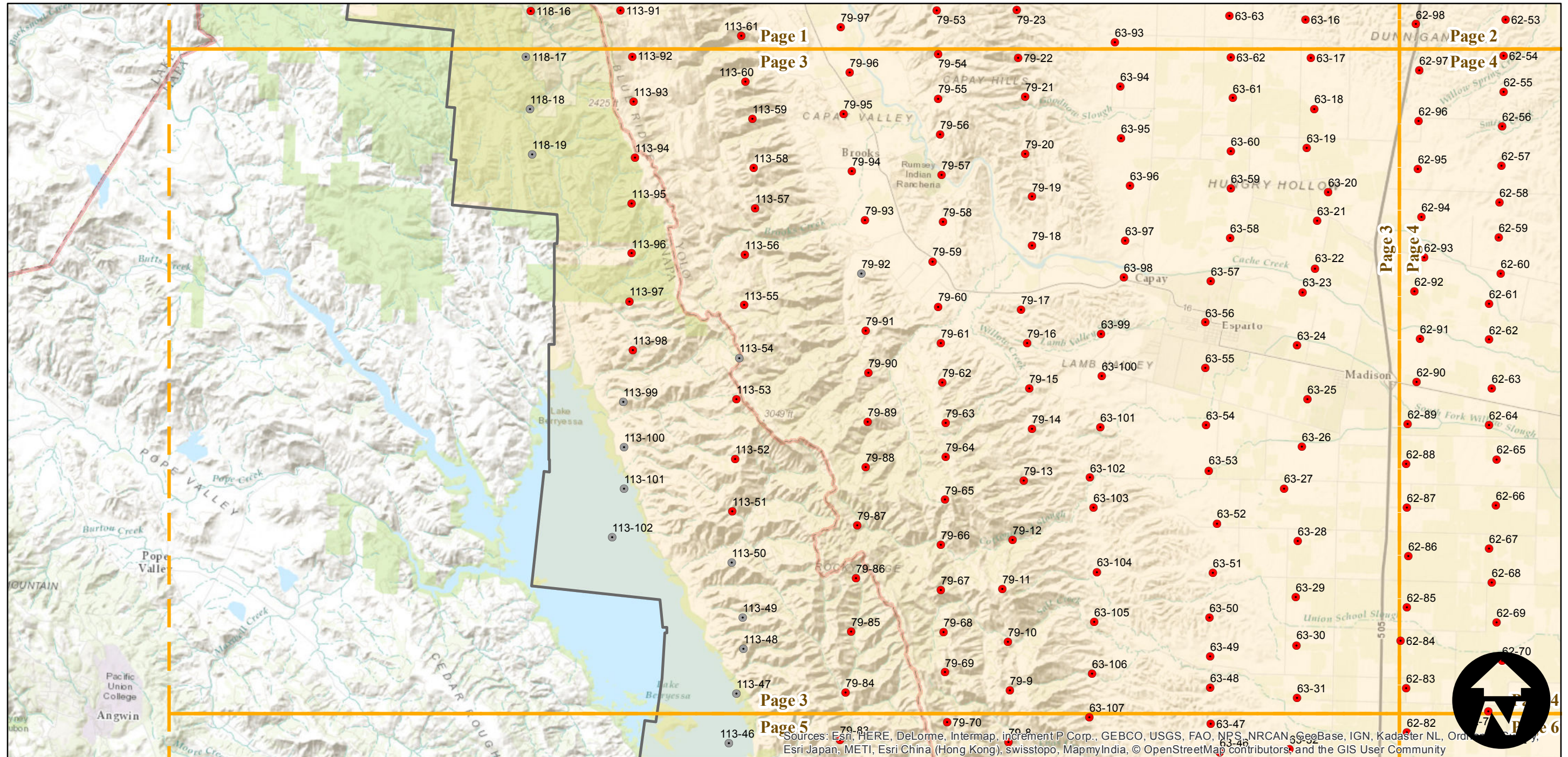
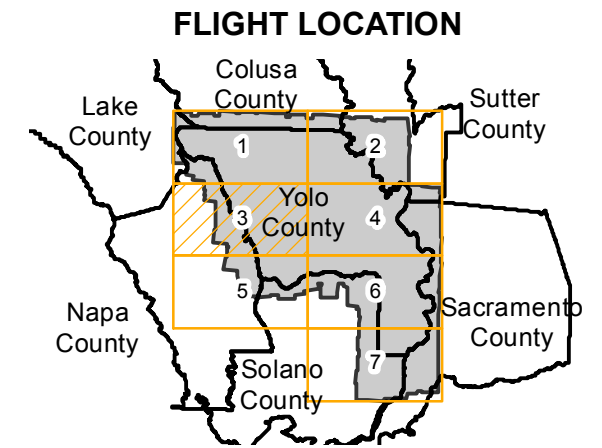
# ABB-1937

Counties: Yolo, Napa, Solano, Sacramento, Sutter, Colusa  
 Flight date(s): 01-01-1937 to 10-19-1937  
 Scale: 1:20,000  
 Overlap: 60%

Complete Metadata:  
<http://www.library.ucsb.edu/map-imagery-lab/aerial-photography-information>

Note: Yolo County. Areas covered include Rumsey, Dunnigan, Woodland, Knights Landing, Davis, and Winters. Coverage extends into surrounding counties. Only some photographs held in analog format. Digital imagery was borrowed from UC Berkeley and UC Davis.

- MIL owns frame
- MIL does not own frame



0 2 4 8 Miles

Index to Aerial Photography  
 Page 3 of 7

Scale of this index: 1:135,000

Sources: Esri, HERE, DeLorme, Intermap, increment P Corp., GEBCO, USGS, FAO, NPS, NRCAN, GeoBase, IGN, Kadaster NL, Ordnance Survey, Esri Japan, METI, Esri China (Hong Kong), Swisstopo, MapmyIndia, © OpenStreetMap contributors, and the GIS User Community

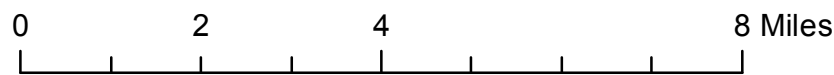
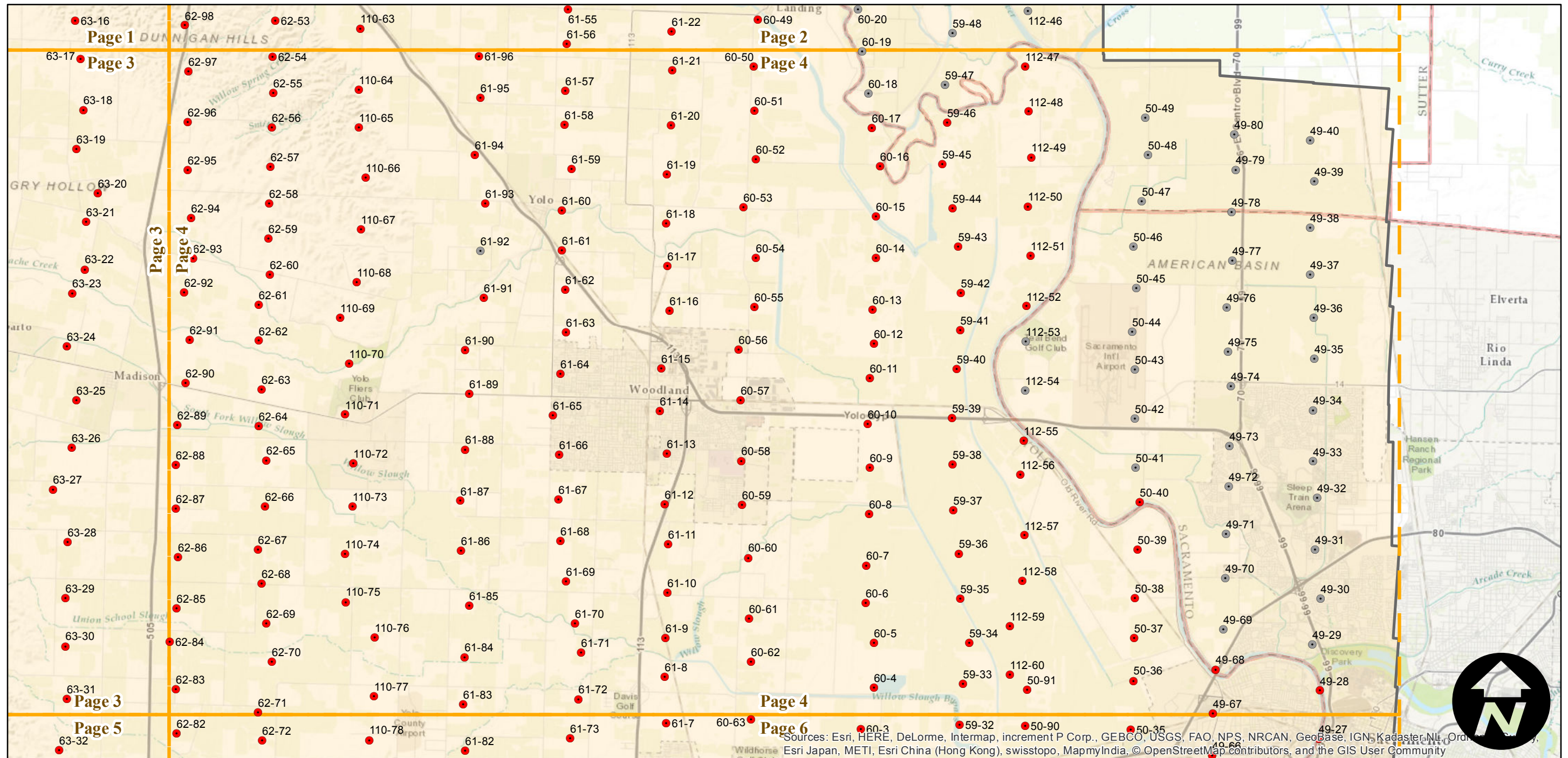
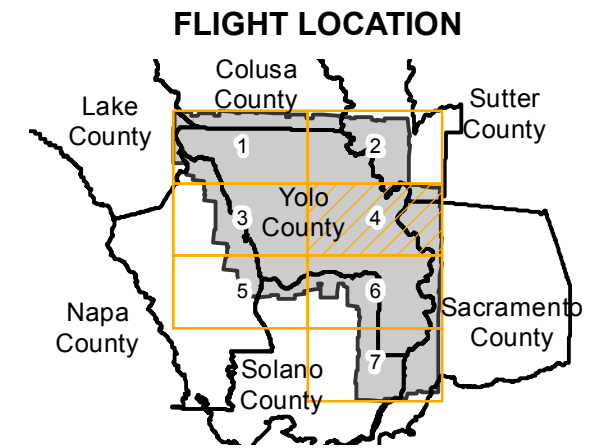
# ABB-1937

Counties: Yolo, Napa, Solano, Sacramento, Sutter, Colusa  
 Flight date(s): 01-01-1937 to 10-19-1937  
 Scale: 1:20,000  
 Overlap: 60%

Complete Metadata:  
<http://www.library.ucsb.edu/map-imagery-lab/aerial-photography-information>

Note: Yolo County. Areas covered include Rumsey, Dunnigan, Woodland, Knights Landing, Davis, and Winters. Coverage extends into surrounding counties. Only some photographs held in analog format. Digital imagery was borrowed from UC Berkeley and UC Davis.

- MIL owns frame
- MIL does not own frame



Sources: Esri, HERE, DeLorme, Intermap, increment P Corp., GEBCO, USGS, FAO, NPS, NRCAN, GeoBase, IGN, Kadaster, NL, Ordnance Survey, Esri Japan, METI, Esri China (Hong Kong), swisstopo, MapmyIndia, © OpenStreetMap contributors, and the GIS User Community

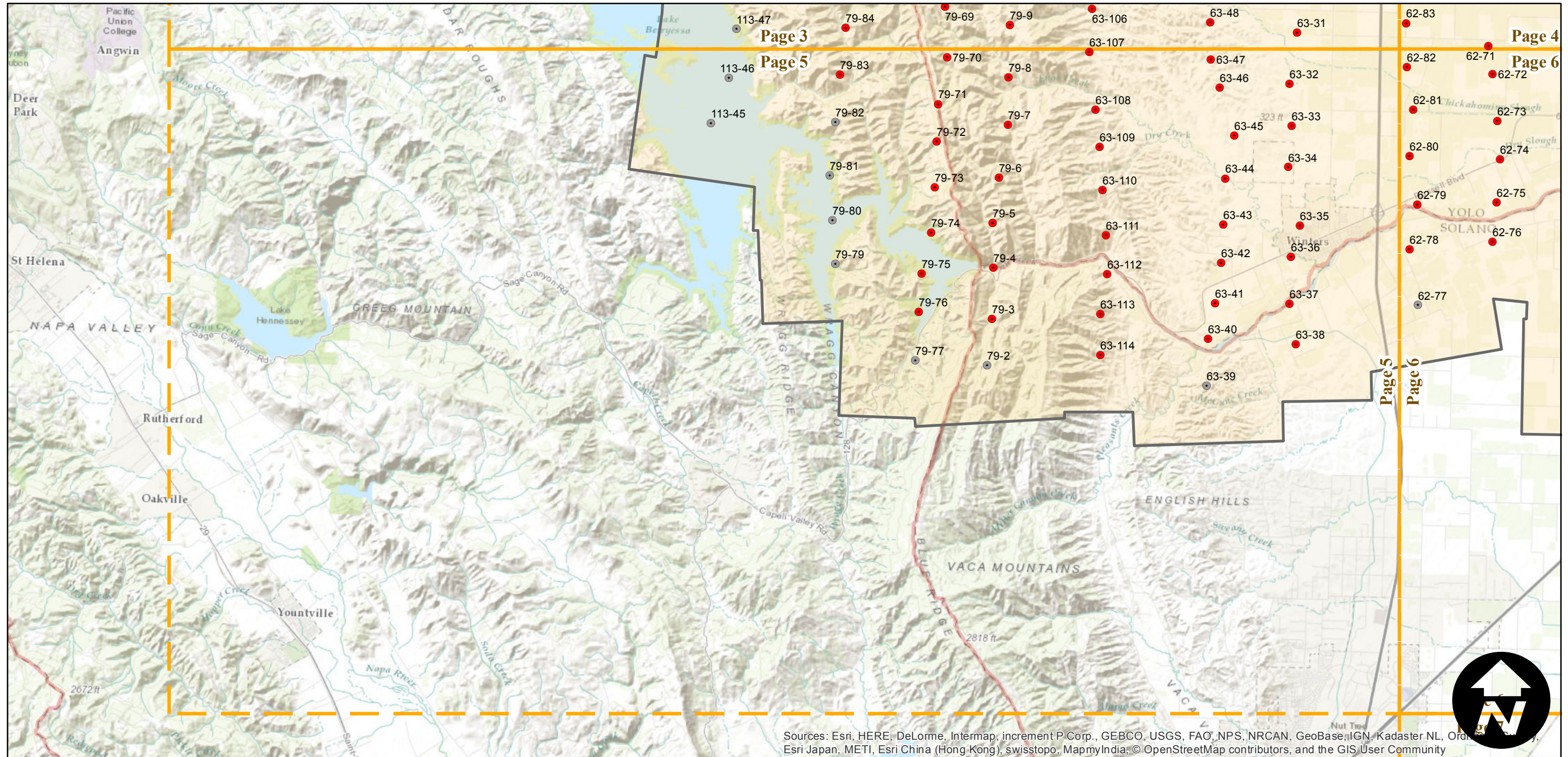
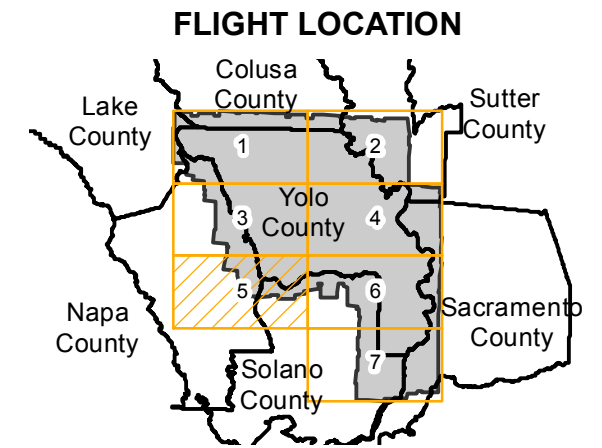
# ABB-1937

Counties: Yolo, Napa, Solano, Sacramento, Sutter, Colusa  
 Flight date(s): 01-01-1937 to 10-19-1937  
 Scale: 1:20,000  
 Overlap: 60%

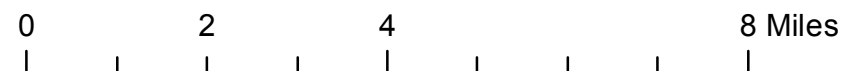
Complete Metadata:  
<http://www.library.ucsb.edu/map-imagery-lab/aerial-photography-information>

Note: Yolo County. Areas covered include Rumsey, Dunnigan, Woodland, Knights Landing, Davis, and Winters. Coverage extends into surrounding counties. Only some photographs held in analog format. Digital imagery was borrowed from UC Berkeley and UC Davis.

- MIL owns frame
- MIL does not own frame



Sources: Esri, HERE, DeLorme, Intermap, increment P Corp., GEBCO, USGS, FAO, NPS, NRCAN, GeoBase, IGN, Kadaster NL, Ordnance Survey, Esri Japan, METI, Esri China (Hong Kong), swisstopo, MapmyIndia, © OpenStreetMap contributors, and the GIS User Community



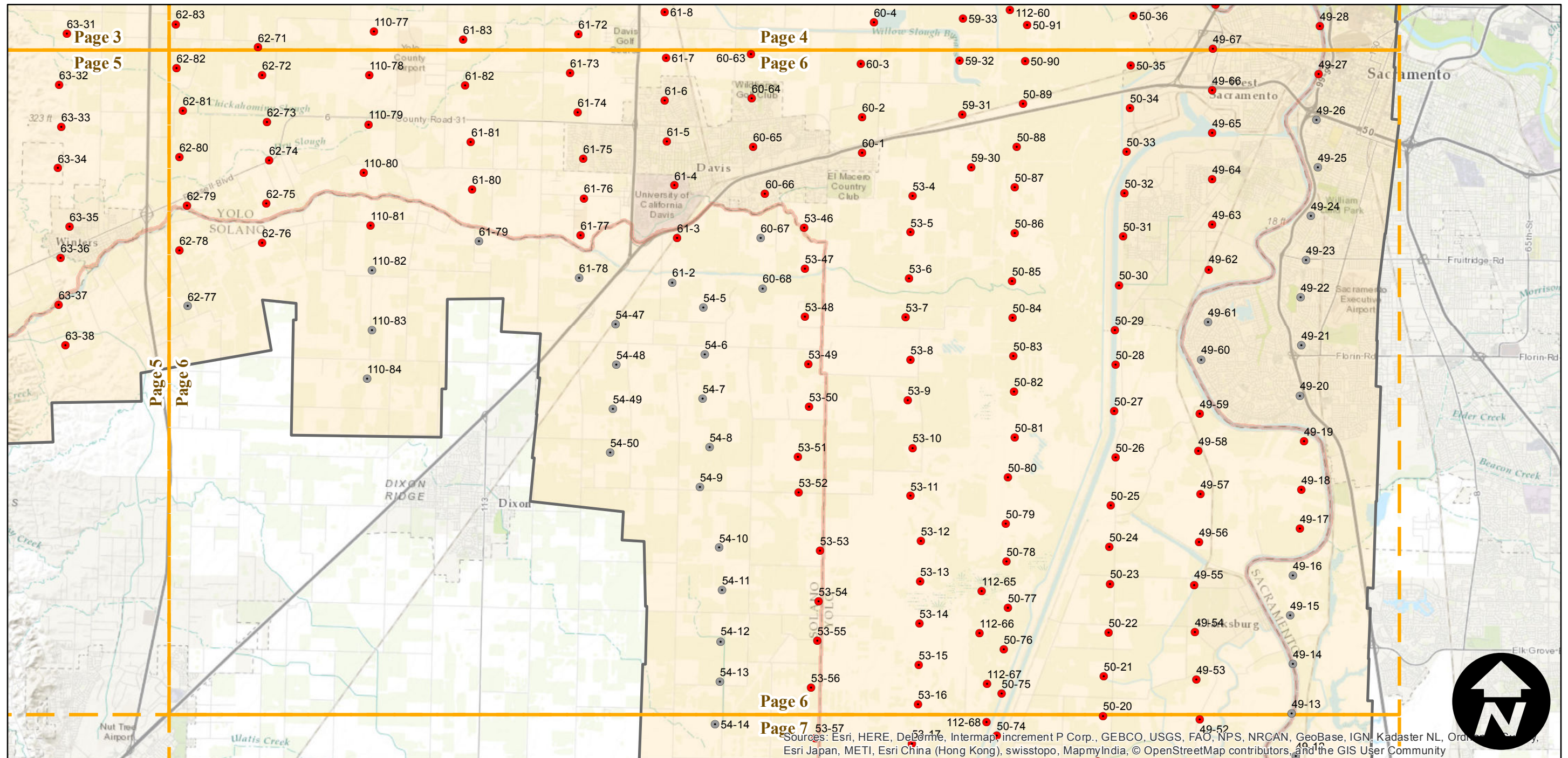
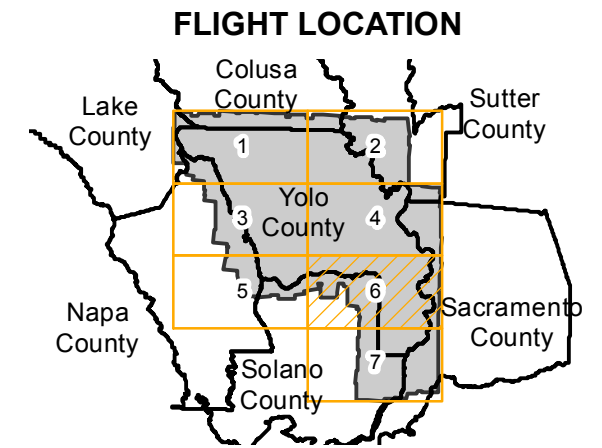
# ABB-1937

Counties: Yolo, Napa, Solano, Sacramento, Sutter, Colusa  
 Flight date(s): 01-01-1937 to 10-19-1937  
 Scale: 1:20,000  
 Overlap: 60%

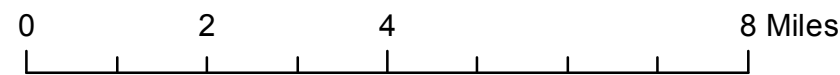
Complete Metadata:  
<http://www.library.ucsb.edu/map-imagery-lab/aerial-photography-information>

Note: Yolo County. Areas covered include Rumsey, Dunnigan, Woodland, Knights Landing, Davis, and Winters. Coverage extends into surrounding counties. Only some photographs held in analog format. Digital imagery was borrowed from UC Berkeley and UC Davis.

- MIL owns frame
- MIL does not own frame



Sources: Esri, HERE, DeLorme, Intermap, increment P Corp., GEBCO, USGS, FAO, NPS, NRCAN, GeoBase, IGN, Kadaster NL, Ordnance Survey, Esri Japan, METI, Esri China (Hong Kong), swisstopo, MapmyIndia, © OpenStreetMap contributors, and the GIS User Community



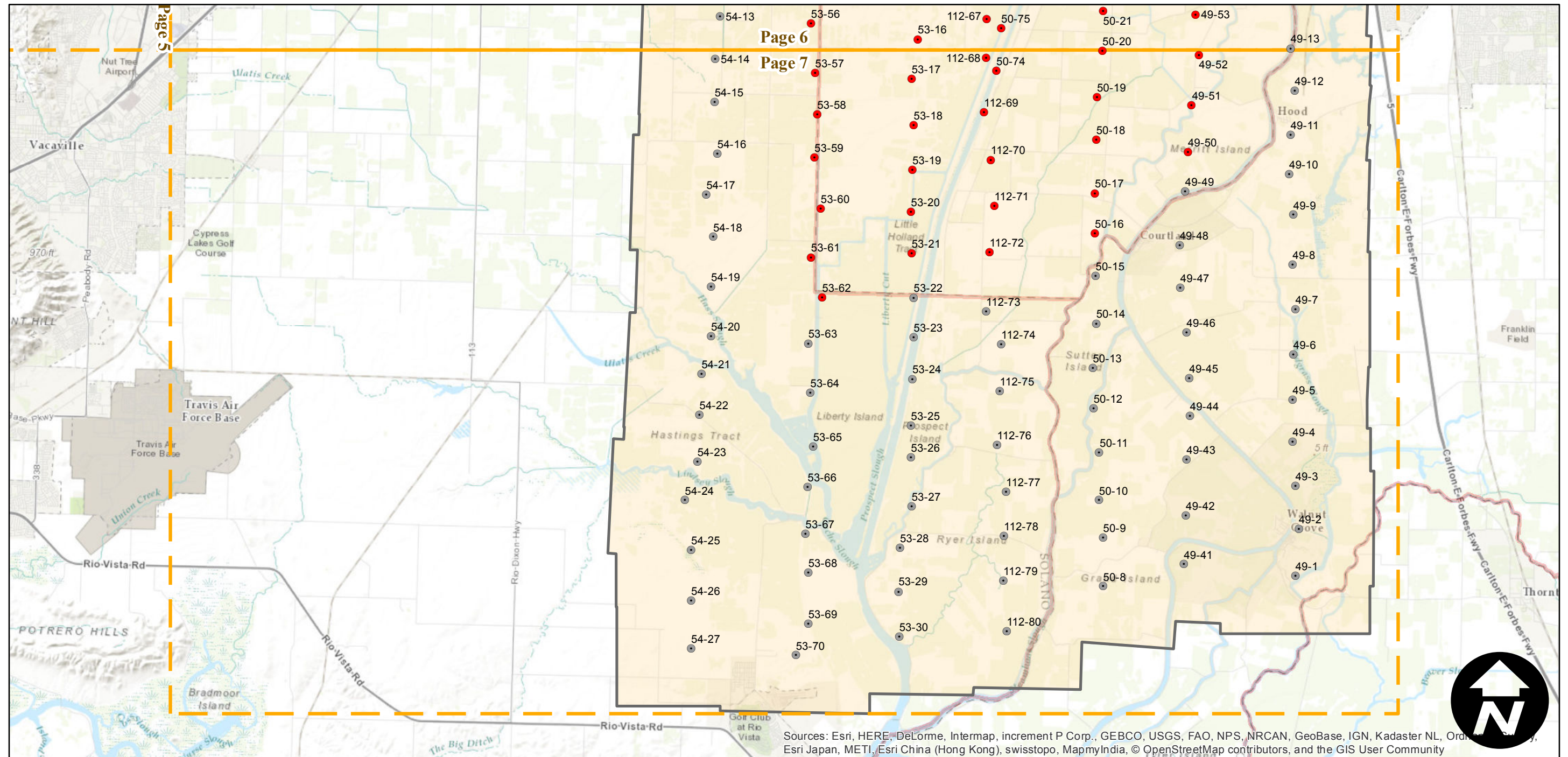
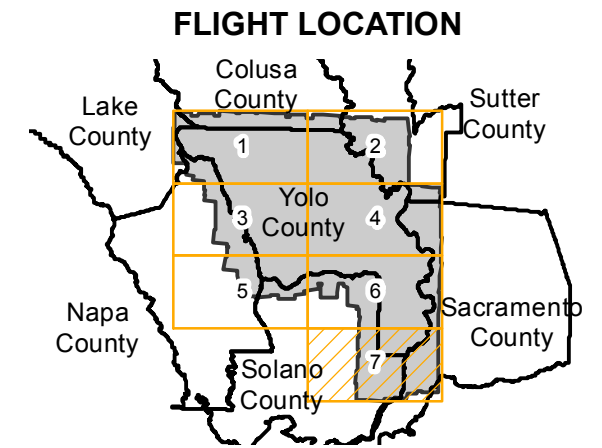
# ABB-1937

Counties: Yolo, Napa, Solano, Sacramento, Sutter, Colusa  
 Flight date(s): 01-01-1937 to 10-19-1937  
 Scale: 1:20,000  
 Overlap: 60%

Complete Metadata:  
<http://www.library.ucsb.edu/map-imagery-lab/aerial-photography-information>

Note: Yolo County. Areas covered include Rumsey, Dunnigan, Woodland, Knights Landing, Davis, and Winters. Coverage extends into surrounding counties. Only some photographs held in analog format. Digital imagery was borrowed from UC Berkeley and UC Davis.

- MIL owns frame
- MIL does not own frame



Sources: Esri, HERE, DeLorme, Intermap, increment P Corp., GEBCO, USGS, FAO, NPS, NRCAN, GeoBase, IGN, Kadaster NL, Ordnance Survey, Esri Japan, METI, Esri China (Hong Kong), swisstopo, MapmyIndia, © OpenStreetMap contributors, and the GIS User Community

0 2 4 8 Miles

Index to Aerial Photography  
 Page 7 of 7

Scale of this index: 1:135,000