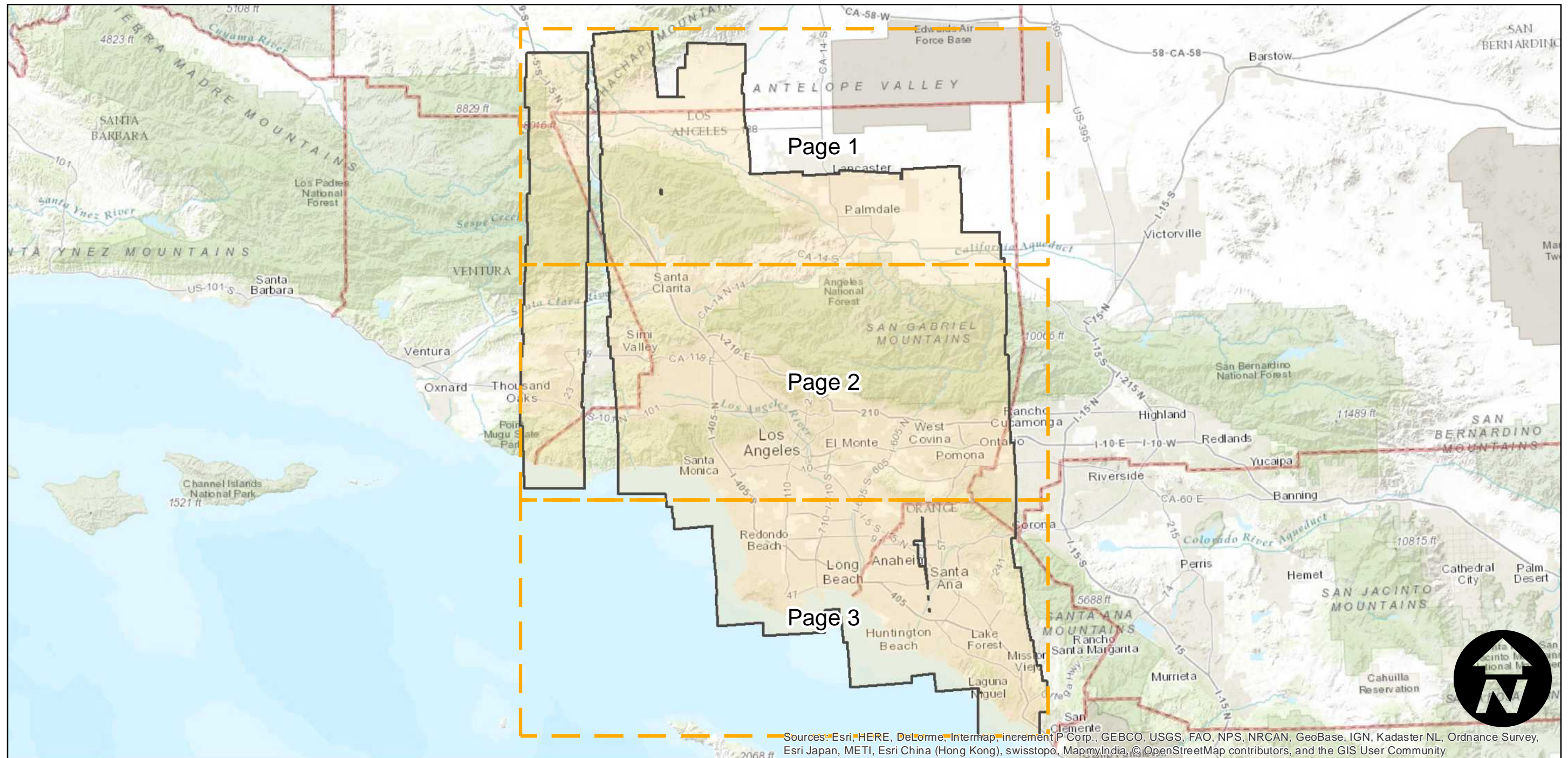
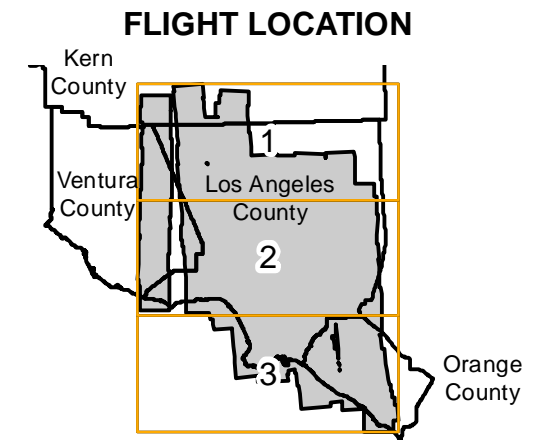


# 73-036-00997

Counties: Kern, Los Angeles, Orange, Ventura  
Flight date(s): 03-14-1973  
Scale: 1:32,500  
Overlap: 60%

Note: Most of Los Angeles and Orange counties from Antelope Valley to San Juan Capistrano. Coverage extends into eastern Ventura and southern Kern counties. See flight summary report for detailed flight information.



Sources: Esri, HERE, DeLorme, Intermap, increment P Corp., GEBCO, USGS, FAO, NPS, NRCAN, GeoBase, IGN, Kadaster NL, Ordnance Survey, Esri Japan, METI, Esri China (Hong Kong), swisstopo, MapmyIndia, © OpenStreetMap contributors, and the GIS User Community

0 15 30 60 Miles

Index to Aerial Photography  
Page Key

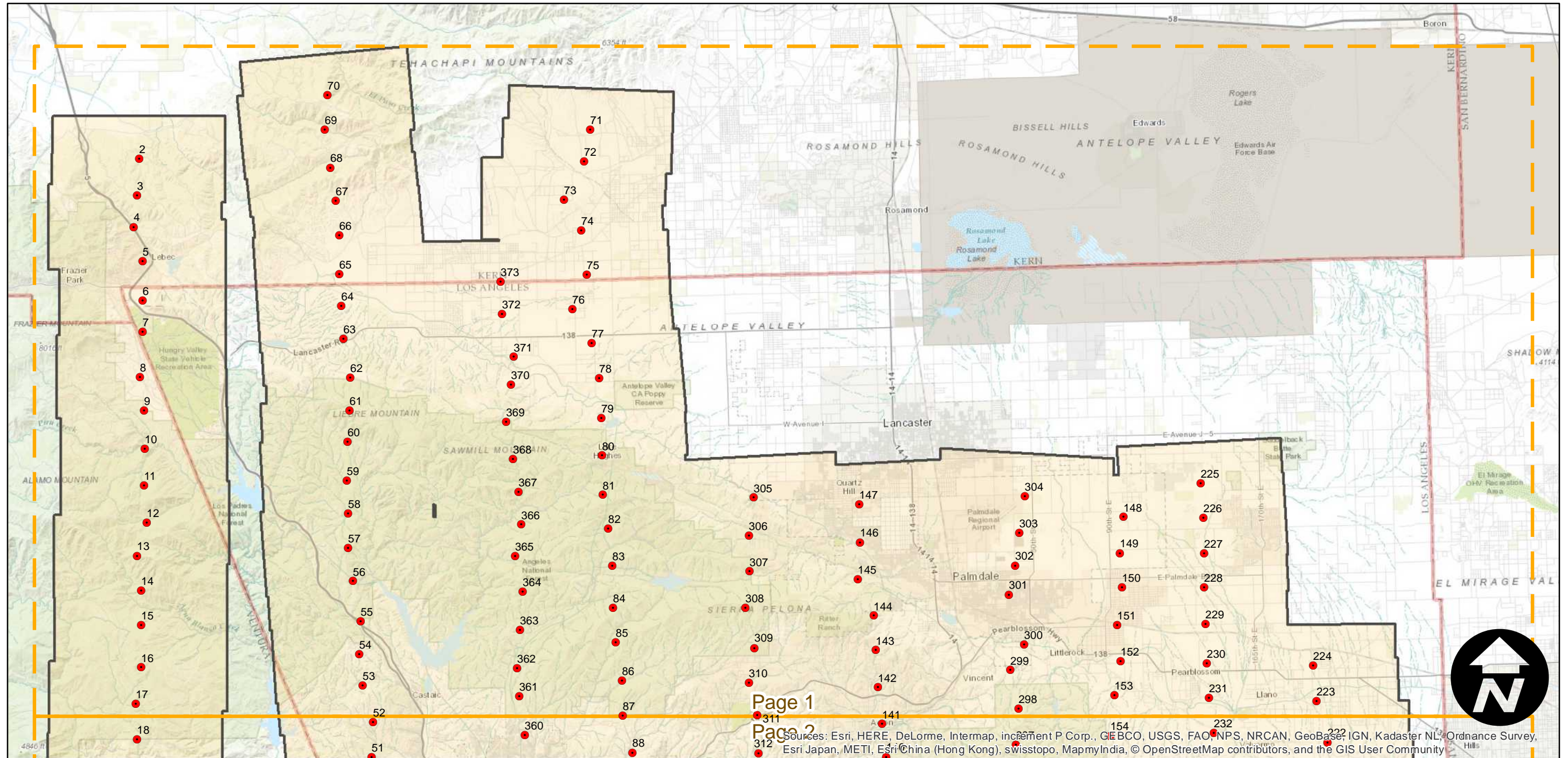
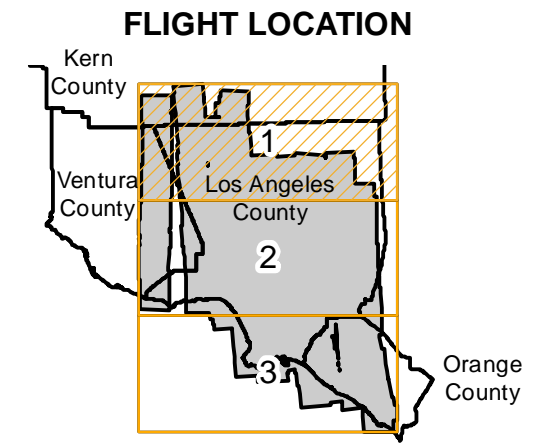
Scale of this index: 1:995,000

73-036-00997

Counties: Kern, Los Angeles, Orange, Ventura  
Flight date(s): 03-14-1973  
Scale: 1:32,500  
Overlap: 60%

Complete Metadata:  
<http://www.library.ucsb.edu/mil/aerial-photography-tools>

Note: Most of Los Angeles and Orange counties from Antelope Valley to San Juan Capistrano. Coverage extends into eastern Ventura and southern Kern counties. See flight summary report for detailed flight information.



Page 1

Page 2

Sources: Esri, HERE, DeLorme, Intermap, increment P Corp., GEBCO, USGS, FAO, NPS, NRCAN, GeoBase, IGN, Kadaster NL, Ordnance Survey, Esri Japan, METI, Esri China (Hong Kong), swisstopo, MapmyIndia, © OpenStreetMap contributors, and the GIS User Community

0 5 10 20 Miles

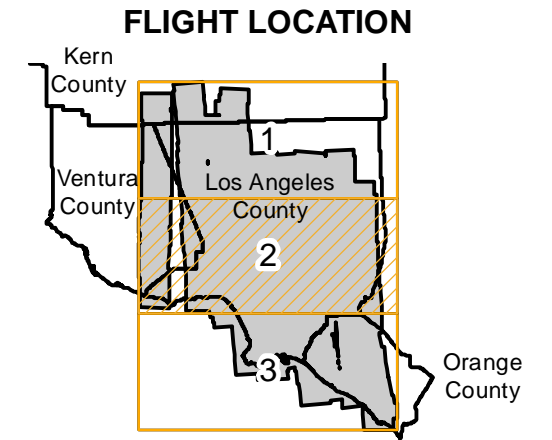
Index to Aerial Photography  
Page 1 of 3

Scale of this index: 1:350,000

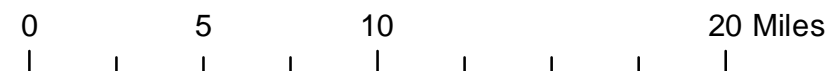
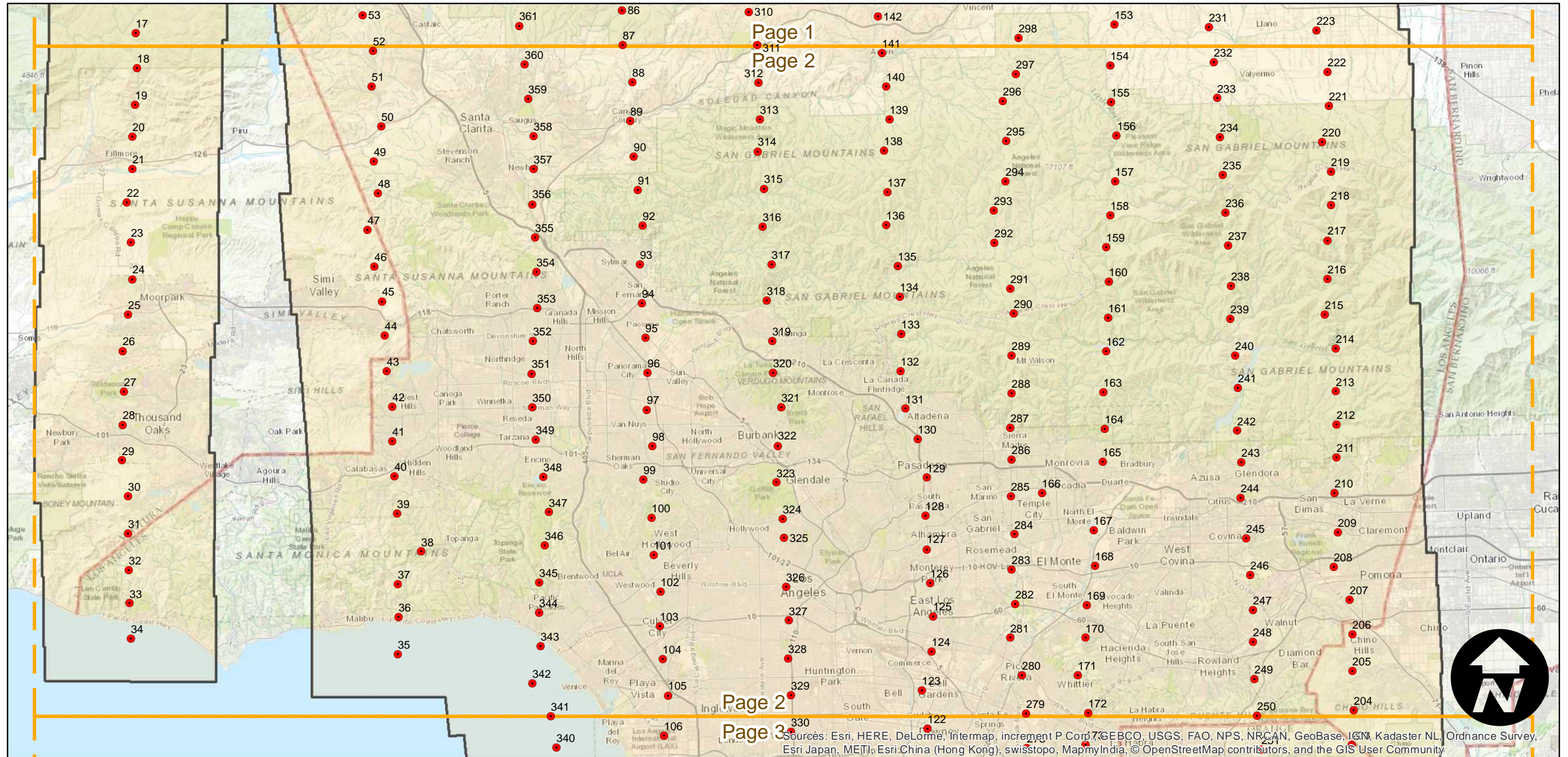
73-036-00997

Counties: Kern, Los Angeles, Orange, Ventura  
Flight date(s): 03-14-1973  
Scale: 1:32,500  
Overlap: 60%

Note: Most of Los Angeles and Orange counties from Antelope Valley to San Juan Capistrano. Coverage extends into eastern Ventura and southern Kern counties. See flight summary report for detailed flight information.



Complete Metadata:  
<http://www.library.ucsb.edu/mil/aerial-photography-tools>

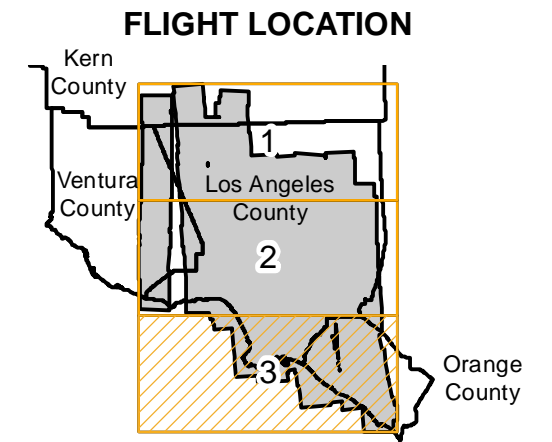


Sources: Esri, HERE, DeLorme, Intermap, increment P Corp., GEBCO, USGS, FAO, NPS, NRCAN, GeoBase, IGN, Kadaster NL, Ordnance Survey, Esri Japan, METI, Esri China (Hong Kong), swisstopo, MapmyIndia, © OpenStreetMap contributors, and the GIS User Community

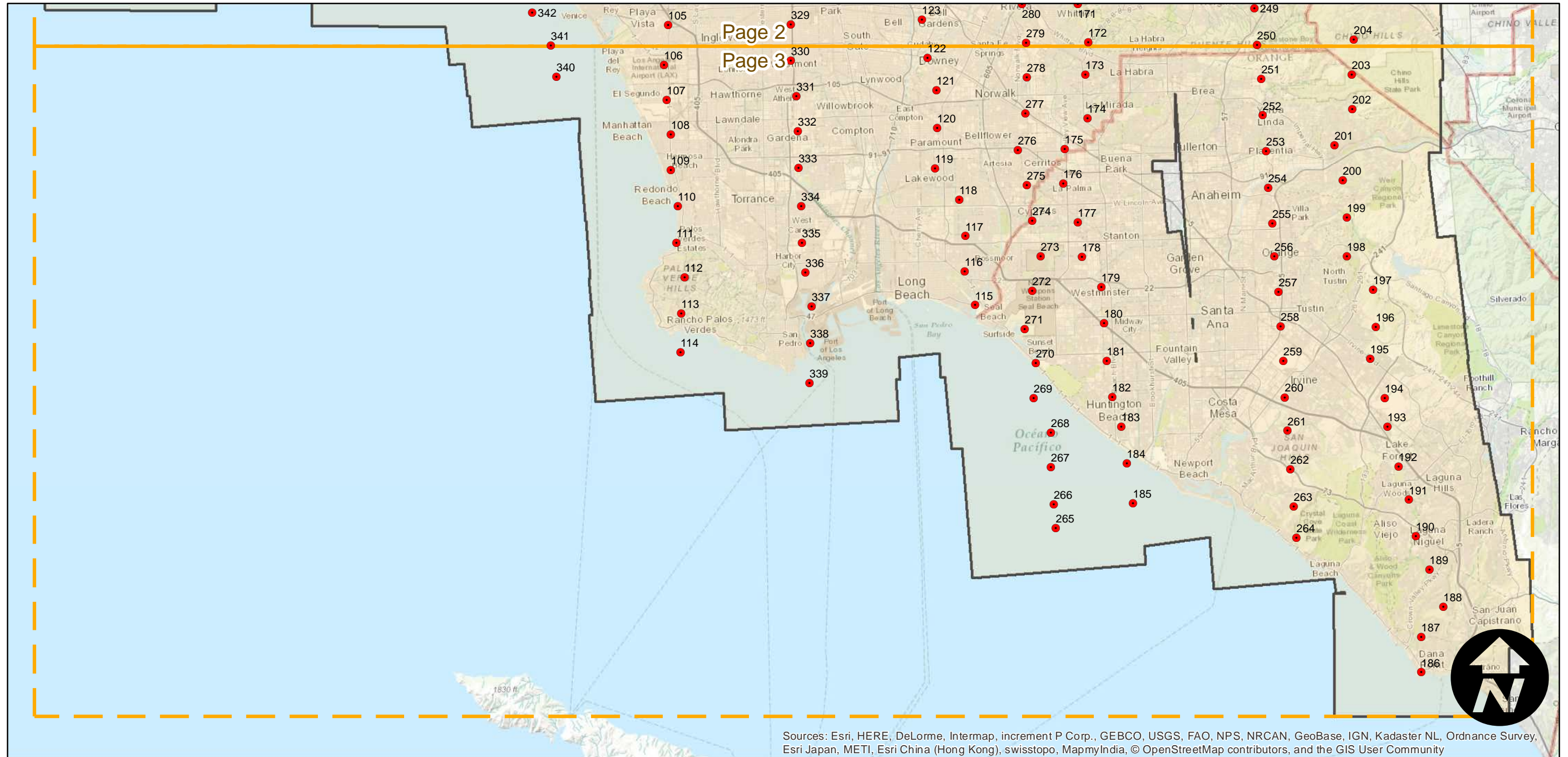
73-036-00997

Counties: Kern, Los Angeles, Orange, Ventura  
Flight date(s): 03-14-1973  
Scale: 1:32,500  
Overlap: 60%

Note: Most of Los Angeles and Orange counties from Antelope Valley to San Juan Capistrano. Coverage extends into eastern Ventura and southern Kern counties. See flight summary report for detailed flight information.



Complete Metadata:  
<http://www.library.ucsb.edu/mil/aerial-photography-tools>



Sources: Esri, HERE, DeLorme, Intermap, increment P Corp., GEBCO, USGS, FAO, NPS, NRCAN, GeoBase, IGN, Kadaster NL, Ordnance Survey, Esri Japan, METI, Esri China (Hong Kong), swisstopo, MapmyIndia, © OpenStreetMap contributors, and the GIS User Community

